

DISTRICT I
P.O. Box 1980, Hobbs, NM 88240

DISTRICT II
P.O. Drawer DD, Artesia, NM 88210

State of New Mexico
Energy, Minerals and Natural Resources Department

Form C-102
Revised February 10, 1994
Instruction on back
Submit to Appropriate District Office
State Lease - 4 Copies
Fee Lease - 3 Copies

DISTRICT III
000 Rio Brazos Rd., Aztec, NM 87410

OIL CONSERVATION DIVISION
P.O. Box 2088
Santa Fe, New Mexico 87504-2088

☐ AMENDED REPORT

WELL LOCATION AND ACREAGE DEDICATION PLAT

API Number 30-015-32836	Pool Code	Pool Name Red Lake; Queen-Grayburg San Andres
Property Code	Property Name EAGLE "35" FEDERAL	Well Number 4
OGRID No. 6137	Operator Name DEVON ENERGY PRODUCTION CO., L.P.	Elevation 3605

Surface Location

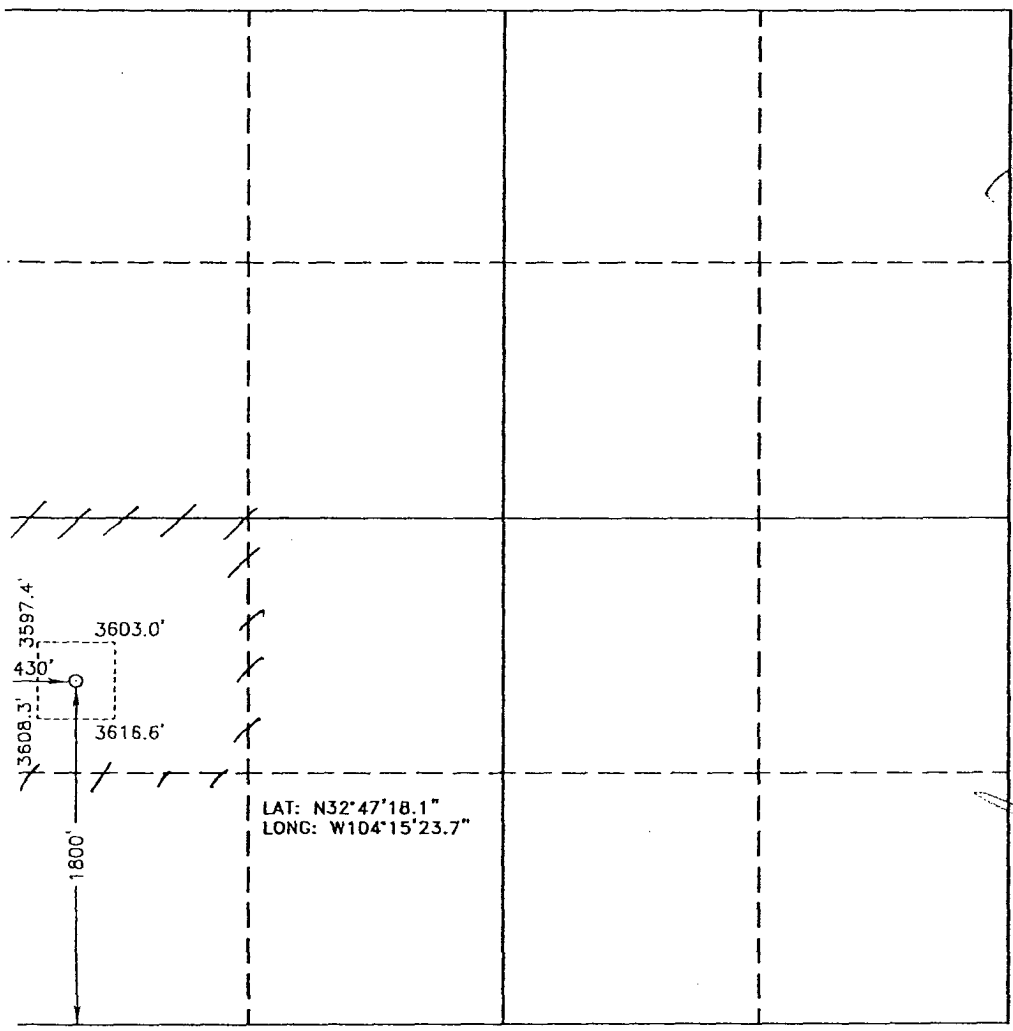
UL or lot No. L	Section 35	Township 17 S	Range 27 E	Lot Idn	Feet from the 1800	North/South line SOUTH	Feet from the 430	East/West line WEST	County EDDY
--------------------	---------------	------------------	---------------	---------	-----------------------	---------------------------	----------------------	------------------------	----------------

Bottom Hole Location If Different From Surface

UL or lot No.	Section	Township	Range	Lot Idn	Feet from the	North/South line	Feet from the	East/West line	County
---------------	---------	----------	-------	---------	---------------	------------------	---------------	----------------	--------

Dedicated Acres 40	Joint or Infill	Consolidation Code	Order No.
-----------------------	-----------------	--------------------	-----------

NO ALLOWABLE WILL BE ASSIGNED TO THIS COMPLETION UNTIL ALL INTERESTS HAVE BEEN CONSOLIDATED
OR A NON-STANDARD UNIT HAS BEEN APPROVED BY THE DIVISION



OPERATOR CERTIFICATION I hereby certify the the information contained herein is true and complete to the best of my knowledge and belief. Signature Norveilla Adams Printed Name Sr. Staff Eng. Tech. Title August 24, 2005 Date
SURVEYOR CERTIFICATION I hereby certify that the well location shown on this plat was plotted from field notes of actual surveys made by me or under my supervision, and that the same is true and correct to the best of my belief. FEBRUARY 13, 2001 Date Surveyed Signature & Seal of Professional Surveyor Certificate No. 1093 Professional Surveyor JLP BASIN SURVEYS