

2 District I
1625 N. French Dr., Hobbs, NM 88240
District II
1301 W. Grand Avenue, Artesia, NM 88210
District III
1000 Rio Brazos Rd., Aztec, NM 87410
District IV
1220 S. St. Francis Dr., Santa Fe, NM 87505

State of New Mexico
Energy, Minerals & Natural Resources Department
OIL CONSERVATION DIVISION
1220 South St. Francis Dr.
Santa Fe, NM 87505

Form C-102
Revised October 15, 2009
Submit one copy to appropriate
District Office
☐ AMENDED REPORT

WELL LOCATION AND ACREAGE DEDICATION PLAT

¹ API Number 30-015-40012	² Pool Code 3715	³ Pool Name Avalon; Delaware
⁴ Property Code 39007	⁵ Property Name SHAQTUS 26 STATE COM	⁶ Well Number 4H
⁷ OGRID No. 6137	⁸ Operator Name DEVON ENERGY PRODUCTION COMPANY, L.P.	⁹ Elevation 3546.4

¹⁰ Surface Location

UL or lot no.	Section	Township	Range	Lot Idn	Feet from the	North/South line	Feet from the	East/West line	County
A	35	21 S	31 E		330	NORTH	660	EAST	EDDY

¹¹ Bottom Hole Location If Different From Surface

UL or lot no.	Section	Township	Range	Lot Idn	Feet from the	North/South line	Feet from the	East/West line	County
A	26	21 S	31 E		307	NORTH	624	EAST	EDDY

¹² Dedicated Acres 160	¹³ Joint or Infill	¹⁴ Consolidation Code	¹⁵ Order No.
--------------------------------------	-------------------------------	----------------------------------	-------------------------

No allowable will be assigned to this completion until all interests have been consolidated or a non-standard unit has been approved by the division.

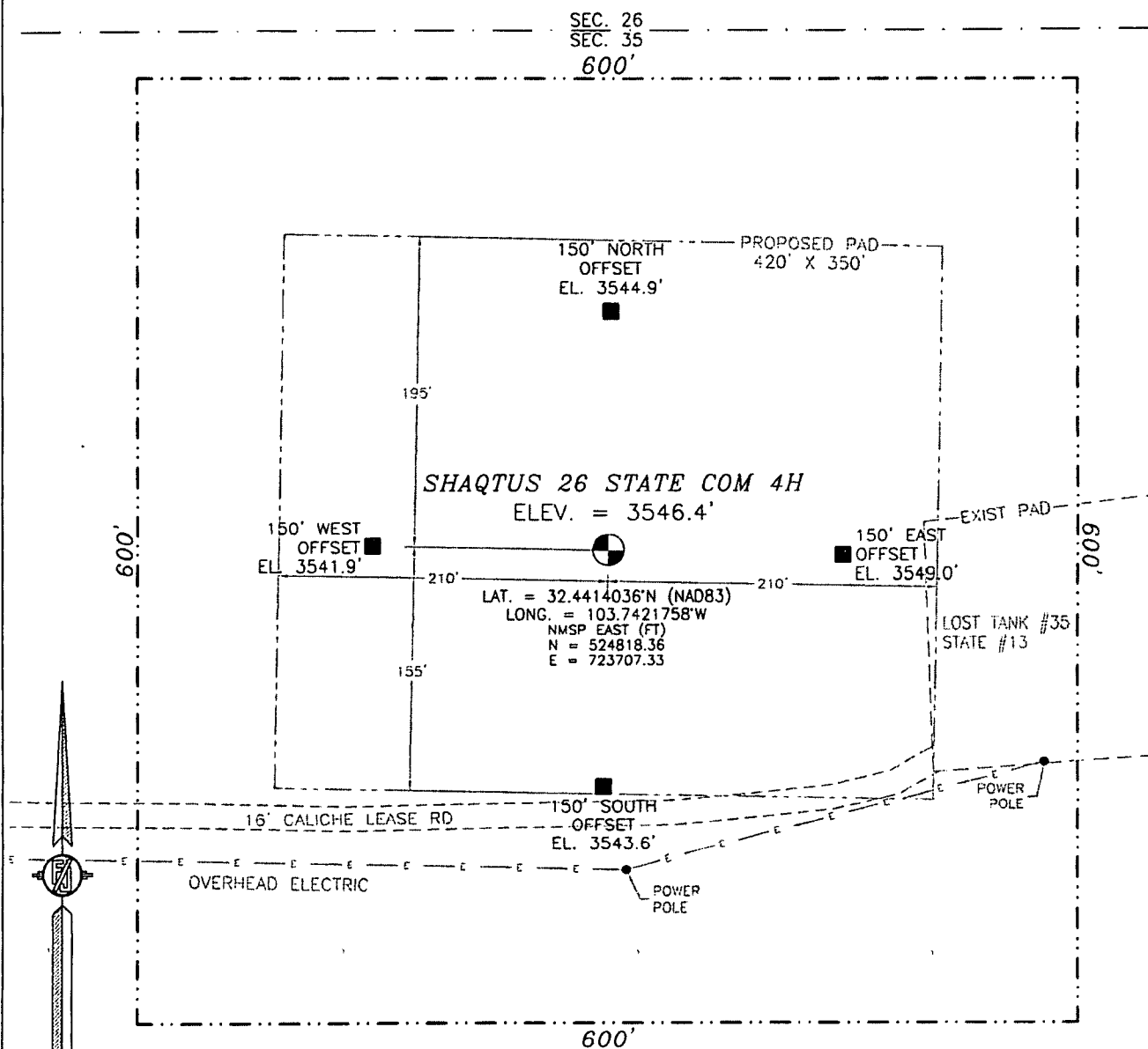
NW CORNER SEC. 26 LAT. = 32.4568370°N LONG. = 103.7571414°W NMSP EAST (FT) N = 530407.84 E = 719080.11	<p>624'</p> <p>307'</p> <p>BOTTOM OF HOLE</p> <p>BOTTOM OF HOLE</p> <p>LAT. = 32.4559161°N LONG. = 103.7421660°W NMSP EAST (FT) N = 530098.05 E = 723687.10</p> <p>PP: 338' FNL & 665' FEL of Sec 35, 21S-31E, Unit A</p> <p>660'</p> <p>330'</p> <p>SURFACE LOCATION</p> <p>SHAQTUS 26 STATE COM 4H</p> <p>ELEV. = 3546.4' LAT. = 32.4414036°N (NAD83) LONG. = 103.7421758°W NMSP EAST (FT) N = 524818.36 E = 723707.33</p> <p>SEC 26</p> <p>SEC 35</p>	NE CORNER SEC. 26 LAT. = 32.4568222°N LONG. = 103.7400165°W NMSP EAST (FT) N = 530431.40 E = 724342.30	<p>¹⁷ OPERATOR CERTIFICATION I hereby certify that the information contained herein is true and complete to the best of my knowledge and belief, and that this organization either owns a working interest or an undivided interest in the land including the proposed bottom hole location or has a right to drill this well in this location pursuant to a contract with an owner of such a mineral or working interest, or to a voluntary pooling agreement or a compulsory pooling order heretofore entered by the division.</p> <p><i>Patti Riechers</i> 11/14/2012 Signature Date</p> <p>Printed Name Patti Riechers, Regulatory Specialist</p>
SECTION CORNER LAT. = 32.4423165°N LONG. = 103.7571513°W NMSP EAST (FT) N = 525125.24 E = 719085.58		SECTION CORNER LAT. = 32.4423097°N LONG. = 103.7400359°W NMSP EAST (FT) N = 525151.69 E = 724365.65	<p>¹⁸ SURVEYOR CERTIFICATION I hereby certify that the well location shown on this plat was plotted from field notes of actual surveys made by me or under my supervision, and that the same is true and correct to the best of my belief.</p> <p>DECEMBER 17, 2011 Date of Survey</p> <p><i>Filmon F. Jaramillo</i> Signature and Seal of Professional Surveyor</p> <p>Certificate Number: FILMON F. JARAMILLO, PLS 12797 SURVEY NO. 746</p>

RECEIVED

NOV 16 2012

NMOCD ARTESIA

SECTION 35, TOWNSHIP 21 SOUTH, RANGE 31 EAST, N.M.P.M.
EDDY COUNTY, STATE OF NEW MEXICO



0 10 50 100 200

SCALE 1" = 100'

DIRECTIONS TO LOCATION

FROM THE INTERSECTION OF U.S. 62/180 (HOBBS HWY.) AND LOUIS
WHITLOCK ROAD TO WIPP SITE AT 0.85 MILES EAST OF MILE MARKER
64 ON U.S. 62/180 GO SOUTH ON LOUIS WHITLOCK ROAD 7.7 MILES
TO A CALICHE LEASE RD ON LEFT (EAST) ABOUT 0.7 MILES SOUTH
OF MILE MARKER 6 GO EAST ON CALICHE RD 1.35 MILES TO CALICHE
ROAD ON LEFT (NORTH) GO ON CALICHE RD NORTH 1.0 MILES TO
CALICHE ROAD ON RIGHT (EAST) GO EAST 0.45 MILES SITE IS ABOUT
150 FT LEFT (NORTH) OF YOU

DEVON ENERGY PRODUCTION COMPANY, L.P.

SHAQTUS 26 STATE COM 4H

LOCATED 330 FT. FROM THE NORTH LINE
AND 660 FT. FROM THE EAST LINE OF
SECTION 35, TOWNSHIP 21 SOUTH,
RANGE 31 EAST, N.M.P.M.
EDDY COUNTY, STATE OF NEW MEXICO

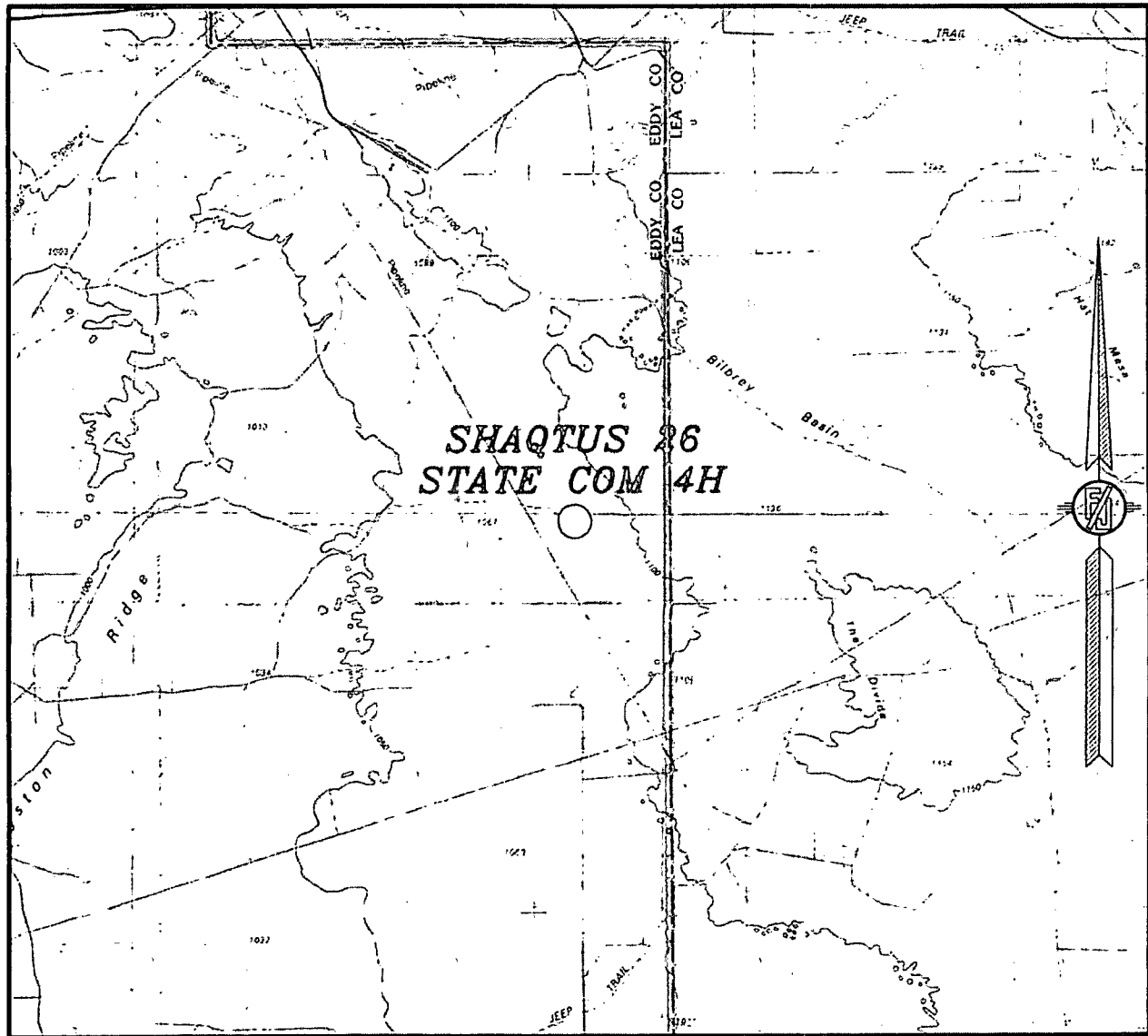
DECEMBER 17, 2011

SURVEY NO. 746

MADRON SURVEYING, INC. 301 SOUTH CAROL (575) 234-3541 CARLSBAD, NEW MEXICO

MADRON SURVEYING, INC. 301 SOUTH CANAL, CARLSBAD, NEW MEXICO
(575) 234-3341

SECTION 35, TOWNSHIP 21 SOUTH, RANGE 31 EAST, N.M.P.M.
EDDY COUNTY, STATE OF NEW MEXICO
VICINITY MAP



NOT TO SCALE

DEVON ENERGY PRODUCTION COMPANY, L.P.

SHAQTUS 26 STATE COM 4H

LOCATED 330 FT. FROM THE NORTH LINE

AND 660 FT. FROM THE EAST LINE OF

SECTION 35, TOWNSHIP 21 SOUTH,

RANGE 31 EAST, N.M.P.M.

EDDY COUNTY, STATE OF NEW MEXICO

DECEMBER 17, 2011

SURVEY NO. 746

MADRON SURVEYING, INC. 301 SOUTH CAPITAL CARLSBAD, NEW MEXICO
(575) 234-3341