

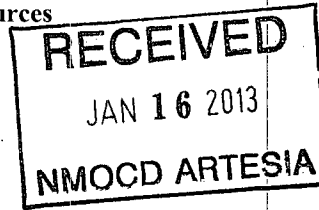
District I
1625 N. French Dr., Hobbs, NM 88240
Phone: (575) 393-6161 Fax: (575) 393-0720
District II
811 S. First St., Artesia, NM 88210
Phone: (575) 748-1283 Fax: (575) 334-6170
District III
1000 Rio Brazos Road, Aztec, NM 87410
Phone: (505) 334-6178 Fax: (505) 334-6170
District IV
1220 S. St. Francis Dr., Santa Fe, NM 87505
Phone: (505) 476-3460 Fax: (505) 476-3462

State of New Mexico
Energy Minerals and Natural Resources

Oil Conservation Division
1220 South St. Francis Dr.
Santa Fe, NM 87505

Form C-101
Revised December 16, 2011

Permit



APPLICATION FOR PERMIT TO DRILL, RE-ENTER, DEEPEN, PLUGBACK, OR ADD A ZONE

1 Operator Name and Address Devon Energy Production Co., L.P. 333 W. Sheridan Oklahoma City, OK 73102-5015		2 OGRID Number 6137	
3 Property Code 302209		4 API Number 30-015-40187	
5 Property Name Burton Flat Deep Unit SWD		6 Well No. 1	

7 Surface Location									
UL - Lot	Section	Township	Range	Lot Idn	Feet from	N/S Line	Feet From	E/W Line	County
N	2	21S	27E		330	South	1550	West	Eddy

8 Pool Information	
Undesignated Delaware SWD, Delaware	96/100

Additional Well Information				
9 Work Type New Well	10 Well Type SWD	11 Cable/Rotary	12 Lease Type State	13 Ground Level Elevation 3230.2'
14 Multiple N	15 Proposed Depth 4800'	16 Formation Delaware	17 Contractor	18 Spud Date
Depth to Ground water		Distance from nearest fresh water well		Distance to nearest surface water

19 Proposed Casing and Cement Program						
Type	Hole Size	Casing Size	Casing Weight/ft	Setting Depth	Sacks of Cement	Estimated TOC
Surface	26"	20"	94#	150	420 CI "C"	0
Int 1	17.5"	13.375"	48#	600	550 CI "C"	0
Int 2	12.25"	9.625"	40#	2850	830 CI "C"	0
Prod liner	8.75"	7"	26#	2550 - 4800	500 CI "H"	2300

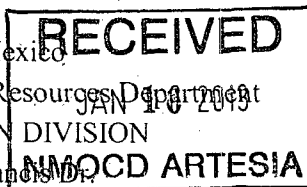
Casing/Cement Program: Additional Comments	
See Attached	

Proposed Blowout Prevention Program			
Type	Working Pressure	Test Pressure	Manufacturer
Annular	3000	3000	
Double Ram	3000	3000	

I hereby certify that the information given above is true and complete to the best of my knowledge and belief. I further certify that the drilling pit will be constructed according to NMOCD guidelines <input type="checkbox"/> , a general permit <input type="checkbox"/> , or an (attached) alternative OCD-approved plan <input type="checkbox"/> .		OIL CONSERVATION DIVISION	
Signature: Patti Riechers		Approved By: T. C. Shepard	
Printed name: Patti Riechers		Title: Geologist	
Title: Regulatory Specialist		Approved Date: 1/18/2013	Expiration Date: 1/18/2015
E-mail Address: patti.riechers@dv.com			
Date: 01/15/2013	Phone: 405-228-4248	Conditions of Approval Attached	

District I
1625 N. French Dr., Hobbs, NM 88240
Phone: (575) 393-6161 Fax: (575) 393-0720
District II
811 S. First St., Artesia, NM 88210
Phone: (575) 748-1253 Fax: (575) 748-9720
District III
1000 Rio Brazos Road, Aztec, NM 87410
Phone: (505) 334-6178 Fax: (505) 334-6170
District IV
1220 S. St. Francis Dr., Santa Fe, NM 87505
Phone: (505) 476-3460 Fax: (505) 476-3462

State of New Mexico
Energy, Minerals & Natural Resources Department
OIL CONSERVATION DIVISION
1220 South St. Francis Dr.
Santa Fe, NM 87505



Form C-102
Revised August 1, 2011
Submit one copy to appropriate
District Office

☐ AMENDED REPORT

WELL LOCATION AND ACREAGE DEDICATION PLAT

¹ API Number 30-015-40987	² Pool Code 96100	³ Undesignated Delaware	⁴ Pool Name SWD, Delaware
⁵ Property Code 302209	⁶ Property Name BURTON FLAT DEEP UNIT SWD		⁷ Well Number 1
⁸ OGRID No. 6137	⁹ Operator Name DEVON ENERGY PRODUCTION COMPANY, L.P.		¹⁰ Elevation 3230.2

¹⁰ Surface Location

UL or lot no.	Section	Township	Range	Lot Idn	Feet from the	North/South line	Feet from the	East/West line	County
N	2	21 S	27 E		330	SOUTH	1550	WEST	EDDY

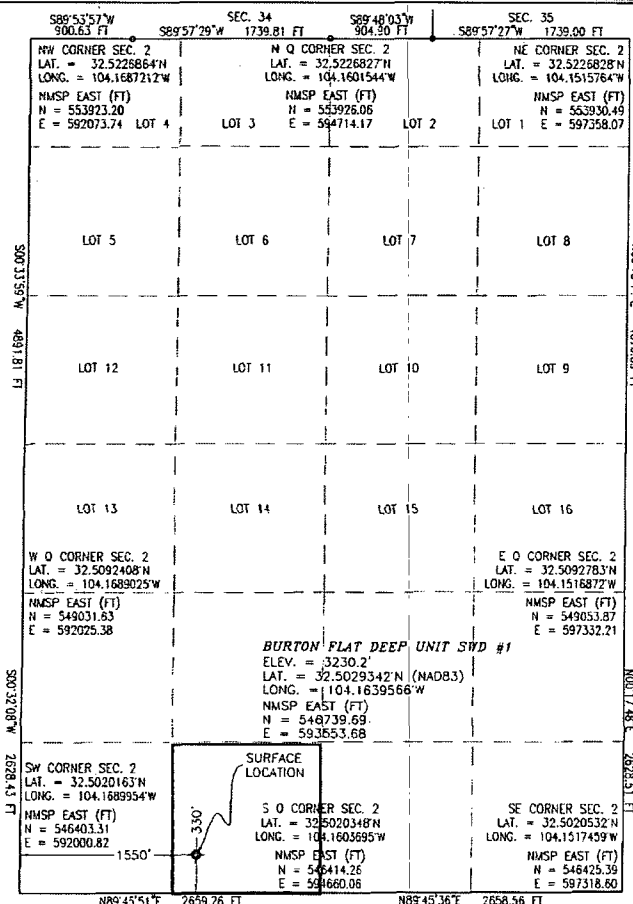
¹¹ Bottom Hole Location If Different From Surface

UL or lot no.	Section	Township	Range	Lot Idn	Feet from the	North/South line	Feet from the	East/West line	County

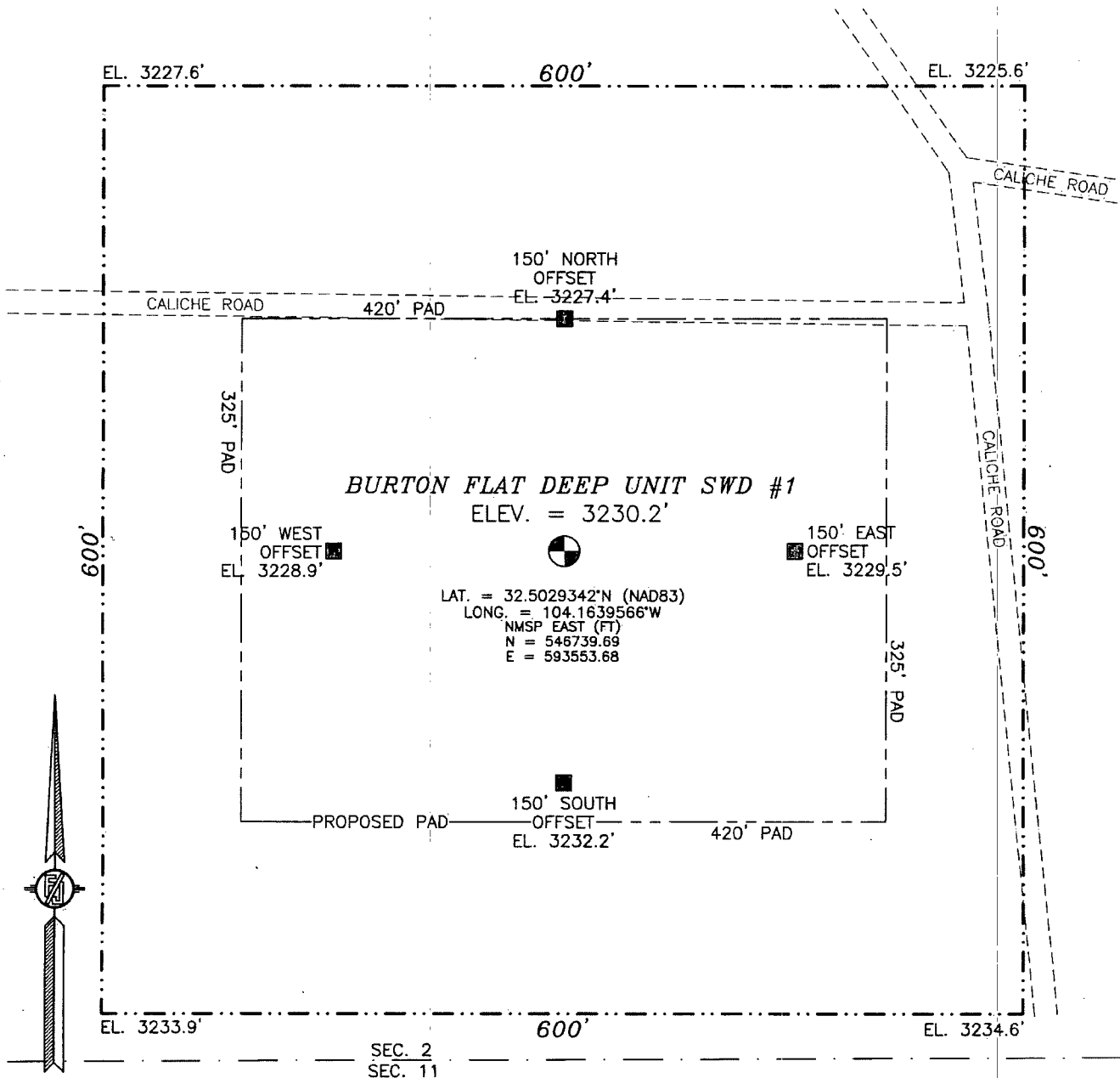
¹² Dedicated Acres 40	¹³ Joint or Infill	¹⁴ Consolidation Code	¹⁵ Order No.
--	-------------------------------	----------------------------------	-------------------------

No allowable will be assigned to this completion until all interests have been consolidated or a non-standard unit has been approved by the division.

<p>¹⁷ OPERATOR CERTIFICATION</p> <p>I hereby certify that the information contained herein is true and complete to the best of my knowledge and belief, and that this organization either owns a working interest or unleased mineral interest in the land including the proposed bottom hole location or has a right to drill this well at this location pursuant to a contract with an owner of such a mineral or working interest, or to a voluntary pooling agreement or a compulsory pooling order heretofore entered by the division.</p> <p><i>Patti Riechers</i> 01/15/2013 Signature Date Patti Riechers, Regulatory Specialist</p> <p>Printed Name patti.riechers@dvn.com</p> <p>E-mail Address</p>		<p>¹⁸ SURVEYOR CERTIFICATION</p> <p>I hereby certify that the well location shown on this plat was plotted from field notes of actual surveys made by me or under my supervision, and that the same is true and correct to the best of my belief.</p> <p>OCTOBER 16 2012 Date of Survey</p> <p><i>[Signature]</i> Signature and Seal of Professional Surveyor Certificate Number SURVEY NO. 1317</p>	
--	--	---	--



SECTION 2, TOWNSHIP 21 SOUTH, RANGE 27 EAST, N.M.P.M.
EDDY COUNTY, STATE OF NEW MEXICO



010 50 100 200

SCALE 1" = 100'

DIRECTIONS TO LOCATION

FROM CR 208 (ILLINOIS CAMP) AND CR 600 (RAINS ROAD) GO EAST ON CR 600 1.4 MILES, ROAD TURNS TO CALICHE, BEND LEFT AND GO EAST-NORTHEAST 2.0 MILES, BEND RIGHT AND GO EAST 0.4 MILES, TURN RIGHT AND GO SOUTHEAST 0.6 MILES, TURN RIGHT AND GO WEST 270 FT AND LOCATION IS ON THE LEFT 150 FT.

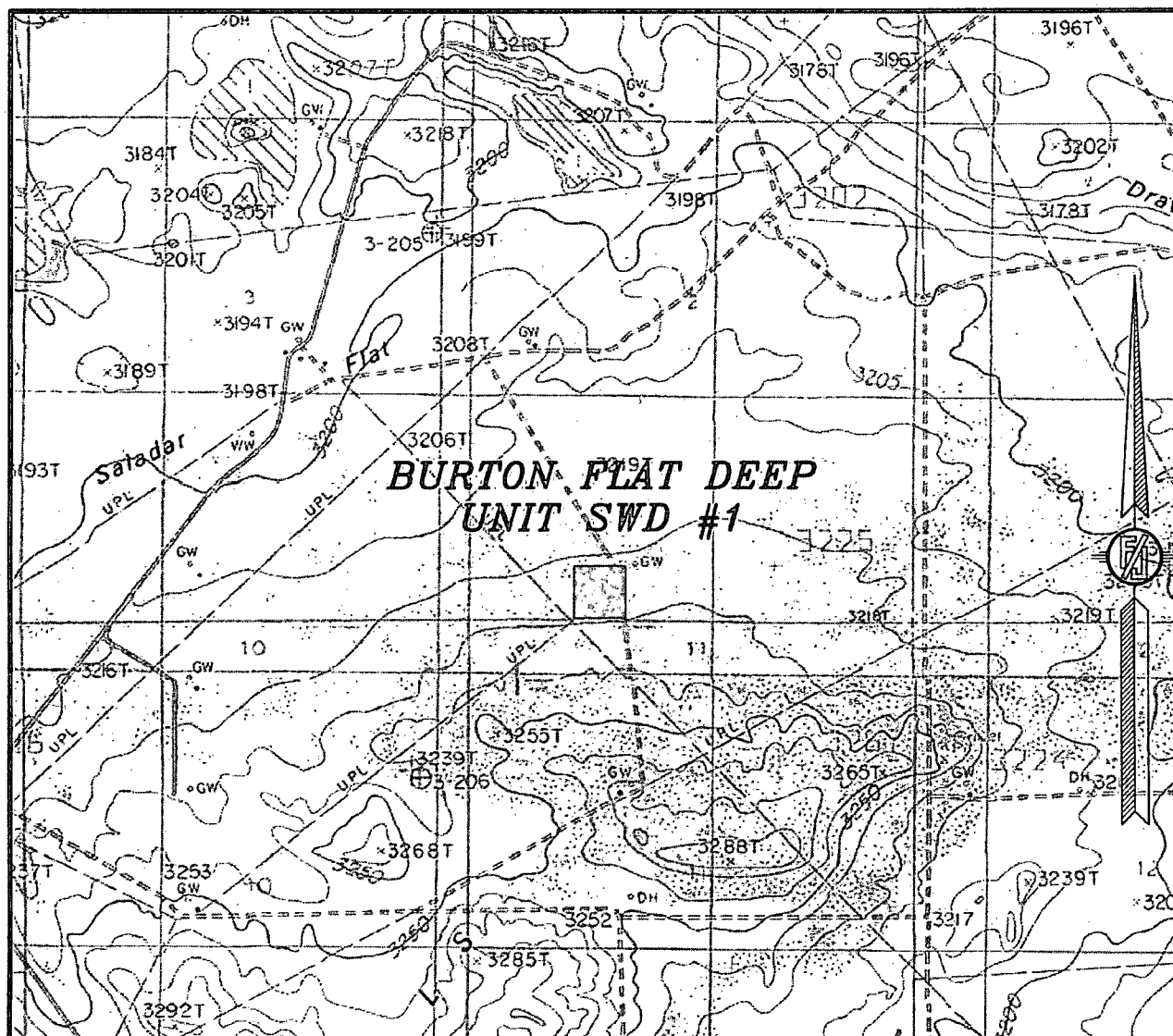
DEVON ENERGY PRODUCTION COMPANY, L.P.
BURTON FLAT DEEP UNIT SWD #1
LOCATED 330 FT. FROM THE SOUTH LINE
AND 1550 FT. FROM THE WEST LINE OF
SECTION 2, TOWNSHIP 21 SOUTH,
RANGE 27 EAST, N.M.P.M.
EDDY COUNTY, STATE OF NEW MEXICO

OCTOBER 16, 2012

SURVEY NO. 1317

MADRON SURVEYING, INC. 301 SOUTH CANAL CARLSBAD, NEW MEXICO
(575) 234-3341

SECTION 2, TOWNSHIP 21 SOUTH, RANGE 27 EAST, N.M.P.M.
EDDY COUNTY, STATE OF NEW MEXICO
LOCATION VERIFICATION MAP



USGS QUAD MAP:
ANGEL DRAW

NOT TO SCALE

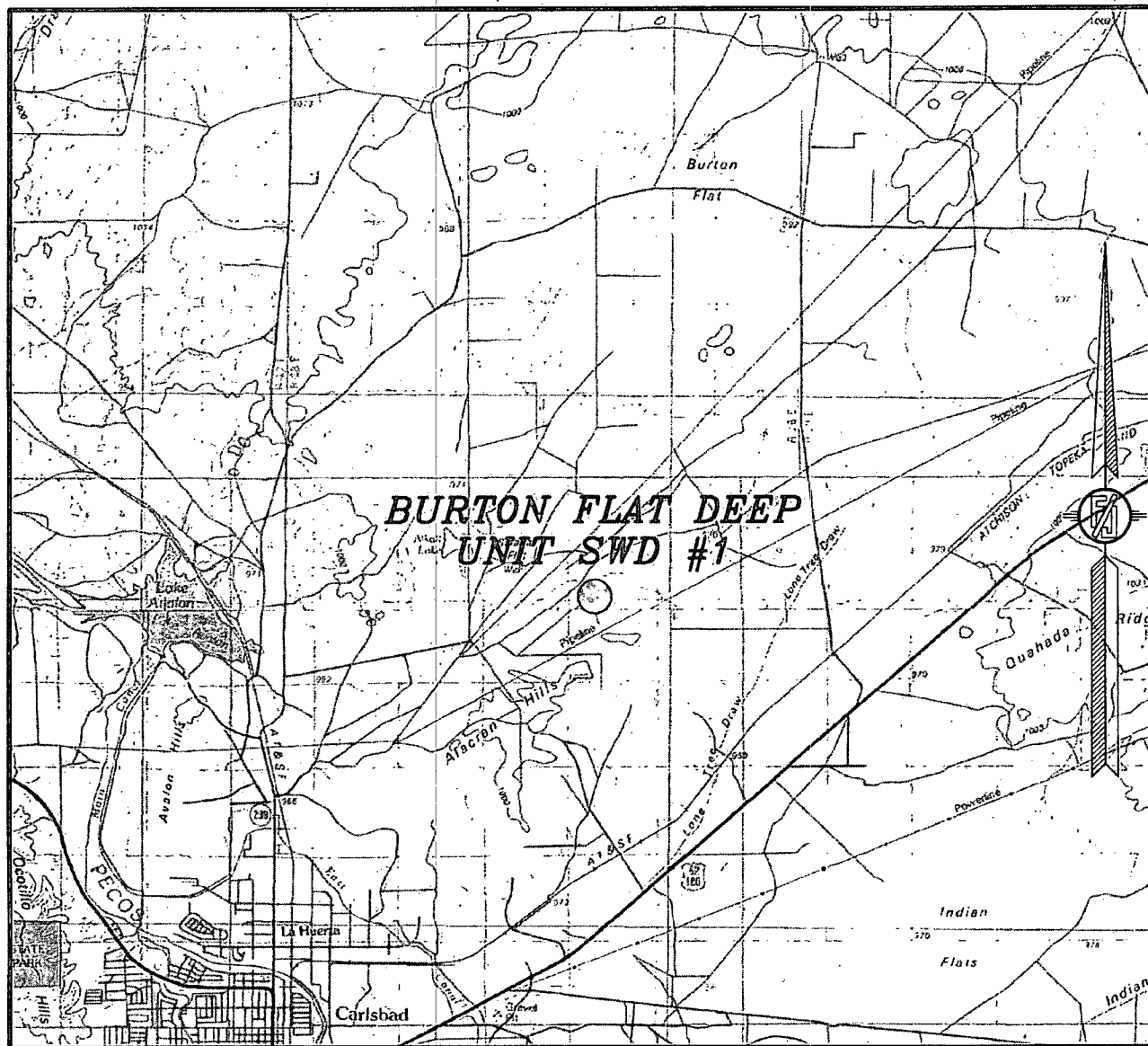
DEVON ENERGY PRODUCTION COMPANY, L.P.
BURTON FLAT DEEP UNIT SWD #1
LOCATED 330 FT. FROM THE SOUTH LINE
AND 1550 FT. FROM THE WEST LINE OF
SECTION 2, TOWNSHIP 21 SOUTH,
RANGE 27 EAST, N.M.P.M.
EDDY COUNTY, STATE OF NEW MEXICO

OCTOBER 16, 2012

SURVEY NO. 1317

MADRON SURVEYING, INC. 301 SOUTH CANAL CARLSBAD, NEW MEXICO
(575) 234-3341

SECTION 2, TOWNSHIP 21 SOUTH, RANGE 27 EAST, N.M.P.M.
EDDY COUNTY, STATE OF NEW MEXICO
VICINITY MAP



NOT TO SCALE

DEVON ENERGY PRODUCTION COMPANY, L.P.
BURTON FLAT DEEP UNIT SWD #1
LOCATED 330 FT. FROM THE SOUTH LINE
AND 1550 FT. FROM THE WEST LINE OF
SECTION 2, TOWNSHIP 21 SOUTH,
RANGE 27 EAST, N.M.P.M.
EDDY COUNTY, STATE OF NEW MEXICO

OCTOBER 16, 2012

SURVEY NO. 1317

MADRON SURVEYING, INC. 301 SOUTH CANAL (575) 234-3341 CARLSBAD, NEW MEXICO

Burton Flat Deep SWD #1-APD DRILLING PLAN
01-02-2013 KKS

Casing Program

<u>Hole Size</u>	<u>Hole Interval</u>	<u>OD Csg</u>	<u>Casing Interval</u>	<u>Weight</u>	<u>Collar</u>	<u>Grade</u>
26"	0 – 150	20"	0 – 150	94#	STC	J-55
17-1/2"	150 – 600	13-3/8"	0 – 600	48#	STC	H-40
12-1/4"	600 – 2,850	9-5/8"	0 – 2,850	40#	LTC	J-55
8-3/4"	2,850 – 5,450	7"	2,550 – 5,450	26#	LTC	P-110

<u>Casing Size</u>	<u>Collapse Design Factor</u>	<u>Burst Design Factor</u>	<u>Tension Design Factor</u>
20" 94# J-55 STC	13.08	18.03	22.13
13-3/8" 48# H-40 STC	2.99	6.72	12.20
9-5/8" 40# J-55 LTC	1.80	2.76	4.73
7" 26# P-110 LTC	1.30	1.71	2.55

The maximum possible collapse load that the intermediate casing will experience will result from evacuated casing with the pore pressure exerting a collapse load at TD. There is no potential for the intermediate casing to be used as the injection string.

Mud Program:

<u>Depth</u>	<u>Mud Wt.</u>	<u>Visc.</u>	<u>Fluid Loss</u>	<u>Type System</u>
0 – 150	8.4 – 9.0	30 – 34	N/C	FW
150 – 600	9.8 – 10.0	28 – 32	N/C	Brine
600 – 2,850	8.4 – 9.0	28 – 30	N/C	FW
2,850 – 5,450	9.8 – 10.0	28 – 32	N/C-12	FW

Pressure Control Equipment:

The BOP system used to drill the **17-1/2"** hole will consist of a **20" 2M Annular preventer**. The BOP system will be tested as per BLM Onshore Oil and Gas Order No. 2 as a **2M system** prior to drilling out the casing shoe.

The BOP system used to drill the **12-1/4"** and **8-3/4"** holes will consist of a **13-5/8" 3M Double Ram and Annular preventer**. The BOP system will be tested as per BLM Onshore Oil and Gas Order No. 2 as a **3M system** prior to drilling out the casing shoe.

The pipe rams will be operated and checked as per Onshore Order No 2. A 2" kill line and 3" choke line will be incorporated into the drilling spool below the ram BOP. In addition to the rams and annular preventer, additional BOP accessories include a kelly cock, floor safety valve, choke lines, and choke manifold rated at **3,000 psi WP**.

20" Surface 150 ft Tail 420 sks Class C Cement +2% Calcium Chloride +3#Kol seal/sk @ 14.8
#/ gal.

Yield 1.35 cf/sk. 150% excess

13-3/8" 1st Intermediate 600 ft. Lead: 300 ft. 240 sacks Class C Cement + 2% bwoc Calcium Chloride
+ 0.125 lbs/sack Poly-E-Flake + 4% bwoc Bentonite + 70.1% Fresh Water, 13.5
ppg

Yield: 1.75 cf/sk

Tail:300 ft 310 sacks Class C Cement + 2% bwoc Calcium Chloride + 0.125
lbs/sack Poly-E-Flake + 63.1% Fresh Water, 14.8 ppg

Yield: 1.35 cf/sk

9-5/8" 2nd Intermediate 2850 ft. Lead:1850 ft 470 sacks (65:35) Class C Cement:Poz (Fly Ash): + 5%
bwow Sodium Chloride + 0.125 lbs/sack Poly-E-Flake + 6% bwoc Bentonite +
70.9% Fresh Water, 12.9 ppg

Yield: 1.85 cf/sk

Tail:1000ft. 360 sacks Class C Cement + 0.125 lbs/sack Poly-E-Flake + 63.5%
Water, 14.8 ppg

Yield: 1.33 cf/sk

7" Production Liner 5450ft

Tail: 500 sacks (50:50) Class H Cement:Poz (Fly Ash) + 1 lb/sk Sodium
Chloride + 0.5% bwoc HALAD-344 + 0.4% bwoc CFR-3 + 0.1% bwoc HR-601
+ 2% bwoc Bentonite + 58.8% Fresh Water, 14.5 ppg

Yield: 1.22 cf/

TOC for All Strings:

Surface:	0
1 st Intermediate:	0
2nd. Intermediate	0
Production:	2,300 ft

ACTUAL CEMENT VOLUMES WILL BE ADJUSTED BASED ON FLUID CALIPER AND CALIPER
LOG DATA.