

RECEIVED
JAN 15 2013
NMCCD ARTESIA

Form 3160-3
(March 2012)

OCD Artesia

FORM APPROVED
OMB No. 1004-0137
Expires October 31, 2014

UNITED STATES
DEPARTMENT OF THE INTERIOR
BUREAU OF LAND MANAGEMENT

APPLICATION FOR PERMIT TO DRILL OR REENTER

5. Lease Serial No.
NM-20965
6. If Indian, Allottee or Tribe Name
709
1/22/2013
7. If Unit or CA Agreement, Name and No.
8. Lease Name and Well No.
RDX FEDERAL 17-17 < 39027 >
9. API Well No.
30-015-40995
10. Field and Pool, or Exploratory
BRUSHY DRAW DELAWARE EAST < 80902 >

1a. Type of work: DRILL REENTER

1b. Type of Well: Oil Well Gas Well Other Single Zone Multiple Zone

2. Name of Operator RKI EXPLORATION & PRODUCTION, LLC.
2246289 >

3a. Address 210 PARK AVENUE, SUITE 900
OKLAHOMA CITY, OK. 73102

3b. Phone No. (include area code)
405-996-5748 (BRENT UMBERHAM)

4. Location of Well (Report location clearly and in accordance with any State requirements.)*
At surface 1650 FNL & 330 FWL
At proposed prod. zone SAME

14. Distance in miles and direction from nearest town or post office*
14 MILES SOUTHEAST OF MALAGA, NM

12. County or Parish
EDDY
13. State
NM

15. Distance from proposed* location to nearest property or lease line, ft. (Also to nearest drig. unit line, if any)
330'

16. No. of acres in lease
520

17. Spacing Unit dedicated to this well
40

18. Distance from proposed location* to nearest well, drilling, completed, applied for, on this lease, ft.
1320'

19. Proposed Depth
7200'

20. BLM/BIA Bond No. on file
NLM-NMB-000460

21. Elevations (Show whether DF, KDB, RT, GL, etc.)
3075'-GL

22. Approximate date work will start*

23. Estimated duration
25-DAYS

24. Attachments

The following, completed in accordance with the requirements of Onshore Oil and Gas Order No.1, must be attached to this form:

- 1. Well plat certified by a registered surveyor.
- 2. A Drilling Plan.
- 3. A Surface Use Plan (if the location is on National Forest System Lands, the SUPO must be filed with the appropriate Forest Service Office).
- 4. Bond to cover the operations unless covered by an existing bond on file (see Item 20 above).
- 5. Operator certification
- 6. Such other site specific information and/or plans as may be required by the BLM.

25. Signature *Barry W. Hunt*

Name (Printed/Typed)
BARRY W. HUNT

Date
10/11/12

Title
PERMIT AGENT FOR RKI EXPLORATION & PRODUCTION, LLC.

Approved by (Signature) */s/ James A. Amos*

Name (Printed/Typed)

Date
JAN 11 2013

Title
FIELD MANAGER

Office
CARLSBAD FIELD OFFICE

Application approval does not warrant or certify that the applicant holds legal or equitable title to those rights in the subject lease which would entitle the applicant to conduct operations thereon.
Conditions of approval, if any, are attached.
APPROVAL FOR TWO YEARS

Title 18 U.S.C. Section 1001 and Title 43 U.S.C. Section 1212, make it a crime for any person knowingly and willfully to make to any department or agency of the United States any false, fictitious or fraudulent statements or representations as to any matter within its jurisdiction.

(Continued on page 2)

*(Instructions on page 2)

Carlsbad Controlled Water Basin

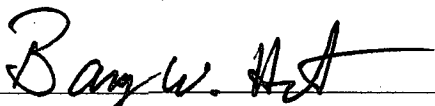
Approval Subject to General Requirements & Special Stipulations Attached

SEE ATTACHED FOR
CONDITIONS OF APPROVAL

CERTIFICATION

I hereby certify that I, or persons under my direct supervision, have inspected the proposed drill site and access road proposed herein; that I am familiar with the conditions that presently exist; that I have full knowledge of State and Federal laws applicable to this operation; that the statements made in this APD package are, to the best of my knowledge, true and correct, and that the work associated with the operations proposed herein will be performed in conformity with this APD package and the terms and conditions under which it is approved. I also certify that I, or RKI Exploration and Production, LLC am responsible for the operations conducted under this application. These statements are subject to the provisions of 18 U. S. C. 1001 for the filing of false statements. Executed this 10th day of October 2012.

Signed: _____



Printed Name: Barry Hunt

Position: Agent for RKI Exploration & Production, LLC.

Address: 1403 Springs Farm Place, Carlsbad, NM 88220

Telephone: (575) 361-4078

E-mail: specialtpermitting@gmail.com

DRILLING PLAN

Well RDX Federal 17-17
 Location 1,650 FNL 330 FWL
 Section 17-26S-30E
 County Eddy
 State New Mexico

- 1) The elevation of the unprepared ground is 3,075 feet above sea level.
- 2) The geologic name of the surface formation is Quaternary - Alluvium.
- 3) A rotary rig will be utilized to drill the well to 7,200 feet and run casing. This equipment will then be rigged down and the well will be completed with a workover rig.
- 4) Proposed depth is 7,200 feet.
- 5) Estimated tops:

Alluvium	*		
Ruslter	937		
Salado	1,286		
Castile	1,766		
Lamar Lime	3,307		
Base of Lime	3,507		
Delaware Top	3,540		
Bell Canyon Sand	3,540	Oil	1,533 psi
Cherry Canyon Sand	4,606	Oil	1,994 psi
Brushy Canyon Sand	5,664	Oil	2,453 psi
TD	7,200		140 degree F

* Fresh water anticipated at about 200 ft.

- 6) Pressure control equipment: *See COA*

The blowout preventer equipment (BOP) shown in Exhibit #1 will consist of a double ram type (3,000 psi WP) preventer, a bag-type annular preventer (3,000 psi WP), and rotating head. Both units will be hydraulically operated and the ram type preventer will be equipped with blind rams on top and pipe rams (sized to accommodate the drill pipe size being utilized) on bottom. A 13 3/8" SOW x 13 5/8" 3M casing head will be installed on the 13 3/8" casing and utilized until total depth is reached. All BOP and associated equipment will be tested to 3,000 psi and the annular will be tested to 1,500 psi after setting the 13 3/8" string. The 13 3/8" and 9 5/8" casing will be tested to .22 psi per ft of casing string length or 1,500 psi whichever is greater, but not to exceed 70% of the minimum yield. The 9 5/8" casing will be hung in the casing head and the stack will not be nipped down at this point. The stack will not be isolated and tested after running the 9 5/8" casing, but will be tested along with the 9 5/8" casing. Pipe rams will be operated and checked each 24 hour period and each time the drill string is out of the hole. These function test will be documented on the daily driller's log. A drilling spool or blowout preventer with 2 side outlets (choke side shall be 3" minimum diameter; kill side shall be at least 2" diameter).
 2 kill line valves, one of which will be a check valve.
 2 chokes on the manifold along with a pressure gauge.
 Upper kelly cock valve with handle available.
 Safety valve and subs to fit all drill string connections in use.
 All BOP equipment connections subjected to pressure will be flanged, welded, or clamped.
 Fill up line above the upper most preventer.

7) Casing program:

Hole Size	Top	Bottom	OD Csg	Wt/Grade	Connection	Collapse Design Factor	Burst Design Factor	Tension Design Factor
17 1/2"	0	950	13 3/8"	54.5#/J-55	ST&C	2.75	5.58	9.93
12 1/2"	0	3,450	9 5/8"	40#/J-55	LT&C	1.35	5.38	3.77
7 7/8"	0	7,200	5 1/2"	17#/N-80	LT&C	2.01	1.55	2.84

All new casing

8) Cement program:

Surface 17 1/2" hole
 Pipe OD 13 3/8"
 Setting Depth 950 ft
 Annular Volume 0.69462 cf/ft
 Excess 1 100 %

Lead 601 sx 1.75 cf/sk 13.5 ppg
 Tail 200 sx 1.34 cf/sk 14.8 ppg

Lead: "C" + 4% PF20 (gel) + 2% PF1 (CC) + .125 pps PF29 (CelloFlake) + .2% PF46 (antifoam)

Tail: "C" + 1% PF1 (CC)

Top of cement: Surface

Intermediate 12 1/2" hole
 Pipe OD 9 5/8"
 Setting Depth 3,450 ft
 Annular Volume 0.31318 cf/ft 0.3627 cf/ft
 Excess 1 100 %
 Total Annular Volume 1128 cf
 With Excess 2255 cf

Lead 961 sx 2.07 cf/sk 12.6 ppg
 Tail 200 sx 1.33 cf/sk 14.8 ppg

Lead: 35/65 Poz "C" + 5% PF44 (salt) + 6% PF20 (gel) + 3 pps PF42 (KoalSeal) + .125 pps PF29 (CelloFlake) + .2% PF46 (antifoam) + 1% PF1 (CC)

Tail: "C" + .2% PF13 (retarder)

Top of cement: Surface

Production 7 7/8" hole
 Pipe OD 5 1/2"
 Setting Depth 7,200 ft
 Annular Volume 0.1733 cf/ft 0.26074 cf/ft 300 ft
 Excess 0.35 35 %
 Total Annular Volume 728 cf
 With Excess 983 cf
 DV Tool Depth 5,000 ft

Stage 1

Lead: 350 sx 1.47 cf/sk 13.0 ppg

Lead: PVL + 2% PF174 (expanding agent) + .3% PF167 (Uniflac) + .1% PF65 (dispersant) + .2% PF13 (retarder) + .25 pps PF46 (antifoam)

Top of cement: DV tool

Stage 2

Lead: 157 sx 2.04 cf/sk 12.6 ppg

Tail: 100 sx 1.47 cf/sk 13.0 ppg

Lead: 35/65 Poz "C" + 5% PF44 (salt) + 6% PF20 (gel) + .125 pps PF29 (CelloFlake) + .2% PF13 (retarder) + .25 pps PF46 (antifoam)

Tail: PVL + 1.3% PF44 (salt) + 5% PF174 (expander) + .5% FP606 (gel suppressing agent) + .25 pps PF46 (antifoam) + .2% PF13 (retarder)

Top of cement: 3,150 ft

See COA

9) Mud program:

Top	Bottom	Mud Wt.	Vis	PV	YP	Fluid Loss	Type System
0	950	8.5 to 8.9	32 to 36	6 - 12	2 - 8	NC	Fresh Water
950	3,450	9.8 to 10.0	28 to 30	1 - 6	1 - 6	NC	Brine
3,450	7,200	8.9 to 9.1	28 to 36	1 - 6	1 - 6	NC	Fresh Water

10) Logging, coring, and testing program: *See COA*

No drillstem test are planned

Total depth to intermediate: CNL, Caliper, GR, DLL,

Intermediate to surface: CNL, GR

No coring is planned

11) Potential hazards:

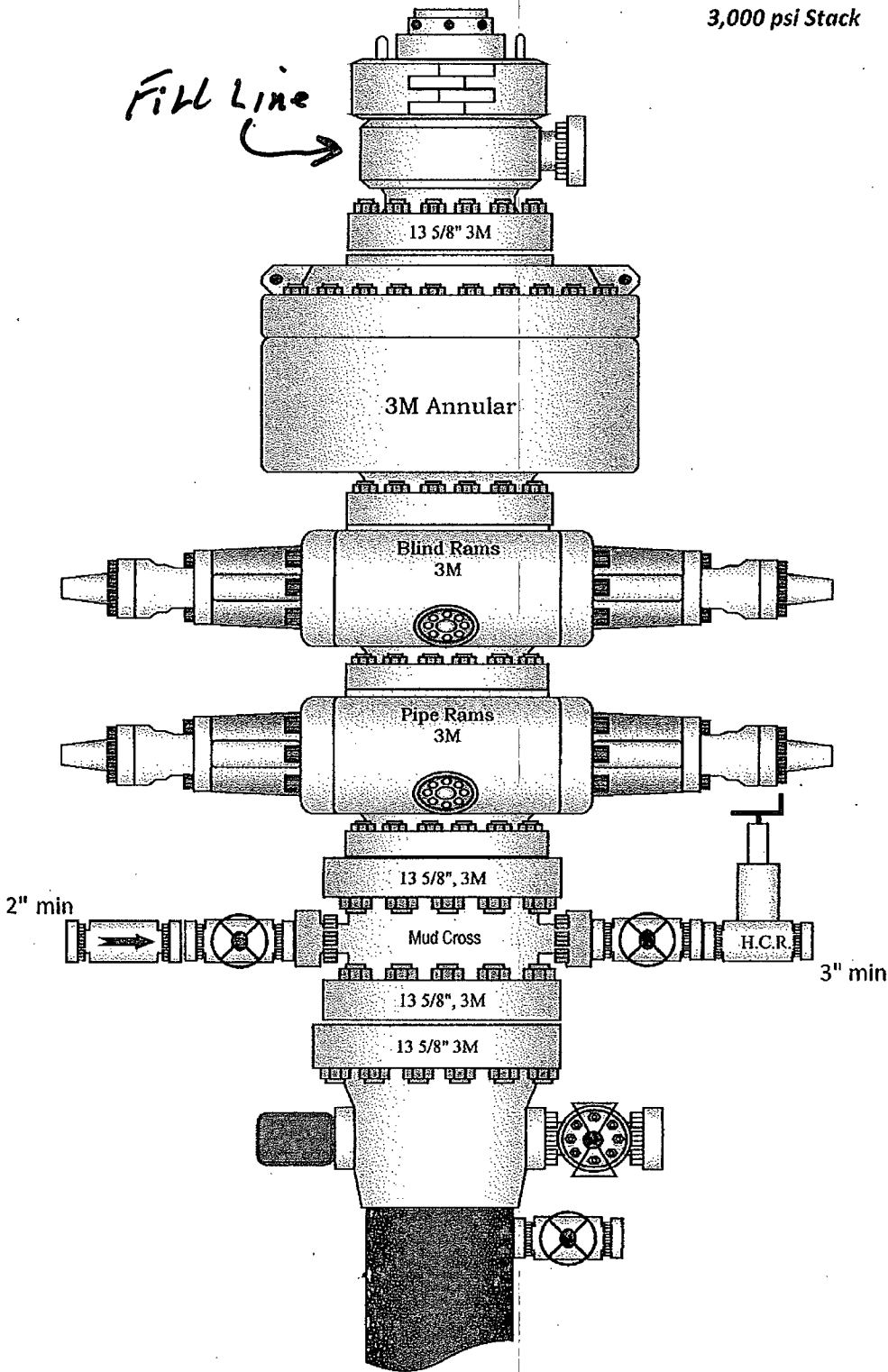
-No abnormal pressure or temperature is expected. -No H2S is known to exist in the area.

Lost circulation is not anticipated, but lost circulation equipment will be on location and readily available if needed.

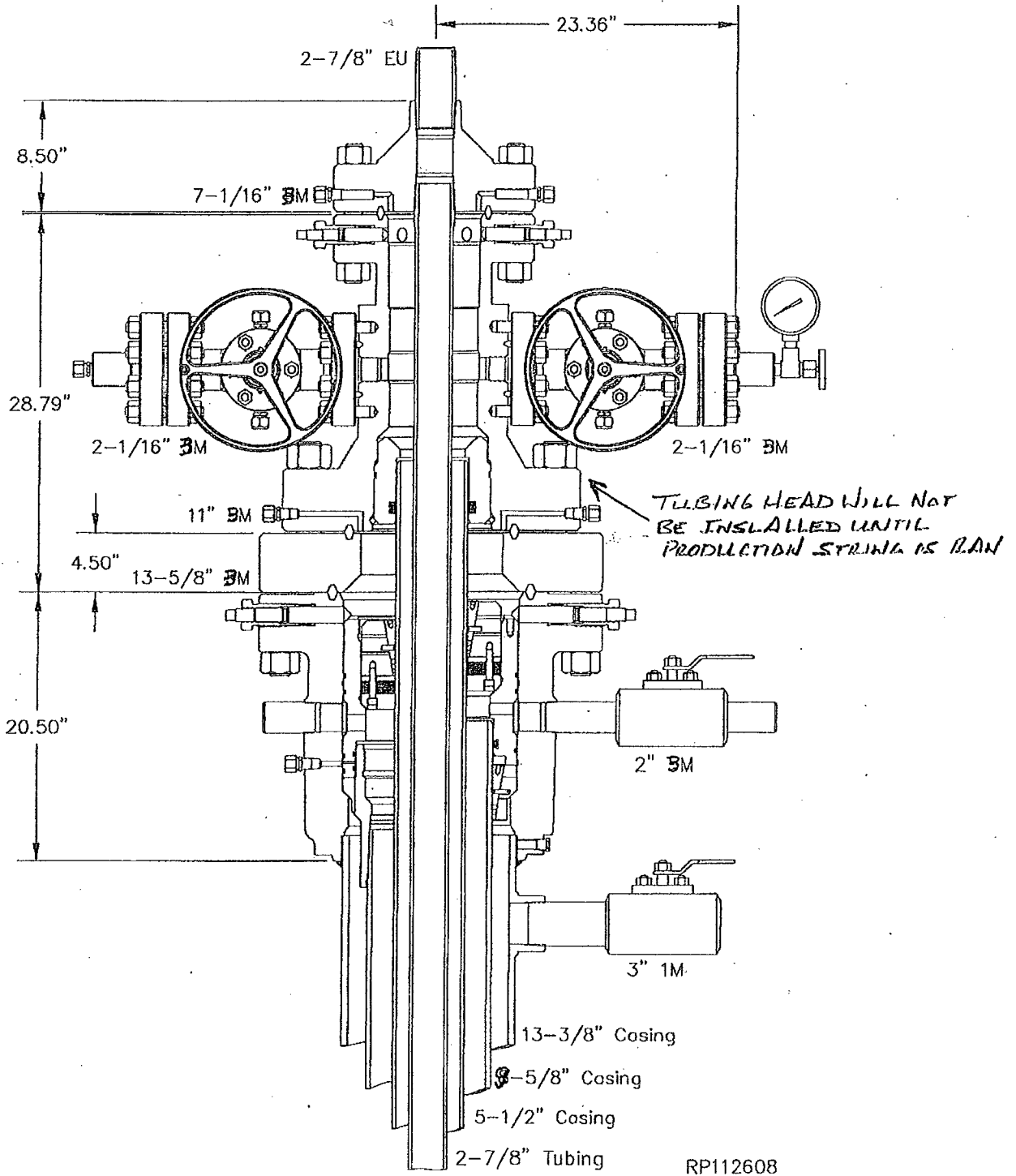
12) Anticipated Start Date Dec '12
Duration 25 days

3,000 psi Stack

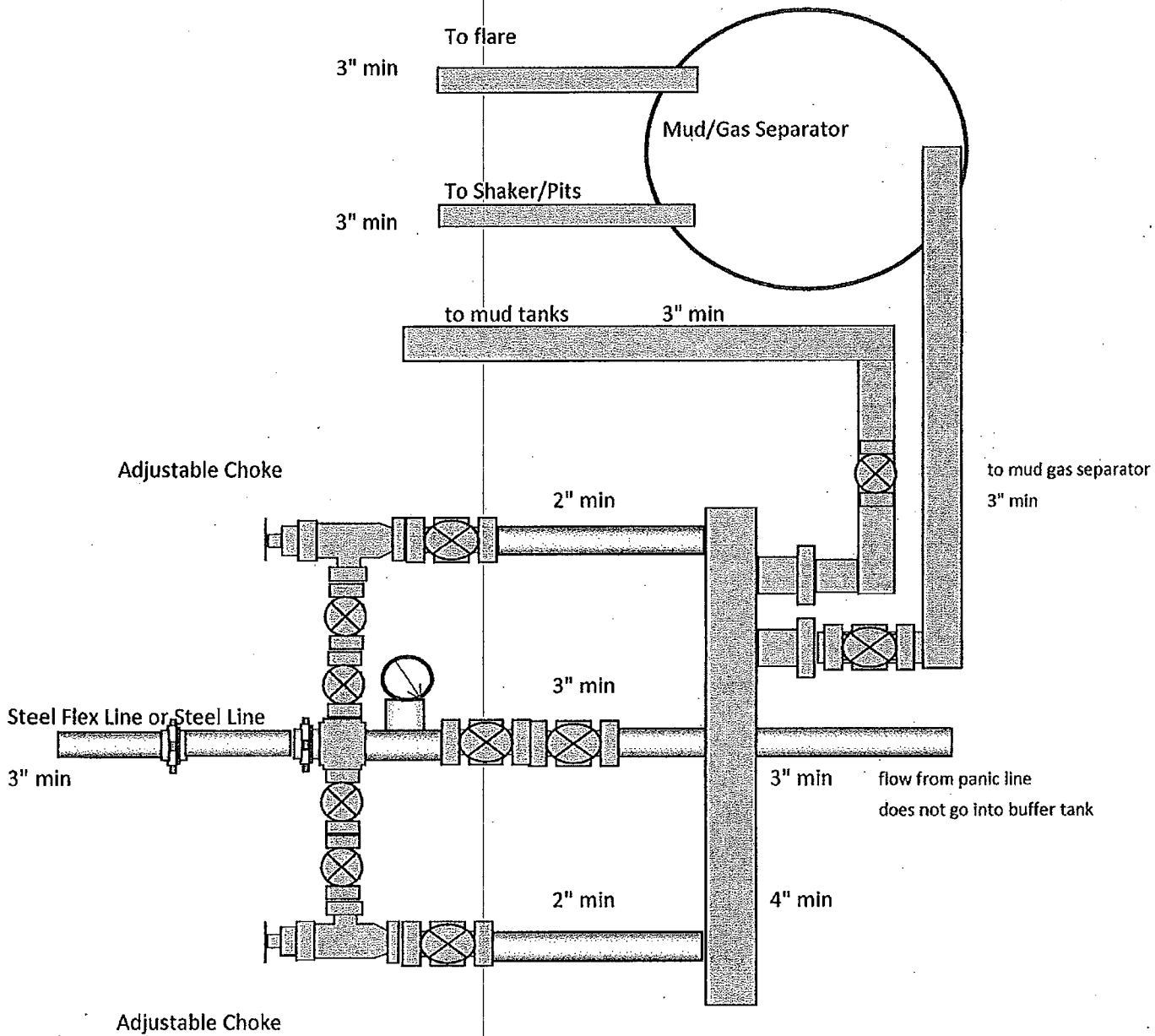
Fill Line
↪



System Drawing



3,000 psi Manifold



RKI Exploration and Production
3817 N. W. Expressway, Suite 950
Oklahoma City, OK. 73112

Closed Loop System

Design Plan

Equipment List

- 2 -- 414 Swaco Centrifuges
- 2 -- 4 screen Mongoose shale shakers
- 2 -- 250 bbl. tanks to hold fluid
- 2 -- CRI Bins with track system
- 2 -- 500 bbl. frac tanks for fresh water
- 2 -- 500 bbl. frac tanks for brine water

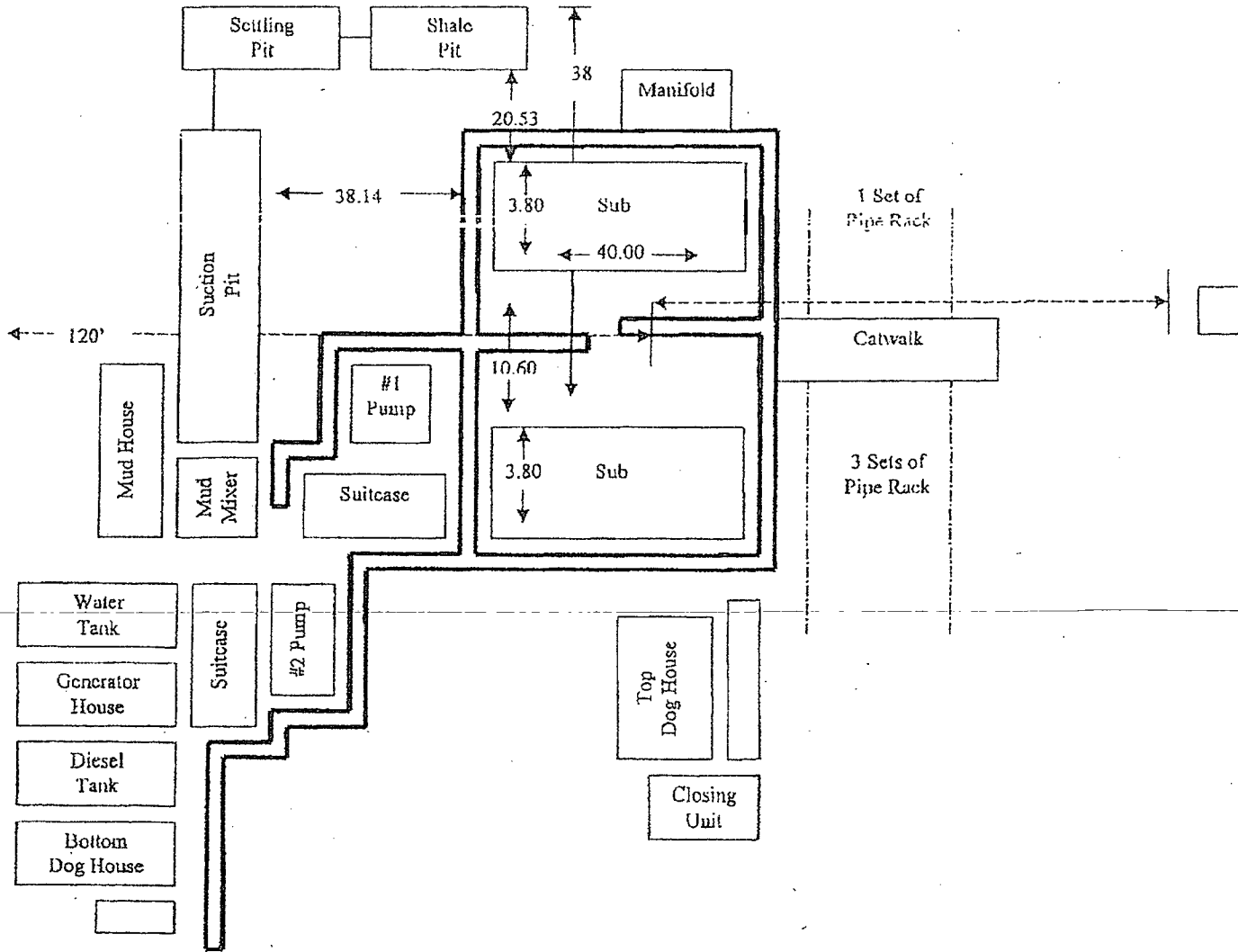
Operation and Maintenance

- Closed Loop equipment will be inspected daily by each tour and any necessary maintenance performed
- Any leak in system will be repaired and/or contained immediately
- OCD notified within 48 hours
- Remediation process started

Closure Plan

During drilling operations, all liquids, drilling fluids and cuttings will be hauled off via CRI (Controlled Recovery Incorporated). Permit #: R-9166.

Plat for Closed Loop System



PECOS DISTRICT CONDITIONS OF APPROVAL

OPERATOR'S NAME:	RKI EXPLORATION
LEASE NO.:	NM20965
WELL NAME & NO.:	17-RDX FEDERAL 17
SURFACE HOLE FOOTAGE:	1650'/N. & 330'/W.
LOCATION:	Section 17, T. 26 S., R. 30 E., NMPM
COUNTY:	Eddy County, New Mexico

TABLE OF CONTENTS

Standard Conditions of Approval (COA) apply to this APD. If any deviations to these standards exist or special COAs are required, the section with the deviation or requirement will be checked below.

- General Provisions**
- Permit Expiration**
- Archaeology, Paleontology, and Historical Sites**
- Noxious Weeds**
- Special Requirements**
 - Phantom Bank Heronries
- Construction**
 - Notification
 - Topsoil
 - Closed Loop System
 - Federal Mineral Material Pits
 - Well Pads
 - Roads
- Road Section Diagram**
- Drilling**
 - Logging Requirements
 - Medium Cave/Karst
 - Waste Material and Fluids
- Production (Post Drilling)**
 - Well Structures & Facilities
 - Pipelines
 - Electric Lines
- Interim Reclamation**
- Final Abandonment & Reclamation**