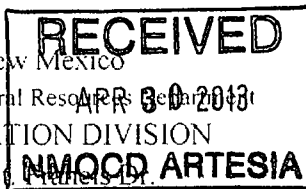


District I
1625 N. French Dr., Hobbs, NM 88240
District II
1301 W. Grand Avenue, Artesia, NM 88210
District III
1000 Rio Brazos Rd., Aztec, NM 87410
District IV
1220 S. St. Francis Dr., Santa Fe, NM 87505

State of New Mexico
Energy, Minerals & Natural Resources Department
OIL CONSERVATION DIVISION
1220 South St. Francis Dr.
Santa Fe, NM 87505



Form C-102
Revised October 15, 2009
Submit one copy to appropriate
District Office

☐ AMENDED REPORT

WELL LOCATION AND ACREAGE DEDICATION PLAT

¹ API Number 30-015-40222	² Pool Code 97650	³ Pool Name WC Williams Sink; Bone Springs
⁴ Property Code 39137	⁵ Property Name SPICA "25" FEDERAL	
⁷ OGRID No. 6137	⁶ Well Number 2H	⁸ Elevation 3490.4
⁹ Operator Name DEVON ENERGY PRODUCTION COMPANY, L.P.		

¹⁰ Surface Location

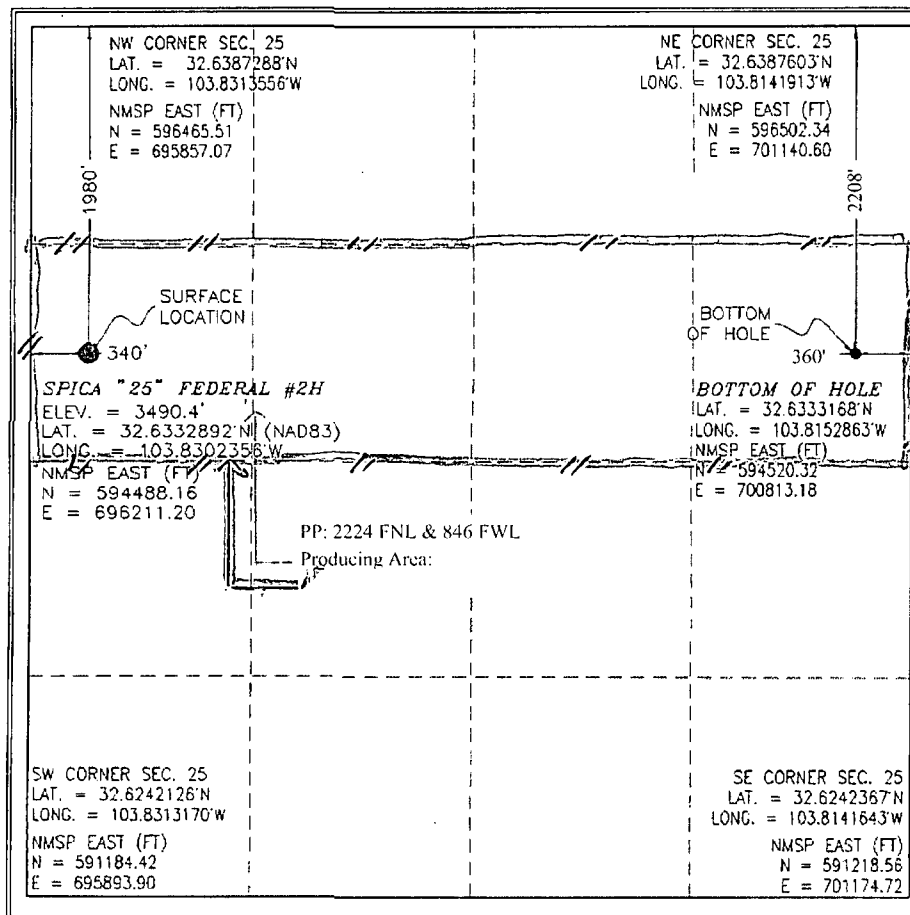
UL or lot no.	Section	Township	Range	Lot Idn	Feet from the	North/South line	Feet from the	East/West line	County
E	25	19 S	31 E		1980	NORTH	340	WEST	EDDY

¹¹ Bottom Hole Location If Different From Surface

UL or lot no.	Section	Township	Range	Lot Idn	Feet from the	North/South line	Feet from the	East/West line	County
H	25	19 S	31 E		2208	NORTH	360	EAST	EDDY

¹² Dedicated Acres	¹³ Joint or Infill	¹⁴ Consolidation Code	¹⁵ Order No.
160			

No allowable will be assigned to this completion until all interests have been consolidated or a non-standard unit has been approved by the division.



¹⁷ OPERATOR CERTIFICATION

I hereby certify that the information contained herein is true and complete to the best of my knowledge and belief, and that this organization either owns a working interest or undivided mineral interest in the land including the proposed bottom hole location or has a right to drill this well at this location pursuant to a contract with an owner of such a mineral or working interest, or in a voluntary pooling agreement or a compulsory pooling order heretofore entered by the division.

Signature: *Judith A. Barnett* Date: 2/8/10

Printed Name
Judith A. Barnett, Regulatory Specialist

¹⁸ SURVEYOR CERTIFICATION

I hereby certify that the well location shown on this plat was plotted from field notes of actual surveys made by me or under my supervision, and that the same is true and correct to the best of my belief.

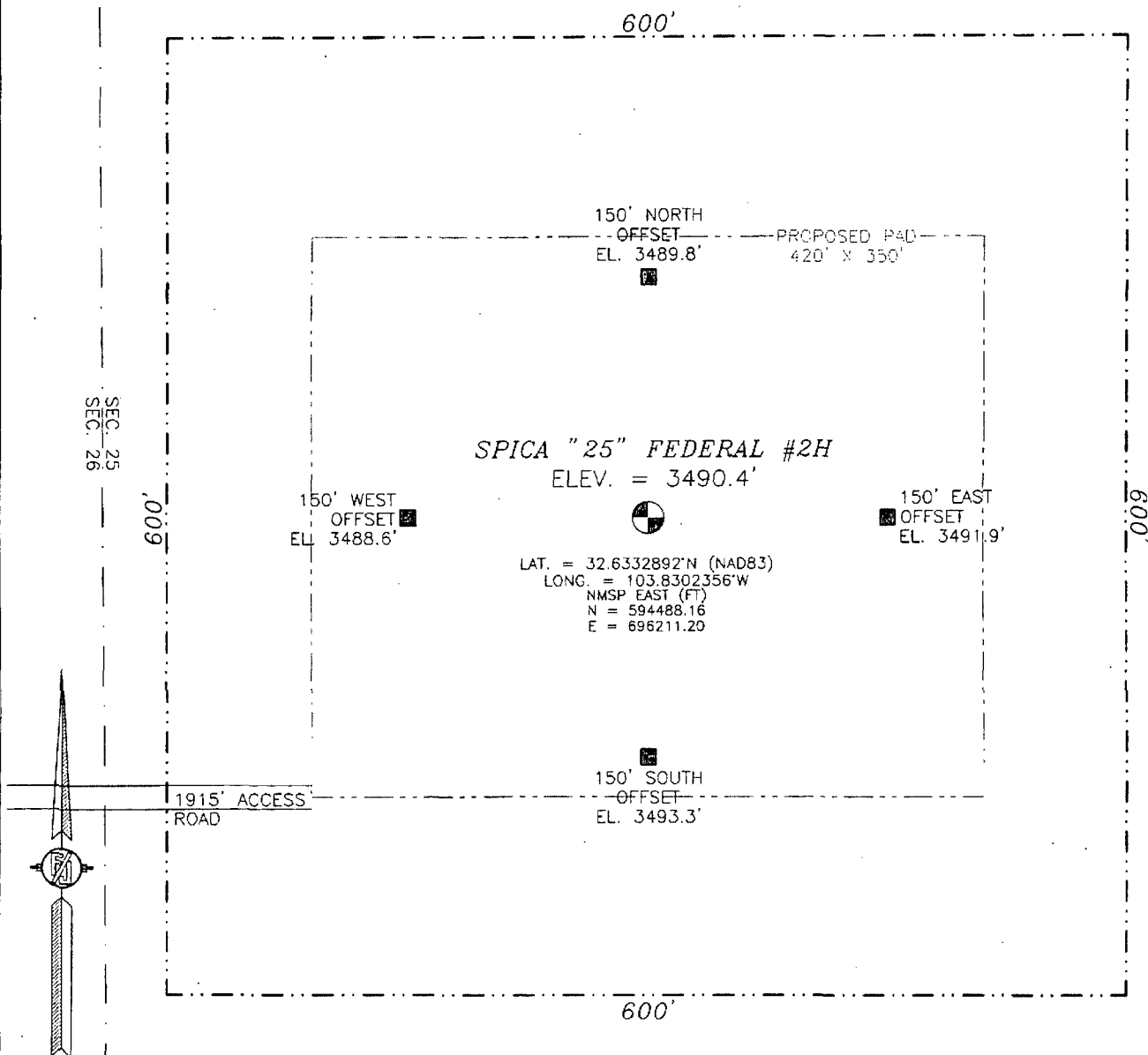
OCTOBER 17, 2010

Date of Survey:

Signature and Seal of Professional Surveyor:
Filimon F. Jaramillo

Certificate Number: FILIMON F. JARAMILLO, PLS 12797
SURVEY NO 602

SECTION 25, TOWNSHIP 19 SOUTH, RANGE 31 EAST, N.M.P.M.
EDDY COUNTY, STATE OF NEW MEXICO



010 50 100 200

SCALE 1" = 100'

DIRECTIONS TO LOCATION

FROM PAVED CR. 248 (LUSK PLANT) AND PAVED CR. #222 (SHUGART) GO EAST ON CR. 248 1.7 MILES, TURN RIGHT ON CALICHE ROAD AND GO SOUTH 0.45 MILES, TURN LEFT AND GO EAST 0.45 MILES, TURN RIGHT AND GO SOUTH 0.5 MILES, TURN RIGHT AND GO WEST 0.5 MILES, TURN LEFT ON OLD CALICHE ROAD AND GO SOUTH 0.2 MILES, TO A PROPOSED ROAD SURVEY FOLLOW FLAGS SOUTH 291' THE SOUTHEAST 741' THE SOUTH 626' THEN EAST 257' TO THE SOUTHWEST CORNER OF THE PROPOSED PAD FOR THIS LOCATION.

DEVON ENERGY PRODUCTION COMPANY, L.P.

SPICA "25" FEDERAL #2H

LOCATED 1980 FT. FROM THE NORTH LINE
AND 340 FT. FROM THE WEST LINE OF
SECTION 25, TOWNSHIP 19 SOUTH,
RANGE 31 EAST, N.M.P.M.

EDDY COUNTY, STATE OF NEW MEXICO

OCTOBER 17, 2011

SURVEY NO. 602

MADRON SURVEYING, INC. 351 SOUTH CANAL CARLSBAD, NEW MEXICO

(375) 234-3141