

DISTRICT I  
1625 N. FRENCH DR., HOBBBS, NM 88240

DISTRICT II  
1301 W. GRAND AVENUE, ARTESIA, NM 88210

DISTRICT III  
1000 RIO BRAZOS RD., AZTEC, NM 87410

DISTRICT IV  
12310 S. ST. FRANCIS DR., SANTA FE, NM 87505

State of New Mexico  
Energy, Minerals and Natural Resources Department

OIL CONSERVATION DIVISION

12310 SOUTH ST. FRANCIS DR.  
Santa Fe, New Mexico 87505

Form C-1

Revised October 12, 2009  
Submit to Appropriate District Office  
State Lease - 4 Cc  
Fee Lease - 3 Cc

WELL LOCATION AND ACREAGE DEDICATION PLAT

☐ AMENDED REPORT

API Number 30-015-37631	Pool Code 26770	Pool Name FREN; GLORIETA-YESO
Property Code 302591	Property Name YUCCA STATE	Well Number 16
OGRIID No. 229137	Operator Name COG OPERATING, LLC	Elevation 3778'

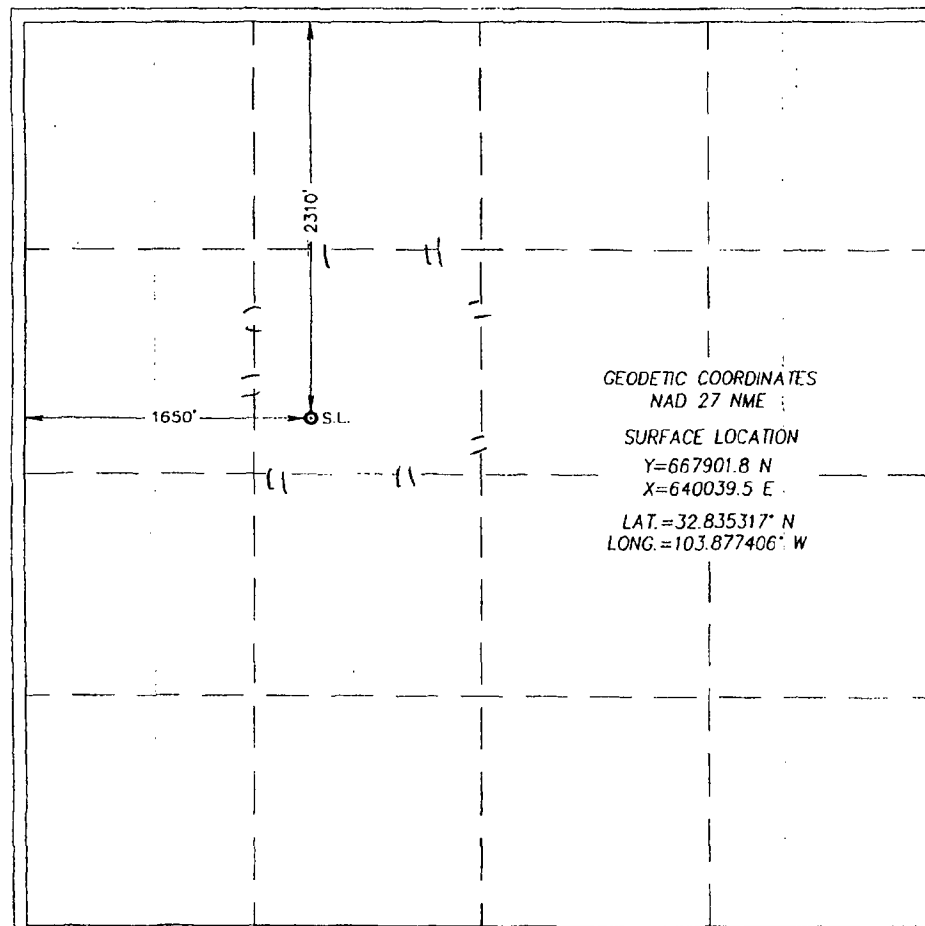
Surface Location

UL or lot No.	Section	Township	Range	Lot Ids	Feet from the	North/South line	Feet from the	East/West line	County
F	16	17-S	31-E		2310	NORTH	1650	WEST	EDDY

Bottom Hole Location If Different From Surface

UL or lot No.	Section	Township	Range	Lot Ids	Feet from the	North/South line	Feet from the	East/West line	County
Dedicated Acres 40		Joint or Infill		Consolidation Code		Order No.			

NO ALLOWABLE WILL BE ASSIGNED TO THIS COMPLETION UNTIL ALL INTERESTS HAVE BEEN CONSOLIDATED  
OR A NON-STANDARD UNIT HAS BEEN APPROVED BY THE DIVISION



OPERATOR CERTIFICATION

I hereby certify that the information herein is true and complete to the best of my knowledge and belief, and that this organization either owns a working interest or unleased mineral interest in the land including the proposed bottom hole location or has a right to drill this well at this location pursuant to a contract with an owner of such mineral or working interest, or to a voluntary pooling agreement or a compulsory pooling order heretofore entered by the division.

*Chasity Jackson* 9/8/10  
Signature Date  
Chasity Jackson  
Printed Name

SURVEYOR CERTIFICATION

I hereby certify that the well location shown on this plat was plotted from field notes of actual surveys made by me or under my supervision, and that the same is true and correct to the best of my belief.

JANUARY 29, 2010

Date Surveyed DS:  
Signature & Seal of  
Professional Surveyor

*Gary G. Eidson* 2/4/10  
09.11.1288

Certificate No. GARY G. EIDSON 12641  
RONALD J. EIDSON 3239