

RECEIVED

MAY 13 2013

District I
1623 N. French Dr., Hobbs, NM 88240
Phone: (575) 393-6161 Fax: (575) 393-0720
District II
311 S. First St., Artesia, NM 88210
Phone: (575) 748-1233 Fax: (575) 748-9720
District III
1000 Rio Brazos Road, Aztec, NM 87410
Phone: (505) 334-6178 Fax: (505) 334-6170
District IV
1220 S. St. Francis Dr., Santa Fe, NM 87505
Phone: (505) 476-3460 Fax: (505) 476-3462

State of New Mexico
Energy, Minerals & Natural Resources Department
OIL CONSERVATION DIVISION
1220 South St. Francis Dr.
Santa Fe, NM 87505

Form C-102
Revised August 1, 2011
Submit one copy to appropriate
District Office

☐ AMENDED REPORT

WELL LOCATION AND ACREAGE DEDICATION PLAT

¹ API Number 30-015-40627	² Pool Code 41480	³ Pool Name LUSK; BONE SPRING WEST
⁴ Property Code 39137	⁵ Property Name AQUILA "22" FEDERAL COM	⁶ Well Number 1H
⁷ OGRID No. 6137	⁸ Operator Name DEVON ENERGY PRODUCTION COMPANY, L.P.	⁹ Elevation 3535.9

¹⁰ Surface Location

UL or lot no.	Section	Township	Range	Lot Idn	Feet from the	North/South line	Feet from the	East/West line	County
A	22	19 S	31 E		990	NORTH	50	EAST	EDDY

¹¹ Bottom Hole Location If Different From Surface

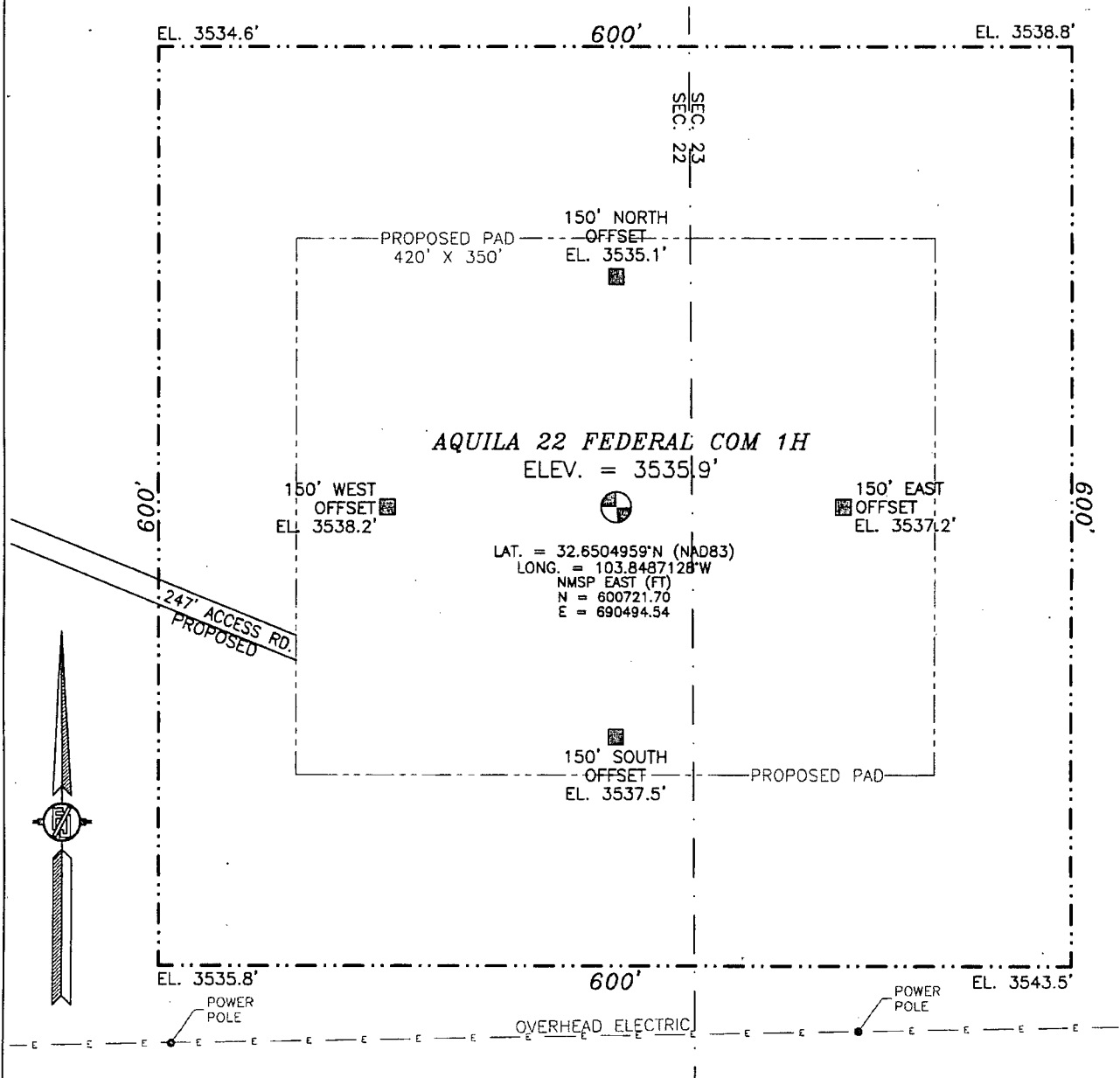
UL or lot no.	Section	Township	Range	Lot Idn	Feet from the	North/South line	Feet from the	East/West line	County
D	22	19 S	31 E		977	NORTH	349	WEST	EDDY

¹² Dedicated Acres 160	¹³ Joint or Infill	¹⁴ Consolidation Code	¹⁵ Order No.
---	-------------------------------	----------------------------------	-------------------------

No allowable will be assigned to this completion until all interests have been consolidated or a non-standard unit has been approved by the division.

<p>NW CORNER LAT. = 32.6531943°N LONG. = 103.8657142°W NMSP EAST (FT) N = 601679.93 E = 685257.46</p> <p>SW CORNER LAT. = 32.6459383°N LONG. = 103.8656908°W NMSP EAST (FT) N = 599040.17 E = 685276.29</p>	<p>N CORNER LAT. = 32.6532052°N LONG. = 103.8571400°W NMSP EAST (FT) N = 601695.64 E = 687896.37</p> <p>BOTTOM OF HOLE LAT. = 32.6504746°N LONG. = 103.8646008°W NMSP EAST (FT) N = 600691.98 E = 685604.52</p> <p>PP: 938 FNL & 14 FEL Project Area: Producing Area:</p>	<p>NE CORNER LAT. = 32.6532167°N LONG. = 103.8485583°W NMSP EAST (FT) N = 601711.78 E = 690537.57</p> <p>E CORNER LAT. = 32.6459648°N LONG. = 103.8485371°W NMSP EAST (FT) N = 599073.48 E = 690556.15</p> <p>SE CORNER LAT. = 32.6387059°N LONG. = 103.8485136°W NMSP EAST (FT) N = 596432.63 E = 690575.45</p>	<p>¹⁷ OPERATOR CERTIFICATION I hereby certify that the information contained herein is true and complete to the best of my knowledge and belief, and that this organization either owns a working interest or unleased mineral interest in the land including the proposed bottom hole location or has a right to drill this well at this location pursuant to a contract with an owner of such a mineral or working interest, or to a voluntary pooling agreement or a compulsory pooling order heretofore entered by the division.</p> <p>Signature: <i>Judy A. Barnett</i> Date: 5-10-13 Printed Name: Judy A. Barnett, Regulatory Specialist E-mail Address: Judith.Barnett@dmv.com</p> <p>¹⁸ SURVEYOR CERTIFICATION I hereby certify that the well location shown on this plat was plotted from field notes of actual surveys made by me or under my supervision, and that the same is true and correct to the best of my belief.</p> <p>AUGUST 19, 2012 Date of Survey: AUGUST 19, 2012 Signature and Seal of Professional Surveyor: <i>[Signature]</i> Certificate Number: FELIX J. JARAMILLO, PLS 12797 SURVEY NO. 853A</p>
---	---	--	--

SECTION 22, TOWNSHIP 19 SOUTH, RANGE 31 EAST, N.M.P.M.
EDDY COUNTY, STATE OF NEW MEXICO



010 50 100 200

SCALE 1" = 100'

DIRECTIONS TO LOCATION

FROM INTERSECTION OF CR 222 (SHUGART) AND CR 248 (LUSK PLANT RD) GO SOUTH ON CR 222 1.1 MILES TURN LEFT (EAST) ON CALICHE ROAD GO 0.85 MILES, SITE IS ON THE LEFT 300' +/- (EAST)

DEVON ENERGY PRODUCTION COMPANY, L.P.

AQUILA 22 FEDERAL COM 1H

LOCATED 990 FT. FROM THE NORTH LINE
AND 50 FT. FROM THE EAST LINE OF
SECTION 22, TOWNSHIP 19 SOUTH,
RANGE 31 EAST, N.M.P.M.
EDDY COUNTY, STATE OF NEW MEXICO

SURVEY NO. 853A

AUGUST 9, 2012

MADRON SURVEYING, INC.

301 SOUTH CANAL
(575) 234-3341

CARLSBAD, NEW MEXICO

[illegible]

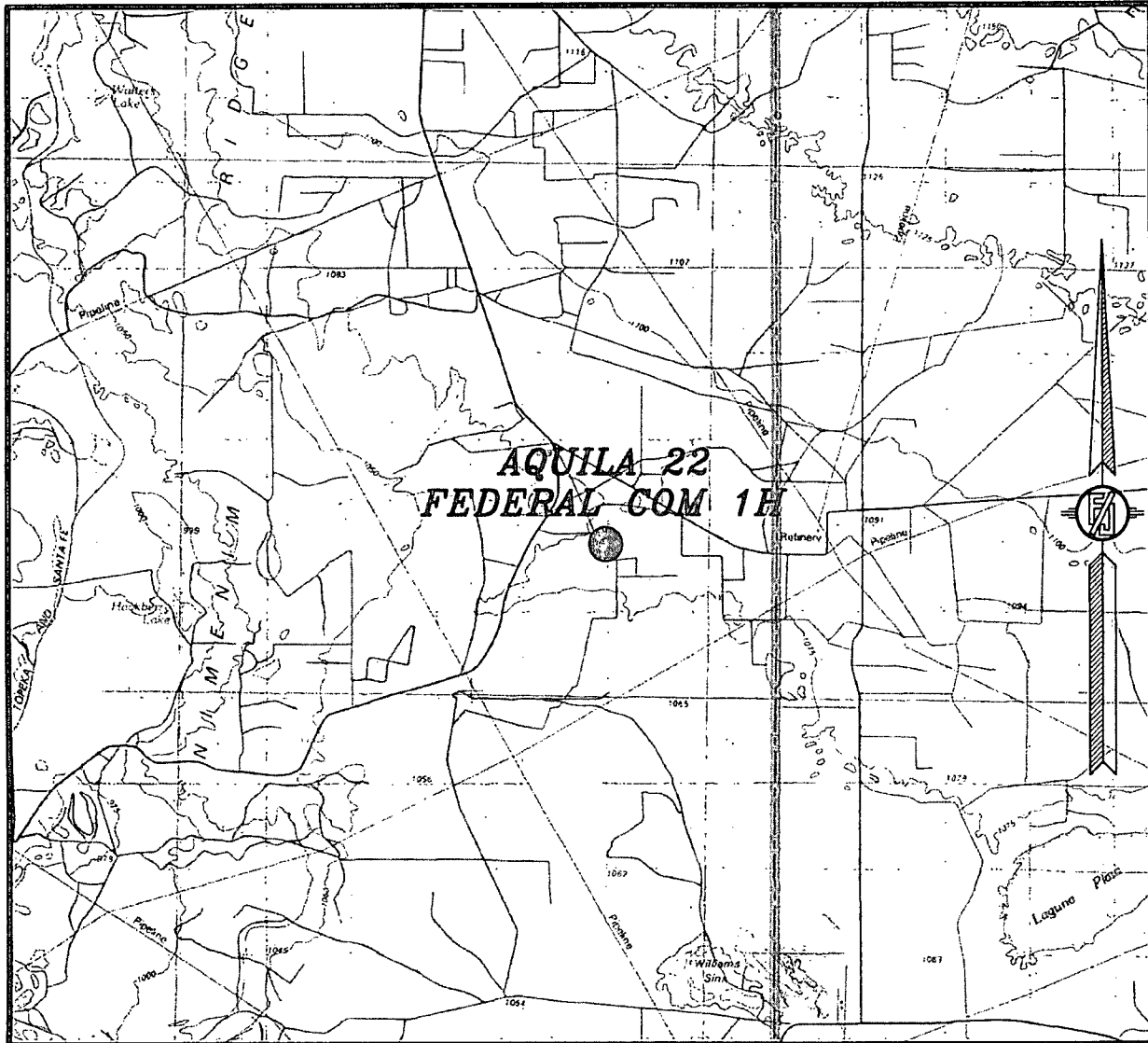
NOT TO SCALE

AUGUST 9, 2012

MADRON SURVEYING, INC. 301 SOUTH CANAL (575) 234-3341 CARLSBAD, NEW MEXICO

301 SOUTH CANAL
(575) 234-3341

SECTION 22, TOWNSHIP 19 SOUTH, RANGE 31 EAST, N.M.P.M.
EDDY COUNTY, STATE OF NEW MEXICO
VICINITY MAP



NOT TO SCALE

DEVON ENERGY PRODUCTION COMPANY, L.P.
AQUILA 22 FEDERAL COM 1H
LOCATED 990 FT. FROM THE NORTH LINE
AND 50 FT. FROM THE EAST LINE OF
SECTION 22, TOWNSHIP 19 SOUTH,
RANGE 31 EAST, N.M.P.M.
EDDY COUNTY, STATE OF NEW MEXICO

AUGUST 9, 2012

SURVEY NO. 853A

MADRON SURVEYING, INC. 301 SOUTH CANAL CARLSBAD, NEW MEXICO
(575) 234-3341