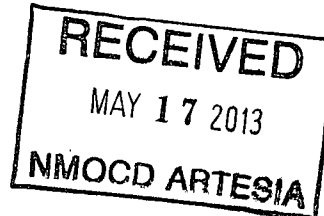


District I  
1625 N. French Dr., Hobbs, NM 88240  
Phone: (575) 393-6161 Fax: (575) 393-0720  
District II  
811 S. First St., Artesia, NM 88210  
Phone: (575) 748-1283 Fax: (575) 748-9720  
District III  
1000 Rio Brazos Road, Aztec, NM 87410  
Phone: (505) 334-6178 Fax: (505) 334-6170  
District IV  
1220 S. St. Francis Dr., Santa Fe, NM 87505  
Phone: (505) 476-3460 Fax: (505) 476-3462

State of New Mexico  
Energy Minerals and Natural Resources

Form C-101  
Revised December 16, 2011

Oil Conservation Division  
1220 South St. Francis Dr.  
Santa Fe, NM 87505



Permit

**APPLICATION FOR PERMIT TO DRILL, RE-ENTER, DEEPEN, PLUGBACK, OR ADD A ZONE**

<sup>1</sup> Operator Name and Address Wildcat Energy, LLC P.O. Box 13323 Odessa, Tx 79768		<sup>2</sup> OGRID Number 209564
		<sup>3</sup> API Number 30-015-25253
<sup>4</sup> Property Code 007685	<sup>5</sup> Property Name Henry	<sup>6</sup> Well No. 2

**<sup>7</sup> Surface Location**

UL - Lot	Section	Township	Range	Lot Idn	Feet from	N/S Line	Feet From	E/W Line	County
I	22	22S	27E		1570	South	990	East	Eddy

**<sup>8</sup> Pool Information**

DHC-2880 Carlsbad - Strawn Gas Pool & South Carlsbad- Morrow Gas Pool	
---	--

**Additional Well Information**

<sup>9</sup> Work Type P	<sup>10</sup> Well Type G	<sup>11</sup> Cable/Rotary	<sup>12</sup> Lease Type P	<sup>13</sup> Ground Level Elevation 3098.3
<sup>14</sup> Multiple N	<sup>15</sup> Proposed Depth 11,515' PB	<sup>16</sup> Formation Morrow	<sup>17</sup> Contractor	<sup>18</sup> Spud Date
Depth to Ground water		Distance from nearest fresh water well		Distance to nearest surface water

**<sup>19</sup> Proposed Casing and Cement Program**

Type	Hole Size	Casing Size	Casing Weight/ft	Setting Depth	Sacks of Cement	Estimated TOC
	17-1/2"	13-3/8"	54.5#	230	10	Surface
	12-1/4"	10-3/4"	51#	2120	50	Surface
	9-1/2"	7-5/8"	29.7#	9014	1160	4100'
	6-1/2"	5"	18#	8634-12290	500	Circulated

**Casing/Cement Program: Additional Comments**

Dump 35' cement on top of CIBP to be set at 11,550' for a PBTD of 11,515'.
--

**Proposed Blowout Prevention Program**

Type	Working Pressure	Test Pressure	Manufacturer
7-1/16" Manual	3000#	3000#	Unknown

I hereby certify that the information given above is true and complete to the best of my knowledge and belief.

I further certify that the drilling pit will be constructed according to NMOCD guidelines ☐, a general permit ☐, or an (attached) alternative OCD-approved plan ☒.

Signature: *RL Becker*

Printed name: R. L. Becker

Title: President

E-mail Address: rbecker@netwest.com

Date: May 15, 2013

Phone: 432-528-8613

**OIL CONSERVATION DIVISION**

Approved By:

*T. C. Shepard*  
*Geologist*

Title:

Approved Date: *5/28/2013*

Expiration Date: *5/28/2015*

Conditions of Approval Attached

## **CLOSED-LOOP SYSTEM PERMIT APPLICATION ATTACHMENT**

WILDCAT ENERGY, LLC

Henry #2

Unit I, Sec 22, T22S, R27E

Eddy Co., NM

API#: 30-015-25253

### **Equipment & Design:**

Wildcat Energy, LLC will use a closed loop system in the workover of this well. The following equipment will be on location:

- (1) 160 bbl steel reverse tank (will be used during fishing and cleanout operations should any be necessary during this job, although none is anticipated to be required)
- (2) Two 500 bbl frac tanks (will be used if the well is stimulated following workover operations. One will be for pre-treatment and flush fluids, the other will be for flowback purposes).

### **Operations & Maintenance:**

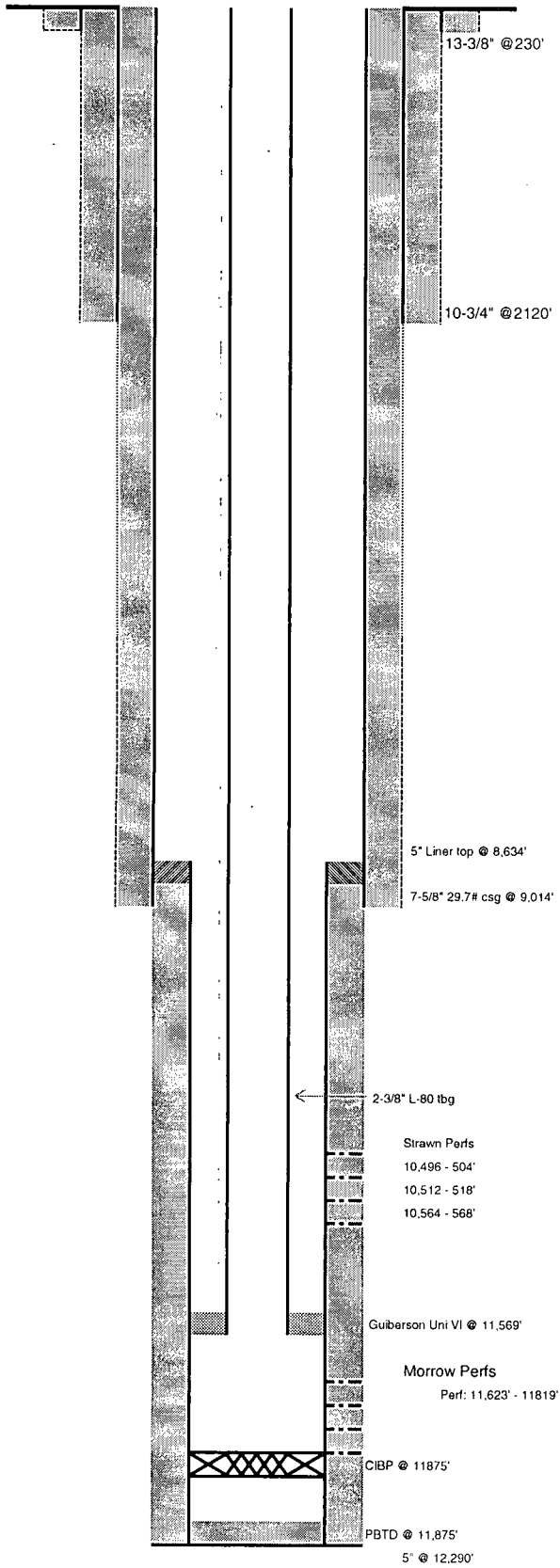
During each day of operation, the rig's crew will inspect and closely monitor the fluids contained within the steel tanks and visually monitor any release that may occur. Should a release, spill or leak occur, the NMOCD District 2 office in Hobbs (575-748-1283) will be notified, as required in NMOCD's rule 19.15.29.8

### **Closure:**

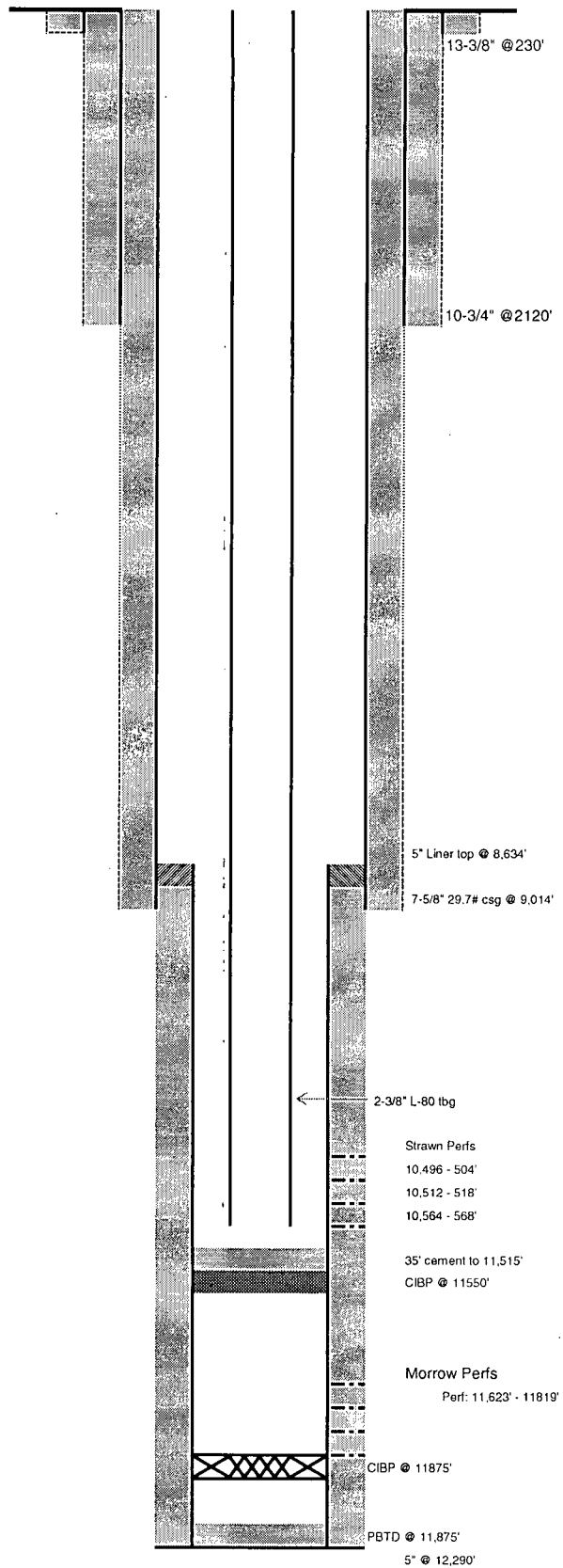
During and after workover operations, all fluids will be hauled and disposed of at the Aqueus Operating State DU SWD disposal site, south of Carlsbad, NM or the Mesquite Exxon State SWD, NE of Carlsbad, NM.

Henry #2  
Sec 22, T 22S R27E, Eddy Co., NM

Original Completion



Proposed Completion





## WORKOVER PROCEDURE

SCOPE OF WORK: Set CIBP above Morrow perms to shutoff water, swab Strawn, return to prod.

1. MIRU DDU. ND wellhead. NU 7-1/6" BOP.
2. Unseat Uni-VI pkr and POOH. LD pkr.
3. MIRU wireline unit. RIH and set CIBP at 11'550'. Dump bail 35' of cement on top of CIBP. RDMO wireline unit.
4. RIH with 2-3/8" tbg, Laydown +/- 960' of tbg to place EOT at +/-10,600'.
5. ND BOP. NU wellhead.
6. Swab well down thru prod separator and to oil tank.
7. RDMO DDU.