

District I
1625 N. French Dr., Hobbs, NM 88240
District II
1301 W. Grand Avenue, Artesia, NM 88210
District III
1000 Rio Brazos Road, Aztec, NM 87410
District IV
1220 S. St. Francis Dr., Santa Fe, NM 87505

State of New Mexico
Energy Minerals and Natural Resources
Department
Oil Conservation Division
1220 South St. Francis Dr.
Santa Fe, NM 87505

Form C-144 CLEZ
July 21, 2008

For closed-loop systems that only use above ground steel tanks or haul-off bins and propose to implement waste removal for closure, submit to the appropriate NMOCD District Office.

Closed-Loop System Permit or Closure Plan Application

(that only use above ground steel tanks or haul-off bins and propose to implement waste removal for closure)

Type of action: ☒ Permit ☐ Closure

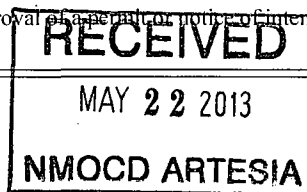
Instructions: Please submit one application (Form C-144 CLEZ) per individual closed-loop system request. For any application request other than for a closed-loop system that only use above ground steel tanks or haul-off bins and propose to implement waste removal for closure, please submit a Form C-144.

Please be advised that approval of this request does not relieve the operator of liability should operations result in pollution of surface water, ground water or the environment. Nor does approval relieve the operator of its responsibility to comply with any other applicable governmental authority's rules, regulations or ordinances.

1. Operator: Apache Corporation OGRID #: 873
Address: 303 Veterans Airpark Lane, Suite 3000 Midland, TX 79705
Facility or well name: Raven Federal #1 (39330)
API Number: 30-015-40465 OCD Permit Number: 214369
U/L or Qtr/Qtr L Section 07 Township 17S Range 31E County: Eddy
Center of Proposed Design: Latitude 32.8477672749222 Longitude -103.913707059512 NAD: ☒ 1927 ☐ 1983
Surface Owner: ☒ Federal ☐ State ☐ Private ☐ Tribal Trust or Indian Allotment

2. ☒ **Closed-loop System:** Subsection H of 19.15.17.11 NMAC
Operation: ☐ Drilling a new well ☒ Workover or Drilling (Applies to activities which require prior approval of a permit or notice of intent) ☐ P&A
☐ Above Ground Steel Tanks or ☐ Haul-off Bins

3. **Signs:** Subsection C of 19.15.17.11 NMAC
☐ 12"x 24", 2" lettering, providing Operator's name, site location, and emergency telephone numbers
☒ Signed in compliance with 19.15.3.103 NMAC



4. **Closed-loop Systems Permit Application Attachment Checklist:** Subsection B of 19.15.17.9 NMAC
Instructions: Each of the following items must be attached to the application. Please indicate, by a check mark in the box, that the documents are attached.
☒ Design Plan - based upon the appropriate requirements of 19.15.17.11 NMAC
☒ Operating and Maintenance Plan - based upon the appropriate requirements of 19.15.17.12 NMAC
☒ Closure Plan (Please complete Box 5) - based upon the appropriate requirements of Subsection C of 19.15.17.9 NMAC and 19.15.17.13 NMAC
☐ Previously Approved Design (attach copy of design) API Number: _____
☐ Previously Approved Operating and Maintenance Plan API Number: _____

5. **Waste Removal Closure For Closed-loop Systems That Utilize Above Ground Steel Tanks or Haul-off Bins Only:** (19.15.17.13.D NMAC)
Instructions: Please identify the facility or facilities for the disposal of liquids, drilling fluids and drill cuttings. Use attachment if more than two facilities are required.
Disposal Facility Name: CRI Disposal Facility Permit Number: NM-01-0006
Disposal Facility Name: Sundance, Inc. Disposal Facility Permit Number: NM-01-0003
Will any of the proposed closed-loop system operations and associated activities occur on or in areas that will not be used for future service and operations?
☐ Yes (If yes, please provide the information below) ☒ No
Required for impacted areas which will not be used for future service and operations:
☐ Soil Backfill and Cover Design Specifications - based upon the appropriate requirements of Subsection H of 19.15.17.13 NMAC
☐ Re-vegetation Plan - based upon the appropriate requirements of Subsection I of 19.15.17.13 NMAC
☐ Site Reclamation Plan - based upon the appropriate requirements of Subsection G of 19.15.17.13 NMAC

6. **Operator Application Certification:**
I hereby certify that the information submitted with this application is true, accurate and complete to the best of my knowledge and belief.
Name (Print): Fatima Vasquez Title: Regulatory Tech I
Signature: [Signature] Date: 05/20/2013
e-mail address: Fatima.Vasquez@apachecorp.com Telephone: (432) 818-1015

7. **OCD Approval:** ☒ Permit Application (including closure plan) ☐ Closure Plan (only)

OCD Representative Signature: AR Wade Approval Date: 5/24/2013

Title: Dist R Supervisor OCD Permit Number: 214369

8. **Closure Report (required within 60 days of closure completion):** Subsection K of 19.15.17.13 NMAC

Instructions: Operators are required to obtain an approved closure plan prior to implementing any closure activities and submitting the closure report. The closure report is required to be submitted to the division within 60 days of the completion of the closure activities. Please do not complete this section of the form until an approved closure plan has been obtained and the closure activities have been completed.

☒ Closure Completion Date: _____

9. **Closure Report Regarding Waste Removal Closure For Closed-loop Systems That Utilize Above Ground Steel Tanks or Haul-off Bins Only:**

Instructions: Please indentify the facility or facilities for where the liquids, drilling fluids and drill cuttings were disposed. Use attachment if more than two facilities were utilized.

Disposal Facility Name: CRI Disposal Facility Permit Number: NM-01-0006

Disposal Facility Name: _____ Disposal Facility Permit Number: _____

Were the closed-loop system operations and associated activities performed on or in areas that *will not* be used for future service and operations?

☐ Yes (If yes, please demonstrate compliance to the items below) ☒ No

Required for impacted areas which will not be used for future service and operations:

- ☐ Site Reclamation (Photo Documentation)
☐ Soil Backfilling and Cover Installation
☐ Re-vegetation Application Rates and Seeding Technique

10. **Operator Closure Certification:**

I hereby certify that the information and attachments submitted with this closure report is true, accurate and complete to the best of my knowledge and belief. I also certify that the closure complies with all applicable closure requirements and conditions specified in the approved closure plan.

Name (Print): Fatima Vasquez Title: Regulatory Tech I

Signature: _____ Date: _____

e-mail address: Fatima.Vasquez@apachecorp.com Telephone: (432) 818-1015

APACHE CORPORATION

5/21/2013

API 30-015-40465

Raven Federal #1

RE-COMPLETION PROCEDURE

Relative Data:

Casing: 5-1/2", 17 lb/ft, J-55

ID = 4.892"

Drift = 4.767"

Capacity = 0.02324 BBL/ft

Burst = 5320 psi; 80% = 4256 psi

Tubing: 2-7/8", 6.5 lb/ft, J-55, 8rd, EUE

Capacity = 0.005794 bbl/ft

Burst = 7260 psi; 80% = 5808 psi

Collapse 7680 psi; 80% = 6144 psi

Yield 99,660 lbs; 80% = 79,728 lbs

5-1/2" x 2-7/8" Annular capacity 0.0152 BBL/ft KB = 13 ft (AGL) PBTD = x,xxx' KB TD = 6,416' KB

1. MIRU. POH w/Production Equipment. RIH set & test CBP @ +/-5850'. Load csg & test CBP & csg to 1000 psi. Rlse pressure
2. Spot 600 gallons 15% HCL across perf area. TOH.
3. Perforate the Blinbry zone @ 5320, 28, 54, 65, 85, 5410, 31, 50, 67, 90, 5516, 28, 49, 60, 78, 97, 5616, 38, 47, 77, 5715, 33, 50, 65, 90 & 5810'. (1 JSPF) (26 holes) using a charge that generates a .37" - .42" diameter hole with a minimum 21" penetration.
4. RU wellhead tree saver & multi-stg frac tool for fracture stimulating.
5. Acidize/Frac the Blinbry dn csg according to vendor recommended procedure.
6. MIRU wireline. RIH W/WL set CBP for 5-1/2" 17#/ft csg on bottom of first perforating gun & set @ +/-5270'. Load csg & test CBP & csg to 1000 psi. Rlse pressure.
7. Perforate the Paddock @ 4655, 71, 85, 99, 4720, 43, 54, 79, 89, 4810, 28, 58, 78, 94, 4910, 36, 60, 81, 95, 5013, 26, 50, 85, 5115, 37, 61, 80, 5200 & 30'. (1 JSPF) (29 holes) using a charge that generates a .37" - .42" diameter hole with a min. 21" penetration.
8. Acidize & frac the Paddock perms dn csg according to vendor recommended procedure.
9. Flow back well until dead. RU reverse unit & swivel.
10. TIH W/4-3/4" bit, bit sub, XO, 6 - 3" DCs, XO, & 2-7/8" tbg to top of fill. DO CBPs @ +/-5270', 5850' and CO well to PBTD (COMMINGLING ALL ZONES). Reverse circ clean. TOH & LD DCs & bit.
11. Hydrotest in hole with W/tbg for production as specified by the Artesia office. TIH W/pump & rods as specified by the Artesia office.
12. MIRU pumping unit. Connect electrical service. Construct & tie in flowline. Place well into production.

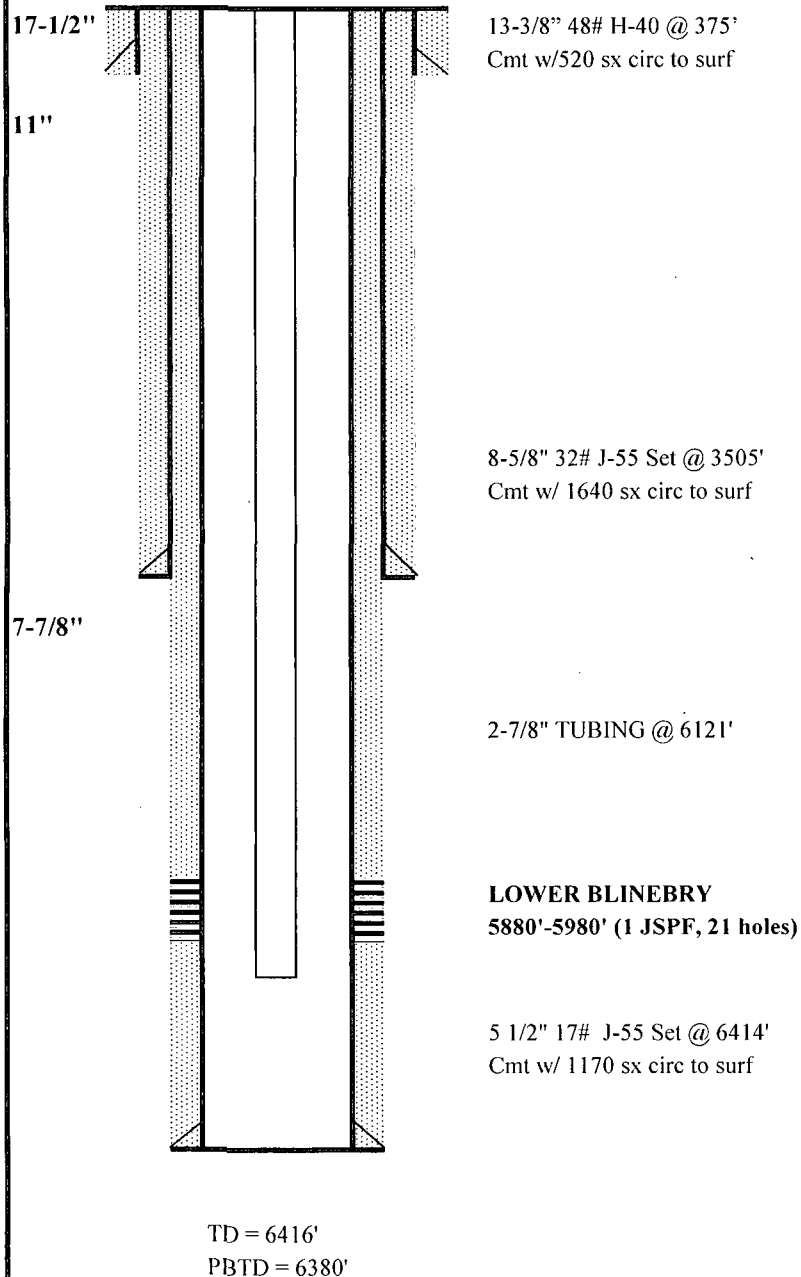
Apache Corp.
Current Wellbore

GROUP: Permian North
FIELD: Cedar Lake
LEASE/UNIT: Raven Federal
COUNTY: Eddy
API NUMBER: 30-015-40465

DATE: May. 20, 2013
BY: SNH
WELL: #1
STATE: New Mexico

Spud Date: 10/3/2012
Rig Release Date: 10/21/2012

KB = 14'
GL = 3715'



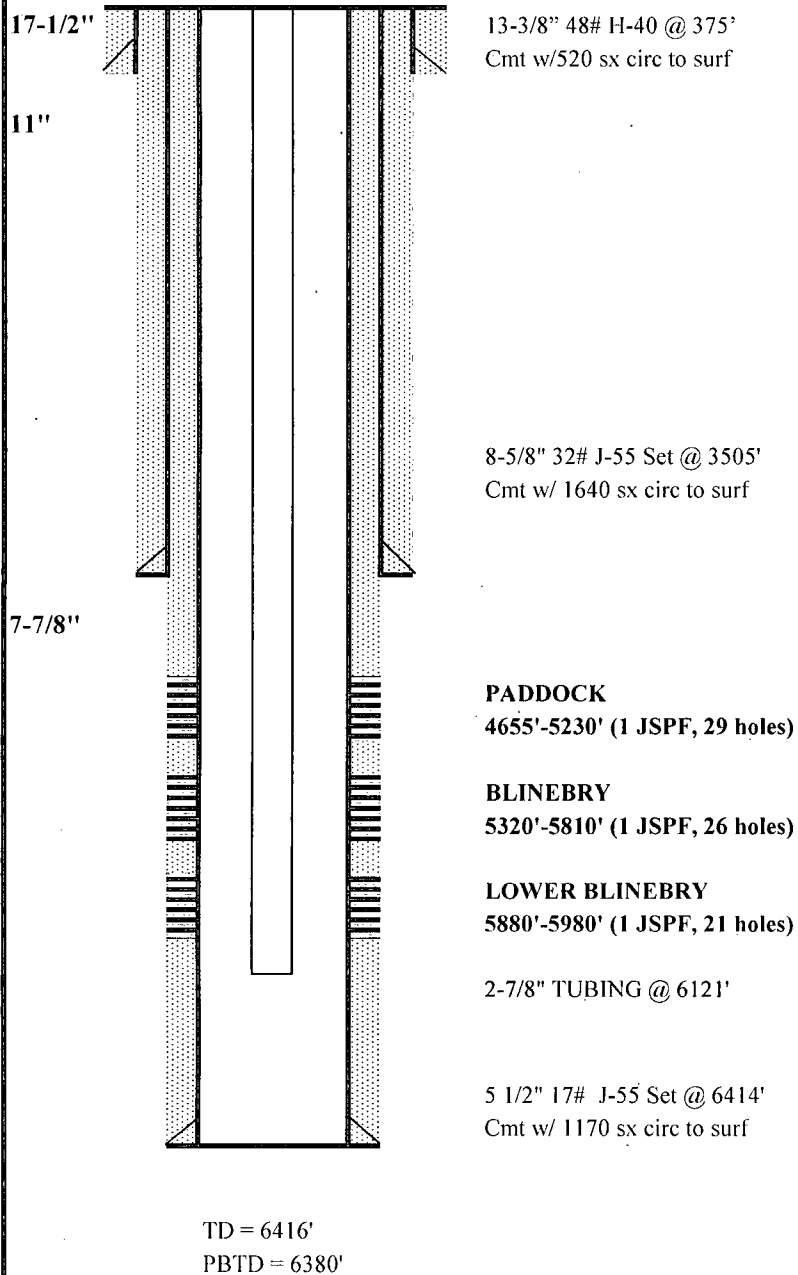
Apache Corp.
Proposed Wellbore

GROUP: Permian North
FIELD: Cedar Lake
LEASE/UNIT: Raven Federal
COUNTY: Eddy
API NUMBER: 30-015-40465

DATE: May. 20, 2013
BY: SNH
WELL: #1
STATE: New Mexico

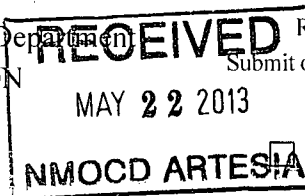
Spud Date: 10/3/2012
Rig Release Date: 10/21/2012

KB = 14'
GL = 3715'



District I
1625 N. French Dr., Hobbs, NM 88240
Phone: (575) 393-6161 Fax: (575) 393-0720
District II
811 S. First St., Artesia, NM 88210
Phone: (575) 748-1283 Fax: (575) 748-9720
District III
1000 Rio Brazos Road, Aztec, NM 87410
Phone: (505) 334-6178 Fax: (505) 334-6170
District IV
1220 S. St. Francis Dr., Santa Fe, NM 87505
Phone: (505) 476-3460 Fax: (505) 476-3462

State of New Mexico
Energy, Minerals & Natural Resources Department
OIL CONSERVATION DIVISION
1220 South St. Francis Dr.
Santa Fe, NM 87505



Form C-102
Revised August 1, 2011
Submit one copy to appropriate
District Office
AMENDED REPORT

WELL LOCATION AND ACREAGE DEDICATION PLAT

¹ API Number 30-015-40465	² Pool Code 96831	³ Pool Name Cedar Lake; Glorieta-Yeso (O)
⁴ Property Code 39330	⁵ Property Name Raven Federal	⁶ Well Number 001
⁷ OGRID No. 873	⁸ Operator Name Apache Corporation: 303 Veterans Airpark Lane, Suite 3000 Midland, TX 79705	⁹ Elevation 3715' GR

¹⁰ Surface Location

UL or lot no.	Section	Township	Range	Lot Idn	Feet from the	North/South line	Feet from the	East/West line	County
L	07	17S	31E	3	2190	South	990	West	Eddy

¹¹ Bottom Hole Location If Different From Surface

UL or lot no.	Section	Township	Range	Lot Idn	Feet from the	North/South line	Feet from the	East/West line	County

¹² Dedicated Acres 40.0	¹³ Joint or Infill	¹⁴ Consolidation Code	¹⁵ Order No.
---------------------------------------	-------------------------------	----------------------------------	-------------------------

No allowable will be assigned to this completion until all interests have been consolidated or a non-standard unit has been approved by the division.

	<p>¹⁶</p>				<p>¹⁷ OPERATOR CERTIFICATION I hereby certify that the information contained herein is true and complete to the best of my knowledge and belief, and that this organization either owns a working interest or unleased mineral interest in the land including the proposed bottom hole location or has a right to drill this well at this location pursuant to a contract with an owner of such a mineral or working interest, or to a voluntary pooling agreement or a compulsory pooling order heretofore entered by the division.</p> <p> 05/20/2013</p> <p>Signature Date</p> <p>Fatima Vasquez</p> <p>Printed Name</p> <p>Fatima.Vasquez@apachecorp.com</p> <p>E-mail Address</p>
<p>¹⁸ SURVEYOR CERTIFICATION I hereby certify that the well location shown on this plat was plotted from field notes of actual surveys made by me or under my supervision, and that the same is true and correct to the best of my belief.</p> <p>Date of Survey</p> <p>Signature and Seal of Professional Surveyor:</p> <p>Certificate Number</p>					