

DISTRICT I
 1625 N. French Dr., Hobbs, NM 88240
 Phone (575) 393-6161 Fax: (575) 393-0720

DISTRICT II
 811 S. First St., Artesia, NM 88210
 Phone (575) 746-1283 Fax: (575) 746-9720

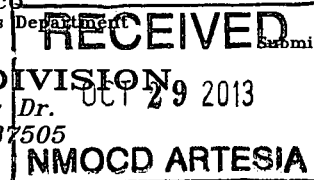
DISTRICT III
 1000 Rio Brazos Rd., Aztec, NM 87410
 Phone (505) 334-6178 Fax: (505) 334-6170

DISTRICT IV
 1220 S. St. Francis Dr., Santa Fe, NM 87505
 Phone (505) 476-3460 Fax: (505) 476-3462

State of New Mexico
 Energy, Minerals and Natural Resources Department

Form C-102
 Revised August 1, 2011
 Submit one copy to appropriate
 District Office

OIL CONSERVATION DIVISION
 1220 South St. Francis Dr.
 Santa Fe, New Mexico 87505



176052

WELL LOCATION AND ACREAGE DEDICATION PLAT

AMENDED REPORT

API Number 30-015-41755	Pool Code 97565	Pool Name North Seven Rivers: Glorieta-Yeso
Property Code 15788	Property Name PATRIOT AIZ	Well Number 13H
OGRID No. 025575	Operator Name YATES PETROLEUM CORPORATION	Elevation 3504

Surface Location

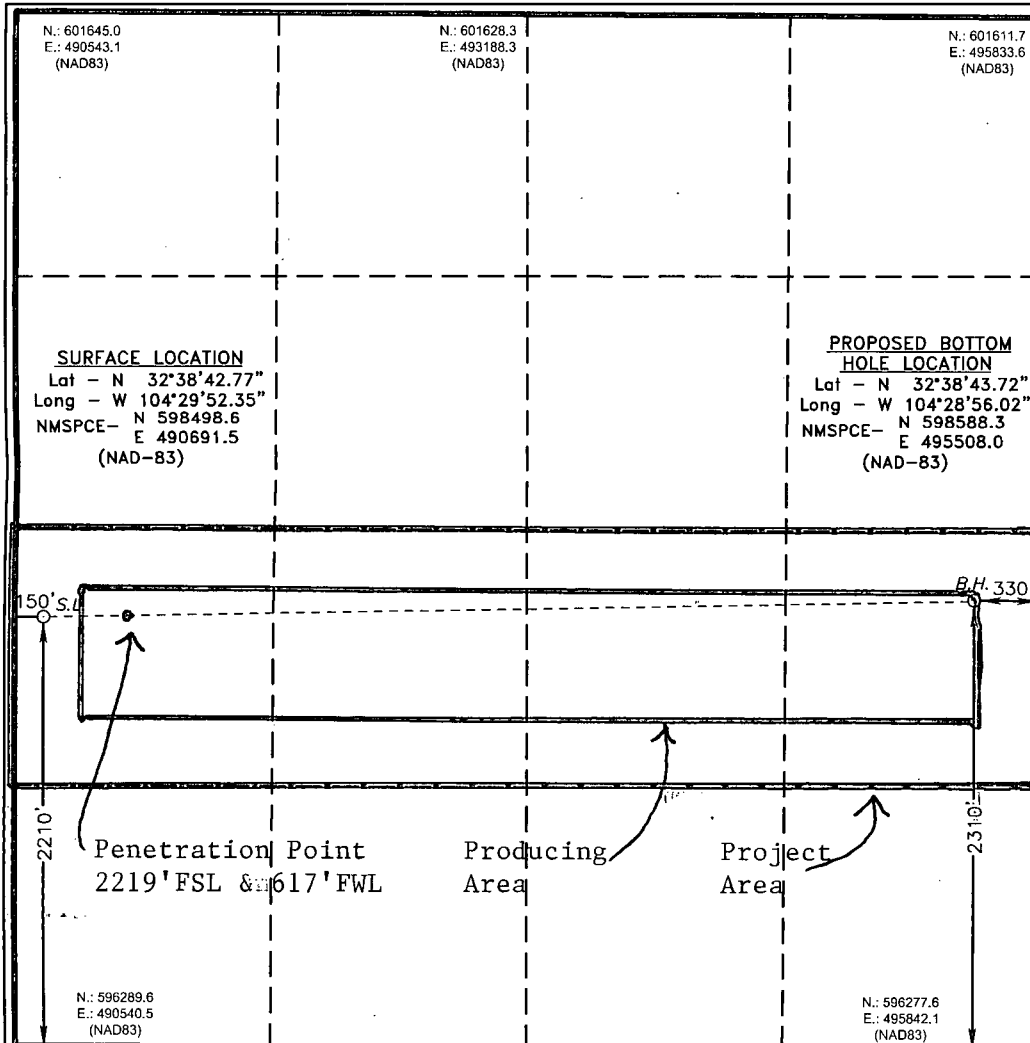
UL or lot No.	Section	Township	Range	Lot Idn	Feet from the	North/South line	Feet from the	East/West line	County
L	21	19 S	25 E		2210'	SOUTH	150	WEST	EDDY

Bottom Hole Location If Different From Surface

UL or lot No.	Section	Township	Range	Lot Idn	Feet from the	North/South line	Feet from the	East/West line	County
I	21	19 S	25 E		2310'	SOUTH	330'	EAST	EDDY

Dedicated Acres	Joint or Infill	Consolidation Code	Order No.
160			

NO ALLOWABLE WILL BE ASSIGNED TO THIS COMPLETION UNTIL ALL INTERESTS HAVE BEEN CONSOLIDATED OR A NON-STANDARD UNIT HAS BEEN APPROVED BY THE DIVISION



OPERATOR CERTIFICATION

I hereby certify that the information contained herein is true and complete to the best of my knowledge and belief, and that this organization either owns a working interest or unLEASEd mineral interest in the land including the proposed bottom hole location or has a right to drill this well at this location pursuant to a contract with an owner of such a mineral or working interest, or to a voluntary pooling agreement or a compulsory pooling order heretofore entered by the division.

Travis Hahn 10/28/13
 Signature Date

Travis Hahn
 Printed Name

thahn@yatespetroleum.com
 Email Address

SURVEYOR CERTIFICATION

I hereby certify that the well location shown on this plat was plotted from field notes of actual surveys made by me or under my supervision and that the same is true and correct to the best of my belief.

OCTOBER 29 2013
 Date Surveyed

[Signature]
 Signature & Seal of Professional Surveyor

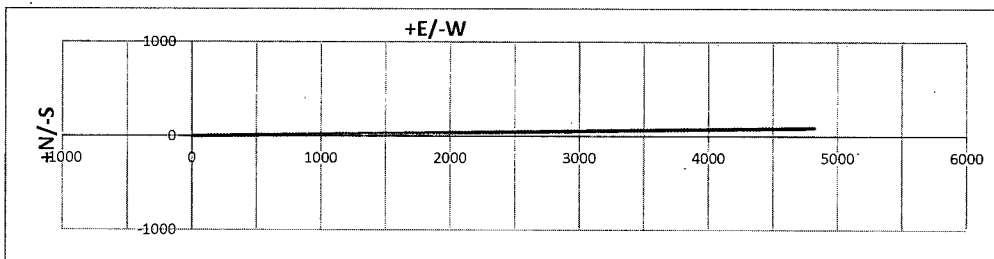
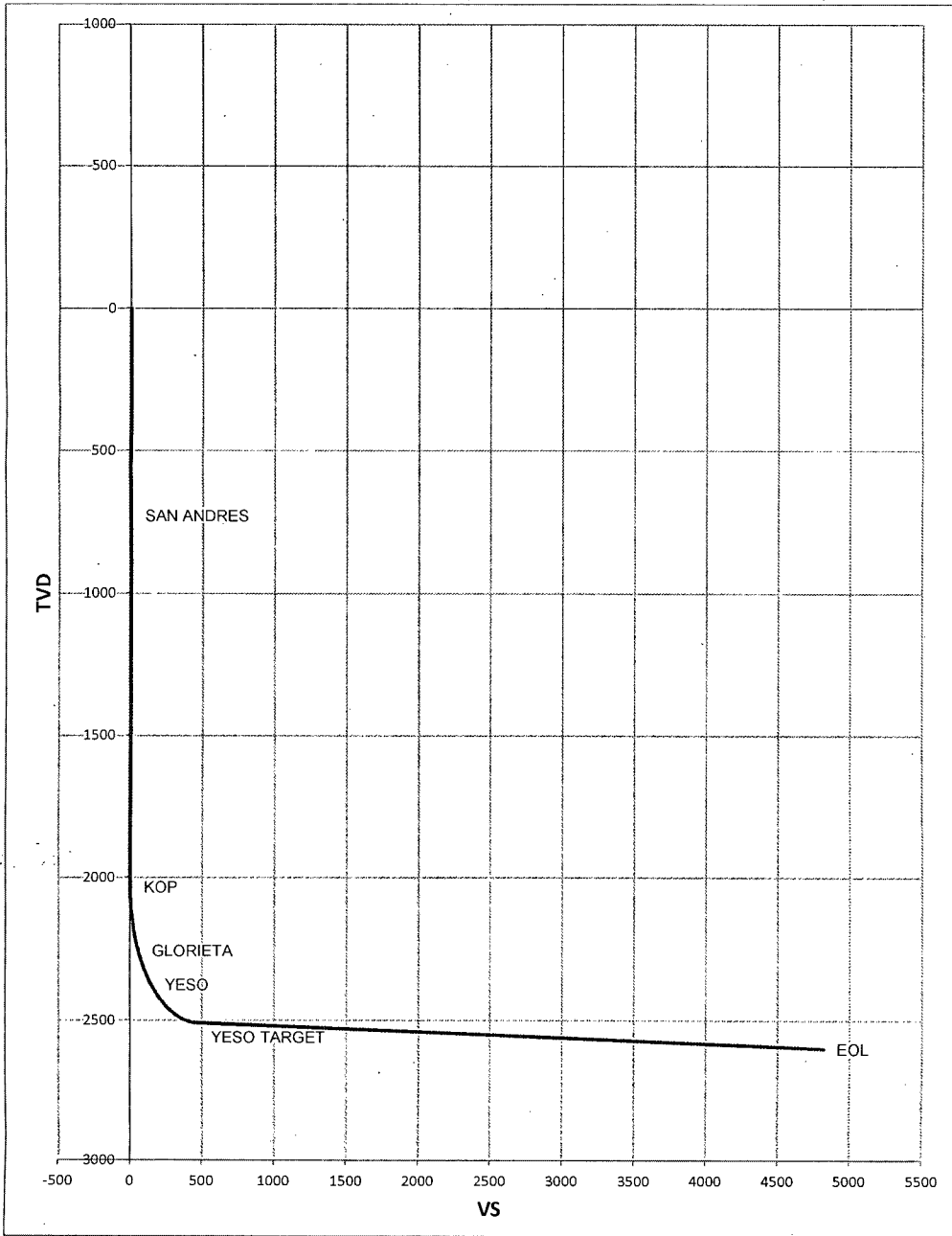
Certificate No. 7977

SCALE: 1" = 1000'
 WO Num.: 29464

Well Name:	Patriot AIZ #13H	Tgt N/S:	89.70	EOC TVD/MD:	2509.71 / 2772.43
Surface Location:	Section 21 , Township 19S Range 25E	Tgt E/W:	4816.50	VS:	4817.34
Bottom Hole Location:	Section 21 , Township 19S Range 25E	VS Az:	88.93	EOL TVD/MD:	2600.00 / 7122.21

MD	Inc.	Azi.	TVD	+N/S	+E/W	VS	DLS	Comments
0	0	0	0	0	0	0	0	
730.00	0.00	0.00	730.00	0.00	0.00	0.00	0.00	SAN ANDRES
2032.34	0.00	0.00	2032.34	0.00	0.00	0.00	0.00	KOP
2050.00	2.12	88.93	2050.00	0.01	0.33	0.33	12.00	
2075.00	5.12	88.93	2074.94	0.04	1.90	1.90	12.00	
2100.00	8.12	88.93	2099.77	0.09	4.78	4.79	12.00	
2125.00	11.12	88.93	2124.42	0.17	8.96	8.96	12.00	
2150.00	14.12	88.93	2148.81	0.27	14.42	14.42	12.00	
2175.00	17.12	88.93	2172.89	0.39	21.15	21.15	12.00	
2200.00	20.12	88.93	2196.58	0.54	29.13	29.13	12.00	
2225.00	23.12	88.93	2219.81	0.71	38.34	38.34	12.00	
2250.00	26.12	88.93	2242.54	0.91	48.75	48.76	12.00	
2263.98	27.79	88.93	2255.00	1.03	55.08	55.09	12.00	GLORIETA
2275.00	29.12	88.93	2264.69	1.12	60.33	60.35	12.00	
2300.00	32.12	88.93	2286.20	1.36	73.06	73.08	12.00	
2325.00	35.12	88.93	2307.02	1.62	86.90	86.92	12.00	
2350.00	38.12	88.93	2327.08	1.90	101.81	101.83	12.00	
2375.00	41.12	88.93	2346.34	2.19	117.75	117.77	12.00	
2400.00	44.12	88.93	2364.73	2.51	134.67	134.69	12.00	
2414.51	45.86	88.93	2375.00	2.70	144.92	144.94	12.00	YESO
2425.00	47.12	88.93	2382.21	2.84	152.53	152.56	12.00	
2450.00	50.12	88.93	2398.74	3.19	171.29	171.32	12.00	
2475.00	53.12	88.93	2414.26	3.55	190.88	190.91	12.00	
2500.00	56.12	88.93	2428.73	3.93	211.25	211.29	12.00	
2525.00	59.12	88.93	2442.12	4.33	232.36	232.40	12.00	
2550.00	62.12	88.93	2454.38	4.73	254.14	254.18	12.00	
2575.00	65.12	88.93	2465.49	5.15	276.53	276.58	12.00	
2600.00	68.12	88.93	2475.41	5.58	299.47	299.52	12.00	
2625.00	71.12	88.93	2484.12	6.01	322.90	322.95	12.00	
2650.00	74.12	88.93	2491.58	6.46	346.75	346.81	12.00	
2675.00	77.12	88.93	2497.79	6.91	370.96	371.02	12.00	
2700.00	80.12	88.93	2502.73	7.36	395.46	395.53	12.00	
2725.00	83.12	88.93	2506.37	7.83	420.19	420.26	12.00	
2750.00	86.12	88.93	2508.71	8.29	445.07	445.15	12.00	
2772.43	88.81	88.93	2509.71	8.71	467.47	467.56	12.00	YESO TARGET
7122.21	88.81	88.93	2600.00	89.70	4816.50	4817.34	0.00	EOL

Patriot AIZ #13H



**Yates Petroleum Corporation
105 S. Fourth Street
Artesia, NM 88210**

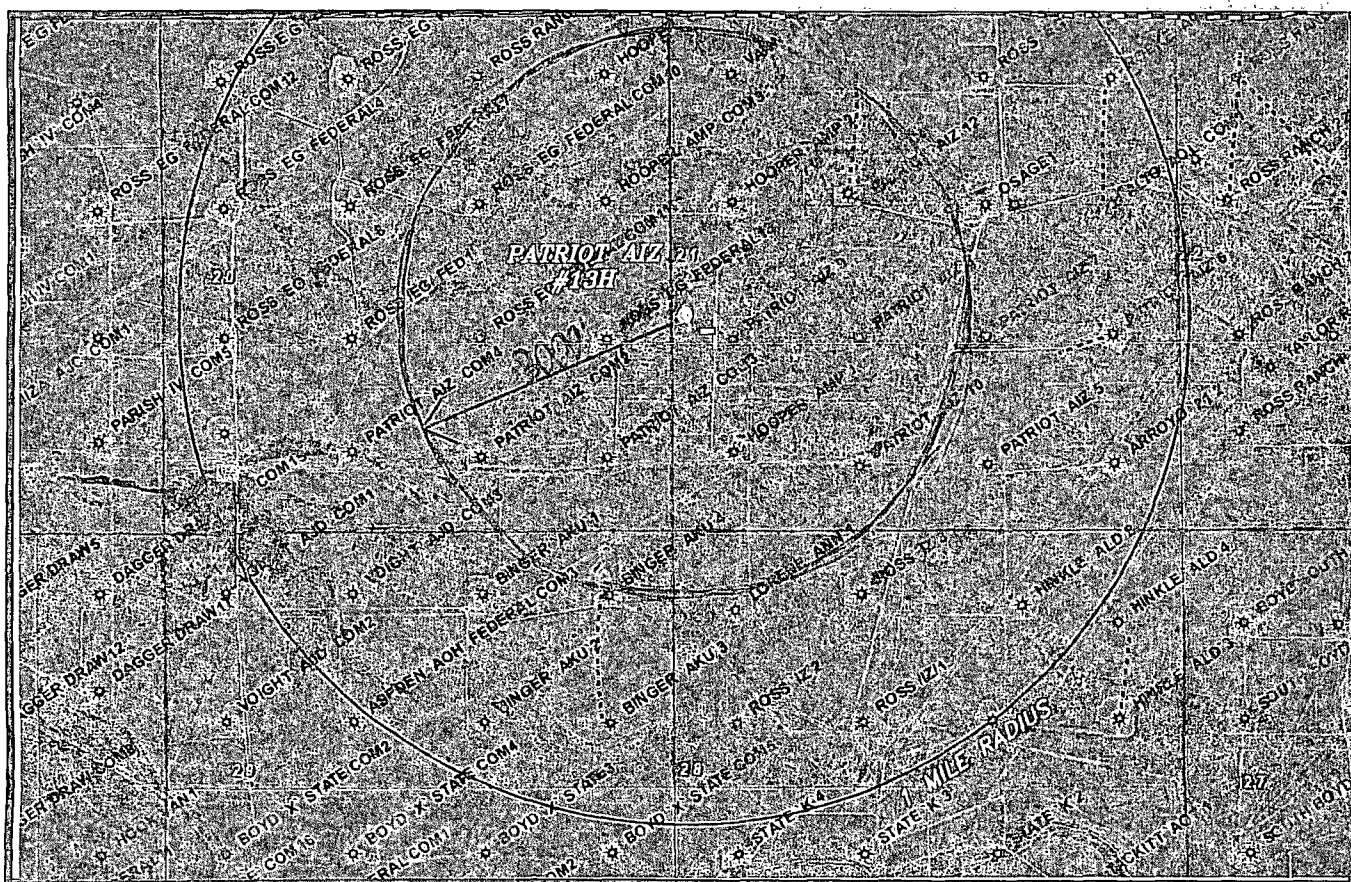
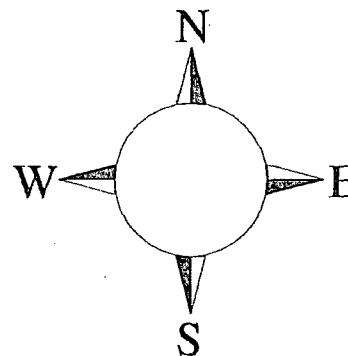
Hydrogen Sulfide (H₂S) Contingency Plan

For

**Patriot AIZ #13H
2210' FSL & 150' FWL
Section 21, T19S-R25E
Eddy County, NM**

Patriot AIZ #13H

This is an open drilling site. H₂S monitoring equipment and emergency response equipment will be used within 500' of zones known to contain H₂S, including warning signs, wind indicators and H₂S monitor.



Assumed 100 ppm ROE = 3000'
100 ppm H₂S concentration shall trigger activation of this plan.

Emergency Procedures

In the case of a release of gas containing H₂S, the first responder(s) must isolate the area and prevent entry by other persons into the 100 ppm ROE. Additionally the first responder(s) must evacuate any public places encompassed by the 100 ppm ROE. First responder(s) must take care not to injure themselves during this operation. Company and/or local officials must be contacted to aid in this operation. Evacuation of the public should be beyond the 100 ppm ROE.

All responders must have training in the detection of H₂S, measures for protection against the gas, equipment used for protection and emergency response. Additionally, responders must be equipped with H₂S monitors and air packs in order to control the release. Use the "buddy system" to ensure no injuries during the response.

Ignition of Gas Source

Should control of the well be considered lost and ignition considered, take care to protect against exposure to Sulfur Dioxide (SO₂). Intentional ignition must be coordinated with the NMOCD and local officials. Additionally the NM State Police may become involved. NM State Police shall be the Incident Command on scene of any major release. Take care to protect downwind whenever there is an ignition of the gas

Characteristics of H₂S and SO₂

Common Name	Chemical Formula	Specific Gravity	Threshold Limit	Hazardous Limit	Lethal Concentration
Hydrogen Sulfide	H ₂ S	1.189 Air = 1	10 ppm	100 ppm/hr	600 ppm
Sulfur Dioxide	SO ₂	2.21 Air = 1	2 ppm	N/A	1000 ppm

Contacting Authorities

YPC personnel must liaison with local and state agencies to ensure a proper response to a major release. Additionally, the OCD must be notified of the release as soon as possible but no later than 4 hours. Agencies will ask for information such as type and volume of release, wind direction, location of release, etc. Be prepared with all information available. The following call list of essential and potential responders has been prepared for use during a release. YPC Company response must be in coordination with the State of New Mexico's 'Hazardous Materials Emergency Response Plan' (HMER)

Yates Petroleum Corporation Phone Numbers

YPC Office	(575) 748-1471
Wade Bennett/Prod Superintendent	(575) 748-4236
LeeRoy Richards/Assistant Prod Superintendent	(575) 748-4228
Mike Larkin/Drilling	(575) 748-4222
Paul Hanes/Prod. Foreman/Roswell	(575) 624-2805
Tim Bussell/Drilling Superintendent	(575) 748-4221
Artesia Answering Service	(575) 748-4302
(During non-office hours)	

Agency Call List

Eddy County (575)

Artesia

State Police	746-2703
City Police.....	746-2703
Sheriff's Office	746-9888
Ambulance	911
Fire Department	746-2701
LEPC (Local Emergency Planning Committee)	746-2122
NMOCD.....	748-1283

Carlsbad

State Police	885-3137
City Police.....	885-2111
Sheriff's Office.....	887-7551
Ambulance	911
Fire Department	885-2111
LEPC (Local Emergency Planning Committee).....	887-3798
US Bureau of Land Management.....	887-6544
New Mexico Emergency Response Commission (Santa Fe)	(505)476-9600
24 HR	(505) 827-9126
New Mexico State Emergency Operations Center.....	(505) 476-9635
National Emergency Response Center (Washington, DC)	...(800) 424-8802

Other

Boots & Coots IWC	1-800-256-9688 or (281) 931-8884
Cudd Pressure Control.....	(915) 699-0139 or (915) 563-3356
Halliburton	(575) 746-2757
B. J. Services.....	(575) 746-3569
Flight For Life -4000 24th St, Lubbock, TX	(806) 743-9911
Aerocare -Rr 3 Box 49f, Lubbock, TX	(806) 747-8923
Med Flight Air Amb 2301 Yale Blvd SE #D3, Albuquerque, NM	(505) 842-4433
S B Air Med Svc 2505 Clark Carr Loop SE, Albuquerque, NM	(505) 842-4949