

District I
1625 N. French Dr., Hobbs, NM 88240
Phone: (575) 393-6161 Fax: (575) 393-0720

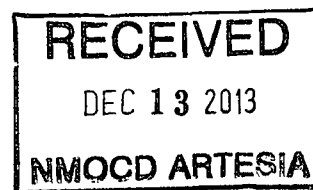
District II
811 S. First St., Artesia, NM 88210
Phone: (575) 748-1283 Fax: (575) 748-9720

District III
1000 Rio Brazos Road, Aztec, NM 87410
Phone: (505) 334-6178 Fax: (505) 334-6170

District IV
1220 S. St. Francis Dr., Santa Fe, NM 87505
Phone: (505) 476-3460 Fax: (505) 476-3462

State of New Mexico
Energy Minerals and Natural Resources
Oil Conservation Division
1220 South St. Francis Dr.
Santa Fe, NM 87505

Form C-101
Revised July 18, 2013



APPLICATION FOR PERMIT TO DRILL, RE-ENTER, DEEPEN, PLUGBACK, OR ADD A ZONE

¹ Operator Name and Address COG Operating LLC 2208 West Main Street Artesia, NM 88210		² OGRID Number 229137
³ Property Code 308208		⁴ API Number 30-015-41865
⁵ Property Name Myox 21 State		⁶ Well No 11H

7. Surface Location

UL - Lot	Section	Township	Range	Lot Idn	Feet from	N/S Line	Feet From	E/W Line	County
N	21	25S	28E	N	190	South	1840	West	Eddy

*** Proposed Bottom Hole Location**

UL - Lot	Section	Township	Range	Lot Idn	Feet from	N/S Line	Feet From	E/W Line	County
C	21	25S	28E	C	330	North	1980	West	Eddy

9. Pool Information

Pool Name	Pool Code
San Lorenzo; Bone Spring.	53600

Additional Well Information

¹¹ Work Type New Well	¹² Well Type Oil	¹³ Cable/Rotary	¹⁴ Lease Type State	¹⁵ Ground Level Elevation 2975.5'
¹⁶ Multiple N	¹⁷ Proposed Depth 10361	¹⁸ Formation Bone Spring	¹⁹ Contractor	²⁰ Spud Date 12/20/2013
Depth to Ground water		Distance from nearest fresh water well		Distance to nearest surface water

☒ We will be using a closed-loop system in lieu of lined pits

21. Proposed Casing and Cement Program

Type	Hole Size	Casing Size	Casing Weight/ft	Setting Depth	Sacks of Cement	Estimated TOC
Surface	17.5	13.375	48	100	250	
Intrmd	12.25	9.625	36	2330	700	
Production	7.875	5.5	17	10361	1000	2080

Casing/Cement Program: Additional Comments

Drill 12-1/4" hole to 2,330' with Brine, and run 9-5/8", 36#, J-55 and cement to surface in 1 stage. Drill 7-7/8" curve and lateral with cut brine to approx. 10,361' MD. Run 5-1/2", 17#, P-110 csg and cement to 2,080' in 1 stage.

22. Proposed Blowout Prevention Program

Type	Working Pressure	Test Pressure	Manufacturer
Double Ram	3000	3000	Cameron

²³ I hereby certify that the information given above is true and complete to the best of my knowledge and belief.

I further certify that I have complied with 19.15.14.9 (A) NMAC ☒ and/or 19.15.14.9 (B) NMAC ☒, if applicable.

Signature: *Mayte Reyes*

Printed name: Mayte Reyes

Title: Regulatory Analyst

E-mail Address: mreyes1@concho.com

Date: 12/12/2013

Phone: 575-748-6945

OIL CONSERVATION DIVISION

Approved By:

T. C. Shepard

Title:

Geologist

Approved Date: 12/13/2013

Expiration Date: 12/15/2015

Conditions of Approval Attached

DISTRICT I
1625 N. FRENCH DR., HOBBS, NM 88240
Phone: (575) 393-8161 Fax: (575) 393-0720

DISTRICT II
811 S. FIRST ST., ARTESIA, NM 88210
Phone: (575) 748-1283 Fax: (575) 748-9720

DISTRICT III
1000 RIO BRAZOS RD., AZTEC, NM 87410
Phone: (505) 334-6178 Fax: (505) 334-6170

DISTRICT IV
1220 S. ST. FRANCIS DR., SANTA FE, NM 87505
Phone: (505) 476-3460 Fax: (505) 476-3482

State of New Mexico
Energy, Minerals & Natural Resources Department

OIL CONSERVATION DIVISION

1220 SOUTH ST. FRANCIS DR.
Santa Fe, New Mexico 87505

Form C-102

Revised August 1, 2011

Submit one copy to appropriate

District Office

DEC 13 2013

☐ AMENDED REPORT

INMOCD ARTESIA

WELL LOCATION AND ACREAGE DEDICATION PLAT

API Number 30-015- 41865	Pool Code 53600	Pool Name San Lorenzo; Bone Spring
Property Code 308208	Property Name MYOX 21 STATE	Well Number 11H
GRID No. 229137	Operator Name COG OPERATING, LLC	Elevation 2975.5

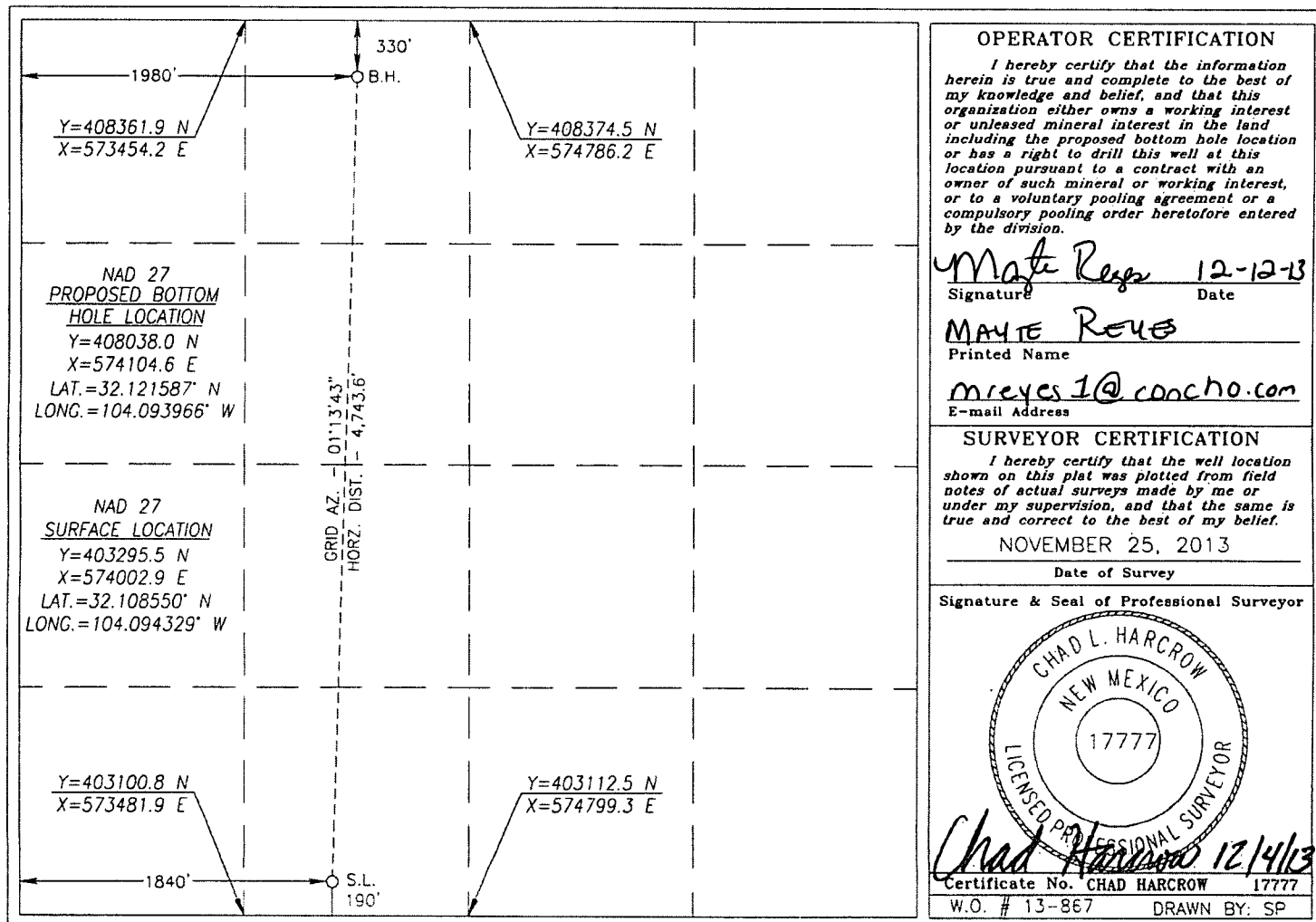
Surface Location

UL or lot No.	Section	Township	Range	Lot Idn	Feet from the	North/South line	Feet from the	East/West line	County
N	21	25-S	28-E		190	SOUTH	1840	WEST	EDDY

Bottom Hole Location If Different From Surface

UL or lot No.	Section	Township	Range	Lot Idn	Feet from the	North/South line	Feet from the	East/West line	County
C	21	25-S	28-E		330	NORTH	1980	WEST	EDDY
Dedicated Acres 160	Joint or Infill	Consolidation Code	Order No.						

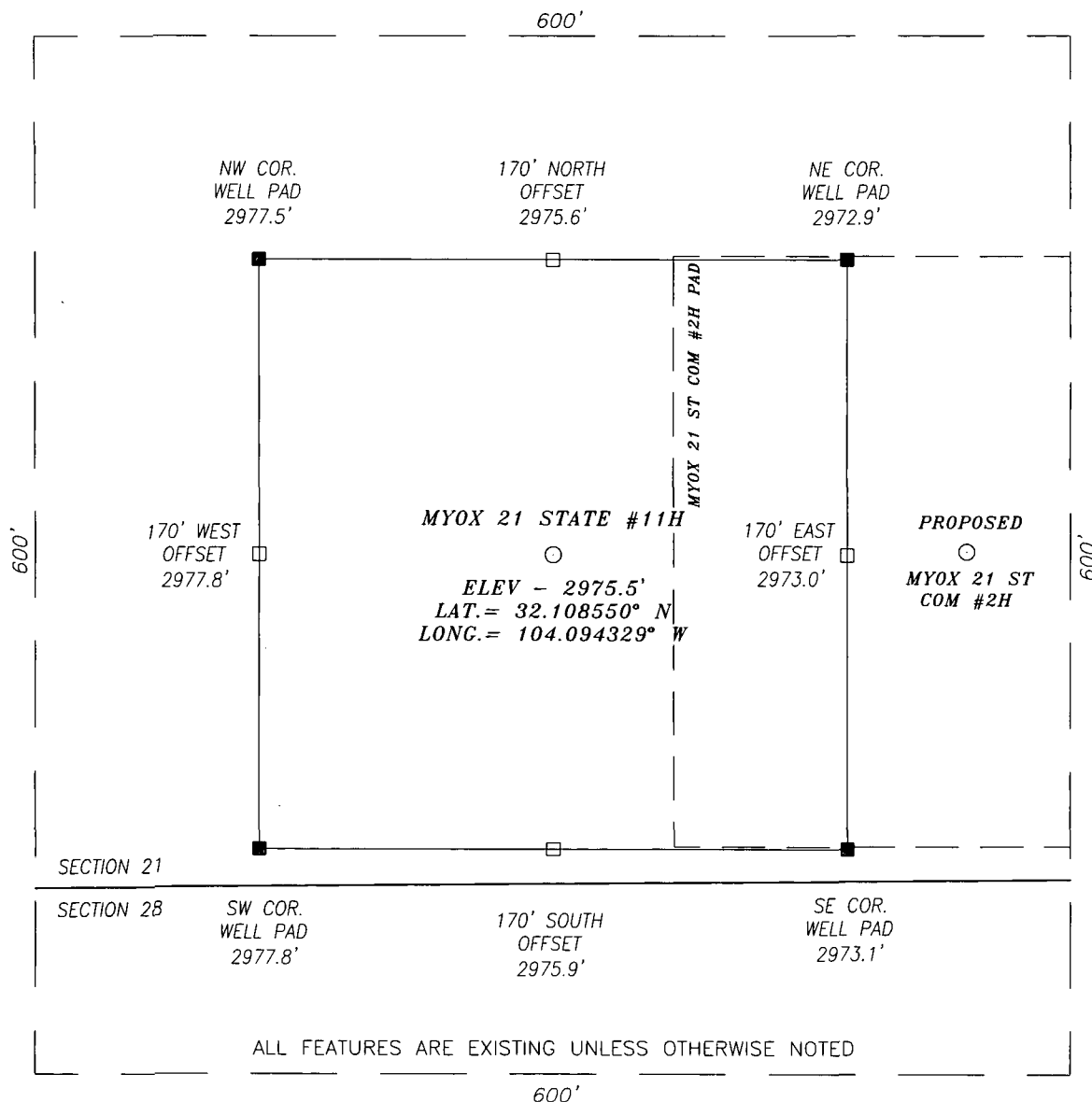
NO ALLOWABLE WILL BE ASSIGNED TO THIS COMPLETION UNTIL ALL INTERESTS HAVE BEEN CONSOLIDATED
OR A NON-STANDARD UNIT HAS BEEN APPROVED BY THE DIVISION



SECTION 21, TOWNSHIP 25 SOUTH, RANGE 28 EAST, N.M.P.M.,

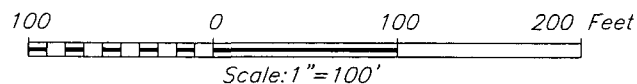
EDDY COUNTY

NEW MEXICO



DIRECTIONS TO LOCATION

HEADING SOUTH ON HWY 285 TURN RIGHT (WEST) APPROX. 0.1 MILE BEFORE MILE MARKER 8 AND GO APPROX. 0.5 MILE; THEN TURN LEFT (SOUTHWEST) AND GO APPROX. 0.3 MILE; THEN TURN RIGHT (NORTHWEST) AND GO APPROX. 0.5 MILE; THEN PROPOSED WELL IS APPROX. 570 FEET SOUTHWEST.



HARCROW SURVEYING, LLC

2314 W. MAIN ST, ARTESIA, N.M. 88210
PH: (575) 513-2570 FAX: (575) 746-2158
chad_harcrow77@yahoo.com



COG OPERATING, LLC

MYOX 21 STATE #11H WELL
LOCATED 190 FEET FROM THE SOUTH LINE
AND 1840 FEET FROM THE WEST LINE OF SECTION 21,
TOWNSHIP 25 SOUTH, RANGE 28 EAST, N.M.P.M.,
EDDY COUNTY, NEW MEXICO

SURVEY DATE: 11/25/2013

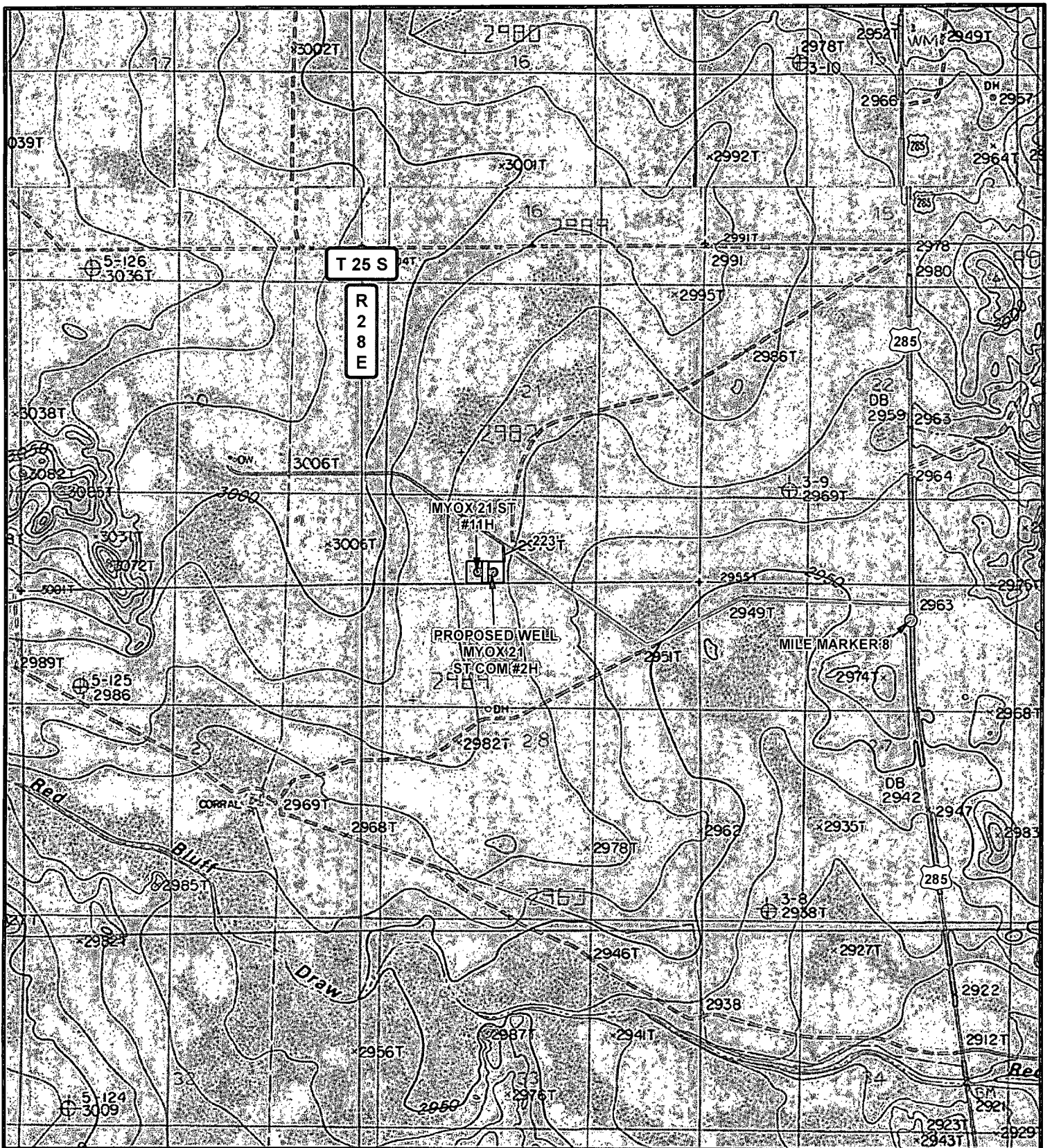
PAGE: 1 OF 1

DRAFTING DATE: 11/26/2013

APPROVED BY: CH

DRAWN BY: SP

FILE: 13-867



LEGEND

- Well
- Well Pad
- Main Road
- Proposed Road


MYOX 21 ST #11H			
SEC: 21	TWP: 25 S.	RGE: 28 E.	ELEVATION: 2975.5'
STATE: NEW MEXICO		COUNTY: EDDY	190' FSL, 1840' FWL
W.O. # 13-867		LEASE: MYOX 21 ST.	SURVEY: N.M.P.M

0 2,500 5,000 FEET

0 0.125 0.25 0.5 Miles

1 IN = 2,000 FT

LOCATION MAP
TOPO
11/26/2013
S.P.



CONCHO


COG OPERATING, LLC

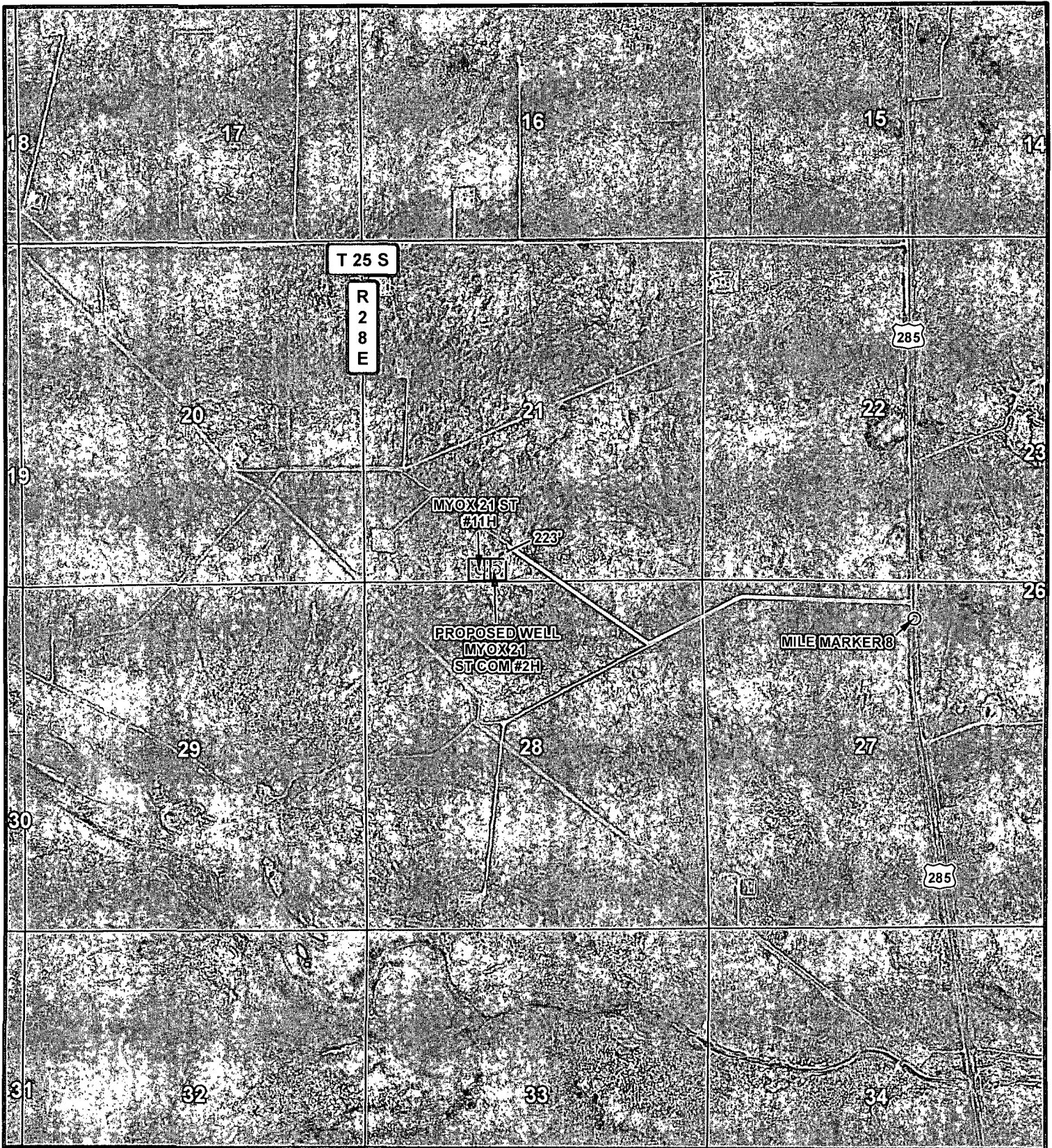
HARCROW SURVEYING, LLC

1107 WATSON, ARTESIA N.M. 88210

PH: (575) 313-2570 FAX: (575) 746-2158

chad_harcrow77@yahoo.com





LEGEND

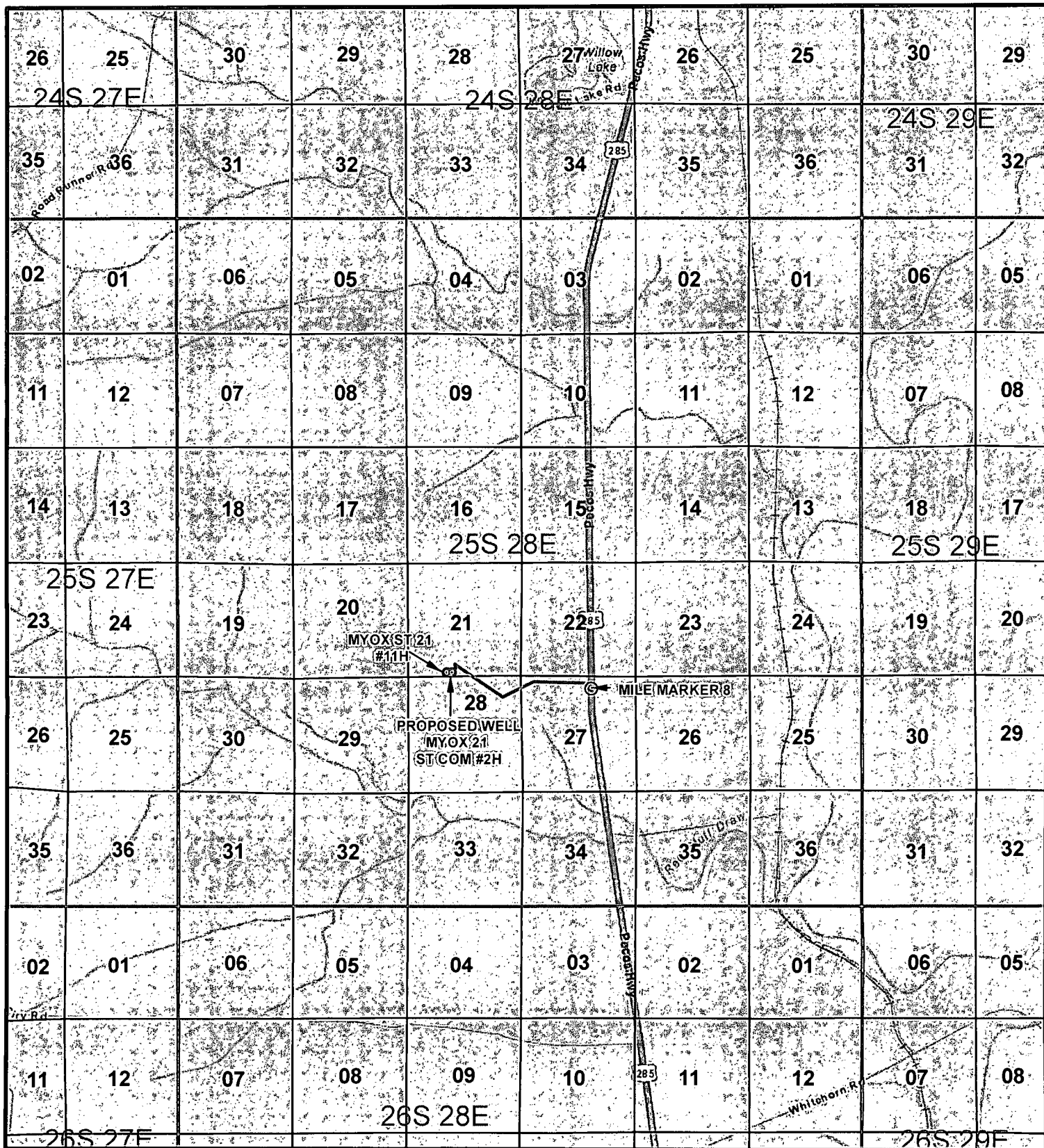
- Well
- Well Pad
- Main Road
- Proposed Road

MYOX 21 ST #11H			
SEC: 21	TWP: 25 S.	RGE: 28 E.	ELEVATION: 2975.5'
STATE: NEW MEXICO		COUNTY: EDDY	190' FSL, 1840' FWL
W.O. # 13-867		LEASE: MYOX 21 ST.	SURVEY: N.M.P.M
<div>0 2,500 5,000 FEET</div> <div>0 0.125 0.25 0.5 Miles</div> <div>1 IN = 2,000 FT</div>			
LOCATION MAP		IMAGERY	11/26/2013 S.P.

CONCHO
COG OPERATING, LLC

N

HARCROW SURVEYING, LLC
1107 WATSON, ARTESIA N.M. 88210
PH: (575) 513-2570 FAX: (575) 746-2158
chad_harcrow77@yahoo.com

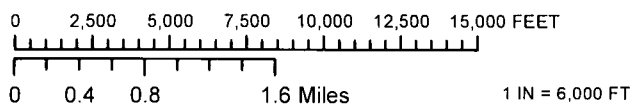


LEGEND

- Well
- Main Road
- Proposed Road

MYOX 21 ST #11H

SEC: 21 TWP: 25 S. RGE: 28 E. ELEVATION: 2975.5'
 STATE: NEW MEXICO COUNTY: EDDY 190' FSL, 1840' FWL
 W.O. # 13-867 LEASE: MYOX 21 ST. SURVEY: N.M.P.M



VICINITY MAP 11/26/2013 S.P.

CONCHO
 COG OPERATING, LLC

HARCROW SURVEYING, LLC
 1107 WATSON, ARTESIA N.M. 88210
 PH: (575) 313-2570 FAX: (575) 746-2158
 chad_harcrow77@yahoo.com



Myox 21 State 11H

	Hole Size	Casing	Wt	Depth	Cmt	TOC
Surface	26	20	45	100'	250	0
Intrmd	12.25	9.625	36	2,330'	700	0
Prod	7.875	5.5	17	10,361	1000	2,080'

Drill 12-1/4" hole to 2,330' with Brine, and run 9-5/8", 36#, J-55 and cement to surface in 1 stage. Drill 7-7/8" curve and lateral with cut brine to approx. 10,361' MD. Run 5-1/2", 17#, P-110 csg and cement to 2,080' in 1 stage.

Well Control

Type	Pressure	Test	Manufacture
Double Ram	3000	3000	Cameron

Permit Conditions of Approval

API: 30-0/5-41865
Myox 21 State #11H

OCD Reviewer	Condition
CSHAPARD	Once the well is spud, to prevent ground water contamination through whole or partial conduits from the surface, the operator shall drill without interruption through the fresh water zone or zones and shall immediately set in cement the water protection string