

DISTRICT I
1825 N. FRENCH DR., HOBBS, NM 88240
Phone: (505) 393-6181 Fax: (505) 393-0720

DISTRICT II
1501 W. GRAND AVENUE, ARTESIA, NM 88210
Phone: (505) 748-1253 Fax: (505) 748-0720

DISTRICT III
1000 RIO BRAZOS RD., AZTEC, NM 87410
Phone: (505) 334-6178 Fax: (505) 334-6170

DISTRICT IV
11550 S. ST. FRANCIS DR., SANTA FE, NM 87505
Phone: (505) 476-3460 Fax: (505) 476-3462

State of New Mexico
Energy, Minerals & Natural Resources Department
OIL CONSERVATION DIVISION
11885 SOUTH ST. FRANCIS DR.
Santa Fe, New Mexico 87505

Form C-102
Revised August 1, 2011
Submit one copy to appropriate

AMENDED REPORT

(property)

WELL LOCATION AND ACREAGE DEDICATION PLAT

API Number 30-015-41297	Pool Code 30216	Pool Name HAY HOLLOW, BONE SPRING, NORTH
Property Code 40316	Property Name MYOX 20 FEE	Well Number 2H
OGRID No. 229137	Operator Name COG OPERATING, LLC	Elevation 3033.0

Surface Location

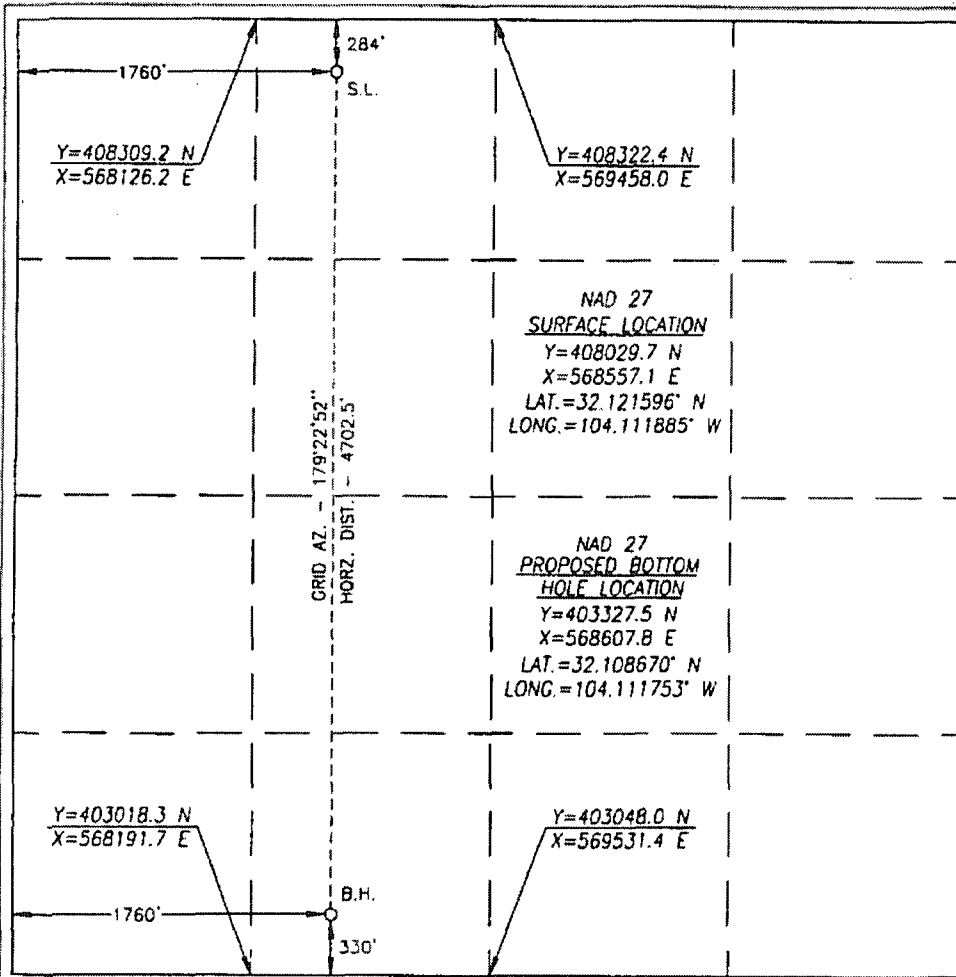
UL or lot No.	Section	Township	Range	Lot Idn	Feet from the	North/South line	Feet from the	East/West line	County
C	20	25-S	28-E		284	NORTH	1760	WEST	EDDY

Bottom Hole Location If Different From Surface

UL or lot No.	Section	Township	Range	Lot Idn	Feet from the	North/South line	Feet from the	East/West line	County
N	20	25-S	28-E		330	SOUTH	1760	WEST	EDDY

Dedicated Acres	Joint or Infill	Consolidation Code	Order No.
160.0			

NO ALLOWABLE WILL BE ASSIGNED TO THIS COMPLETION UNTIL ALL INTERESTS HAVE BEEN CONSOLIDATED
OR A NON-STANDARD UNIT HAS BEEN APPROVED BY THE DIVISION



OPERATOR CERTIFICATION

I hereby certify that the information herein is true and complete to the best of my knowledge and belief, and that this organization either owns a working interest or unleased mineral interest in the land including the proposed bottom hole location or has a right to drill this well at this location pursuant to a contract with an owner of such mineral or working interest, or to a voluntary pooling agreement or a compulsory pooling order heretofore entered by the division.

Melanie J. Parker 11/7/2014
Signature Date

Melanie J. Parker

Printed Name

mparker@concho.com

E-mail Address

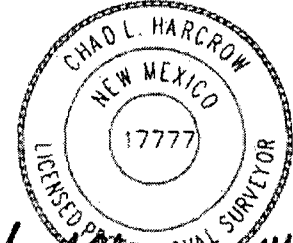
SURVEYOR CERTIFICATION

I hereby certify that the well location shown on this plat was plotted from field notes of actual surveys made by me or under my supervision, and that the same is true and correct to the best of my belief.

APRIL 1, 2013

Date of Survey

Signature & Seal of Professional Surveyor



Chad L. Harcrow 4/5/13
Certificate No. CHAD HARCROW 17777
W.O. # 13-152 DRAWN BY: VD