

N.M. OIL CONSERVATION DIVISION

Form 3160-3  
(March 2012)

811 S. FIRST STREET  
ARTESIA, NM 88210

FORM APPROVED  
OMB No. 1004-0137  
Expires October 31, 2014

UNITED STATES  
DEPARTMENT OF THE INTERIOR  
BUREAU OF LAND MANAGEMENT

APPLICATION FOR PERMIT TO DRILL OR REENTER

1a. Type of work: <input checked="" type="checkbox"/> DRILL <input type="checkbox"/> REENTER		5. Lease Serial No. NMNM-0560397
1b. Type of Well: <input checked="" type="checkbox"/> Oil Well <input type="checkbox"/> Gas Well <input type="checkbox"/> Other <input checked="" type="checkbox"/> Single Zone <input type="checkbox"/> Multiple Zone		6. If Indian, Allottee or Tribe Name TCS 6-10-14
2. Name of Operator Mack Energy Corporation		7. If Unit or CA Agreement, Name and No.
3a. Address PO Box 960 Artesia, NM 88211-0960		8. Lease Name and Well No. Whitehorse Federal #5 <37616>
3b. Phone No. (include area code) (575)748-1288		9. API Well No. 30-005-64204
4. Location of Well (Report location clearly and in accordance with any State requirements. *) At surface 2310 FNL & 990 FEL At proposed prod. zone		10. Field and Pool, or Exploratory Round Tank; San Andres <52770>
14. Distance in miles and direction from nearest town or post office* 12 miles northwest of Loco Hills, NM		11. Sec., T. R. M. or Blk. and Survey or Area Sec. 30 T15S R29E
15. Distance from proposed* location to nearest property or lease line, ft. (Also to nearest drlg. unit line, if any) 330'	16. No. of acres in lease 400	12. County or Parish Chaves
17. Spacing Unit dedicated to this well 40	13. State NM	
18. Distance from proposed location* to nearest well, drilling, completed, applied for, on this lease, ft. 1320'	19. Proposed Depth 3500'	20. BLM/BIA Bond No. on file NMB000286
21. Elevations (Show whether DF, KDB, RT, GL, etc.) 3801' GR	22. Approximate date work will start 3/30/2014	23. Estimated duration 7 days

24. Attachments

The following, completed in accordance with the requirements of Onshore Oil and Gas Order No. 1, must be attached to this form:

- Well plat certified by a registered surveyor.
- A Drilling Plan.
- A Surface Use Plan (if the location is on National Forest System Lands, the SUPO must be filed with the appropriate Forest Service Office).
- Bond to cover the operations unless covered by an existing bond on file (see Item 20 above).
- Operator certification
- Such other site specific information and/or plans as may be required by the BLM.

25. Signature <i>Jerry W. Sherrell</i>	Name (Printed/Typed) Jerry W. Sherrell	Date 2-25-2014
Title Production Clerk		
Approved by (Signature) <i>ISI Angel Mayes</i>	Name (Printed/Typed) Angel Mayes	Date 6-4-14
Title Assistant Field Manager, Lands And Minerals	Office ROSWELL FIELD OFFICE	

Application approval does not warrant or certify that the applicant holds legal or equitable title to those rights in the subject lease which would entitle the applicant to conduct operations thereon.  
Conditions of approval, if any, are attached.

APPROVED FOR 2 YEARS

Title 18 U.S.C. Section 1001 and Title 43 U.S.C. Section 1212, make it a crime for any person knowingly and willfully to make to any department or agency of the United States any false, fictitious or fraudulent statements or representations as to any matter within its jurisdiction.

(Continued on page 2)

\*(Instructions on page 2)

ROSWELL CONTROLLED WATER BASIN

NM OIL CONSERVATION  
ARTESIA DISTRICT

JUN 09 2014

DECLARED WATER BASIN  
CEMENT BEHIND THE 85" SURFACE  
CASING MUST BE CIRCULATED  
WITNESS

RECEIVED  
APPROVAL SUBJECT TO  
GENERAL REQUIREMENTS AND  
SPECIAL STIPULATIONS ATTACHED

District I  
1625 N. French Dr., Hobbs, NM 88240  
Phone: (575) 393-6161 Fax: (575) 393-0720  
District II  
311 S. First St., Artesia, NM 88210  
Phone: (575) 748-1283 Fax: (575) 748-9720  
District III  
1000 Rio Brazos Road, Aztec, NM 87410  
Phone: (505) 334-6178 Fax: (505) 334-6170  
District IV  
1220 S. St. Francis Dr., Santa Fe, NM 87505  
Phone: (505) 476-3460 Fax: (505) 476-3462

State of New Mexico  
Energy, Minerals & Natural Resources Department  
OIL CONSERVATION DIVISION  
1220 South St. Francis Dr.  
Santa Fe, NM 87505

Form C-102  
Revised August 1, 2011  
Submit one copy to appropriate  
District Office  
☐ AMENDED REPORT

WELL LOCATION AND ACREAGE DEDICATION PLAT

<sup>1</sup> API Number <b>30-005-64204</b>	<sup>2</sup> Pool Code <b>52770</b>	<sup>3</sup> Pool Name <b>Round Tank; San Andres</b>
<sup>4</sup> Property Code <b>37616</b>	<sup>5</sup> Property Name <b>WHITEHORSE FEDERAL</b>	<sup>6</sup> Well Number <b>5</b>
<sup>7</sup> OGRID No. <b>13837</b>	<sup>8</sup> Operator Name <b>MACK ENERGY CORPORATION</b>	<sup>9</sup> Elevation <b>3800.6</b>

<sup>10</sup> Surface Location

UL or lot no.	Section	Township	Range	Lot Idn	Feet from the	North/South line	Feet from the	East/West line	County
H	30	15 S	29 E		2310	NORTH	990	EAST	CHAVES

<sup>11</sup> Bottom Hole Location If Different From Surface

UL or lot no.	Section	Township	Range	Lot Idn	Feet from the	North/South line	Feet from the	East/West line	County
<sup>12</sup> Dedicated Acres <b>40</b>	<sup>13</sup> Joint or Infill	<sup>14</sup> Consolidation Code	<sup>15</sup> Order No.						

No allowable will be assigned to this completion until all interests have been consolidated or a non-standard unit has been approved by the division.

N89°36'13"E 2677.67 FT		N89°36'13"E 2677.67 FT	
NW CORNER SEC. 30 LAT. = 32.9940008°N LONG. = 104.0761714°W NMSP EAST (FT) N = 725426.53 E = 578846.98	DNF	NE CORNER SEC. 30 LAT. = 32.9940653°N LONG. = 104.0587097°W NMSP EAST (FT) N = 725463.54 E = 584200.79	
10" 1			
10" 2	WHITEHORSE FEDERAL #5 ELEV. = 3800.6 LAT. = 32.9877056°N (NAD27) LONG. = 104.0619443°W NMSP EAST (FT) N = 723147.20 E = 583215.01	2310'	
W/4 CORNER SEC. 30 LAT. = 32.9888592°N LONG. = 104.0760686°W NMSP EAST (FT) N = 722828.40 E = 578884.86	NOTE: LATITUDE AND LONGITUDE COORDINATES ARE SHOWN USING THE NORTH AMERICAN DATUM OF 1927 (NAD27), AND ARE IN DECIMAL DEGREE FORMAT.	SURFACE LOCATION	E/4 CORNER SEC. 30 LAT. = 32.9888118°N LONG. = 104.0587171°W NMSP EAST (FT) N = 722824.59 E = 584205.40
10" 3		990'	
10" 4			
SW CORNER SEC. 30 LAT. = 32.9796170°N LONG. = 104.0761852°W NMSP EAST (FT) N = 720193.49 E = 578855.54	S/4 CORNER SEC. 30 LAT. = 32.9796251°N LONG. = 104.0675402°W NMSP EAST (FT) N = 720203.02 E = 581506.57		SE CORNER SEC. 30 LAT. = 32.9796288°N LONG. = 104.0589414°W NMSP EAST (FT) N = 720211.12 E = 584143.43
S89°47'37"W 2651.74 FT		S89°49'25"W 2637.55 FT	

**<sup>17</sup> OPERATOR CERTIFICATION**  
I hereby certify that the information contained herein is true and complete to the best of my knowledge and belief, and that this organization either owns a working interest or unleased mineral interest in the land including the proposed bottom hole location or has a right to drill this well at this location pursuant to a contract with an owner of such a mineral or working interest, or to a voluntary pooling agreement or a compulsory pooling order heretofore entered by the division.

*Jerry W. Sherrell* 2.24.2014  
Signature Date

Jerry W. Sherrell  
Printed Name

jerry5@mec.com  
E-mail Address

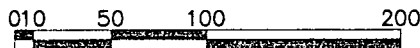
**<sup>18</sup> SURVEYOR CERTIFICATION**  
I hereby certify that the well location shown on this plat was plotted from field notes of actual surveys made by me or under my supervision, and that the same is true and correct to the best of my belief.

AUGUST 8, 2013  
Date of Survey

*[Signature]*  
Signature and Seal of Professional Surveyor

Certificate Number: FILIMON F. JARAMILLO, PLS 12797  
SURVEY NO. 2079

NOTE: THE LATITUDE AND LONGITUDE COORDINATES ARE SHOWN USING THE NORTH AMERICAN DATUM OF 1927 (NAD27), AND ARE IN DECIMAL DEGREE FORMAT. /



SCALE 1" = 100'

### DIRECTIONS TO LOCATION

FROM THE INTERSECTION OF STATE HIGHWAY 249 AND CR 30 (JEMINA) GO NORTHWEST ON STATE HIGHWAY 249 FOR APPROX. 2.1 MILES. GO SOUTH ON CALICHE LEASE ROAD FOR APPROX. 4.4 MILES. GO SOUTHEAST APPROX. 0.5 OF A MILE. GO SOUTHWEST APPROX. 1.2 MILES. GO SOUTHEAST APPROX. 0.75 OF A MILE. GO NORTHEAST APPROX. 0.12 OF A MILE. LOCATION IS APPROX. 30' WEST.

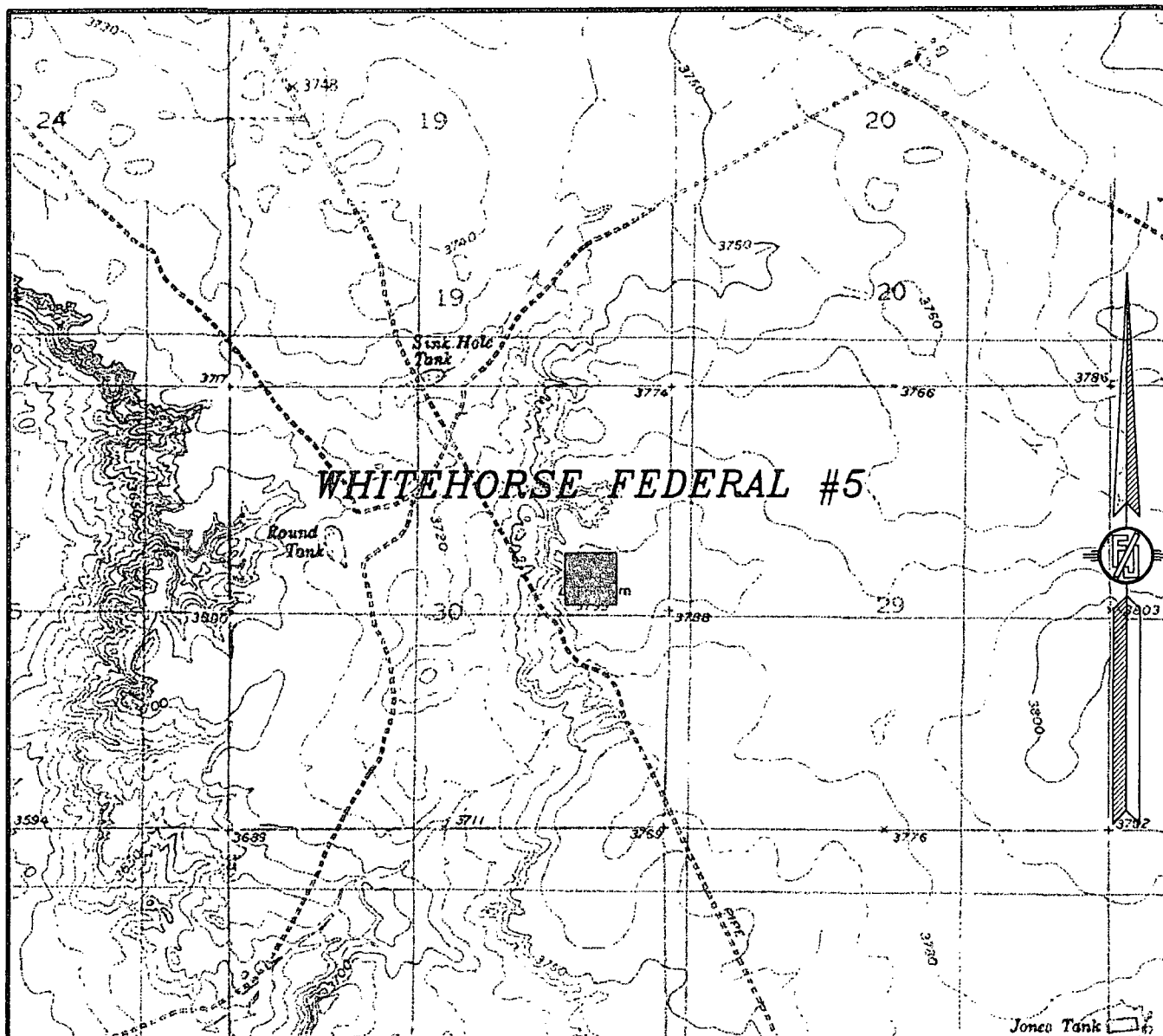
*AUGUST 8, 2013*

*SURVEY NO. 2079*

MADRON SURVEYING, INC. 301 SOUTH CANAL (575) 234-3341 CARLSBAD, NEW MEXICO

301 SOUTH CANAL  
(575) 234-3341

SECTION 30, TOWNSHIP 15 SOUTH, RANGE 29 EAST, N.M.P.M.  
CHAVES COUNTY, STATE OF NEW MEXICO  
LOCATION VERIFICATION MAP



USGS QUAD MAP:  
BASIN WELL

NOT TO SCALE

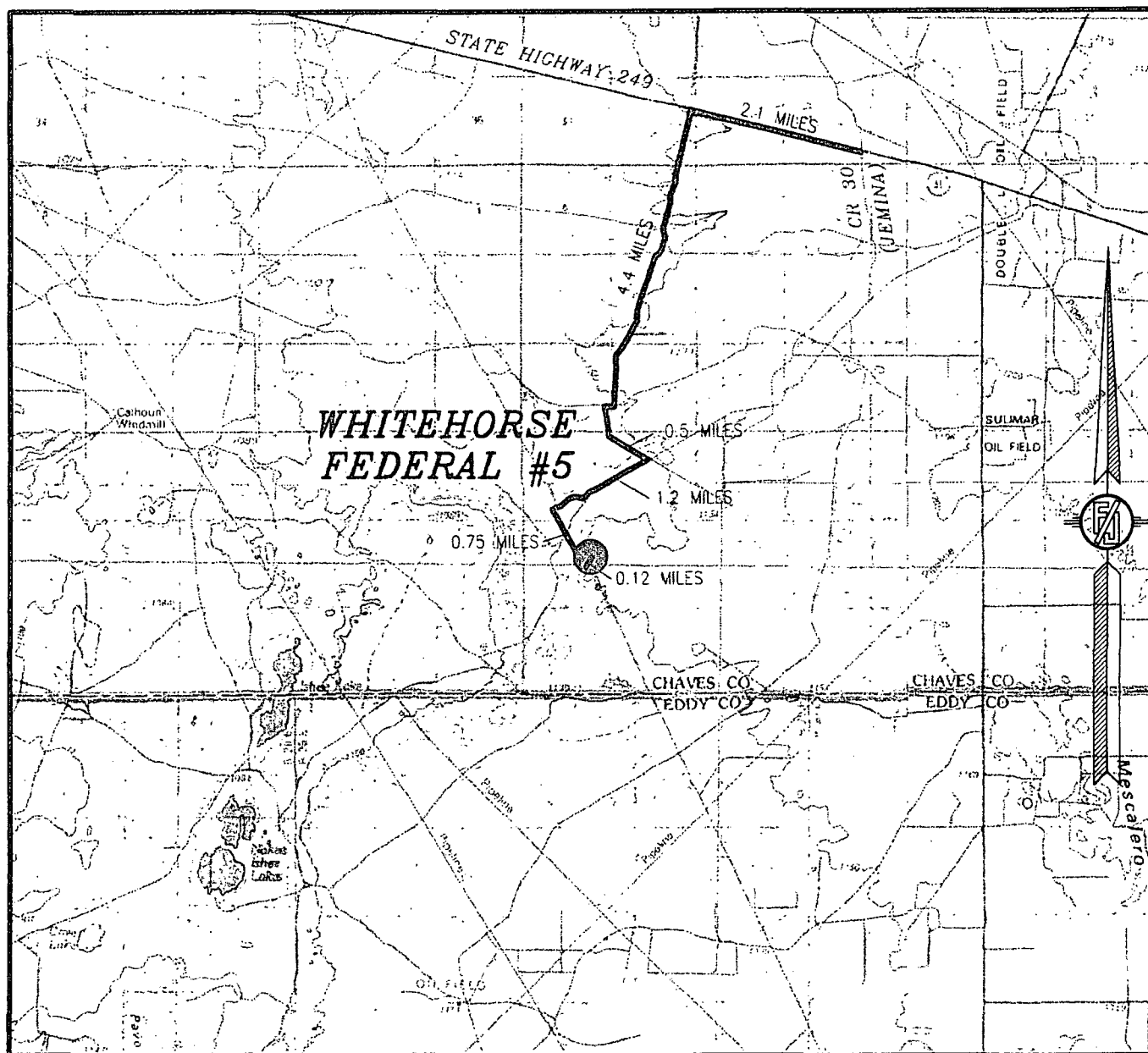
**MACK ENERGY CORPORATION**  
**WHITEHORSE FEDERAL #5**  
LOCATED 2310 FT. FROM THE NORTH LINE  
AND 990 FT. FROM THE EAST LINE OF  
SECTION 30, TOWNSHIP 15 SOUTH,  
RANGE 29 EAST, N.M.P.M.  
CHAVES COUNTY, STATE OF NEW MEXICO

AUGUST 8, 2013

MADRON SURVEYING, INC. 301 SOUTH CANAL (575) 234-3341 CARLSBAD, NEW MEXICO

SURVEY NO. 2079

SECTION 30, TOWNSHIP 15 SOUTH, RANGE 29 EAST, N.M.P.M.  
CHAVES COUNTY, STATE OF NEW MEXICO  
VICINITY MAP



NOT TO SCALE

**MACK ENERGY CORPORATION**  
**WHITEHORSE FEDERAL #5**  
LOCATED 2310 FT. FROM THE NORTH LINE  
AND 990 FT. FROM THE EAST LINE OF  
SECTION 30, TOWNSHIP 15 SOUTH,  
RANGE 29 EAST, N.M.P.M.  
CHAVES COUNTY, STATE OF NEW MEXICO

**DIRECTIONS TO LOCATION**

FROM THE INTERSECTION OF STATE HIGHWAY 249 AND CR 30 (JEMINA) GO NORTHWEST ON STATE HIGHWAY 249 FOR APPROX. 2.1 MILES. GO SOUTH ON CALICHE LEASE ROAD FOR APPROX. 4.4 MILES. GO SOUTHEAST APPROX. 0.5 OF A MILE. GO SOUTHWEST APPROX. 1.2 MILES. GO SOUTHEAST APPROX. 0.75 OF A MILE. GO NORTHEAST APPROX. 0.12 OF A MILE. LOCATION IS APPROX. 30' WEST.

AUGUST 8, 2013

MADRON SURVEYING, INC. 301 SOUTH CANAL (575) 234-3341

SURVEY NO. 2079  
CARLSBAD, NEW MEXICO

SECTION 30, TOWNSHIP 15 SOUTH, RANGE 29 EAST, N.M.P.M.  
CHAVES COUNTY, STATE OF NEW MEXICO  
AERIAL PHOTO



NOT TO SCALE  
AERIAL PHOTO:  
GOOGLE EARTH  
MARCH 2010

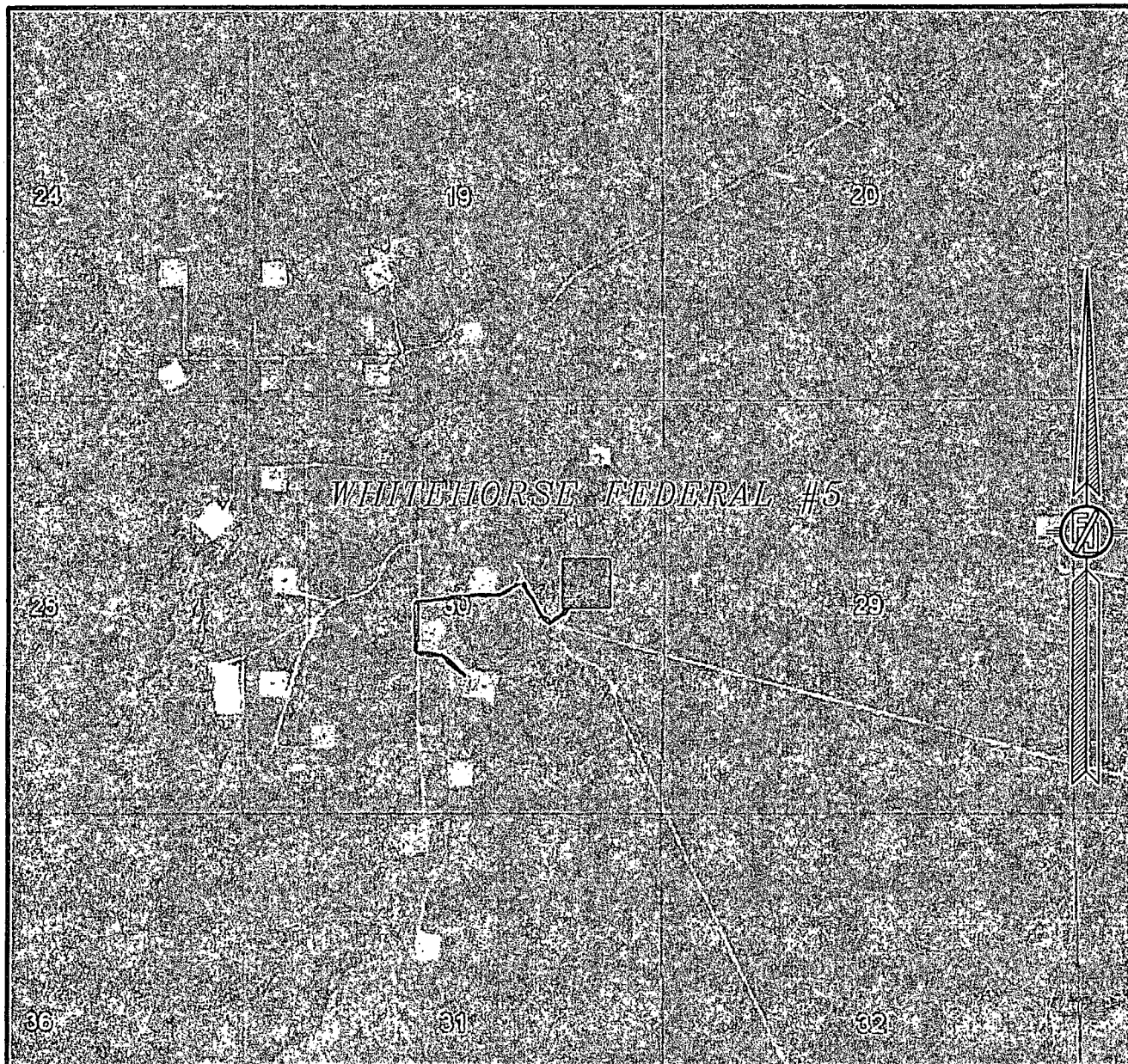
**MACK ENERGY CORPORATION**  
**WHITEHORSE FEDERAL #5**  
LOCATED 2310 FT. FROM THE NORTH LINE  
AND 990 FT. FROM THE EAST LINE OF  
SECTION 30, TOWNSHIP 15 SOUTH,  
RANGE 29 EAST, N.M.P.M.  
CHAVES COUNTY, STATE OF NEW MEXICO

AUGUST 8, 2013

SURVEY NO. 2079

MADRON SURVEYING, INC. 301 SOUTH CANAL (575) 234-3341 CARLSBAD, NEW MEXICO

SECTION 30, TOWNSHIP 15 SOUTH, RANGE 29 EAST, N.M.P.M.  
CHAVES COUNTY, STATE OF NEW MEXICO  
AERIAL PHOTO



NOT TO SCALE  
AERIAL PHOTO:  
GOOGLE EARTH  
MARCH 2010

MACK ENERGY CORPORATION  
**WHITEHORSE FEDERAL #5** Flowline 3675'  
LOCATED 2310 FT. FROM THE NORTH LINE  
AND 990 FT. FROM THE EAST LINE OF .0210 acres  
SECTION 30, TOWNSHIP 15 SOUTH,  
RANGE 29 EAST, N.M.P.M.  
CHAVES COUNTY, STATE OF NEW MEXICO

AUGUST 8, 2013

SURVEY NO. 2079

MADRON SURVEYING, INC. 301 SOUTH CANAL (575) 234-3341 CARLSBAD, NEW MEXICO

## DRILLING PROGRAM

### 1. Geologic Name of Surface Formation

Quaternary

### 2. Estimated Tops of Important Geologic Markers:

Quaternary	760'	Grayburg	1900'
Yates	770'	San Andres	2200'
Queen	1500'		

### 3. Estimated Depths of Anticipated Fresh Water, Oil and Gas:

Water Sand	150'	Fresh Water
Yates	770'	Oil/Gas
Queen	1500'	Oil/Gas
San Andres	2200'	Oil/Gas

No other formations are expected to give up oil, gas or fresh water in measurable quantities. Setting 8 5/8" casing to 450' and circulating cement back to surface will protect the surface fresh water sand. Salt section and shallower zones above TD, which contain commercial quantities of oil and/or gas, will have cement circulated across them by cementing 5 1/2" production casing, sufficient cement will be pumped to circulate back to surface.

### 4. Casing Program:

Hole Size	Interval	OD Casing	Wt, Grade, Jt, cond, collapse/burst/tension
<i>Set surface casing @ approx. 450' - 500'</i>			
12 1/4"	0-450'	8 5/8"	32#, J-55, ST&C, New, 12.572/7.377/7.860
7 7/8"	0-3500	5 1/2"	17#, L-80, LT&C, New, 2.698/1.817/1.773

### 5. Cement Program:

8 5/8" Surfac Casing: 450sx, Class C + 1% PF1, yield 1.33, wt 14.8 ppg, excess 100%  
5 1/2" Production Casing: Lead 225sx 35/65 Poz C + 5% PF44 + 6% PF20 + .25#/sx PF46 + .125#/sx PF29 + 3% PF46, yield 2.47, wt 11.9 ppg, excess 35%, Tail 200sx PVL + 1.3% PF44, 5% PF174 + 5% PF606 + .1% PF153 + .2% PF13, yield 1.47, wt 13.0 ppg, 35% excess.

### 6. Minimum Specifications for Pressure Control:

The blowout preventer equipment (BOP) shown in Exhibit #10 will consist of a double ram-type (3000 psi WP) minimum preventer. This unit will be hydraulically operated and the ram type preventer will be equipped with blind rams on top of 4 1/2" drill pipe rams on bottom. The 11" BOP will be nipped up on the 8 5/8" surface casing and tested by a 3<sup>rd</sup> party to 2000 psi used continuously until TD is reached. All BOP's and accessory equipment will be tested to 2000 psi before drilling out of intermediate casing. Pipe rams will be operationally checked each 24-hour period. Blind rams will be operationally

checked on each trip out of the hole. These checks will be noted on the daily tour sheets. Other accessories to the BOP equipment (Exhibit #10) will include a Kelly cock and floor safety valve and choke lines and choke manifold (Exhibit #11) with a minimum 3000 psi WP rating

**7. Types and Characteristics of the Proposed Mud System:**

The well will be drilled to TD with a combination of brine and cut brine mud system. The applicable depths and properties of this system are as follows:

DEPTH	TYPE	WEIGHT	VISCOSITY	WATERLOSS
0-450'	Fresh Water	8.5	28	N.C.
450'-TD'	Brine	9.1	29	N.C.

Sufficient mud materials to maintain mud properties and meet minimum lost circulation and weight increase requirements will be kept at the well site at all times.

**8. Auxiliary Well Control and Monitoring Equipment:**

- A. Kelly cock will be kept in the drill string at all times.
- B. A full opening drill pipe-stabbing valve with proper drill pipe connections will be on the rig floor at all times.

**9. Logging, Testing and Coring Program:**

- A. The electric logging program will consist of GR-Dual Laterolog, Spectral Density, Dual Spaced Neutron, CSNG Log from T.D. to 8 5/8 casing shoe.
- B. Drill Stem test is not anticipated.
- C. No conventional coring is anticipated.
- D. Further testing procedures will be determined at TD.

**10. Abnormal Conditions, Pressures, Temperatures and Potential Hazards:**

No abnormal pressures or temperatures are anticipated. The estimated bottom hole at TD is 120 degrees and estimated maximum bottom hole pressure is 1,515 psig. Low levels of Hydrogen sulfide have been monitors in producing wells in the area, so H2S may be present while drilling of the well; a plan is attached to the Drilling program. No major loss of circulation zones has been reported in offsetting wells.

**11. Anticipated Starting Date and Duration of Operations:**

Road and location work will not begin until approval has been received from the BLM. The anticipated spud date is March 30, 2014. Once commenced, the drilling operation should be finished in approximately 7 days. If the well is productive, an additional 30 days will be required for completion and testing before a decision is made to install permanent facilities.

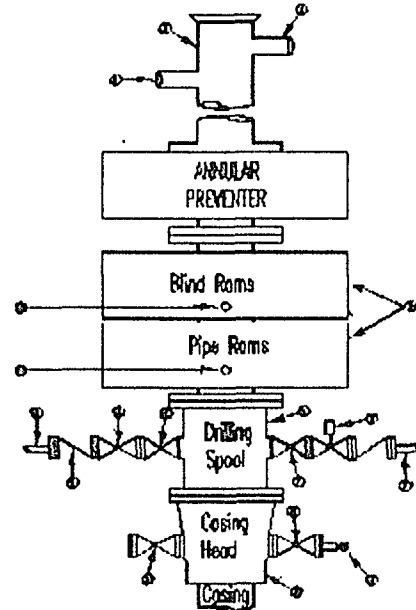
**Attachment to Exhibit #10**  
**NOTES REGARDING THE BLOWOUT PREVENTERS**  
**Whitehorse Federal #5**  
**Chaves County, New Mexico**

1. Drilling nipple to be so constructed that it can be removed without use of a welder through rotary table opening, with minimum I.D. equal to preventer bore.
2. Wear ring to be properly installed in head.
3. Blow out preventer and all fittings must be in good condition, 2000 psi WP minimum.
4. All fittings to be flanged.
5. Safety valve must be available on rig floor at all times with proper connections, valve to be full 2000 psi WP minimum.
6. All choke and fill lines to be securely anchored especially ends of choke lines.
7. Equipment through which bit must pass shall be at least as large as the diameter of the casing being drilled through.
8. Kelly cock on Kelly.
9. Extension wrenches and hands wheels to be properly installed.
10. Blow out preventer control to be located as close to driller's position as feasible.
11. Blow out preventer closing equipment to include minimum 40-gallon accumulator, two independent sources of pump power on each closing unit installation all API specifications.

**Mack Energy Corporation**  
**Minimum Blowout Preventer Requirements**  
 3000 psi Working Pressure  
 13 3/8 inch- 3 MWP  
 11 Inch - 3 MWP  
 EXHIBIT #10

**Stack Requirements**

NO.	Items	Min. I.D.	Min. Nominal
1	Flowline		2"
2	Fill up line		2"
3	Drilling nipple		
4	Annular preventer		
5	Two single or one dual hydraulically operated rams		
6a	Drilling spool with 2" min. kill line and 3" min choke line outlets		2" Choke
6b	2" min. kill line and 3" min. choke line outlets in ram. (Alternate to 6a above)		
7	Valve Gate Plug	3 1/8	
8	Gate valve-power operated	3 1/8	
9	Line to choke manifold		3"
10	Valve Gate Plug	2 1/16	
11	Check valve	2 1/16	
12	Casing head		
13	Valve Gate Plug	1 13/16	
14	Pressure gauge with needle valve		
15	Kill line to rig mud pump manifold		2"



**OPTIONAL**

16	Flanged Valve	1 13/16	
----	---------------	---------	--

CONTRACTOR'S OPTION TO FURNISH: 10. ME

1. All equipment and connections above bradenhead or casinghead. Working pressure of preventers to be 2000 psi minimum.
2. Automatic accumulator (80 gallons, minimum) capable of closing BOP in 30 seconds or less and, holding them closed against full rated working pressure.
3. BOP controls, to be located near drillers' position.
4. Kelly equipped with Kelly cock.
5. Inside blowout preventer or its equivalent on derrick floor at all times with proper threads to fit pipe being used.
6. Kelly saver-sub equipped with rubber casing protector at all times.
7. Plug type blowout preventer tester.
8. Extra set pipe rams to fit drill pipe in use on location at all times.
9. Type RX ring gaskets in place of Type R.

MEC TO FURNISH:

1. Bradenhead or casing head and side valves.
2. Wear bushing. If required.

GENERAL NOTES:

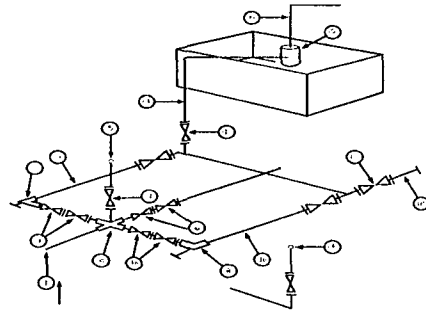
1. Deviations from this drawing may be made only with the express permission of MEC's Drilling Manager.
2. All connections, valves, fittings, piping, etc., subject to well or pump pressure must be flanged (suitable clamp connections acceptable) and have minimum working pressure equal to rated working pressure of preventers up through choke valves must be full opening and suitable for high pressure mud service.
3. Controls to be of standard design and each marked, showing opening and closing position.
4. Chokes will be positioned so as not to hamper or delay changing of choke beans.

5. Replaceable parts for adjustable choke, or bean sizes, retainers, and choke wrenches to be conveniently located for immediate use.
6. All valves to be equipped with hand-wheels or handles ready for immediate use.
7. Choke lines must be suitably anchored.
8. Handwheels and extensions to be connected and ready for use.
9. Valves adjacent to drilling spool to be kept open. Use outside valves except for emergency.
10. All seamless steel control piping (2000 psi working pressure) to have flexible joints to avoid stress. Hoses will be permitted.
11. Casinghead connections shall not be used except in case of emergency.
12. Does not use kill line for routine fill up operations.

# Mack Energy Corporation

Exhibit #11

MINIMUM CHOKE MANIFOLD  
3,000, 5,000, and 10,000 PSI Working Pressure  
3M will be used  
3 MWP - 5 MWP - 10 MWP



Mud Pit

Reserve Pit

\* Location of separator optional

Below Substructure

## Minimum requirements

No.		3,000 MWP			5,000 MWP			10,000 MWP		
		I.D.	Nominal	Rating	I.D.	Nominal	Rating	I.D.	Nominal	Rating
1	Line from drilling Spool		3"	3,000		3"	5,000		3"	10,000
2	Cross 3" x 3" x 3" x 2"			3,000			5,000			
2	Cross 3" x 3" x 3" x 2"									10,000
3	Valve Gate Plug	3 1/8"		3,000	3 1/8"		5,000	3 1/8"		10,000
4	Valve Gate Plug	1 13/16"		3,000	1 13/16"		5,000	1 13/16"		10,000
4a	Valves (1)	2 1/16"		3,000	2 1/16"		5,000	2 1/16"		10,000
5	Pressure Gauge			3,000			5,000			10,000
6	Valve Gate Plug	3 1/8"		3,000	3 1/8"		5,000	3 1/8"		10,000
7	Adjustable Choke (3)	2"		3,000	2"		5,000	2"		10,000
8	Adjustable Choke	1"		3,000	1"		5,000	2"		10,000
9	Line		3"	3,000		3"	5,000		3"	10,000
10	Line		2"	3,000		2"	5,000		2"	10,000
11	Valve Gate Plug	3 1/8"		3,000	3 1/8"		5,000	3 1/8"		10,000
12	Line		3"	1,000		3"	1,000		3"	2,000
13	Line		3"	1,000		3"	1,000		3"	2,000
14	Remote reading compound Standpipe pressure quage			3,000			5,000			10,000
15	Gas Separator		2' x5'			2' x5'			2' x5'	
16	Line		4"	1,000		4"	1,000		4"	2,000
17	Valve Gate Plug	3 1/8"		3,000	3 1/8"		5,000	3 1/8"		10,000

(1) Only one required in Class 3M

(2) Gate valves only shall be used for Class 10 M

(3) Remote operated hydraulic choke required on 5,000 psi and 10,000 psi for drilling.

## EQUIPMENT SPECIFICATIONS AND INSTALLATION INSTRUCTION

- All connections in choke manifold shall be welded, studded, flanged or Cameron clamp of comparable rating.
- All flanges shall be API 6B or 6BX and ring gaskets shall be API RX or BX. Use only BX for 10 MWP.
- All lines shall be securely anchored.
- Chokes shall be equipped with tungsten carbide seats and needles, and replacements shall be available.
- alternate with automatic chokes, a choke manifold pressure gauge shall be located on the rig floor in conjunction with the standpipe pressure gauge.
- Line from drilling spool to choke manifold should be as straight as possible. Lines downstream from chokes shall make turns by large bends or 90 degree bends using bull plugged tees

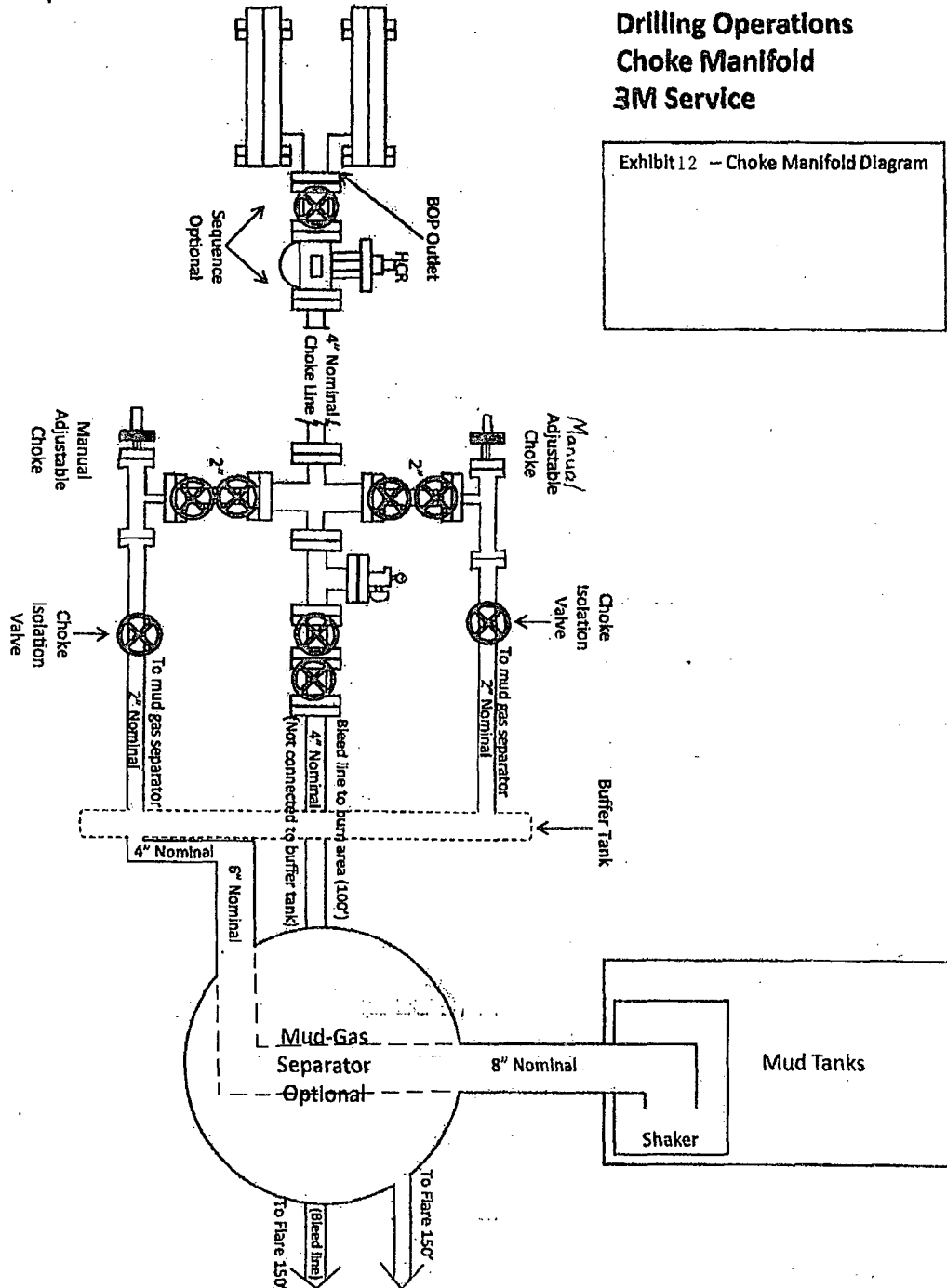
# Mack Energy Corporation

## MANIFOLD SCHEMATIC

Exhibit #12

### Drilling Operations Choke Manifold 3M Service

Exhibit 12 -- Choke Manifold Diagram



**Mack Energy Corporation**  
**Onshore Order #6**  
**Hydrogen Sulfide Drilling Operation Plan**

**I. HYDROGEN SULFIDE TRAINING**

All personnel, whether regularly assigned, contracted, or employed on an unscheduled basis, will receive training from a qualified instructor in the following areas prior to commencing drilling operations on this well:

1. The hazards and characteristics of hydrogen sulfide (H<sub>2</sub>S)
2. The proper use and maintenance of personal protective equipment and life support systems.
3. The proper use of H<sub>2</sub>S detectors, alarms, warning systems, briefing areas, evacuation procedures, and prevailing winds.
4. The proper techniques for first aid and rescue procedures.

In addition, supervisory personnel will be trained in the following areas:

1. The effects of H<sub>2</sub>S on metal components. If high tensile tubular are to be used, personnel will be trained in their special maintenance requirements.
2. Corrective action and shut-in procedures when drilling or reworking a well and blowout prevention and well control procedures.
3. The contents and requirements of the H<sub>2</sub>S Drilling Operations Plan and Public Protection Plan.

There will be an initial training session just prior to encountering a known or probable H<sub>2</sub>S zone (within 3 days or 500 feet) and weekly H<sub>2</sub>S and well control drills for all personnel in each crew. The initial training session shall include a review of the site specific H<sub>2</sub>S Drilling Operations Plan and the Public Protection Plan. **The concentrations of H<sub>2</sub>S of wells in this area from surface to TD are low enough that a contingency plan is not required.**

**II. H<sub>2</sub>S SAFETY EQUIPMENT AND SYSTEMS**

Note: All H<sub>2</sub>S safety equipment and systems will be installed, tested, and operational when drilling reaches a depth of 500 feet above, or three days prior to penetrating the first zone containing or reasonably expected to contain H<sub>2</sub>S.

**1. Well Control Equipment:**

- A. Flare line.
- B. Choke manifold.
- C. Blind rams and pipe rams to accommodate all pipe sizes with properly sized closing unit.
- D. Auxiliary equipment may include if applicable: annular preventer & rotating head.

**2. Protective equipment for essential personnel:**

- A. Mark II Survive air 30-minute units located in the doghouse and at briefing areas, as indicated on well site diagram.

**3. H2S detection and monitoring equipment:**

- A. 1 portable H2S monitors positioned on location for best coverage and response. These units have warning lights and audible sirens when H2S levels of 20 PPM are reached.

**4. Visual warning systems:**

- A. Wind direction indicators as shown on well site diagram (Exhibit #8).
- B. Caution/Danger signs (Exhibit #7) shall be posted on roads providing direct access to location. Signs will be painted a high visibility yellow with black lettering of sufficient size to be readable at a reasonable distance from the immediate location. Bilingual signs will be used, when appropriate. See example attached.

**5. Mud program:**

- A. The mud program has been designed to minimize the volume of H2S circulated to surface. Proper mud weight, safe drilling practices and the use of H2S scavengers will minimize hazards when penetrating H2S bearing zones.

**6. Metallurgy:**

- A. All drill strings, casings, tubing, wellhead, blowout preventer, drilling spool, kill lines, choke manifold and lines, and valves shall be suitable for H2S service.
- B. All elastomers used for packing and seals shall be H2S trim.

**7. Communication:**

- A. Radio communications in company vehicles including cellular telephone and 2-way radio.
- B. Land line (telephone) communication at Office.

**8. Well testing:**

- A. Drill stem testing will be performed with a minimum number of personnel in the immediate vicinity, which are necessary to safely and adequately conduct the test. The drill stem testing will be conducted during daylight hours and formation fluids will not be flowed to the surface. All drill-stem-testing operations conducted in an H2S environment will use the closed chamber method of testing.

B. There will be no drill stem testing.

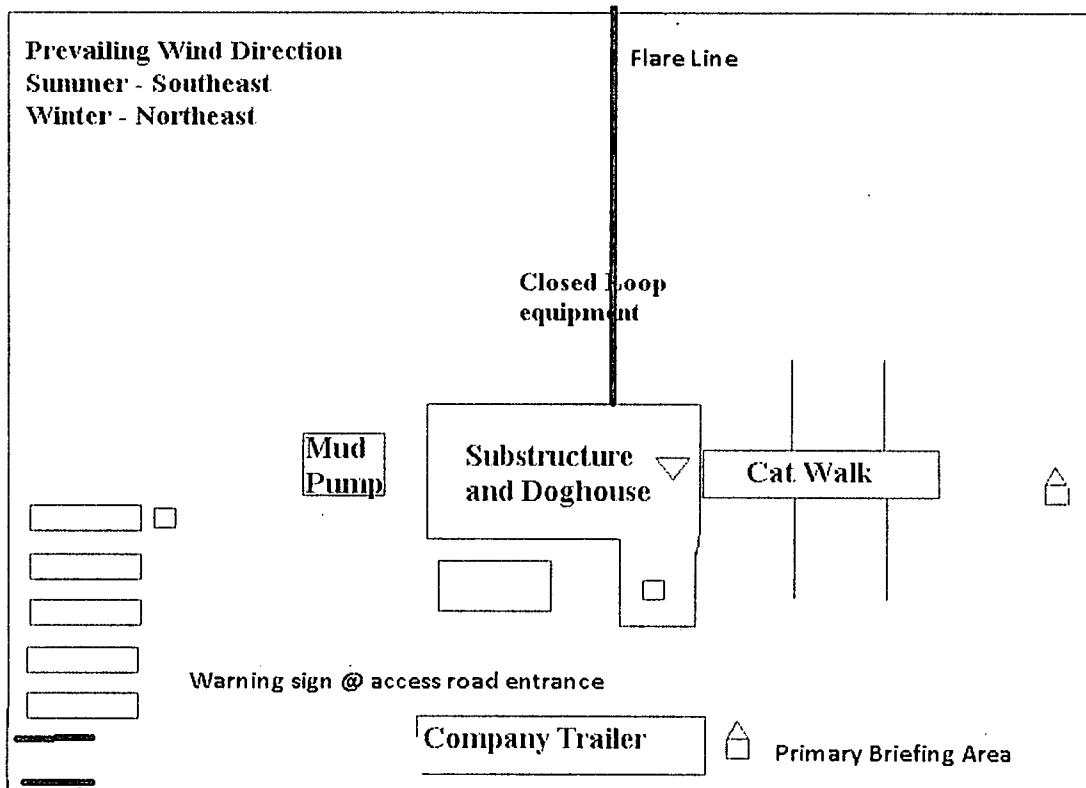
**EXHIBIT #7**

**WARNING**  
**YOU ARE ENTERING AN H2S**  
**AUTHORIZED PERSONNEL ONLY**

1. BEARDS OR CONTACT LENSES NOT ALLOWED
2. HARD HATS REQUIRED
3. SMOKING IN DESIGNATED AREAS ONLY
4. BE WIND CONSCIOUS AT ALL TIMES
5. CHECK WITH MACK ENERGY FOREMAN AT OFFICE

**MACK ENERGY CORPORATION**

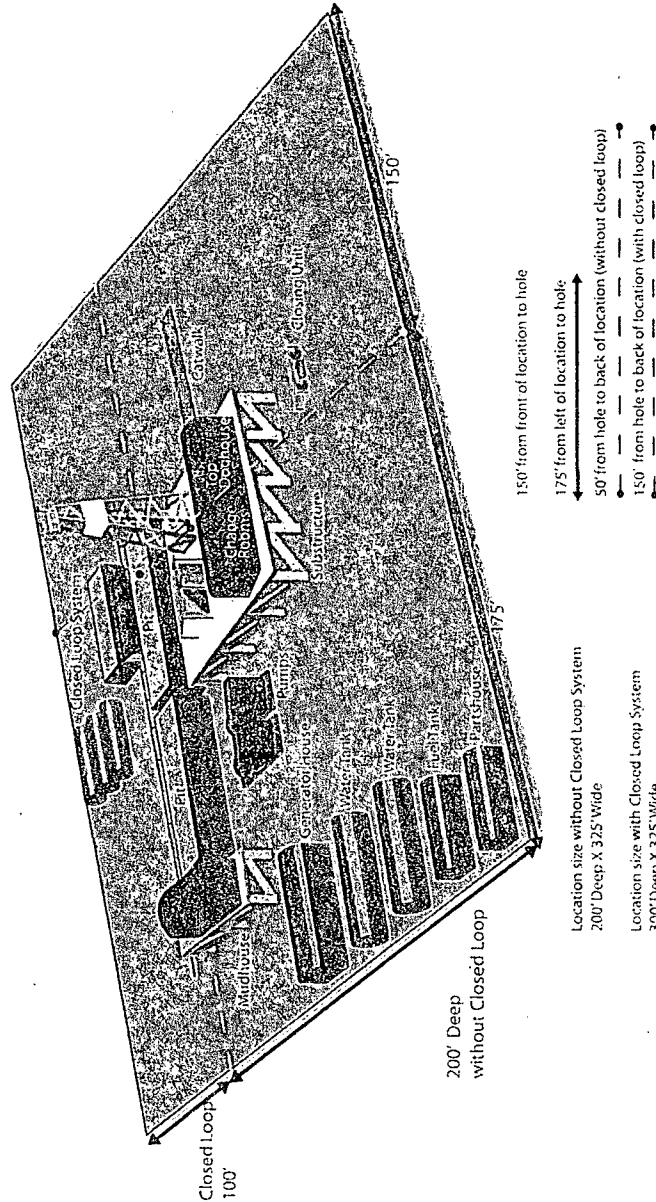
**1-575-748-1288**



- ▽ H2S Monitors with alarms at the bell nipple
- Wind Direction Indicators
- △ Safe Briefing areas with caution signs and breathing equipment min 150 feet from wellhead

**DRILLING LOCATION H2S SAFTY EQUIPMENT**  
**Exhibit # 8**

**Location Layout**



Silver Oak Drilling • 10 Bilco Road • Artesia • NM 88210 • 575.746.4405  
 info@silveroakdrilling.com • www.silveroakdrilling.com

**Mack Energy Corporation Call List, Chaves County**

<b>Artesia (575)</b>	<b>Cellular</b>	<b>Office</b>
Jim Krogman.....	432-934-1596.....	748-1288
Donald Archer.....	748-7875.....	748-1288
Emilio Martinez.....	432-934-7586.....	748-1288
Kevin Garrett.....	432-934-7948.....	748-1288

**Agency Call List (575)****Roswell**

State Police.....	622-7200
City Police.....	624-6770
Sheriff's Office.....	624-7590
Ambulance.....	624-7590
Fire Department.....	624-7590
LEPC (Local Emergency Planning Committee).....	624-6770
NMOCD.....	748-1283
Bureau of Land Management.....	627-0272

**Emergency Services**

Boots & Coots IWC.....	1-800-256-9688 or (281)931-8884
Cudd pressure Control.....	(915)699-0139 or (915)563-3356
Halliburton.....	746-2757
Par Five.....	748-9539
Flight For Life-Lubbock, TX.....	(806)743-9911
Aerocare-Lubbock, TX.....	(806)747-8923
Med Flight Air Amb-Albuquerque, NM.....	(505)842-4433
Lifeguard Air Med Svc: Albuquerque, NM.....	(505)272-3115

## SURFACE USE AND OPERATING PLAN

### 1. Existing Access Roads

- A. All roads to the location are shown in Exhibit #6. The existing lease roads are illustrated and are adequate for travel during drilling and production operations. Upgrading existing roads prior to drilling well, will be done where necessary.
- B. Directions to Location: From the intersection of State Hwy 249 and County Rd #30, go northwest on 249 approx. 2.1 miles, turn south and go 4.4 miles, go southeast 0.5 mile, go southwest 1.2 miles, go southeast 0.75, go northeast .12 mile location is 30' west.
- C. Routine grading and maintenance of existing roads will be conducted as necessary to maintain their condition as long as any operations continue on this lease.

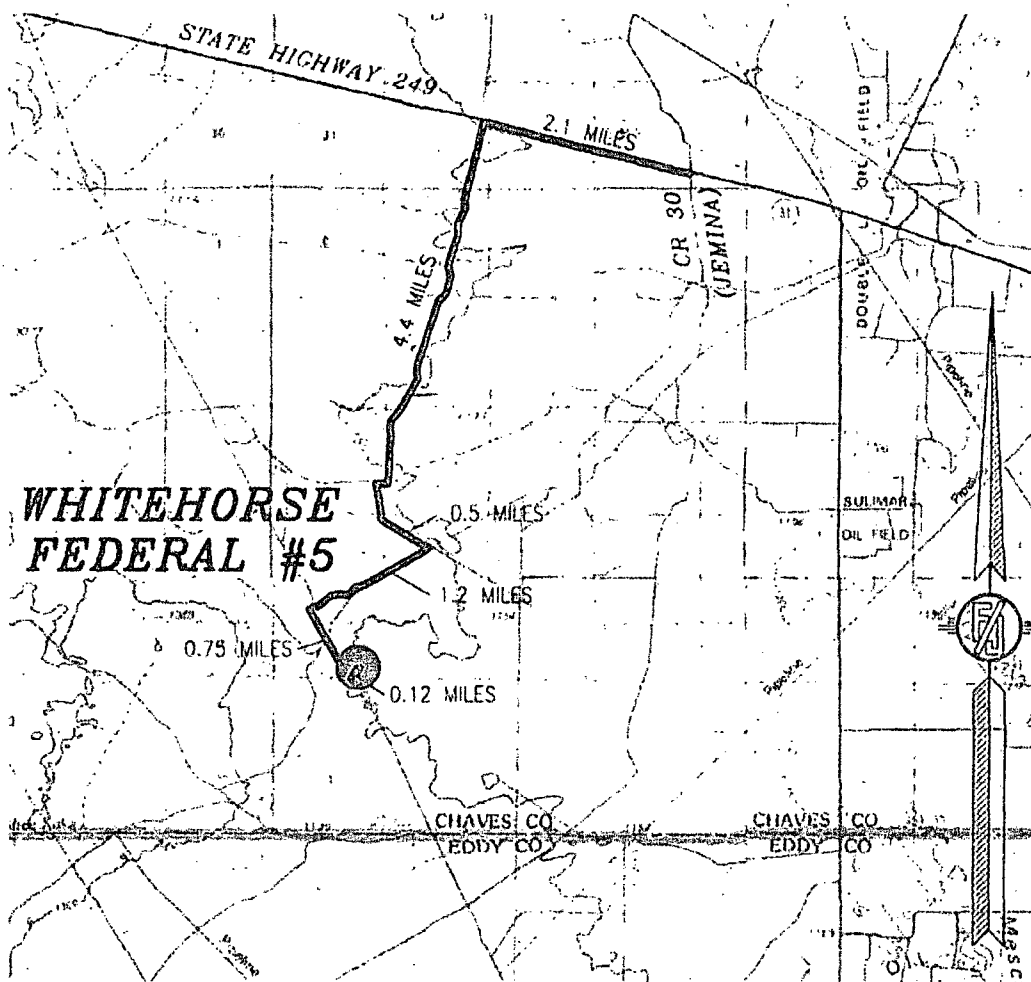


Exhibit #6

### 1. Proposed Access Road:

Vicinity Map shows this location with existing road and 0' of new road. Proposed upgrade of existing road will be done along staked centerline survey. Necessary maintenance will be done to insure traffic stays within proposed ROW. The road has been constructed as follows:



- 1) Round Tank; San Andres Completion: Will be sent to the Whitehorse Federal TB located at the #1 well. The Facility is shown in Exhibit #13.
  - 2) The tank battery and facilities including all flow lines and piping will be installed according to API specifications.
  - 3) Any additional caliche will be obtained from a BLM approved caliche pit. Any additional construction materials will be purchased from contractors.
  - 4) It will be necessary to run electric power if this well is productive. Power will be run by CVE and they will send in a separate plan for power.
- C. Proposed flow line will trend southwest then northwest, then west along access road, within six feet of the roads edge, then south to TB at Whitehorse Federal #1. Flowline will be a 3" poly surface line, 3675' in length with a 40 psi working pressure.

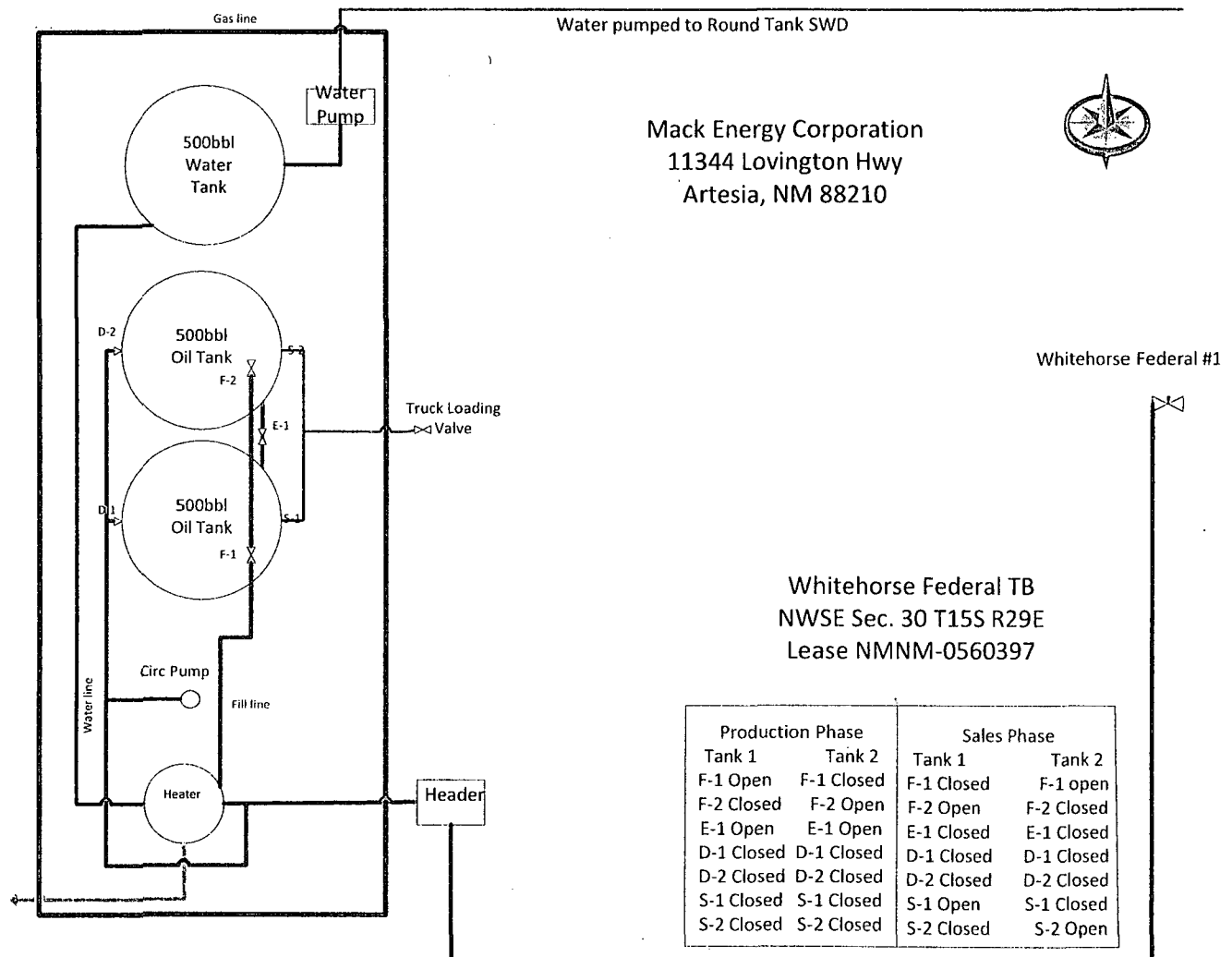


Exhibit #13

#### 4. Location and Type of Water Supply:

The well will be drilled with combination brine and fresh water mud system as outlined in the drilling program. The water will be obtained from commercial water stations in the area and hauled to location by transport truck over the

existing and proposed access roads shown in Exhibit #6. If a commercial fresh water source is nearby, fasline may be laid along existing road ROW's and fresh water pumped to the well. No water well will be drilled on the location.

**5. Source of Construction Materials:**

All caliche required for construction of the drill pad and proposed new access road (approximately 2500 cubic yards) will be obtained from a BLM approved caliche pit.

**6. Methods of Handling Waste:**

- A. Drill cuttings and fluids will be disposed into the steel tanks and hauled to R-360 disposal facility, permit number NM-01-0006. Located on Hwy 62 at MM 66.
- B. Water produced from the well during completion may be disposed into a steel tank. After the well is permanently placed on production, produced water will be collected in tanks (fiberglass) until pumped to our Round Tank SWD; produced oil will be collected in steel tanks until sold.
- C. Garbage and trash produced during drilling or completion operations will be collected in a trash bin and hauled to an approved local landfill. No toxic waste or hazardous chemicals will be produced by this operation.
- D. After the rig is moved out and the well is either completed or abandoned, all waste materials will be cleaned up within 30 days. In the event of a dry hole only a dry hole marker will remain.
- E. Sewage and Gray Water will be placed in container and hauled to a approved facility. Container and disposal handled by L&S Septic.

**7. Ancillary Facilities:**

No airstrip, campsite or other facilities will be built as a result of the operation on this well.

**8. Well Site Layout:**

- A. The well site and elevation plat for the proposed well is shown in Exhibit #14. It was staked by Madron Surveying, Carlsbad, NM.
- B. The drill pad layout, with elevations staked by Madron Surveying, is shown in Exhibit #14. Dimensions of the pad are shown. Topsoil, if available, will be stockpiled per BLM specifications. Because the pad is almost level no major cuts will be required.
- C. Diagram below shows the proposed orientation of the location. No permanent living facilities are planned, but a temporary foreman/toolpusher's trailer will be on location during the drilling operations.





**12. Lessee's and Operator's Representative:**

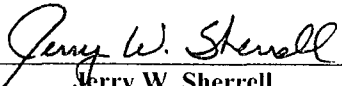
The Mack Energy Corporation representative responsible for assuring compliance with the surface use plan is as follows:

Jerry W. Sherrell  
Mack Energy Corporation  
P.O. Box 960  
Artesia, NM 88211-0960  
Phone (575) 748-1288 (office)  
jerrys@mec.com

**APD CERTIFICATION**

I hereby certify that I, or person under my direct supervision, have inspected the proposed drill site and access route proposed herein; that I am familiar with the conditions which currently exist; that I have full knowledge of State and Federal laws applicable to this operation; that the statements made in this APD package are, to the best of my knowledge, true and correct; and the work associated with the operations proposed herein will be performed in conformity with this APD package and terms and conditions under which it is approved. I also certify that I, or the company I represent, am responsible for the operations conducted under this application. These statements are subject to the provisions of 18 U.S.C. 1001 for the filing of false statements.

Date: 2-25-2014

Signed:   
Jerry W. Sherrell

**PECOS DISTRICT  
Roswell Field Office  
2909 West Second  
Roswell, NM 88201  
CONDITIONS OF APPROVAL  
Whitehorse Federal #5  
May 2014**

OPERATORS NAME: Mack Energy  
LEASE NO: NMNM-0560397  
WELL NAME & NO: WhiteHorse Federal #5  
SURFACE HOLE LOCATION: 2310' FNL & 990' FEL Section 30 T15S R29E  
COUNTY: Chaves

**GENERAL PROVISIONS**

The approval of the Application For Permit To Drill (APD) is in compliance with all applicable laws and regulations: 43 Code of Federal Regulations 3160, the lease terms, Onshore Oil and Gas Orders, Notices To Lessees, New Mexico Oil Conservation Division (NMOCD) Rules, National Historical Preservation Act As Amended, and instructions and orders of the Authorized Officer. Approval of the APD does not warrant that any party holds equitable or legal title. Any request for a variance shall be submitted to the Authorized Officer on Form 3160-5, Sundry Notices and Report on Wells.

The Operator shall submit a Sundry Notice (Form 3160-5) to the Bureau of Land Management, Roswell Field Office (address above) for approval prior to beginning any new surface-disturbing activities or operations that are not specifically addressed and approved by this APD.

A site facility diagram (Onshore Order 3, Section III, I. and 43 CFR 3162.7-5(d)) for the purpose of a site security plan (Onshore Order 3, Section III. H and 43 CFR 3162.7-5 c shall be filed no later than 60 calendar days following first production.

**PERMIT EXPIRATION**

If the permit terminates prior to drilling and drilling cannot be commenced within 60 days after expiration, an operator is required to submit Form 3160-5, Sundry Notices and Reports on Wells, requesting surface reclamation requirements for any surface disturbance. However, if the operator will be able to initiate drilling within 60 days after the expiration of the permit, the operator must have set the conductor pipe in order to allow for an extension of 60 days beyond the expiration date of the APD (Filing of a Sundry Notice is required for this 60 day extension).

**ARCHAEOLOGICAL, PALEONTOLOGY & HISTORICAL SITES**

Any cultural and/or paleontological resource discovered by the operator or by any person working on the operator's behalf shall immediately report such findings to the Authorized Officer. The operator is fully accountable for the actions of their contractors and subcontractors. The operator shall suspend all operations in the immediate area of such discovery until written authorization to proceed is issued by the Authorized Officer. A valuation of the discovery shall be made by the Authorized officer to determine the appropriate actions that shall be required to prevent the loss of significant cultural or scientific values of the discovery. The operator shall be held responsible for the cost of the proper mitigation measures that the Authorized Officer assesses after consultation with the operator on the evaluation and decisions of the discovery. Any unauthorized collection or disturbance of cultural or paleontological resources may result in a shutdown order by the Authorized Officer.

The project falls within the area covered by the Permian Basin Memorandum of Agreement (MOA). The Permian Basin MOA is an optional method of compliance with Section 106 of the National Historic Preservation Act for energy related projects in a 28 quadrangle area of the Pecos District a portion of which is within the Roswell Field Office. The proponent chose to participate in the Permian Basin MOA by planning to avoid all known HRHP eligible and potentially eligible cultural resources. The proponent has contributed funds commensurate to the

undertaking into an account for offsite mitigation. Participation in the Permian Basin MOA serves as mitigation for the effects of this project on cultural resources. If any skeletal remains that might be human or funerary objects are discovered by any activities, the project proponent will cease activities in the area of discovery and notify the BLM within 24 hours as required by the Permian Basin MOA.

## **NOXIOUS WEEDS**

The operator shall be held responsible if noxious weeds become established within the areas of operations (access road and/or well pad). Weed control shall be required on the disturbed land where noxious weeds exist, which includes the roads, pads, associated pipeline corridor, and adjacent land affected by the establishment of weeds due to this action. The operator shall consult with the Authorized Officer for acceptable weed control methods, which include following EPA and BLM requirements and policies.

## **A. CONSTRUCTION**

**NOTIFICATION:** The BLM shall administer compliance and monitor construction of the access road and well pad. Notify the Roswell Field Office at (505) 627-0272 at least three (3) working days prior to commencing construction of the access road and/or well pad.

**The WhiteHorse Fed #5** will have a containment structure or earthen dike that will be constructed and maintained on the south, west, and north sides of the outside boundary of the well pad.

When construction operations are being conducted on this well, the operator shall have the approved Application for Permit to Drill and Conditions of Approval on the well site and they shall be made available upon request by the Authorized Officer.

Construction over and/or immediately adjacent to existing pipelines shall be coordinated, and in accordance with, the relevant pipeline companies' policy.

Any trench left open for eight (8) hours or less is not required to have escape ramps; however, before the trench is backfilled, an agency approved monitor shall walk the entire length of the open trench and remove all trapped fauna. The bottom surface of the trench will be disturbed a minimum of 2 inches in order to arouse any buried fauna. All fauna will be released a minimum of 100 yards from the trench.

For trenches left open for eight (8) hours or more, earthen escape ramps (built at nor more than a 30 degree slope and spaced no more than 500 feet apart) shall be placed in the trench. Structures will also be authorized within the trench. Metal structures will not be authorized. Structures used as escape ramps will be placed at no more than a 30 degree slope and spaced no more than 500 feet apart.

## **TOPSOIL:**

The topsoil will be stripped to approximately 6 inches in depth within the area designated for construction of the well pad. The operator shall stockpile the stripped topsoil in shallow rows adjacent to the constructed well pad. The topsoil will be used for interim and final reclamation of the surface disturbance created by the construction of the well pad. The topsoil will not be used to construct the containment structure or earthen dike that is constructed and maintained on the outside boundaries of the constructed well pad.

## **CLOSED LOOP SYSTEMS:**

The use of a closed system or steel tanks would reduce or eliminate the seepage of drilling fluid into the soil and groundwater. Spills of produced fluids (e.g., saltwater, oil, and/or condensate in the event of a breach, overflow, or spill from storage tanks) could result in contamination of the soil onsite, or offsite, and may potentially impact surface and groundwater resources in the long term.

No reserve pit will be used.

Steel tanks are required for drilling operations: No Pits Allowed:

The operator shall properly dispose of drilling contents at an authorized disposal site.

#### **FEDERAL MINERAL MATERIALS PIT:**

The well pads and access roads have been constructed and surfaced with caliche. If additional material is needed payment shall be made to the BLM prior to removal of any federal mineral materials from any site other than the reserve pit. Call the Roswell Field Office (575) 627-0270.

#### **WELL PAD SURFACING:**

Surfacing of the well pad is not required.

If the operator elects to surface the well pad, the surfacing material will be required to be removed at the time of reclamation.

The well pad shall be constructed in a manner which creates the smallest possible surface disturbance, consistent with safety and operational need.

#### **ON LEASE ACCESS ROADS:**

##### **Road Egress and Ingress**

The access roads are constructed on corner.

##### **Road Width**

The access road shall have a driving surface that creates the smallest possible surface disturbance and does not exceed fourteen (14) feet in width. The maximum width of surface disturbance, when constructing the access road, shall not exceed thirty (30) feet.

##### **Surfacing**

Surfacing material is not required on the new access road driving surface. If the operator elects to surface the new access road or pad, the surfacing material will be required to be removed at the time of reclamation.

Where possible, no improvements should be made on the unsurfaced access road other than to remove vegetation as necessary, road irregularities, safety issues, or to fill low areas that may sustain standing water.

The Authorized Officer reserves the right to require surfacing of any portion of the access road at any time deemed necessary. Surfacing may be required in the event the road deteriorates, erodes, road traffic increases, or it is determined to be beneficial for future field development. The surfacing depth and type of material will be determined at the time of notification.

##### **Crowning**

Crowning shall be done on the access road driving surface. The road crown shall have a grade of approximately 2% (i.e., a 1" crown on a 14' wide road). The road shall conform to Figure-1; cross section and plans for typical road construction.

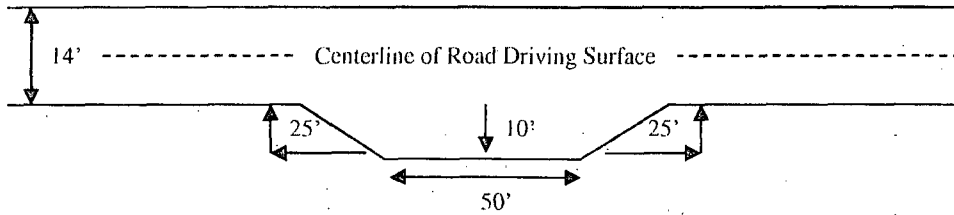
##### **Ditching**

Ditching shall be required on both sides of the road.

## Turnouts

Vehicle turnouts shall be constructed on the road. Turnouts shall be intervisible with interval spacing distance less than 1000 feet. Turnouts shall be constructed on all blind curves. Turnouts shall conform to the following diagram:

**Standard Turnout – Plan View**

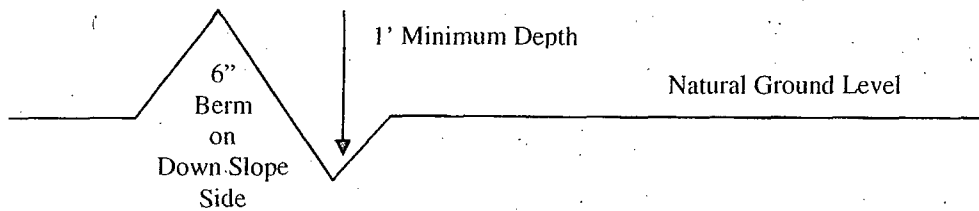


## Drainage

Drainage control systems shall be constructed on the entire length of road (e.g. ditches, sidehill outslowing and insloping, lead-off ditches, culvert installation, and low water crossings).

A typical lead-off ditch has a minimum depth of 1 foot below and a berm of 6 inches above natural ground level. The berm shall be on the down-slope side of the lead-off ditch.

**Cross Section Of Typical Lead-off Ditch**



All lead-off ditches shall be graded to drain water with a 1 percent minimum to 3 percent maximum ditch slope. The spacing interval are variable for lead-off ditches and shall be determined according to the formula for spacing intervals of lead-off ditches, but may be amended depending upon existing soil types and centerline road slope (in %);

## Formula for Spacing Interval Of Lead-off Ditches

Example - On a 4% road slope that is 400 feet long, the water flow shall drain water into a lead-off ditch. Spacing interval shall be determined by the following formula:

$$400 \text{ foot road with } 4\% \text{ road slope: } \frac{400'}{4} + 100' = 200' \text{ lead-off ditch interval}$$

**Culvert Installations** - Appropriately sized culvert(s) shall be installed at any deep waterway channel flow crossing.

## Cattleguards

An appropriately sized cattleguard(s) sufficient to carry out the project shall be installed and maintained at fence crossing(s).

Any existing cattle guard(s) on the access road shall be repaired or replaced if they are damaged or have deteriorated beyond practical use. The operator shall be responsible for the condition of the existing cattle guard(s) that are in place and are utilized during lease operations. Gates or cattle guards on public lands will not be locked or closed to public use unless closure is specifically determined to be necessary and is authorized in writing by the authorized officer.

A gate shall be constructed and fastened securely to H-braces.

### **Fence Requirement**

Where entry is required across a fence line, the fence shall be braced and tied off on both sides of the passageway prior to cutting.

The operator shall notify the private surface landowner or the grazing allotment holder prior to crossing any fence(s).

### **Public Access**

Public access along this road will not be restricted by the holder without specific written approval being granted by the authorized officer. Gates or cattle guards on public lands will not be locked or closed to public use unless closure is specifically determined to be necessary and is authorized in writing by the authorized officer.

### **Visual – Paint Requirement**

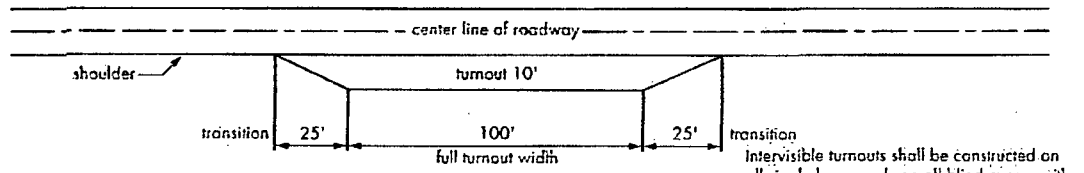
Through color manipulation, by painting well facilities to blend with the rolling to flat vegetative and/or landform setting with a gray-green to brownish color, the view is expected to favorably blend with the form, line, color and texture of the existing landscape. The flat color *Oil Green* from the Standard Environmental Supplemental Colors (March 2007) closely approximates the grey to grey-green setting. All facilities, including the meter building, would be painted this color. The paint formula is *17-0115 TPX (Pantone for Architecture and Interior Colors Guide 2003)*. Cumulative adverse visual impacts can thus be avoided by moving to the more appropriate vegetative/landform setting color scheme, of *Oil Green*.

### **Cave/Karst**

When operations begin, if a cave or karst feature is discovered, care would be taken by employees to avoid any kind of pollution or impact of the cave or karst feature, such as a sinkhole or blowhole. The operator could consider placing a fence around the feature to insure no adverse impacts to livestock and also warn workers of the feature. As the entire operations area is karst land, further mitigation is as follows:

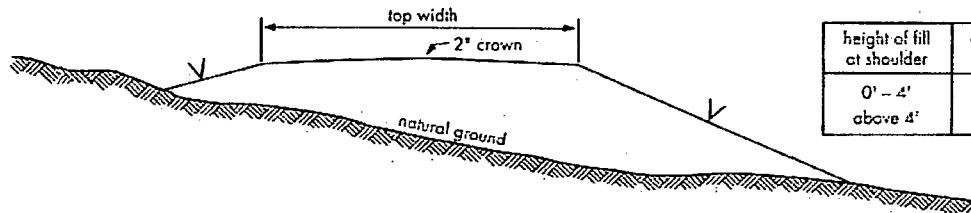
1. Any cave or karst feature, such as a deep sinkhole, discovered by the co-operator/contractor or any person working on the co-operator's/contractor behalf, on BLM-managed public land shall be immediately reported to the authorized officer. An evaluation of the discovery will be made by the authorized officer to determine appropriate action(s). Any decision as to the further mitigation measures will be made by the Authorized Officer after consulting with the co-operator/contractor.
2. Livestock entrapment could be prevented by creating exclosures around identified karst features that pose a hazard to livestock. A separate Environmental Analysis would be prepared to construct an exclosure fence.
3. If at a later date, more significant caves or karst features are found on public land within the project area, that cave or feature may be fenced to exclude livestock grazing and Off Highway Vehicle Use.

**Figure 1 – Cross Sections and Plans For Typical Road Sections**



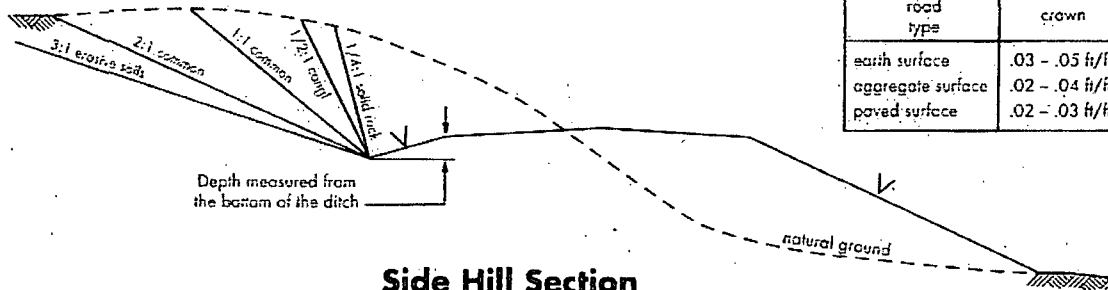
Intervisible turnouts shall be constructed on all single lane roads on all blind curves with additional turnouts as needed to keep spacing below 1000 feet.

**Typical Turnout Plan**



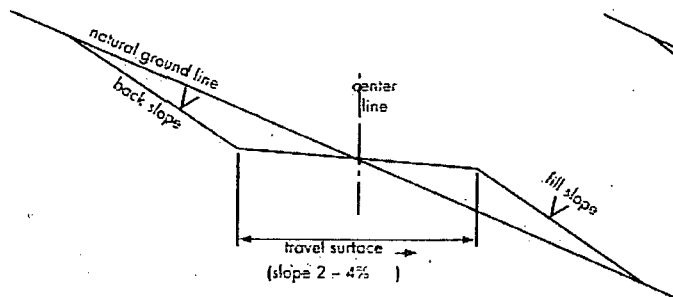
height of fill at shoulder	embankment slope
0' - 4'	3:1
above 4'	2:1

**Embankment Section**

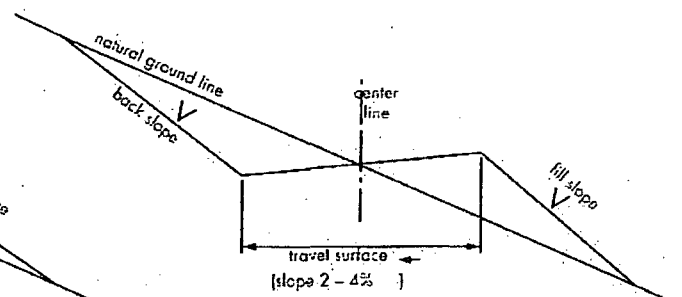


road type	crown
earth surface	.03 - .05 ft/ft
aggregate surface	.02 - .04 ft/ft
paved surface	.02 - .03 ft/ft

**Side Hill Section**



**Typical Outsloped Section**



**Typical Insloped Section**

## **DRILLING**

### **A. DRILLING OPERATIONS REQUIREMENTS:**

1. Call the Roswell Field Office, 2909 West Second St., Roswell, NM 88201. During or after office hours call (575) 627-0205. Engineer on call during office hours call (575) 627-0275 or after office hours call (575) 626-5749.
2. The BLM is to be notified a minimum of 24 hours in advance for a representative to witness:
  - a. Spudding well
  - b. Setting and/or Cementing of all casing strings

The BLM is to be notified a minimum of 4 hours in advance for a representative to witness:

#### **BOPE Tests**

3. A Hydrogen Sulfide (H<sub>2</sub>S) Drilling Operation Contingency Plan shall be activated prior to drilling into the Queen formation. A copy of the plan shall be posted at the drilling site.
4. Unless the production casing has been run and cemented or the well has been properly plugged, the drilling rig shall not be removed from over the hole without prior approval.
5. Include the API Number assigned to well by NMOCD on the subsequent report of setting the first casing string.
6. The operator will accurately measure the drilling rate in feet/min to set the base of the usable water protection casing string(s) opposite competent rock. The record of the drilling rate along with the caliper-gamma ray-neutron well log run to surface will be submitted to this office as well as all other logs run on the borehole 30 days from completion.
7. Air, air-mist or fresh water and nontoxic drilling mud shall be used to drill to the base of the usable water protection casing string(s). Any polymers used will be water based and non-toxic.

### **B. CASING:**

1. The 8-5/8 inch usable water protection casing string(s) shall be at or between **450** feet to **500** feet in competent bedrock. The operator will not be allowed to set water protection string in thick bedded Halite.
  - a. If cement does not circulate to the surface, the Roswell Field Office shall be notified and a temperature survey utilizing an electronic type temperature survey with a surface log readout will be used or a cement bond log shall be run to verify the top of the cement.
  - b. Wait on cement (WOC) time for a primary cement job will be a minimum 18 hours for a water basin or 500 pounds compression strength, whichever is greater. (This is to include the lead cement).
  - c. Wait on cement (WOC) time for a remedial job will be a minimum of 4 hours after bringing cement to surface or 500 pounds compression strength, whichever is greater.
  - d. If cement falls back, remedial action will be done prior to drilling out that string.
2. The minimum required fill of cement behind the 5-1/2 inch production casing is sufficient to circulate to the surface. If cement does not circulate, a temperature survey utilizing an electronic type temperature survey with a surface log readout will be used or a cement bond log shall be run to verify the top of the cement.
3. If hardband drill pipe is rotated inside casing, returns will be monitored for metal. If metal is found in samples, drill pipe will be pulled and rubber protectors which have a larger diameter than the tool joints of the drill pipe will be installed prior to continuing drilling operations.

4. All casing shall be new or reconditioned and tested casing and meet API standards for new casing. The use of reconditioned and tested casing shall be subject to approval by the authorized officer. Approval will be contingent upon the wall thickness of any casing being verified to be at least 87-1/2 per cent of the nominal wall thickness of new casing.

#### **C. PRESSURE CONTROL:**

1. Before drilling below the 8-5/8 inch surface casing shoe, the blowout preventer assembly shall consist of a minimum of One Annular Preventer or Two Ram-Type Preventers and a Kelly Cock/Stabbing Valve.

2. Before drilling below the 8-5/8 inch surface casing shoe, minimum working pressure of the blowout preventer and related equipment (BOPE) shall be 2000 psi.

3. The BOPE shall be installed before drilling below the 8-5/8 inch surface casing shoe and shall be tested as described in Onshore Order No. 2. Any equipment failing to test satisfactorily shall be repaired or replaced.

a. The BLM Roswell Field office shall be notified a minimum of 4 hours in advance for a representative to witness the tests.

b. The BOP/BOPE test shall include a low pressure test from 250 to 300 psi. The test will be held for a minimum of 10 minutes if test is done with a test plug and 30 minutes without a test plug.

c. All tests are required to be recorded on a calibrated test chart. A copy of the BOP/BOPE test will be submitted to the BLM Roswell Field Office at 2909 West Second Street, Roswell, New Mexico 88201.

d. Testing fluid must be water or an appropriate clear liquid suitable for sub-freezing temperatures. Use of drilling mud for testing is not permitted since it can mask small leaks.

e. Testing must be done in a safe workman like manner. Hard line connections shall be required.

f. The requested variance to test the BOPE prior to drilling below the 8-5/8 inch surface casing to the reduced pressure of 2000 psi is approved.

#### **D. MUD PROGRAM REQUIREMENTS:**

1. The drilling operations of this well will be conducted in accordance with the Onshore Oil and Gas Order No. 2 as provided in 43 CFR 3164.1. This includes well control equipment and its testing, mud system and associated equipment, and the casing and cementing.

a. Sufficient quantities of mud materials shall be maintained at the well site, at all times, for the purpose of assuring well control.

b. A mud test shall be performed at least every 24 hours after mudding up to determine, as applicable density, viscosity, gel strength, filtration, and PH.

## **PRODUCTION**

### **Placement of Production Facilities**

Production facilities should be placed on the well pad to allow for maximum interim re-contouring and re-vegetation of the well location.

### **Containment Structures**

A containment structure or earthen dike will be constructed and maintained in order to protect nearby playas or drainages. If the well pad is constructed into a cut on a slope then the uphill side of the well pad will not require the construction of the containment structure or earthen dike, but the construction of the containment structure or dike will be required on the remaining three sides of the well pad which will extend into the uphill portion of the well pad. The containment structure or earthen dike is required so that if oilfield waste contaminant or product contaminant were leaked, spilled, and or released upon the well pad the oilfield waste contaminant or product contaminant shall be contained on the well pad and not enter into the nearby playas. The containment structure or earthen dike shall be constructed two (2) feet high (the containment structure or earthen dike can be constructed higher than the two (2) feet high minimum). The containment structure or earthen dike shall be constructed and maintained during the drilling phase, the production phase and for the life of the well.

The containment structure shall be constructed to hold the capacity of the entire contents of the largest tank, plus 24 hour production, unless more stringent protective requirements are deemed necessary by the Authorized Officer.

### **Netting**

Netting storage tanks and installation of cones on separator stacks would alleviate losses of wildlife species. Interim reclamation and final rehabilitation through re-vegetation would return to wildlife previous levels.

### **Completion Report**

In accordance with 43 CFR 3160, Form 3160-4 (Well Completion or Re-completion Report and Log) must be submitted to the Bureau of Land Management, Roswell Field Office within 30 days after completion of the well or producer. Copies of all open hole and cased hole logs, core descriptions, core analyses, well test data, geologic summaries, sample descriptions, formation test reports, stimulation reports, directional survey (if applicable), and all other surveys or data obtained and compiled during the drilling, completion, and/or work over operations, shall be included with Form 3160-4.

## **INTERIM RECLAMATION**

### **Interim reclamation for the Whitehorse Federal #5 will occur on the West and South sides of the pad.**

Reclamation earthwork for interim and/or final reclamation shall be completed within 6 months of well completion or well plugging (weather permitting), and shall consist of: 1) backfilling pits, 2) re-contouring and stabilizing the well site, access road, cut/fill slopes, drainage channels, utility and pipeline corridors, and all other disturbed areas, to approximately the original contour, shape, function, and configuration that existed before construction (any compacted backfilling activities shall ensure proper spoils placement, settling, and stabilization), 3) surface ripping, prior to topsoil placement, to a depth of 18-24 inches deep on 18-24 inch centers to reduce compaction, 4) final grading and replacement of all topsoil so that no topsoil's remains in the stockpile, 5) seeding in accordance with reclamation portions of the APD and these COA's.

During interim reclamation, if the surface area of the constructed well pad is reduced then the original constructed containment structure or earthen dike and a portion of the constructed well pad will be excavated and removed. During interim reclamation, the containment structure or earthen dike will then be re-constructed on the outside boundaries of the reduced in size constructed well pad.

Any subsequent re-disturbance of interim reclamation shall be reclaimed within six (6) months by the same means described herein.

**Prior to conducting interim reclamation, the operator is required to:**

- Submit a Sundry Notices and Reports on Wells (Notice of Intent), Form 3160-5, prior to conducting interim reclamation.
- Contact BLM at least three (3) working days prior to conducting any interim reclamation activities, and prior to seeding.

During reclamation, the removal of caliche is important to increasing the success of revegetating the site. Removed caliche may be used in road repairs, fire walls or for building other roads and locations. In addition, in order to operate the well or complete workover operations, it may be necessary to drive, park and operate on restored interim vegetation within the previously disturbed area. Disturbing revegetated areas for production or workover operations will be allowed. If there is significant disturbance and loss of vegetation, the area will need to be revegetated. Communicate with the appropriate BLM office for any exceptions/exemptions if needed.

Disturbing re-vegetated areas for production or work over operations will be allowed. If there is significant disturbance and loss of vegetation, the area will need to be re-vegetated. Communicate with the appropriate BLM office for any exceptions/exemptions if needed.

Use a certified noxious weed-free seed mixture. Use seed tested for viability and purity in accordance with State law(s) within nine months prior to purchase. Use a commercial seed mixture certified or registered and tagged in accordance with State law(s). Make the seed mixture labels available for BLM inspection.

**FINAL ABANDONMENT**

1. Upon abandonment of the well a Notice of Intent for Plug and Abandonment describing plugging procedures. Followed within 30 days you shall file with this office, a Subsequent Report of Abandonment (Form 3160-5). To be included with this report is where the plugs were placed; volumes of cement used and well bore schematic as plugged.
2. On private surface/federal mineral estate land the reclamation procedures on the road and well pad shall be accomplished in accordance with the Private Surface Land Owner agreements and a copy of the release is to be submitted upon abandonment.
3. Upon abandonment of the well, all casing shall be cut-off at the base of the cellar or 3-feet below final restored ground level (whichever is deeper). The well bore shall then be covered with a metal plate at least ¼ inch thick and welded in place. The following information shall be permanently inscribed on the dry hole marker: Well name and number, the name of the operator, the lease serial number, the surveyed location (the quarter-quarter section, section, township and range or other authorized survey designation acceptable to the authorized officer; such as metes and bounds).
4. **The Operator shall promptly plug and abandoned each newly completed, re-completed or producing well which is not capable of producing in paying quantities.** No well may be temporarily abandoned for more than 30 days without prior approval from this office. When justified by the Operator, BLM may authorize additional delays, no one of which may exceed an additional 12 months. Upon removal of drilling or producing equipment from the site of a well which is to be permanently abandoned, the surface of the lands disturbed shall be reclaimed in accordance with an approved Notice of Intent for reclamation.

**SURFACE USE PLAN OF OPERATIONS**

Surface Reclamation must be completed within 6 months of well plugging. The Operator shall submit to this office a Notice of Intent for Reclamation with described procedures, Form 3160-5.

### **PIPELINE PROTECTION REQUIREMENT**

Precautionary measures shall be taken by the operator during construction of the access road to protect existing pipelines that the access road will cross over. An earthen berm; 2 feet high by 3 feet wide and 14 feet across the access road travelway (2' X 3' X 14'), shall be constructed over existing pipelines. The operator shall be held responsible for any damage to existing pipelines. If the pipeline is ruptured and/or damaged the operator shall immediately cease construction operations and repair the pipeline. The operator shall be held liable for any unsafe construction operations that threaten human life and/or cause the destruction of equipment.

### **RANGE REQUIREMENT**

The Operator shall keep traffic to a minimum, with the speed limit less than 20 MPH. When conflicts with livestock do arise as a result of the access road and well pad construction, in consultation with the allottee, measures will be taken to resolve the conflicts.

### **SPECIAL STIPULATION:**

If frac ponds are necessary submit for approval a right-of-way application or sundry notice (Form 3160-5) to the BLM, Roswell Field Office 2902 West Second, Roswell, NM 88201. If frac pond is located on private/State surface and support the enhanced production of federal minerals BLM approval is necessary.

The frac pond will only be authorized to contain freshwater and testing of water quality is required. Additives are not allowed without consent of the authorized officer. If at any time the water in the frac pond becomes polluted with salts or other contaminants, use of the frac pond will cease and desist, and all liquids will be removed from the frac pond and disposed of properly. Mineral materials extracted during construction of the frac pond will be stored on-location and/or used for constructing the frac pond.

The following Soils or Soil associations may represent these ecological sites:

ECTOR VERY COBBLY LOAM, 3-15% SLOPE  
ECTOR VERY COBBLY LOAM, DRY, 3-15% SLOPE

Shallow SD-3 Ecological Site  
Very Shallow, CP-4 Ecological Site

APRIL 4, 2006

<u>Common Name and Preferred Variety</u>	<u>Scientific Name</u>	<u>Pounds of Pure Live Seed Per A</u>
Blue grama Or Black grama	( <i>Bouteloua gracilis</i> ) ( <i>B. eriopoda</i> )	3.00
ideoats grama	( <i>Bouteloua curtipendula</i> )	2.00
few Mexico Feathergrass Or Green sprangletop	( <i>Stipa neomexicana</i> ) ( <i>Leptochloa dubia</i> )	1.00
Desert or Scarlet Globemallow	( <i>Sphaeralcea ambigua</i> or <i>S. coccinea</i> )	1.00
Croton	( <i>Croton spp.</i> )	1.00
Buckwheat	( <i>Eriogonum spp.</i> )	<u>1.00</u>
TOTAL POUNDS PURE LIVE SEED (pls) PER ACRE Certified Weed Free Seed		9.00

If one species is not available  
Increase ALL other proportionately  
Use no less than four (4) species, including one (1) forb.

No less than 9 pounds pls per acre shall be applied.

United States Department of the Interior  
Bureau of Land Management  
Roswell Field Office

Refer To: 3160-3

March 21, 2014

To: AFM, Lands & Minerals, RFO

From: Geologist, RFO

Subject: Geologic Review of Application for Permit to Drill

Operator: Mack Energy Corporation

Well Name and Number: Whitehorse Federal No. 5

Location: 2310' FNL & 990' FEL

Section: 30, T. 15 S., R. 29 E., NMPM

County: Chaves

State: NM

Lease No.: NM-0560397

Date APD Rec'd: Feb. 25, 2014

1. Surface Elevation **3801 ft.** Surface Geology **X**

2. Geologic Marker Tops (from reports on surrounding wells):

<u>Geologic Marker</u>	<u>Depth</u>
Yates	780'
Queen	1488'
Grayburg	1882'
San Andres	2210'

Marker tops taken from the IWR of the No. 4 Fitzgerald USA well located in the SE $\frac{1}{4}$ NE $\frac{1}{4}$ , sec. 24, T. 15 S., R. 28 E., NMPM.

<u>Geologic Marker</u>	<u>Depth</u>
T/Salt	232'
B/Salt	638'
Queen	1522'

Marker beds taken from the IWR of the Mary Brainard No. 1 well located in the NW $\frac{1}{4}$ NW $\frac{1}{4}$ , sec. 19, T. 15 S., R. 29 E., NMPM.

<u>Geologic Marker</u>	<u>Depth</u>
Penn	7678'
Canyon	8182'
Strawn	8408'
Atoka	8790'
Miss	9096'

Marker tops taken from the Redwall State Com. No. 1 well located in the SW $\frac{1}{4}$ NW $\frac{1}{4}$ , sec. 21. T. 15 S., R. 29 E., NMPM

3. Usable Water Information: State Engineer's Office (SEO) water listing shows usable water for stock in the Quaternary Alluvium and Artesia Group. Although SEO identifies the Artesia group as a source of usable water the evidence is contrary to their findings. The top of the Tansil occurs at a depth of approximately 690 ft. and the Yates occurs at an approximate depth of 750 to 800 ft. The deepest water well drilled was 200 ft. deep and may have penetrated the very top of the Rustler Anhy. The top of the Rustler formation occurs at approximate depths of 200 to 235 ft. in this area. The top of the Rustler formation is composed of Halite (salt) and Anhydrite occurring as stringers and thin beds. This interbedded section generally occurs from 300 to 490 ft.

Deepest Expected Fresh Water: 200'

Does Surface Casing cover all anticipated usable water zones? On January 5, 2009 the operators representatives had a discussion with our geologist regarding the borehole environment. Originally our geologist wanted the surface casing set at an approximate depth of 210 ft. (usable water protection string) However, the operator has encountered two prevalent lost circulation zones at approximate depths of **230 and 400 ft.** The operator found that setting the water protection string at **400 to 450 ft.** should result in a good cement job around the casing. A review of casing depths in the area indicates most operators set surface at approximate depths between 450 ft. and 500 ft. Well log interpretations indicate a competent 10 ft thick carbonate bed occurring in equivalent depths. It appears that the presence of the Anhydrite beds is the controlling factor for a good seal around the casing shoe. **Therefore setting the surface casing in competent bedrock between 450 and 500 ft. should protect the usable water**

**The operator will not be allowed to set surface casing in the thick bedded Halite.**

**Yes, the operator estimates the last possible water at 140 ft. The Rustler occurs at an approximate depth of 180 ft. However, thin bedded Halite and Anhydrite are interbedded from approximate depths of 380 to 450 ft. Surface casing should be set between 450 to 500 ft. It appears a tight carbonate occurs at an approximate depth of 480 ft.**

**The operator will not be allowed to set surface casing in the thick bedded Halite.**

Controlled Water Basin: Yes - Roswell.

Remarks: The operator will be required to measure the drilling rate accurately in order to set the usable water protecting casing string opposite competent bedrock. The record of the drilling rate in ft/min. will be submitted to this office along with the caliper - gamma ray - neutron log from total depth to surface as well as all other logs run in the borehole thirty days from completion.

Witness surface casing.

4. Geologic Hazards? Yes

H2S **X** Karst **Med** Abnormal Pressures Other **X**

Remarks: H2S has been reported in the reason the order of **500 to 41,000 ppm both in the gas stream and the stock tanks**. The H2S in the Queen formation has been documented in many other fields. High pressure water zone in the Queen formation may be present. Possible lost circulation in the redbeds and the Grayburg and San Andres Formations. There is a medium potential for karst type features to occur in this area.

5. Other Mineral Deposits: None

6. References:

New Mexico State Engineer's Water Well Listings;

Eddy County H2S List;

Hendrickson and Jones, Geology and Ground-Water Resources of Eddy County, New Mexico; Ground-Water Report No. 3, New Mexico Bureau of Mines and Mineral Resources, Campus Station, Socorro, New Mexico, p. 83-84.

Oil and Gas historical well files

7. No active mining claims are located in this vicinity.

Geologist Signature: /s/ John S. Simitz

Date: March 21, 2014