

DISTRICT I
1825 N. French Dr., Hobbs, NM 88240
Phone (505) 393-8181 Fax: (505) 393-0720

DISTRICT II
811 S. First St., Artesia, NM 88210
Phone (505) 748-1283 Fax: (505) 748-9720

DISTRICT III
1000 Rio Brazos Rd., Aztec, NM 87410
Phone (505) 334-8178 Fax: (505) 334-8170

DISTRICT IV
1220 S. St. Francis Dr., Santa Fe, NM 87505
Phone (505) 476-3460 Fax: (505) 476-3462

State of New Mexico CONSERVATION
Energy, Minerals and Natural Resources Department
ARTESIA DISTRICT
OIL CONSERVATION DIVISION
1220 South St. Francis Dr.
Santa Fe, New Mexico 87505

Form C-102
Revised August 1, 2011

Submit one copy to appropriate
District Office

RECEIVED

WELL LOCATION AND ACREAGE DEDICATION PLAT

☒ AMENDED REPORT
As Drilled

API Number 30-015-42007	Pool Code 78053	Pool Name WC-015 G-08 S212915D; BS
Property Code 40361	Property Name BIG EDDY UNIT D19	Well Number 35H
OGRID No. 260737	Operator Name BOPCO, L.P.	Elevation 3148'

Surface Location

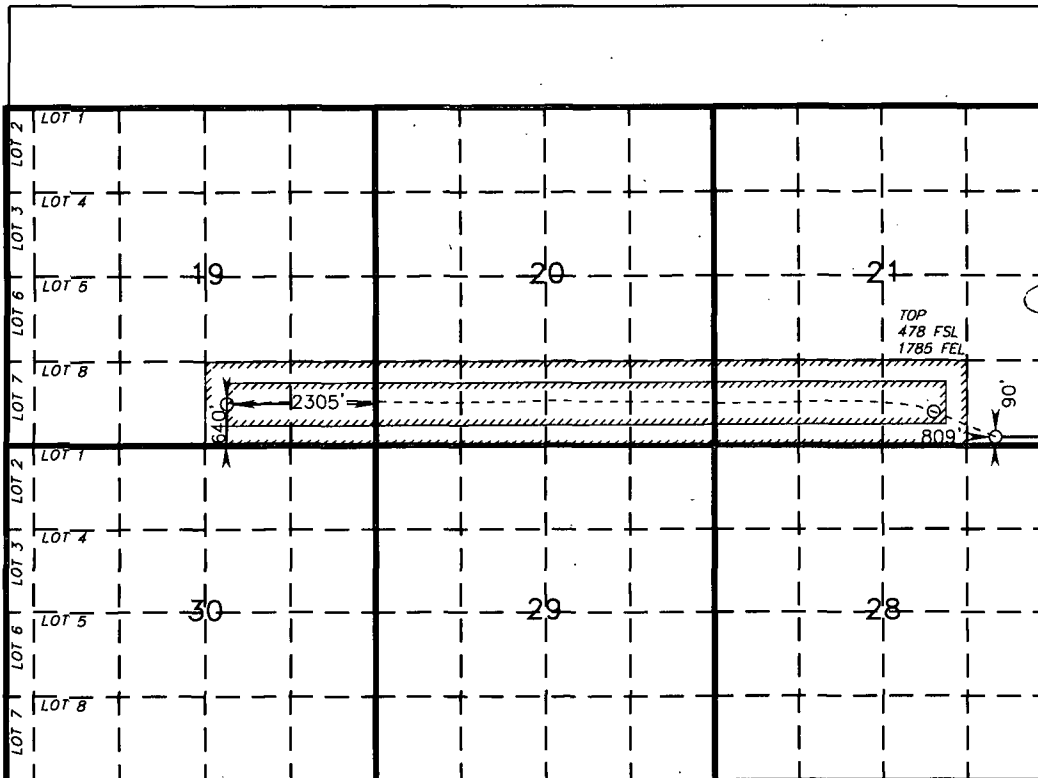
UL or lot No.	Section	Township	Range	Lot Idn	Feet from the	North/South line	Feet from the	East/West line	County
P	21	21 S	30 E		90	SOUTH	809	EAST	EDDY

Bottom Hole Location If Different From Surface

UL or lot No.	Section	Township	Range	Lot Idn	Feet from the	North/South line	Feet from the	East/West line	County
O	19	21 S	30 E		640	SOUTH	2305	EAST	EDDY

Dedicated Acres 360	Joint or Infill	Consolidation Code	Order No.
------------------------	-----------------	--------------------	-----------

NO ALLOWABLE WILL BE ASSIGNED TO THIS COMPLETION UNTIL ALL INTERESTS HAVE BEEN CONSOLIDATED
OR A NON-STANDARD UNIT HAS BEEN APPROVED BY THE DIVISION



OPERATOR CERTIFICATION

I hereby certify that the information contained herein is true and complete to the best of my knowledge and belief, and that this organization either owns a working interest or unleased mineral interest in the land including the proposed bottom hole location or has a right to drill this well at this location pursuant to a contract with an owner of such a mineral or working interest, or to a voluntary pooling agreement or a compulsory pooling order heretofore entered by the division.

Tracie J Cherry 08/11/14
Signature Date

Tracie J Cherry
Printed Name
tjcherry@basspet.com
Email Address

SURVEYOR CERTIFICATION

I hereby certify that the well location shown on this plat was plotted from field notes of actual surveys made by me or under my supervision and that the same is true and correct to the best of my belief.

FEBRUARY 25, 2014

Date Surveyed
Signature & Seal of Professional Surveyor

Certificate No. 7977
BASSPET.COM

0' 1500' 3000' 4500' 6000'
SCALE: 1" = 3000'
WO Num.: 30126

PROPOSED BOTTOM
HOLE LOCATION

Lat - N 32°27'33.19"
Long - W 103°55'05.23"
NMSPCE- N 531027.0
E 628068.9
(NAD-27)

SURFACE LOCATION

Lat - N 32°27'27.52"
Long - W 103°52'44.54"
NMSPCE- N 530502.8
E 640125.2
(NAD-27)