

State of New Mexico

**AUG 20 2014**

Form C-102

Revised August 1, 2011

Submit one copy to appropriate

District Office

☒ AMENDED REPORT

*As Drilled*

Energy, Minerals & Natural Resources Department

**OIL CONSERVATION DIVISION**

1220 South St. Francis Dr.

Santa Fe, NM 87505

**WELL LOCATION AND ACREAGE DEDICATION PLAT**

<sup>1</sup> API Number <b>30-015-41514</b>		<sup>2</sup> Pool Code <b>97056</b>		<sup>3</sup> Pool Name <b>Hackberry North; Bone Spring</b>	
<sup>4</sup> Property Code <b>38797</b>		<sup>5</sup> Property Name <b>RIGEL 20 FED COM</b>			<sup>6</sup> Well Number <b>SH</b>
<sup>7</sup> OGRID No. <b>6137</b>		<sup>8</sup> Operator Name <b>DEVON ENERGY PRODUCTION COMPANY, L.P.</b>			<sup>9</sup> Elevation <b>3417.2</b>

<sup>10</sup> Surface Location

UL or lot no.	Section	Township	Range	Lot Idn	Feet from the	North/South line	Feet from the	East/West line	County
<b>A</b>	<b>19</b>	<b>19 S</b>	<b>31 E</b>		<b>480</b>	<b>NORTH</b>	<b>190</b>	<b>EAST</b>	<b>EDDY</b>

<sup>11</sup> Bottom Hole Location If Different From Surface

UL or lot no.	Section	Township	Range	Lot Idn	Feet from the	North/South line	Feet from the	East/West line	County
<b>A</b>	<b>20</b>	<b>19 S</b>	<b>31 E</b>		<b>595</b>	<b>NORTH</b>	<b>342</b>	<b>EAST</b>	<b>EDDY</b>

<sup>12</sup> Dedicated Acres	<sup>13</sup> Joint or Infill	<sup>14</sup> Consolidation Code	<sup>15</sup> Order No.
<b>160</b>			

No allowable will be assigned to this completion until all interests have been consolidated or a non-standard unit has been approved by the division.

**<sup>17</sup> OPERATOR CERTIFICATION**

I hereby certify that the information contained herein is true and complete to the best of my knowledge and belief, and that this organization either owns a working interest or unleased mineral interest in the land including the proposed bottom hole location or has a right to drill this well at this location pursuant to a contract with an owner of such a mineral or working interest, or to a voluntary pooling agreement or a compulsory pooling order heretofore entered by the division.

*Tami Laird* 8/14/14  
Signature Date

Tami Laird, Regulatory Analyst

Printed Name

tami.laird@dm.com

E-mail Address

**<sup>18</sup> SURVEYOR CERTIFICATION**

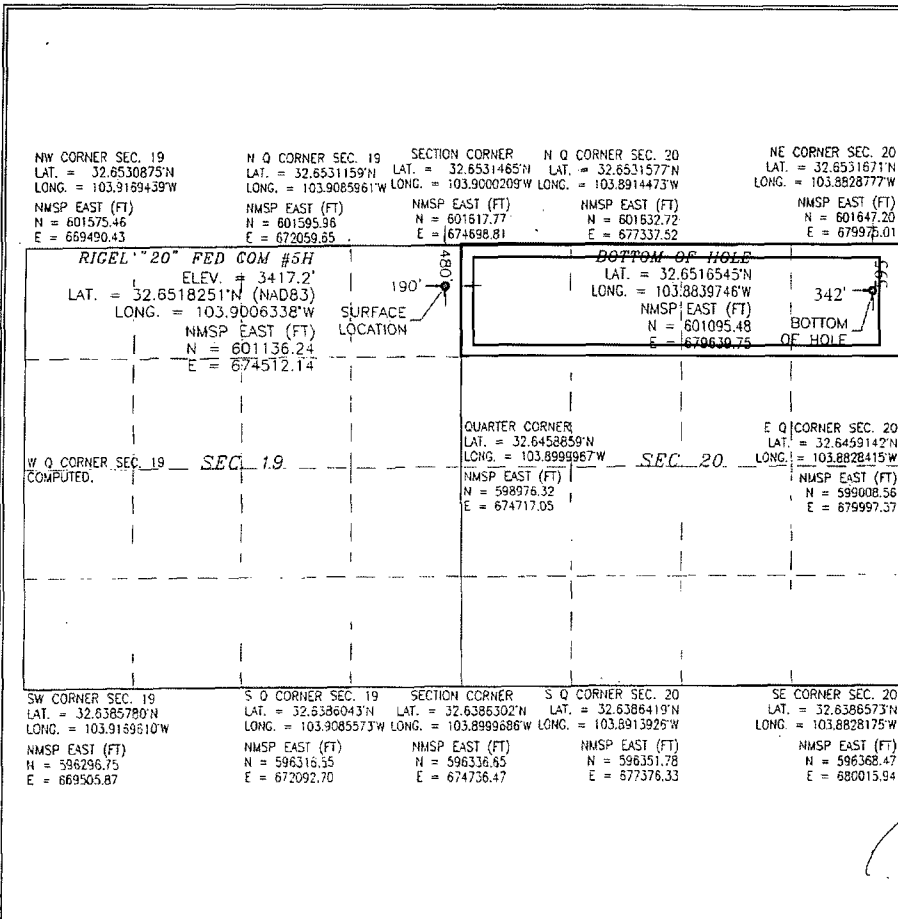
I hereby certify that the well location shown on this plat was plotted from field notes of actual surveys made by me or under my supervision, and that the same is true and correct to the best of my belief.

FEBRUARY 3 2014  
Date of Survey

*Araceli Jaramillo*  
Signature and Seal of Professional Surveyor

Certificate Number: **4410N F. JARAMILLO, PLS 12797**

SURVEY NO. 1597A



PP: 48' FWL & 532' FNL  
20-19S-31E

Producing Area: **Producing Area**

Project Area: **Project Area**

Mewbourne Oil Company

Well Name: Derringer Federal SWD #1

Updated by: R. Sharpe

Date Updated: 5/1/2014

Spud Date: 2/17/14

30-015-30828

20" 94# J55 BT&C

Set @ 375.00'

Cement to surface: Yes

13 3/8" 54.5# H40

Set @ 1245'

Cement to surface: yes

Circ 100 sks to pit.

9 5/8" 36# k55

Set @ 3229'

Cement to surface: Yes

7" 26# HCP110 LT&C

Set @ 12660'

cement to surface: yes

Packer set @ 12619.61'

8 3/4" Open hole

12660'-13200'

NM OIL CONSERVATION  
ARTESIA DISTRICT

AUG 19 2014

RECEIVED

**Tubing Detail:**

1	7" x 3 1/2" 1X Pkr w/carbide slips	7.15
1	T2 O/O Tool w/2.81" X profile	1.84
383	3 1/2" 9.3# L80 tbg (IPC w/Permian 1850)	12610.62
	Total Tubing	12619.61
	KB Correction	0
	Tubing Set @	12619.61