

Submit 1 Copy To Appropriate District Office

District I- (575) 393-6161
1625 N. French Dr., Hobbs, NM 88240
District II- (575) 748-1283
1301 W. Grand Ave., Artesia, NM 88210
District III- (505) 334-6178
1000 Rio Brazos Rd., Aztec, NM 87410
District IV- (505) 476-3460
1220 S. St. Francis Dr., Santa Fe, NM 87505

State of New Mexico
Energy, Minerals and Natural Resources

OIL CONSERVATION DIVISION
1220 South St. Francis Dr.
Santa Fe, NM 87505

Form C-103

Revised July 18, 2013

SUNDRY NOTICES AND REPORTS ON WELLS (DO NOT USE THIS FORM FOR PROPOSALS TO DRILL OR TO DEEPEN OR PLUG BACK TO A DIFFERENT RESERVOIR, USE "APPLICATION FOR PERMIT" (FORM C-101) FOR SUCH PROPOSALS.)		WELL API NO. 30-015-42381
1. Type of Well: Oil Well <input checked="" type="checkbox"/> Gas Well <input type="checkbox"/> Other <input type="checkbox"/>		5. Indicate Type of Lease STATE <input type="checkbox"/> FEE <input checked="" type="checkbox"/>
2. Name of Operator Mack Energy Corporation		6. State Oil & Gas Lease No.
3. Address of Operator P.O. Box 960 Artesia, NM 88210		7. Lease Name or Unit Agreement Name Smedley Fee
4. Well Location Unit Letter <u>J</u> <u>2161</u> feet from the <u>South</u> line and <u>1481</u> feet from the <u>East</u> line Section <u>35</u> Township <u>22S</u> Range <u>27E</u> NMPM County <u>Eddy</u>		8. Well Number 1
11. Elevation (Show whether DR, RKB, RT, GR etc.) 3084.2' GR		9. OGRID Number 013837
		10. Pool Name or Wildcat Cass Draw; Bone Spring

12. Check Appropriate Box to Indicate Nature of Notice, Report or Other Data

NOTICE OF INTENTION TO:

PERFORM REMEDIAL WORK ☐ PLUG AND ABANDON ☐
TEMPORARILY ABANDON ☐ CHANGE PLANS ☐
PULL OR ALTER CASING ☐ MULTIPLE COMPL ☐
DOWNHOLE COMMINGLE ☐
CLOSED-LOOP SYSTEM ☐
OTHER: ☐

SUBSEQUENT REPORT OF:

REMEDIALWORK ☐ ALTERING CASING ☐
COMMENCE DRILLING OPNS. ☐ P AND A ☐
CASING/CEMENT JOB ☐
OTHER: Move Location ☒

13. Describe proposed or completed operations. (Clearly state all pertinent details, and give pertinent dates, including estimated date of starting any proposed work). SEE RULE 19.15.7.14 NMAC. For Multiple Completions: Attach wellbore diagram of proposed completion or recompletion.

Mack Energy has moved the Smedley Fee #1.

Smedley Fee #1

SHL: Unit J, 2161 FSL & 1481 FEL

BHL Unit J, 2285 FSL & 2285 FEL

Sec. 35 T22S R27E

NM OIL CONSERVATION
ARTESIA DISTRICT

DEC 12 2014

RECEIVED

Spud Date:

Rig Release Date:

I hereby certify that the information above is true and complete to the best of my knowledge and belief.

SIGNATURE Jerry W. Sherrell TITLE Production Clerk DATE 12/11/14

Type or print name Jerry W. Sherrell

E-mail address: jerrys@mec.com

PHONE: 575-748-1288

For State Use Only

APPROVED BY: [Signature] TITLE Dist. Supervisor DATE 12/19/14

Conditions of Approval (if any):

DEC 12 2014

District I
1625 N. French Dr., Hobbs, NM 88240
Phone: (575) 393-6161 Fax: (575) 393-0720
District II
811 S. First St., Artesia, NM 88210
Phone: (575) 748-1283 Fax: (575) 748-9720
District III
1000 Rio Brazos Road, Aztec, NM 87410
Phone: (505) 334-6178 Fax: (505) 334-6170
District IV
1220 S. St. Francis Dr., Santa Fe, NM 87505
Phone: (505) 476-3460 Fax: (505) 476-3462

State of New Mexico
Energy, Minerals & Natural Resources Department
OIL CONSERVATION DIVISION
1220 South St. Francis Dr.
Santa Fe, NM 87505

Form C-102
Revised August 1, 2011
Submit one copy to appropriate
District Office

☐ AMENDED REPORT

WELL LOCATION AND ACREAGE DEDICATION PLAT

¹ API Number 30-015-42381	² Pool Code 10380	³ Pool Name Cass Draw; Bone Spring
⁴ Property Code 313253	⁵ Property Name SMEDLEY FEE	
⁷ OGRID No. 13837	⁸ Operator Name MACK ENERGY CORPORATION	⁶ Well Number 1
		⁹ Elevation 3084.2

¹⁰ Surface Location

UL or lot no.	Section	Township	Range	Lot Idn	Feet from the	North/South line	Feet from the	East/West line	County
J	35	22 S	27 E		2161	SOUTH	1481	EAST	EDDY

¹¹ Bottom Hole Location If Different From Surface

UL or lot no.	Section	Township	Range	Lot Idn	Feet from the	North/South line	Feet from the	East/West line	County
J	35	22 S	27 E		2285	SOUTH	2285	EAST	EDDY

¹² Dedicated Acres 40	¹³ Joint or Infill	¹⁴ Consolidation Code	¹⁵ Order No.
--	-------------------------------	----------------------------------	-------------------------

No allowable will be assigned to this completion until all interests have been consolidated or a non-standard unit has been approved by the division.

<p>N89°46'54"E 2621.50 FT</p> <p>NW CORNER SEC. 35 LAT. = 32.3562897°N LONG. = 104.1687069°W NMSP EAST (FT) N = 493389.08 E = 592171.42</p> <p>NOTE: LATITUDE AND LONGITUDE COORDINATES ARE SHOWN USING THE NORTH AMERICAN DATUM OF 1983 (NAD83). LISTED NEW MEXICO STATE PLANE EAST COORDINATES ARE GRID (NAD83). BASIS OF BEARING AND DISTANCES USED ARE NEW MEXICO STATE PLANE EAST COORDINATES MODIFIED TO THE SURFACE.</p>		<p>N89°46'54"E 2621.50 FT</p> <p>NE CORNER SEC. 35 LAT. = 32.3563213°N LONG. = 104.1517314°W NMSP EAST (FT) N = 493409.05 E = 597413.19</p>	
<p>DNF</p> <p>DNF</p>		<p>DNF</p> <p>DNF</p>	
<p>2689.63 FT</p> <p>2689.63 FT</p>		<p>2676.56 FT</p> <p>2676.82 FT</p>	
<p>SW CORNER SEC. 35 LAT. = 32.3415144°N LONG. = 104.1692810°W NMSP EAST (FT) N = 488013.71 E = 592002.38</p>		<p>SE CORNER SEC. 35 LAT. = 32.3416125°N LONG. = 104.1521061°W NMSP EAST (FT) N = 488057.97 E = 597306.54</p>	
<p>S89°31'09"W 2653.30 FT</p>		<p>S89°31'30"W 2652.26 FT</p>	

SMEDLEY FEE 1
ELEV. = 3084.2'
LAT. = 32.3475254°N (NAD83)
LONG. = 104.1567515°W
NMSP EAST (FT)
N = 490206.61
E = 595868.34

SURFACE LOCATION

BOTTOM OF HOLE
LAT. = 32.3478516°N
LONG. = 104.1593468°W
NMSP EAST (FT)
N = 490323.95
E = 595066.68

2285'

1481'

2285'

1481'

N81°40'21"W 810.39'

17 OPERATOR CERTIFICATION
I hereby certify that the information contained herein is true and complete to the best of my knowledge and belief, and that this organization either owns a working interest or unleased mineral interest in the land including the proposed bottom hole location or has a right to drill this well at this location pursuant to a contract with an owner of such a mineral or working interest, or to a voluntary pooling agreement or a compulsory pooling order heretofore entered by the division.

Jerry W. Sherrell 12-11-2014
Signature Date

Jerry W. Sherrell
Printed Name

jerrys@mec.com
E-mail Address

18 SURVEYOR CERTIFICATION
I hereby certify that the well location shown on this plat was plotted from field notes of actual surveys made by me or under my supervision, and that the same is true and correct to the best of my belief.

DECEMBER 9, 2014
Date of Survey

[Signature]
Signature and Seal of Professional Surveyor

Certificate Number 112797
SURVEY NO. 2951A

NOTE: LATITUDE AND LONGITUDE COORDINATES ARE SHOWN USING THE NORTH AMERICAN DATUM OF 1983 (NAD83). LISTED NEW MEXICO STATE PLANE EAST COORDINATES ARE GRID (NAD83). BASIS OF BEARING AND DISTANCES USED ARE NEW MEXICO STATE PLANE EAST COORDINATES MODIFIED TO THE SURFACE

[illegible]

FROM THE INTERSECTION OF CR 705 (HEPLER) AND CR 708 (PORTER) GO WEST ON CR 705 FOR APPROX. 0.3 OF A MILE. GO SOUTH ON 10' DIRT ROAD FOR APPROX. 500', GO WEST APPROX. 16.5' TO THE NORTHEAST CORNER OF PAD.

LOCATED 2161 FT. FROM THE SOUTH LINE
AND 1481 FT. FROM THE EAST LINE OF
SECTION 35, TOWNSHIP 22 SOUTH,
RANGE 27 EAST, N.M.P.M.
EDDY COUNTY, STATE OF NEW MEXICO

SURVEY NO. 2951A

MADRON SURVEYING, INC. 301 SOUTH CANAL
(575) 234-3341

CARLSBAD, NEW MEXICO

[illegible]

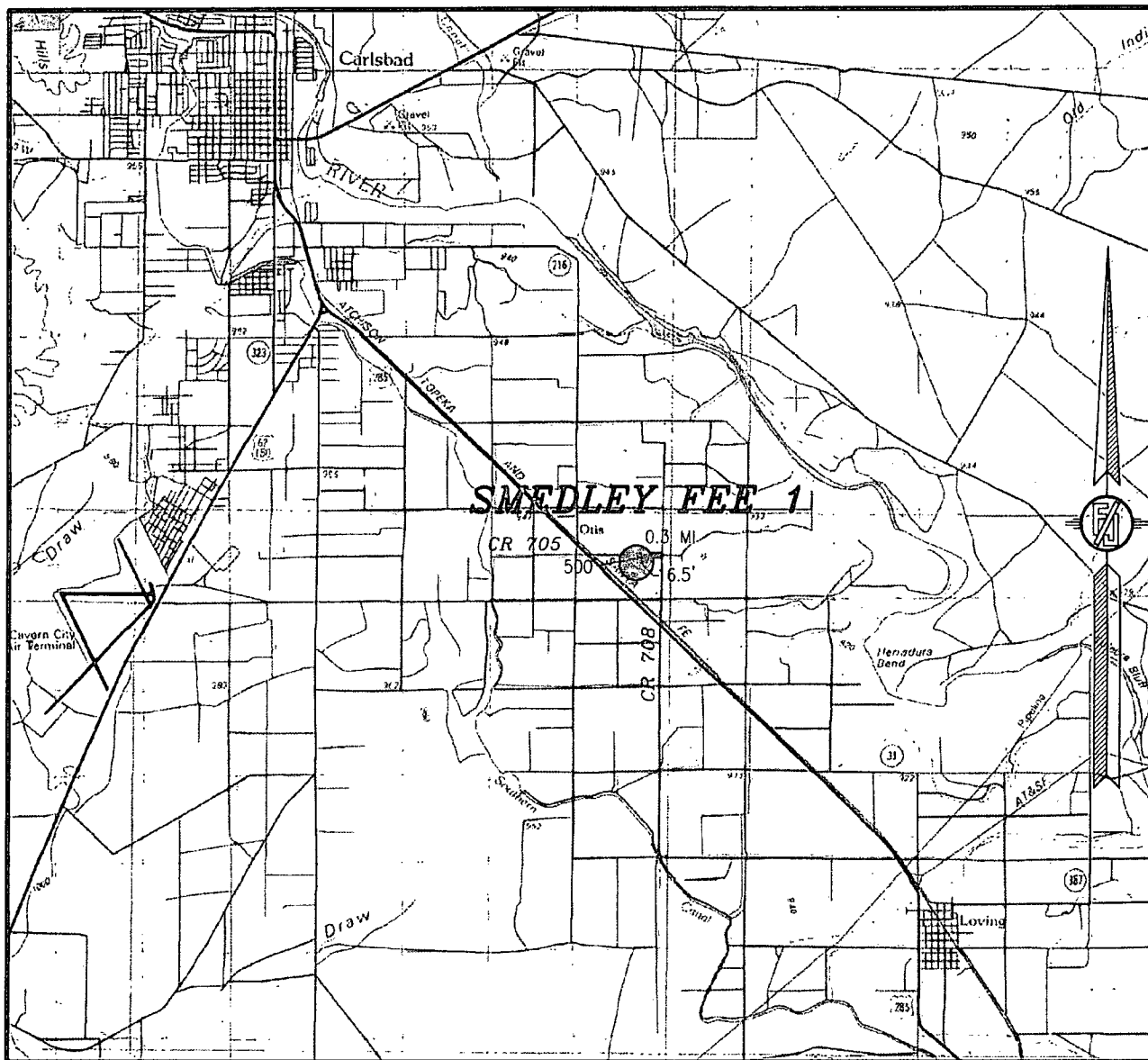
NOT TO SCALE

DECEMBER 8, 2014

SURVEY NO. 2951A

MADRON SURVEYING, INC. 301 SOUTH CANAL (575) 234-3341 CARLSBAD, NEW MEXICO

SECTION 35, TOWNSHIP 22 SOUTH, RANGE 27 EAST, N.M.P.M.
EDDY COUNTY, STATE OF NEW MEXICO
VICINITY MAP



DISTANCES IN MILES

NOT TO SCALE

DIRECTIONS TO LOCATION

FROM THE INTERSECTION OF CR 705 (HEPLER) AND CR 708 (PORTER) GO WEST ON CR 705 FOR APPROX. 0.3 OF A MILE. GO SOUTH ON 10' DIRT ROAD FOR APPROX. 500'. GO WEST APPROX. 16.5' TO THE NORTHEAST CORNER OF PAD.

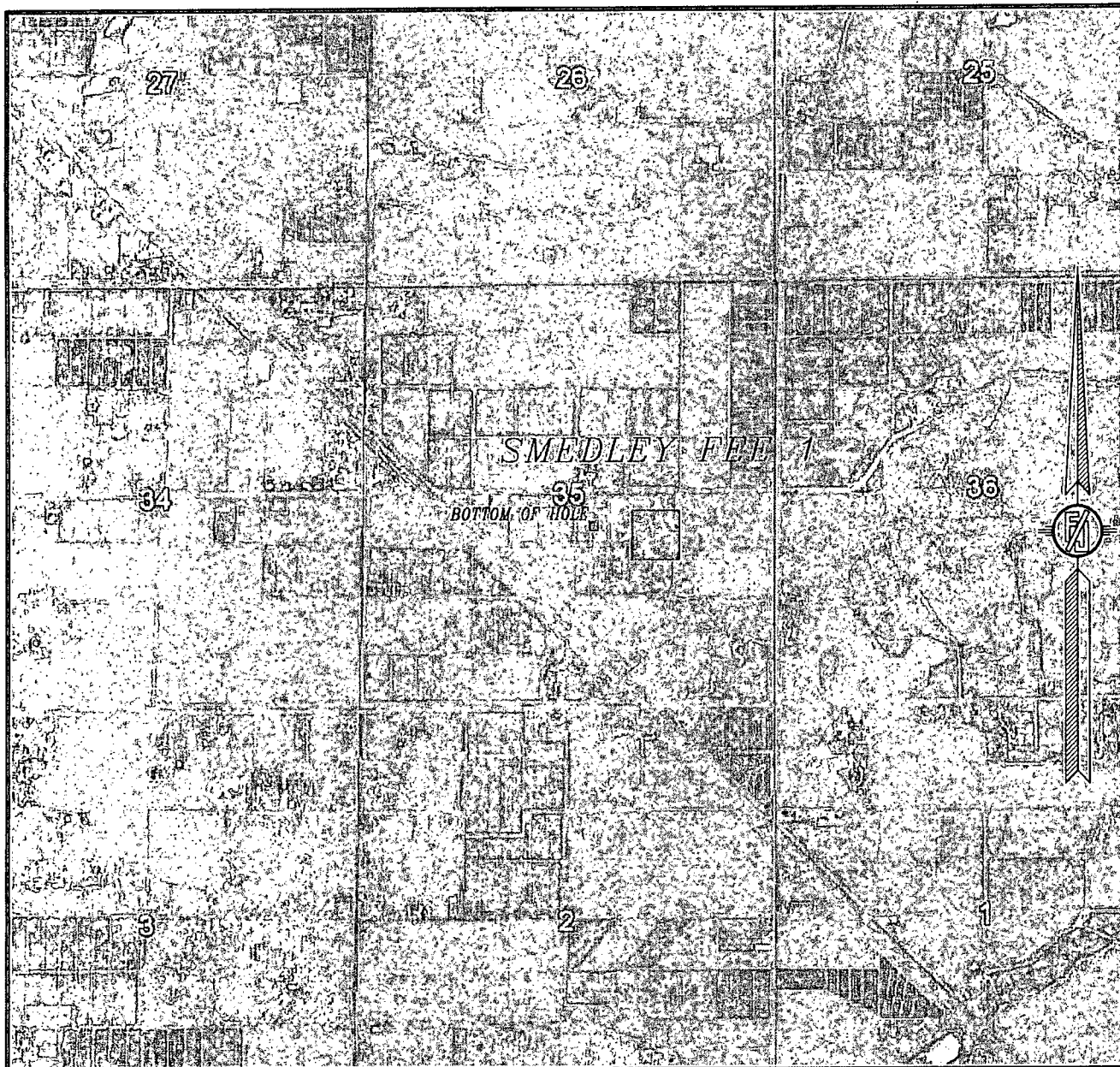
MACK ENERGY CORPORATION
SMEDLEY FEE 1
LOCATED 2161 FT. FROM THE SOUTH LINE
AND 1481 FT. FROM THE EAST LINE OF
SECTION 35, TOWNSHIP 22 SOUTH,
RANGE 27 EAST, N.M.P.M.
EDDY COUNTY, STATE OF NEW MEXICO

DECEMBER 8, 2014

SURVEY NO. 2951A

MADRON SURVEYING, INC. 301 SOUTH CANAL (575) 234-3341 CARLSBAD, NEW MEXICO

SECTION 35, TOWNSHIP 22 SOUTH, RANGE 27 EAST, N.M.P.M.
EDDY COUNTY, STATE OF NEW MEXICO
AERIAL PHOTO



NOT TO SCALE
AERIAL PHOTO:
GOOGLE EARTH
APRIL 2013

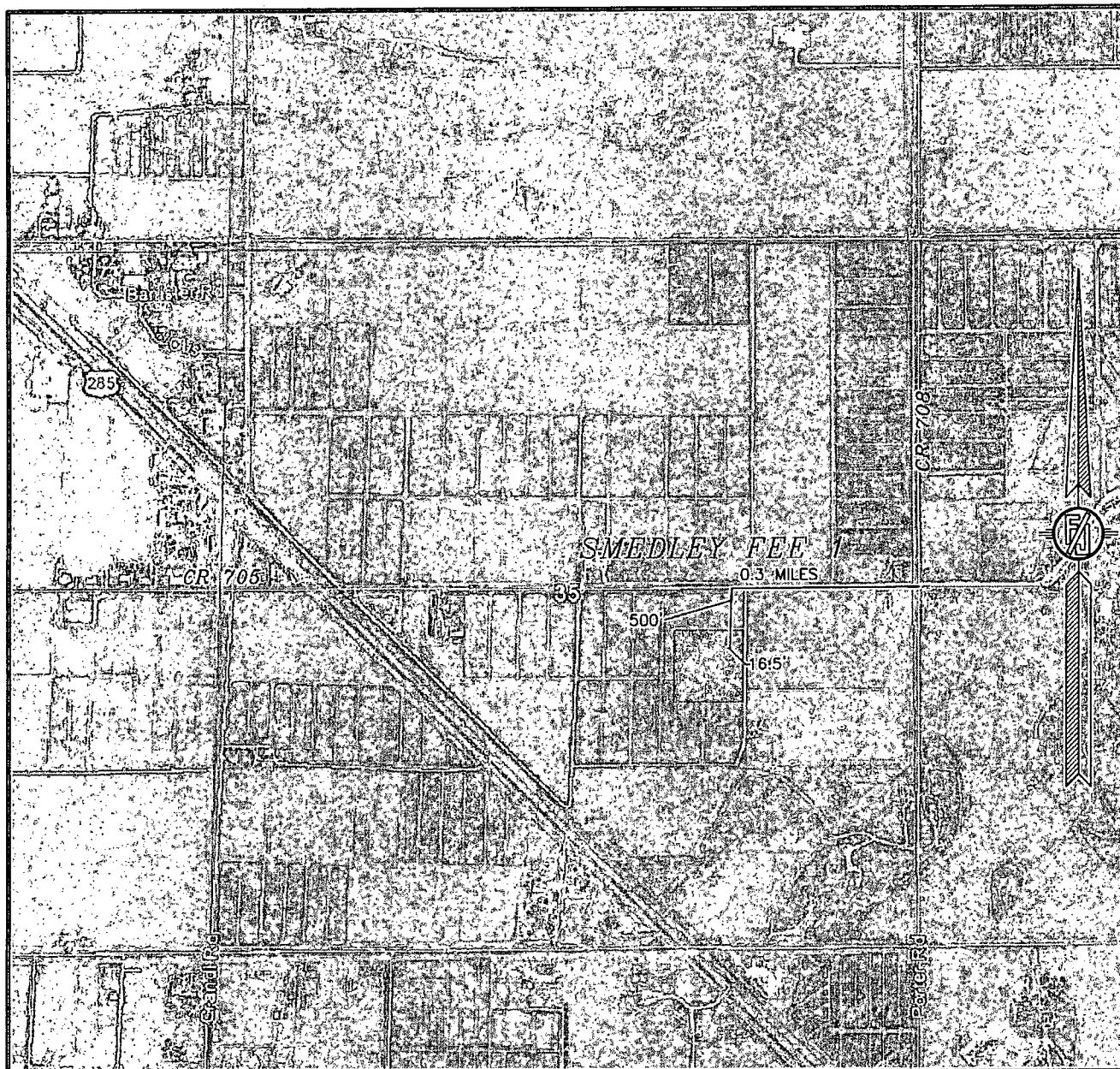
MACK ENERGY CORPORATION
SMEDLEY FEE 1
LOCATED 2161 FT. FROM THE SOUTH LINE
AND 1481 FT. FROM THE EAST LINE OF
SECTION 35, TOWNSHIP 22 SOUTH,
RANGE 27 EAST, N.M.P.M.
EDDY COUNTY, STATE OF NEW MEXICO

DECEMBER 8, 2014

SURVEY NO. 2951A

MADRON SURVEYING, INC. 301 SOUTH CANAL CARLSBAD, NEW MEXICO
(575) 234-3341

SECTION 35, TOWNSHIP 22 SOUTH, RANGE 27 EAST, N.M.P.M.
EDDY COUNTY, STATE OF NEW MEXICO
ACCESS AERIAL ROUTE MAP



NOT TO SCALE
AERIAL PHOTO:
GOOGLE EARTH
APRIL 2013

MACK ENERGY CORPORATION
SMEDLEY FEE 1
LOCATED 2161 FT. FROM THE SOUTH LINE
AND 1481 FT. FROM THE EAST LINE OF
SECTION 35, TOWNSHIP 22 SOUTH,
RANGE 27 EAST, N.M.P.M.
EDDY COUNTY, STATE OF NEW MEXICO

DECEMBER 8, 2014

SURVEY NO. 2951A

MADRON SURVEYING, INC. 301 SOUTH CANAL CARLSBAD, NEW MEXICO
(575) 234-3341