

DISTRICT I
1625 N. French Dr., Hobbs, NM 88240
Phone (575) 393-6161 Fax: (575) 393-0720

DISTRICT II
811 S. First St., Artesia, NM 88210
Phone (575) 746-1289 Fax: (575) 746-0720

DISTRICT III
1000 Rio Brazos Rd., Aztec, NM 87410
Phone (505) 354-8178 Fax: (505) 354-0170

DISTRICT IV
1220 S. St. Francis Dr., Santa Fe, NM 87505
Phone (505) 476-3400 Fax: (505) 476-3402

State of New Mexico
Energy, Minerals and Natural Resources Department

Form C-102
Revised August 1, 2011

Submit one copy to appropriate
District Office

OIL CONSERVATION DIVISION
1220 South St. Francis Dr.
Santa Fe, New Mexico 87505

WELL LOCATION AND ACREAGE DEDICATION PLAT

AMENDED REPORT

API Number 20-015-42554	Pool Code 96830	Pool Name Artesia; Glorietta - Yeso
Property Code 313568	Property Name OUTLAW STATE	Well Number 2
OGRID No. 873	Operator Name APACHE CORPORATION	Elevation 3698

Surface Location

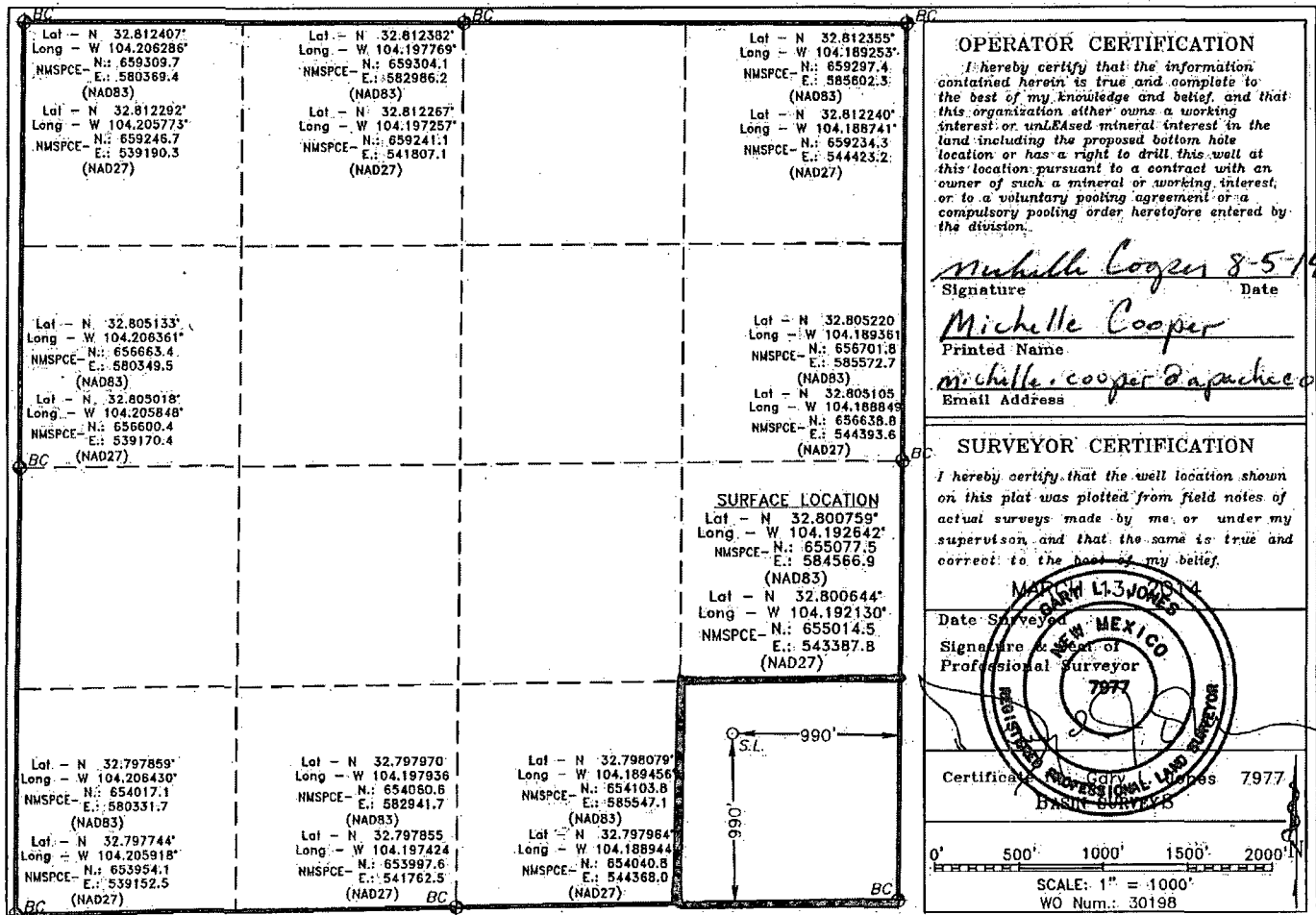
UL or lot No.	Section	Township	Range	Lot Idn	Feet from the	SOUTH/South line	Feet from the	East/WEST LINE	County
P	29	17 S	28 E		990	SOUTH	990	EAST	EDDY

Bottom Hole Location If Different From Surface

UL or lot No.	Section	Township	Range	Lot Idn	Feet from the	SOUTH/South line	Feet from the	East/WEST LINE	County

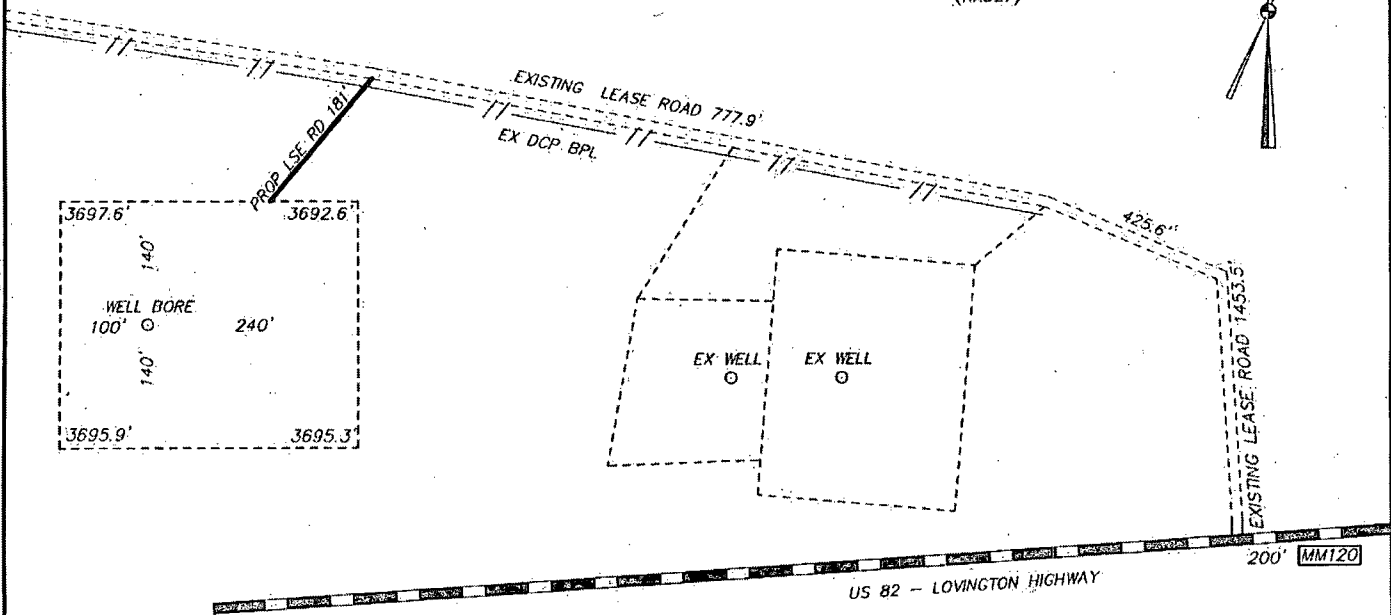
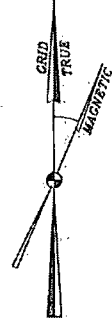
Dedicated Acres 40	Joint or Infill	Consolidation Code	Order No.
------------------------------	-----------------	--------------------	-----------

NO ALLOWABLE WILL BE ASSIGNED TO THIS COMPLETION UNTIL ALL INTERESTS HAVE BEEN CONSOLIDATED;
OR A NON-STANDARD UNIT HAS BEEN APPROVED BY THE DIVISION

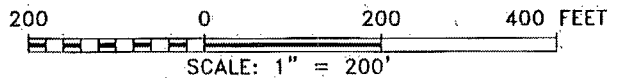


SECTION 29, TOWNSHIP 17 SOUTH, RANGE 28 EAST. N.M.P.M.,
 EDDY COUNTY, NEW MEXICO.

APACHE CORPORATION
 OUTLAW STATE #2
 ELEV. = 3698'
 Lat - N 32.800759°
 Long - W 104.192642°
 NMSPC - N.: 655077.5
 E.: 584566.9
 (NAD83)
 Lat - N 32.800644°
 Long - W 104.192130°
 NMSPC - N.: 655014.5
 E.: 543387.8
 (NAD27)



ARTESIA, NM IS ±12 MILES TO THE NORTHWEST OF LOCATION.



Directions to Location:

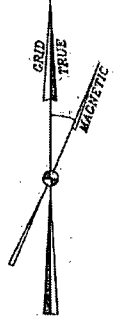
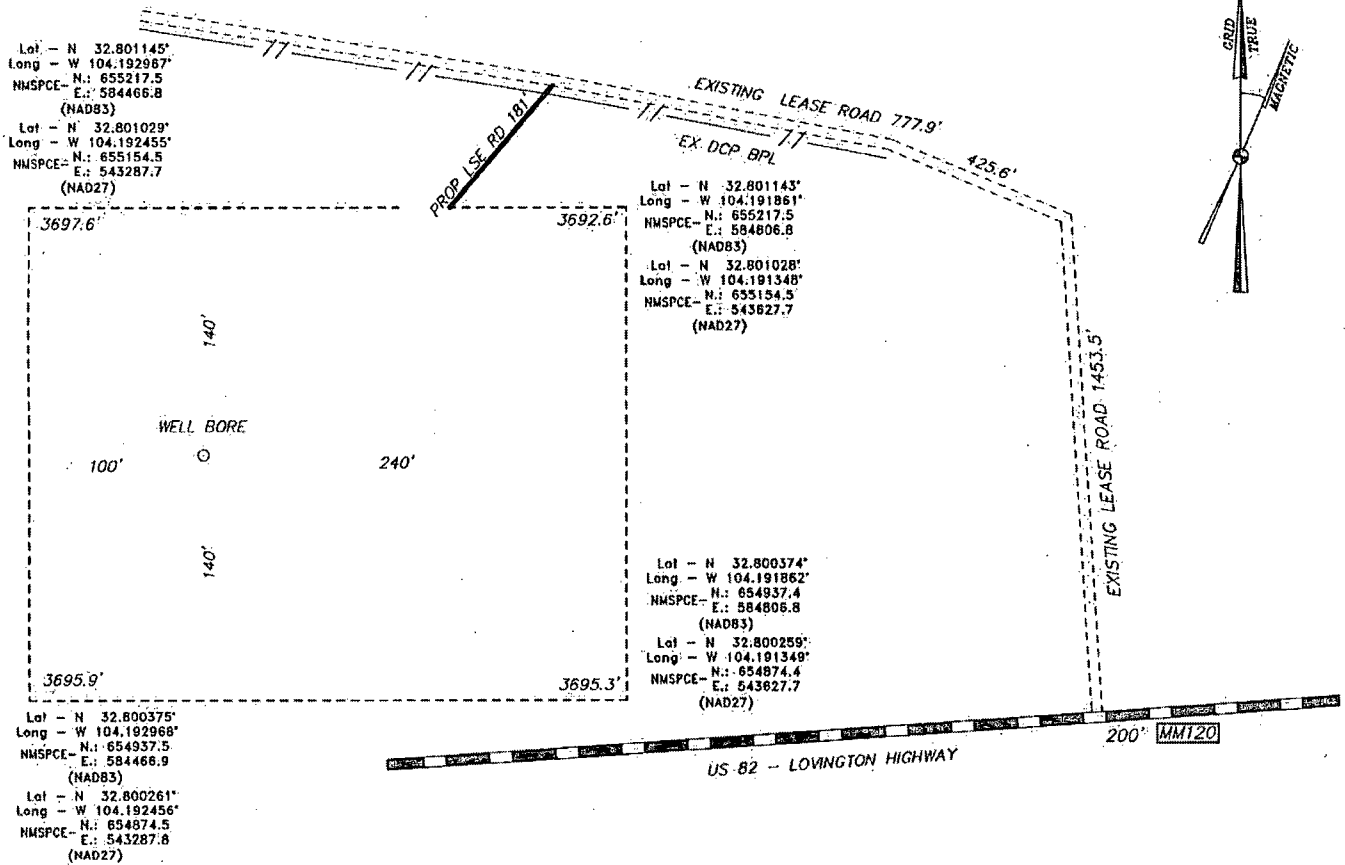
FROM LOCO HILLS GO WEST ON US HWY 82,
 APPROX 200 FEET WEST OF MILE MARKER 120 TURN
 NORTHWEST ON LEASE ROAD 0.5 MILES TO
 PROPOSED LEASE ROAD ON LEFT.



focused on excellence
 in the oilfield
 P.O. Box 1786
 1120 N. West County Rd.
 Hobbs, New Mexico 88241
 (575) 393-7316 - Office
 (575) 392-2206 - Fax
 basin-surveys.com

REF: OUTLAW STATE #2 / WELL PAD TOPO
THE OUTLAW STATE #2 LOCATED 990' FROM THE SOUTH LINE AND 990' FROM THE EAST LINE OF SECTION 29, TOWNSHIP 17 SOUTH, RANGE 28 EAST. N.M.P.M., EDDY COUNTY, NEW MEXICO.

SECTION 29, TOWNSHIP 17 SOUTH, RANGE 28 EAST. N.M.P.M.,
 EDDY COUNTY, NEW MEXICO.



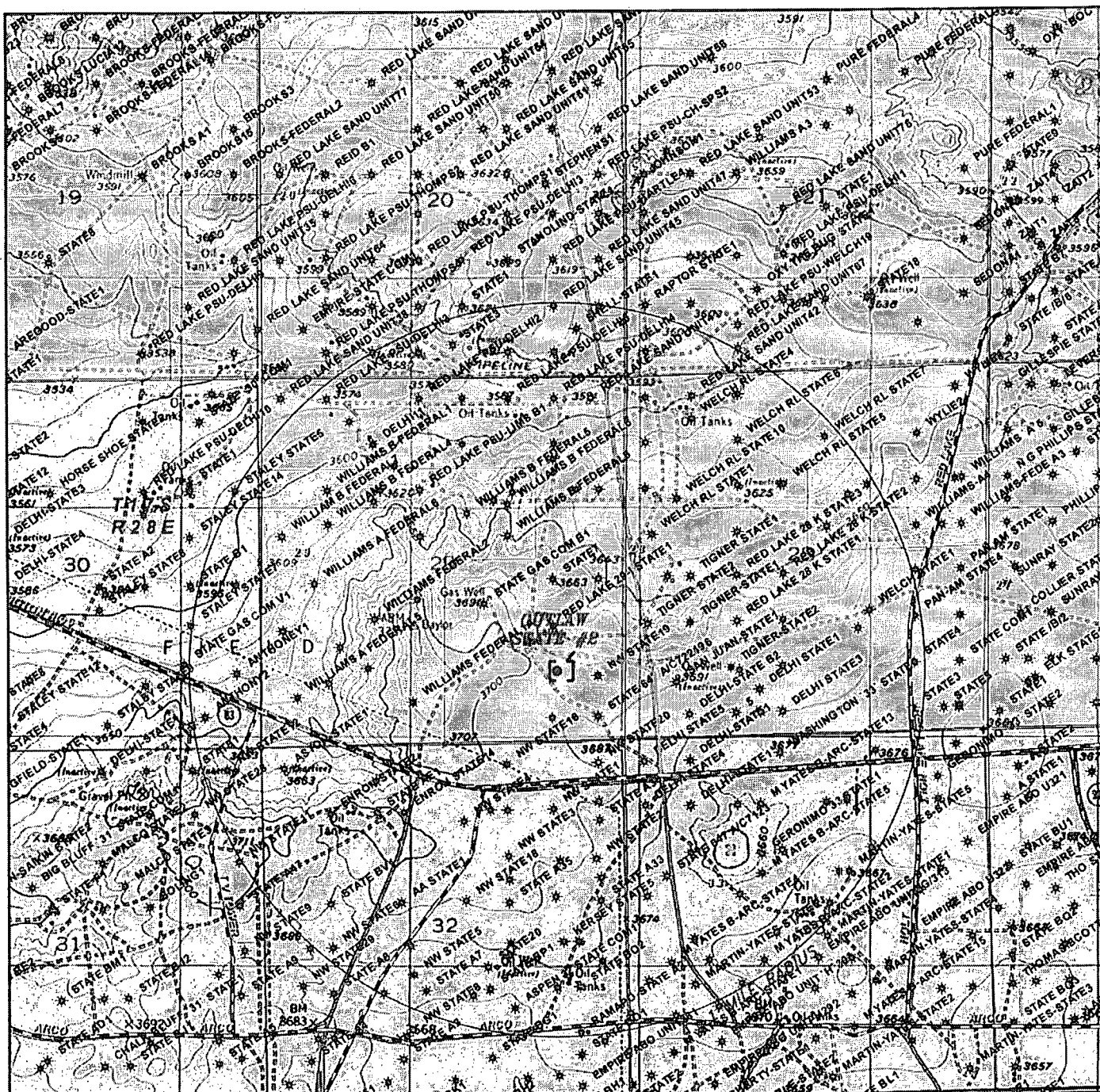
Apache
 EXPLORING WHAT'S POSSIBLE

REF: OUTLAW STATE #2 / WELL PAD TOPO

THE OUTLAW STATE #2 LOCATED 990' FROM
 THE SOUTH LINE AND 990' FROM THE EAST LINE OF
 SECTION 29, TOWNSHIP 17 SOUTH, RANGE 28 EAST.
 N.M.P.M., EDDY COUNTY, NEW MEXICO.

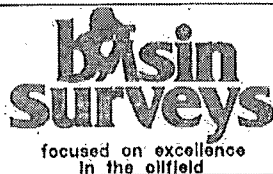


P.O. Box 1786 (575) 393-7316 - Office
 1120 N. West County Rd. (575) 392-2206 - Fax
 Hobbs, New Mexico 88241 basin-surveys.com

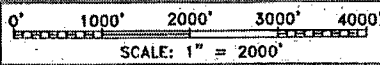


OUTLAW STATE #2

Located 990' FSL and 990' FEL
 Section 29, Township 17 South, Range 28 East,
 N.M.P.M., Eddy County, New Mexico.



P.O. Box 1786
 1120 N. West County Rd.
 Hobbs, New Mexico 88241
 (575) 393-7316 - Office
 (575) 392-2206 - Fax
 basinsurveys.com

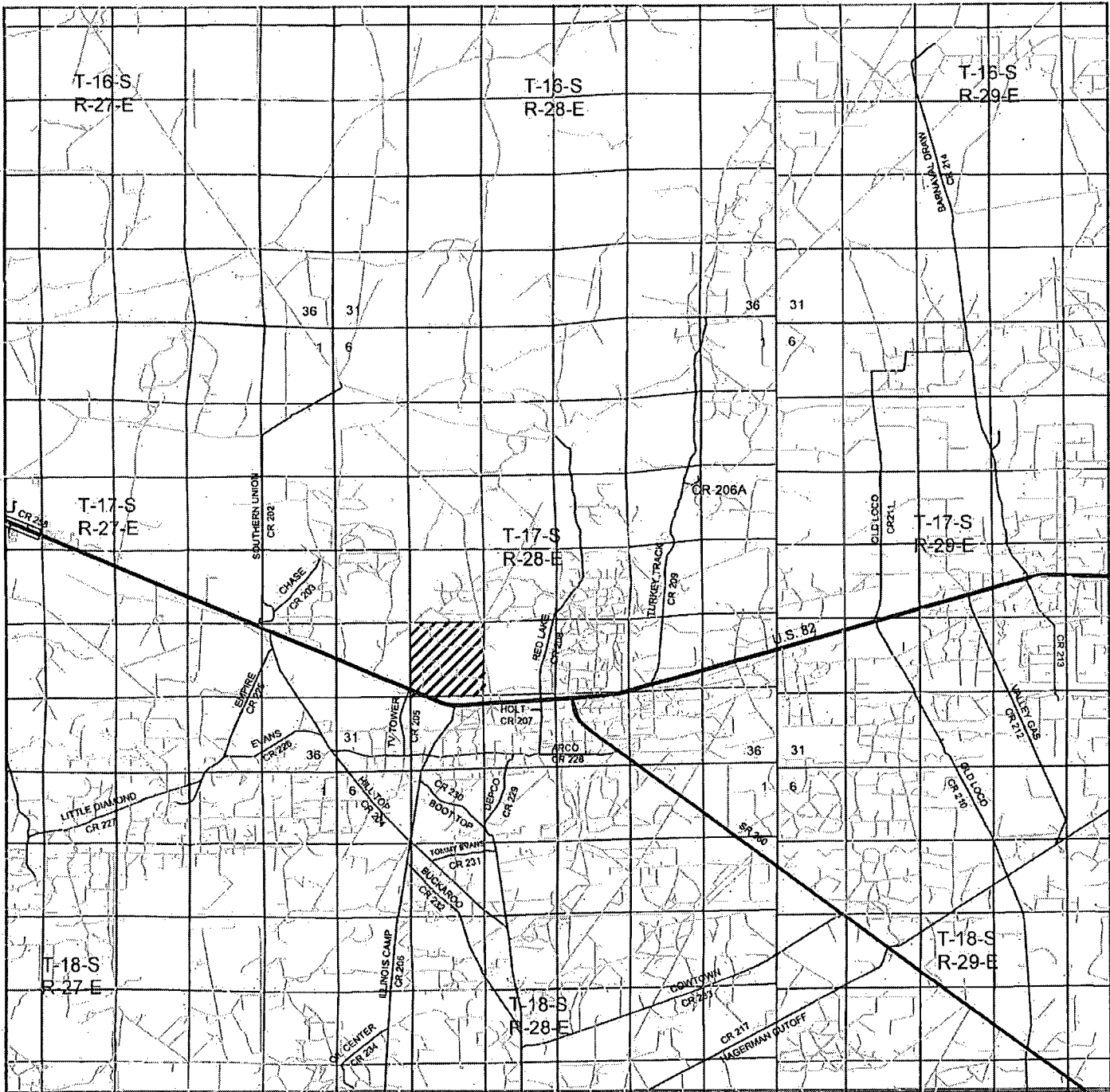


W.O. Number: KAN 30198
 Survey Date: 03-13-2014

YELLOW TINT - USA LAND
 BLUE TINT - STATE LAND
 NATURAL COLOR - FEE LAND



EXPLORING WHAT'S POSSIBLE



OUTLAW STATE #2

Located 990' FSL and 990' FEL
 Section 29, Township 17 South, Range 28 East,
 N.M.P.M., Eddy County, New Mexico.

basin surveys
 focused on excellence
 in the oilfield

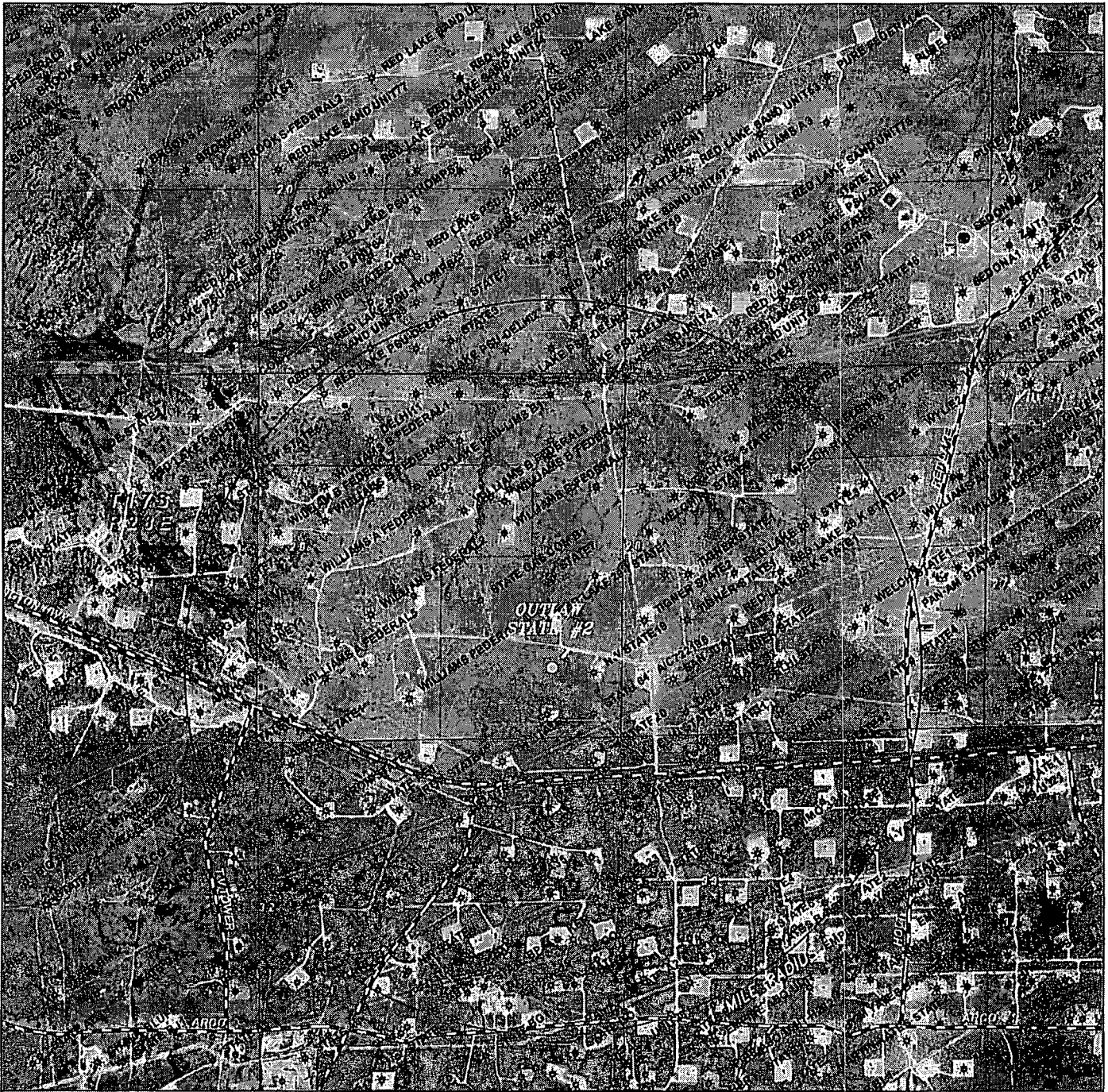
P.O. Box 1786
 1120 N. West County Rd.
 Hobbs, New Mexico 88241
 (575) 393-7316 - Office
 (575) 392-2206 - Fax
 basinsurveys.com

0 1 MI 2 MI 3 MI 4 MI
 SCALE: 1" = 2 MILES

W.O. Number: KAN 30198
 Survey Date: 03-13-2014

YELLOW TINT - USA LAND
 BLUE TINT - STATE LAND
 NATURAL COLOR - FEE LAND

Apache
 EXPLORING WHAT'S POSSIBLE

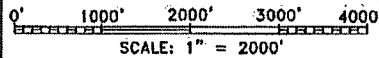


OUTLAW STATE #2

Located 990' FSL and 990' FEL
 Section 29, Township 17 South, Range 28 East,
 N.M.P.M., Eddy County, New Mexico.



P.O. Box 1786
 1120 N. West County Rd.
 Hobbs, New Mexico 88241
 (575) 393-7316 - Office
 (575) 392-2206 - Fax
 basinsurveys.com



W.O. Number: KAN 30198

Survey Date: 03-13-2014

YELLOW TINT - USA LAND
 BLUE TINT - STATE LAND
 NATURAL COLOR - FEE LAND

