

**DEVON ENERGY PRODUCTION COMPANY LP**

Well Name: RUSSELL 8 FEDERAL #1		Field: BURTON FLAT EAST	
Location: 760' FNL & 660' FWL; SEC 8-T20S-R29E		County: EDDY	State: NM
Elevation: 3296' KB; 3279' GL; 17' KB to GL		Spud Date: 12/27/00	Compl Date: 3/17/01
API#: 30-015-31392	Prepared by: Ronnie Slack	Date: 3/20/14	Rev: 4/28/14

**CURRENT WELLBORE**

26" Hole  
20", 94#, X56, @ 415'  
 Cmt'd w/976 sx to surface

17-1/2" hole  
13-3/8", 48#, H40, STC, @ 1,336'  
 Cmt'd w/976 sx to surface

12-1/4" hole  
8-5/8", 32#, J55, LTC, @ 3,515'  
 Cmt'd w/1350 sx to surface

TOC @ 5614' (CBL) →

DV Tool @ 9,009'

ATOKA  
 10,812' - 10,816'  
 10,866' - 10,882'  
 10,886' - 10,902'

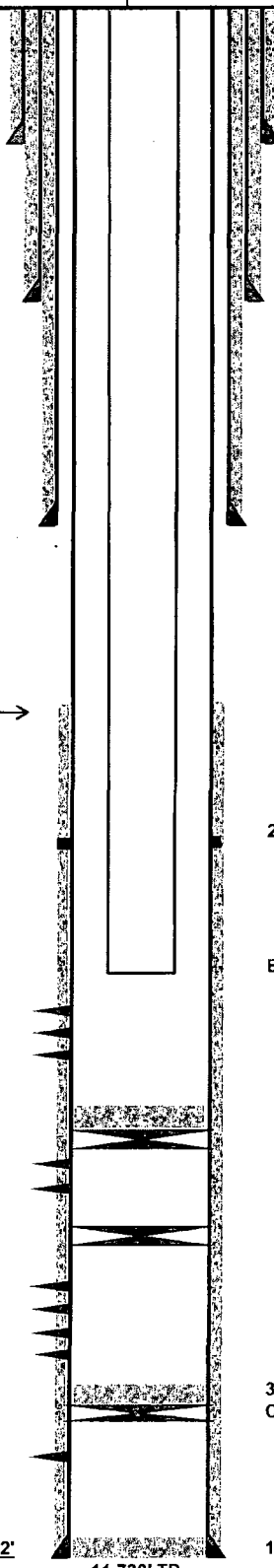
MORROW  
 11,255' - 11,258' (11/27/12)  
 11,264' - 11,270' (11/27/12)

MORROW  
 11,313'-11,336' (3/01)  
 11,345'-11,353' (3/01)  
 11,367'-11,382' (3/01)  
 11,434'-11,440' (11/07)  
 11,313'-11,526' (11/07)

3/01-acid fraced 11313-382' w/1000 gals & 40k# 20/40  
 11/07-acidized 11434-11526 w/2000 gals 7.5%

MORROW (2/01)  
 11,625'-11,633'  
 acidized 11625-633' w/1000 gals

7-7/8" Hole  
5-1/2", 17# L80 suface to 4,257', 15.5# J55 4,257' to 10,012'  
& 17# L80 From 10,012' to TD @ 11,730'  
 Cmt'd w/1350 Sx. TOC @ 5614' (CBL)



**NM OIL CONSERVATION**  
 ARTESIA DISTRICT  
 FEB 18 2015  
 RECEIVED

2-3/8", 4.7#, L80 production tubing

EOT @ 10,790'

35' cement, 11,102' PBD  
 CIBP @ 11,137'

CIBP @ 11,290'

35' cement, 11,580' PBD  
 CIBP @ 11,615'

11,682' PBD