

Submit 1 Copy To Appropriate District Office

State of New Mexico Energy, Minerals and Natural Resources

Form C-103 Revised July 18, 2013

District I - (575) 393-6161
1625 N. French Dr., Hobbs, NM 88240
District II - (575) 748-1265
811 S. First St., Artesia, NM 88210
District III - (505) 334-6178
1000 Rio Brazos Rd., Aztec, NM 87410
District IV - (505) 476-3460
1220 S. St. Francis Dr., Santa Fe, NM 87505

NM OIL CONSERVATION
ARTESIA DISTRICT OIL CONSERVATION DIVISION
MAR 05 2015
1220 South St. Francis Dr.
Santa Fe, NM 87505

WELL API NO. 30-005-64212
5. Indicate Type of Lease STATE [X] FEE []
6. State Oil & Gas Lease No. V0-9290
7. Lease Name or Unit Agreement Name Kobe 22
8. Well Number #1Y
9. OGRID Number 26307
10. Pool name or Wildcat Wolflake; San Andres, S.

SUNDRY NOTICES AND REPORTS ON WELLS
(DO NOT USE THIS FORM FOR PROPOSALS TO DRILL OR TO DEEPEN OR PLUG BACK TO A DIFFERENT RESERVOIR. USE "APPLICATION FOR PERMIT" (FORM C-101) FOR SUCH PROPOSALS.)
1. Type of Well: Oil Well [X] Gas Well [] Other []
2. Name of Operator Jalapeno Corporation
3. Address of Operator P.O. Box 1608 Albuquerque, NM 87103
4. Well Location Unit Letter E : 2190 feet from the North line and 280 feet from the West line Section 22 Township 9-S Range 27-E NMPM County Chaves
11. Elevation (Show whether DR, RKB, RT, GR, etc.)

12. Check Appropriate Box to Indicate Nature of Notice, Report or Other Data

NOTICE OF INTENTION TO:
PERFORM REMEDIAL WORK [] PLUG AND ABANDON []
TEMPORARILY ABANDON [] CHANGE PLANS []
PULL OR ALTER CASING [] MULTIPLE COMPL []
DOWNHOLE COMMINGLE []
CLOSED-LOOP SYSTEM []
OTHER: []
SUBSEQUENT REPORT OF:
REMEDIAL WORK [] ALTERING CASING []
COMMENCE DRILLING OPNS. [] P AND A []
CASING/CEMENT JOB [X]
OTHER: []

13. Describe proposed or completed operations. (Clearly state all pertinent details, and give pertinent dates, including estimated date of starting any proposed work). SEE RULE 19.15.7.14 NMAC. For Multiple Completions: Attach wellbore diagram of proposed completion or recompletion.

11/7/15 Set 8 5/8" 24# surface casing to 419 feet. Cemented casing with 400 sacks of class "C" +2% CALC2 cement. Pumped all cement and circulated to surface Shut down and woc.

Spud Date: 10/7/14

Rig Release Date:

I hereby certify that the information above is true and complete to the best of my knowledge and belief.

SIGNATURE [Signature] TITLE Vice President DATE 2/27/2015

Type or print name H. Emmons Yates III E-mail address: eyates@jalapenocorp.com PHONE: 505-242-2050

For State Use Only APPROVED BY: [Signature] TITLE Dist. P. Supervisor DATE 3/13/15

Conditions of Approval (if any):

PACESSETTER

PRESSURE PUMPING

CEMENTING - ACIDIZING

		Customer Name: Jalapeno		Field Receipt		C2014-0205	
		Lease Name: Kobe 22 St		Service Specialist		Nathan Hall	
		Well #: 1Y		County:		Chaves	
		Type of Job: 8 5/8 Surface		Customer Representative			
		Date:					
		Casing size: 8 5/8					
		Casing weight: 24					
		casing BBI/Inf: .0636					
		Total Depth: 421					
		Total Pipe: 419					
		Shoe Joint: 43					
		Displacement: 23.9 bbls		Maximum:		500 Psi	
		Pre-Flush: 10 bbls					
		Sks.		Cement Additives			
Lead Cement:		550		Class C + 2% CACL2			
Cmt. Wt.		14.80		Yield		1.33	
		Gal/sk		6.33		Mixing Water: 82.89 :bbls	
				Total Ft. ³ :		731.50 ft. ³	
Total sks:		550 sks.		Total Bbls. Cmt.:		130.28 :Bbls	
Total Ft. ³ :		732 ft. ³		Total Mix Water:		82.89 :Bbls	
				Total Water for Job:		200.00 :Bbls	

Time	Injection Rate:		Job Pressures		Job Log Remarks:
	Rate:	Bbls in	Tbg psi.	Csg psi	
400am					Arrive in yard
500am					Load equipment - Paperwork - Pretrip equipment
530am					Safety meeting
600am					Leave yard
800am					Arrive on location
801am					Safety meeting
805am					Spot trucks
810am					Rig up iron
915am					Safety meeting
940am	5				Start fresh water spacer to catch circulation
1003am	5	60			Continue pumping
1014am		100			Shutdown - Wait for water
1120am					Water ready
1125am	3.5			100	Start cement 300 sacks of Class C + 2% CACL2 at 14.8 ppg
	3.5			100	Sampled at 14.8 ppg
	3.5			100	Switch
	3.5			100	Sampled at 14.8 ppg
1152am	3.5			50	Drop plug on the fly - Start displacement
1201pm	1.5	20		50	Displacement - slow rate
1203pm		23.9		550	Bump plug - 500 psi over
1205pm					Check floats (held)
					Wait 2 hours to top off well
200pm					Rig up to the top of casing
205pm					Pour 2 bags of Calcuim Chloride (100lbs) down the annulus of surface casing
210pm					Batch up cement to 16 ppg
215pm	2				Start downhole with 35 sacks of Class C + 2% CACL2 to 16ppg
219pm	2	7			Start downhole with 65 sacks of Class C + 2% CACL2 to 14.8ppg
227pm		15			Shutdown - Circulated 1 bbls to surface 4.2 sacks
230pm					Wash up to pit
240pm					Safety meeting
245pm					Rig down
300pm					Pacesetter released from location
Service Specialist					Customer Representative
Nathan Hall					X

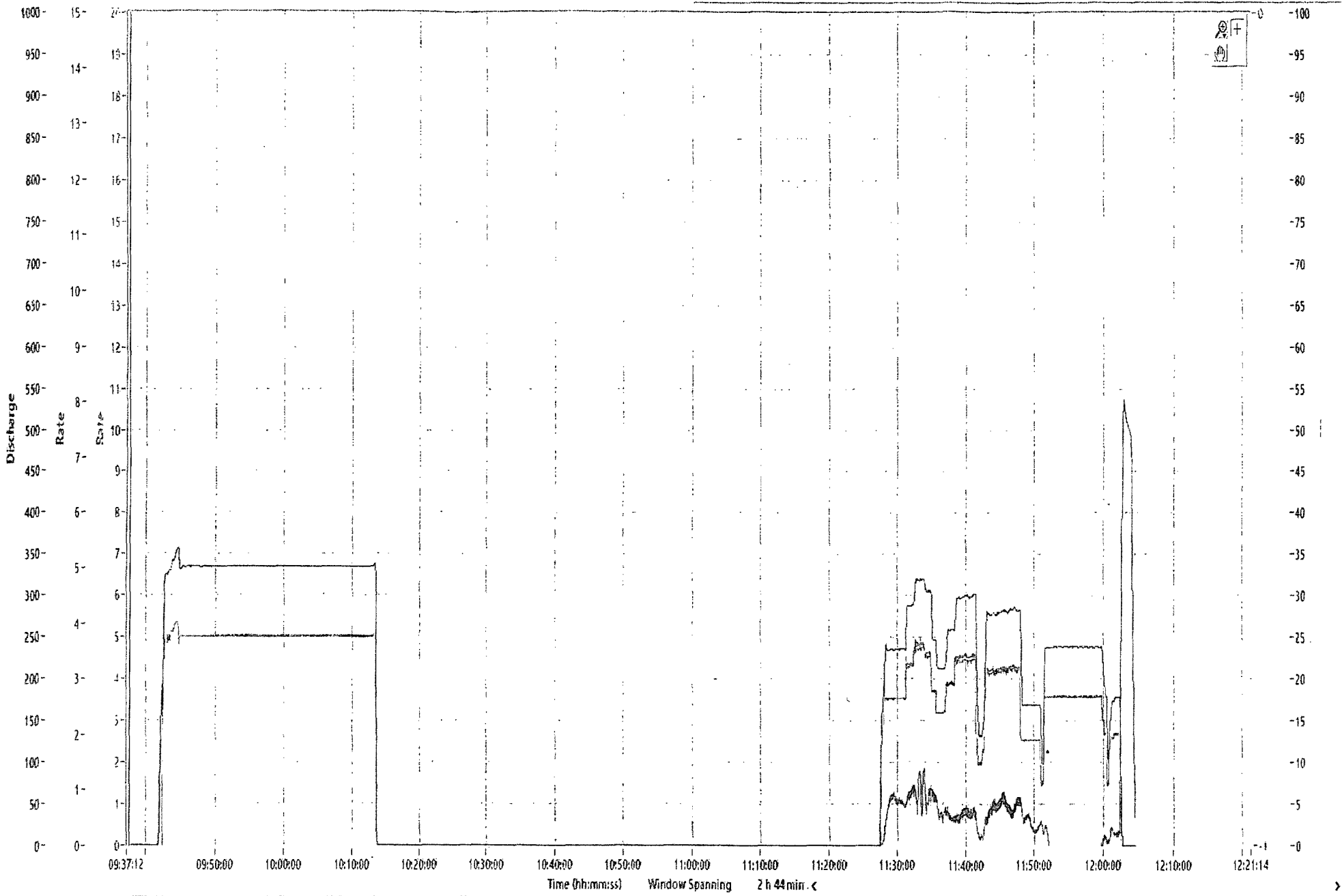
-64.9

0.0

0.0

NaN

NaN



Refresh Graph

Time (hh:mm:ss) Window Spanning 2 h 44 min <

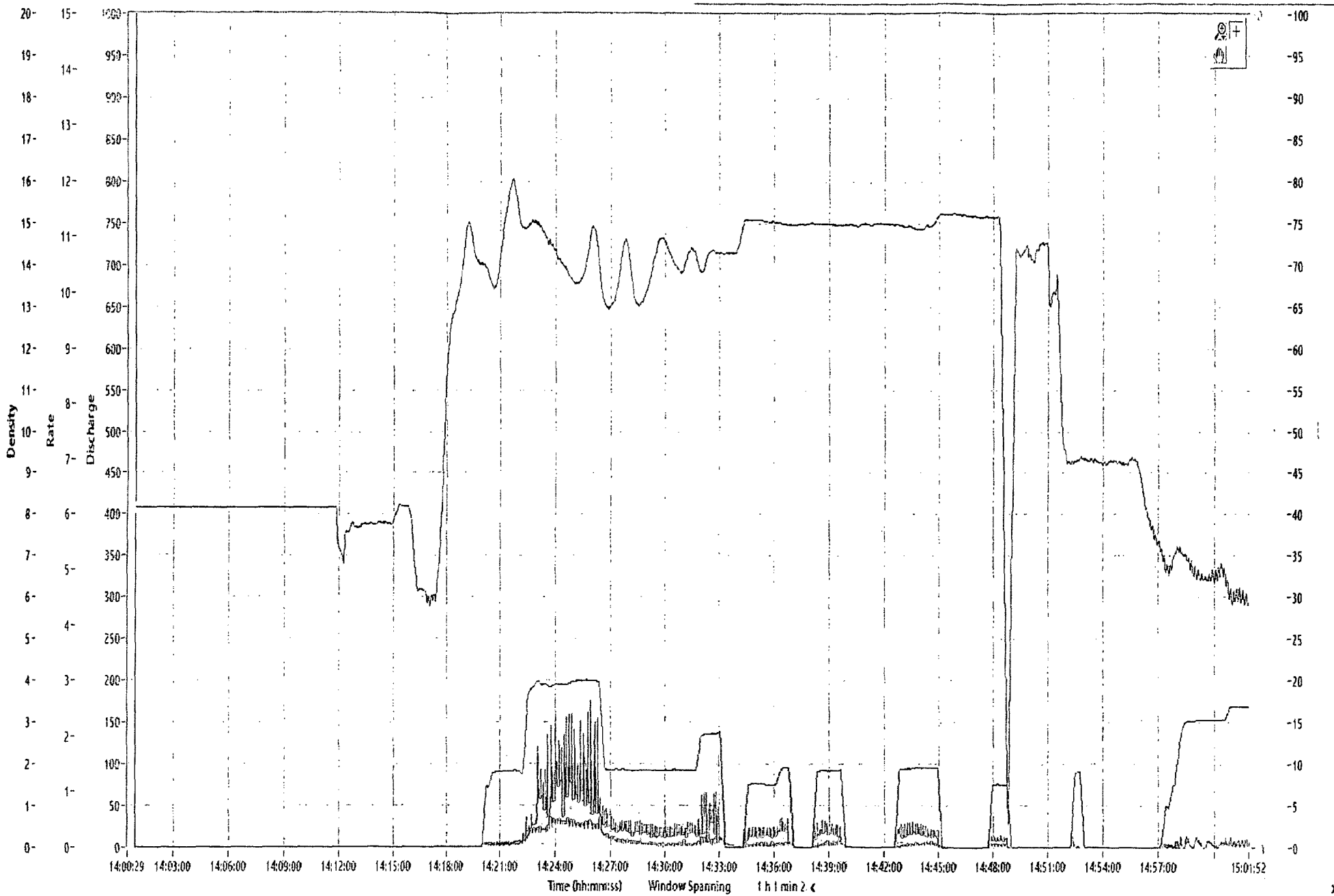
8.2

0.0

-19.0

NaN

NaN



Refresh Graph