

Submit 1 Copy To Appropriate District Office
 District I - (575) 393-6161
 1625 N. French Dr., Hobbs, NM 88240
 District II - (575) 748-1283
 811 S. First St., Artesia, NM 88210
 District III - (505) 334-6178
 1000 Rio Brazos Rd., Aztec, NM 87410
 District IV - (505) 476-3460
 1220 S. St. Francis Dr., Santa Fe, NM 87505

State of New Mexico
 Energy, Minerals and Natural Resources

Form C-103
 Revised July 18, 2013

OIL CONSERVATION DIVISION
 1220 South St. Francis Dr.
 Santa Fe, NM 87505

SUNDRY NOTICES AND REPORTS ON WELLS (DO NOT USE THIS FORM FOR PROPOSALS TO DRILL OR TO DEEPEN OR PLUG BACK TO A DIFFERENT RESERVOIR. USE "APPLICATION FOR PERMIT" (FORM C-101) FOR SUCH PROPOSALS.) 1. Type of Well: Oil Well <input checked="" type="checkbox"/> Gas Well <input type="checkbox"/> Other <input type="checkbox"/>		WELL API NO. 30-015-26797
2. Name of Operator Mewbourne Oil Company		5. Indicate Type of Lease STATE <input checked="" type="checkbox"/> FEE <input type="checkbox"/>
3. Address of Operator PO Box 5270, Hobbs NM 88241		6. State Oil & Gas Lease No. L-6425
4. Well Location Unit Letter <u>O</u> : <u>990</u> feet from the <u>South</u> line and <u>1980</u> feet from the <u>East</u> line Section <u>30</u> Township <u>24S</u> Range <u>29E</u> NMPM <u>Eddy</u> County		7. Lease Name or Unit Agreement Name Ruby 30 State
11. Elevation (Show whether DR, RKB, RT, GR, etc.) 2917' GL		8. Well Number 1
9. OGRID Number 14744		10. Pool name or Wildcat Wildcat Morrow 97565

12. Check Appropriate Box to Indicate Nature of Notice, Report or Other Data

NOTICE OF INTENTION TO:		SUBSEQUENT REPORT OF:	
PERFORM REMEDIAL WORK <input type="checkbox"/>	PLUG AND ABANDON <input checked="" type="checkbox"/>	REMEDIAL WORK <input type="checkbox"/>	ALTERING CASING <input type="checkbox"/>
TEMPORARILY ABANDON <input type="checkbox"/>	CHANGE PLANS <input type="checkbox"/>	COMMENCE DRILLING OPNS. <input type="checkbox"/>	P AND A <input type="checkbox"/>
PULL OR ALTER CASING <input type="checkbox"/>	MULTIPLE COMPL <input type="checkbox"/>	CASING/CEMENT JOB <input type="checkbox"/>	
DOWNHOLE COMMINGLE <input type="checkbox"/>		OTHER: <input type="checkbox"/>	
CLOSED-LOOP SYSTEM <input type="checkbox"/>			
OTHER <input type="checkbox"/>			

13. Describe proposed or completed operations. (Clearly state all pertinent details, and give pertinent dates, including estimated date of starting any proposed work). SEE RULE 19.15.7.14 NMAC. For Multiple Completions: Attach wellbore diagram of proposed completion or recompletion.

Please review the attached plugging procedure for the above captioned well.

NM OIL CONSERVATION
 ARTESIA DISTRICT

MAR 24 2015

RECEIVED

Approved for plugging of well bore only.
 Liability under bond is retained pending receipt of C-103 (Subsequent Report of Well Plugging) which may be found at OCD Web Page under Forms. www.emnrd.state.nm.us/oed.

CONDITIONS OF APPROVAL ATTACHED

Approval Granted providing work is

Completed by

3/24/2015

Rig Release Date:

I hereby certify that the information above is true and complete to the best of my knowledge and belief.

SIGNATURE Jackie Lathan TITLE Regulatory DATE 03/24/15

Type or print name Jackie Lathan E-mail address: jlathan@mewbourne.com PHONE: 575-393-5905

For State Use Only

APPROVED BY: [Signature] TITLE Dist R Supervisor DATE 3/24/2015

Conditions of Approval (if any):

* See Attached COA's

COMPLETION PROCEDURE

Submitted By: E. McMath

Wellname: Ruby 30 State Com #1

Location: 990' FSL & 1980' FEL Sec 30, T24S, R20E 29E
Eddy Co, NM

Date: 1/12/2015

Prod Csg Set: <u>10120'</u> <u>7" 23#, 7" 26#, & 7" 32#</u>	Inter Csg Set <u>2760'</u>
Prod Csg: <u>N-80 & S95</u>	Inter Csg <u>9 5/8" 36# K-55</u>
PBTD: <u>5100'</u>	TOC @: <u>Surface</u>
Perfs: <u>3312'-3472'</u>	Tbg: <u>2 7/8" 6.5# J-55</u>
TOC @: <u>1200'</u>	Tbg Set: <u>3440'</u>

Procedure:

1. Test anchors. MIRU BCM. ND WH & NU BOP. POOH w/tbg & LD 7 jts.
2. RIH w/CIBP & tbg.
3. Set CIBP @ 3250' (perfs @ 3312'-3472').
4. Spot 25 sks Class "C" cmt on top of CIBP.
5. POOH to 3125 and spot 13 bbl balanced mud pill.
6. POOH to 2810' and Spot 25 sks Class "C" cmt plug.
7. POOH to 2685' and spot 55 bbl balanced mud pill.
8. POOH to 1235' and spot 25 sks Class C plug.
9. POOH to 1110' and spot 18 bbl balanced mud pill.
10. POOH to 650' and spot 25 sks Class C plug.
11. POOH to 525' and spot 16 bbl balanced mud pill.
12. POOH to 125' and circ cmt to surface with 25 sks. POOH and top off as needed.
13. ND BOP & RDMO BCM.
14. Cut off WH & install dry hole marker @ ground level.

Mewbourne Oil Company

Well Name: Ruby 30 State Com #1 - Proposed Schematic

Spud Date: 8/08/1991

Surface Csg

13 3/4" 48#
Set @ 598'
400 sks "Lite C" +
200 sks "C" (88 sks to pit)

Intermediate Csg

9 3/4" 36# K-55
Set @ 2,760'
1300 sks 65/35 Poz Mix + 200 sks "C"
(276 sks to pit)

Production Csg

7" 23#, 26#, 29#, 32# N-80 & S-95
Set @ 10,120'
275 sks 50/50 Poz Mix "H"
TOC @ 1200'

Top of Delaware @ 2770'

CIBP Set @ 3250' (capped w/120' cmt)

CIBP Set @ 5100' (capped w/35' cmt)

Top of Bone Spring @ 6491'

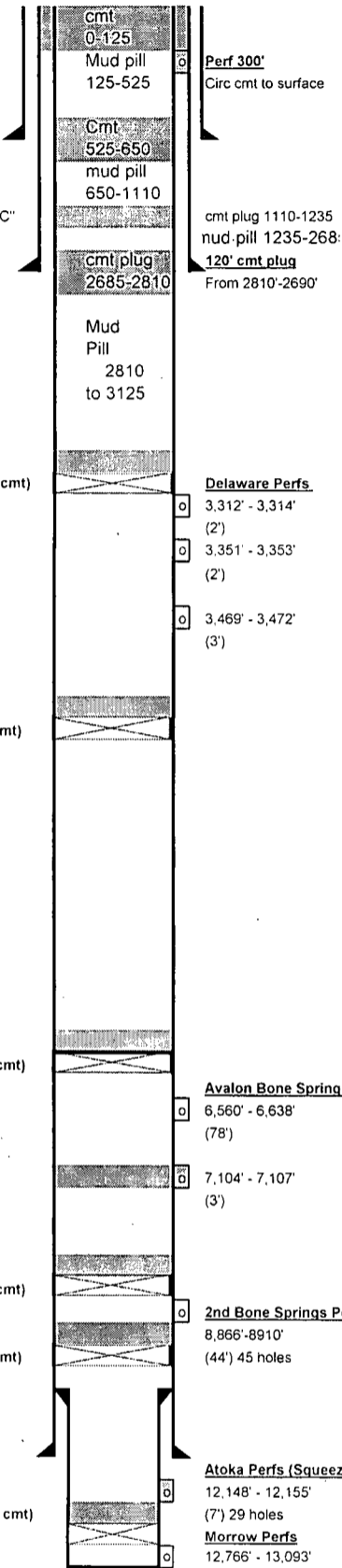
CIBP Set @ 6,510' (capped w/35' cmt)

CIBP Set @ 8,800' (capped w/35' cmt)

CIBP Set @ 9200' (capped w/35' cmt)

Liner

4 1/2" 13.5# S-95
Set @ 13,400'
TOL @ 9,716'
400 sks Premium H,
Squeezed w/370 sks Premium H
CIBP Set @ 12,216' (capped w/35' cmt)



TD @ 13,400'

8/9/1991	Drilled 17 1/2" hole to 598'. Ran 14 jts of 13 3/4", 48# casing set at 598'.
	Cemented with 400 sks Lite C, tailed in with 200 sks Class C. Circulated 88 sks to pit
8/16/1991	Drilled 12 1/2" hole to 2,760'. Ran 64 jts 9 3/4", 36#, K-55 casing set at 2,760'. Cemented with 1300 sks 65/35 Poz Mix, tailed in with 200 sks Class C. Circulated 276 sks to pit.
9/1/1991	Drilled 8 3/4" hole to 10,120'. Ran 241 jts 7", 23#, 26#, 29#, and 32#, N-80 and S-95 casing set at 10, 120'. Cemented with 275 sks 50/50 Poz Mix 'H'.
10/10/1991	Drilled 6" hole to 13,400'. Ran 83 jts of 4 1/2", 13.5#, S-95 liner set @ 13,400'. Cemented with 400 sks Premium 'H'. Set retainer at 9,540' and squeezed top of liner with 370 sks Premium 'H'. Reversed out 14 sks.
11/5/1991	Perforated Atoka with 1-11/16" thru tubing gun from 12,148' - 12,155', 4SPF, 29 holes.
2/1/1996	Squeeze cement existing Atoka perfs 12, 148' - 12, 155'. Perforate Morrow formation 12, 766' - 13,093'.
11/20/1996	Set CIBP with 35' cement at 12, 216'. Set CIBP at 9,200' with 35' cement. Perf Bone Spring from 8,866' - 8,910' with 1 SPF with 4" csg gun (45 holes). Frac Bone Spring perfs 8,866' - 8,910'.
11/19/2003	Set CIBP with 10' cement 8,800'. Perf squeeze holes at 7,104' - 7,107'. TOC in 7" at 6,976'. TOC between 7" and 9 3/4" at 1,200'.
12/1/2003	Perf the Avalon Bone Spring formation from 6,560' - 6,638'.
12/3/2003	Treat perfs with 3000 gal 15% HCL.
12/11-16/2003	Frac Avalon Bone Spring perfs.
	Missing paperwork on drill out of CIBP at 8,800'
2/1/2011	Set CIBP with 35' cement at 8,816'. Set CIBP with 35' cement at 6,510'. Set CIBP with 35' cement at 5,100'. Perf at 3,312' - 3,314', 3,351' - 3,353', 3,469' - 3,472'. 4 SPF (40 holes). Acidize perfs with 3000 gal 15% HCL. Frac perfs with 145,000# sand and 105,000 gal gel.
3/1/2011	PU and RIH with 109 jts 2 3/4" 6.5# J-55 Tbg (3,340').

Mewbourne Oil Company

Well Name: Ruby 30 State Com #1 - Current Schematic

Spud Date: 8/08/1991

Date Updated: 4/22/2013

Surface
 13 1/2" 48#
 Set @ 598'
 400 sks "Lite C" +
 200 sks "C" (88 sks to pit)
Intermediate
 9 3/4" 36# K-55
 Set @ 2,760'
 1300 sks 65/35 Poz Mix + 200 sks "C"
 (276 sks to pit)

Top of Delaware @ 2770'

Production
 7" 23#, 26#, 29#, 32# N-80 & S-95
 Set @ 10,120'
 275 sks 50/50 Poz Mix "H"
 TOC @ 1200'

CIBP Set @ 5100' (capped w/35' cmt)

Top of Bone Spring @ 6491'

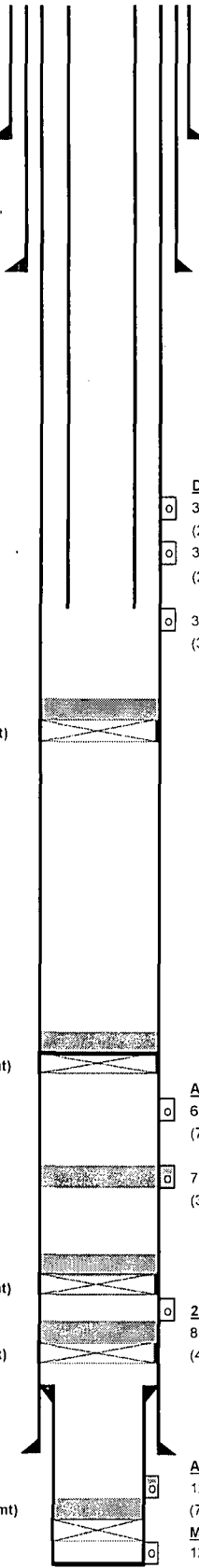
CIBP Set @ 6,510' (capped w/35' cmt)

CIBP Set @ 8,800' (capped w/35' cmt)

CIBP Set @ 9200' (capped w/35' cmt)

Liner
 4 1/2" 13.5# S-95
 Set @ 13,400'
 TOL @ 9,716'
 400 sks Premium H,
 Squeezed w/370 sks Premium H
 CIBP Set @ 12,216' (capped w/35' cmt)

TD @ 13,400'



Delaware Perfs

3,312' - 3,314' (2)
 3,351' - 3,353' (2)
 3,469' - 3,472' (3)

Avalon Bone Springs Perfs

6,560' - 6,638' (78)
 7,104' - 7,107' (3) (Perf Squeezed)
 TOC inside 7" @ 6976'

2nd Bone Springs Perfs

8,866' - 8,910' (44) 45 holes

Atoka Perfs (Squeezed cmt)

12,148' - 12,155' (7) 29 holes

Morrow Perfs

12,766' - 13,093' (327)

8/9/1991	Drilled 17 1/2" hole to 598'. Ran 14 jts of 13 1/2", 48# casing set at 598'.
	Cemented with 400 sks Lite C, tailed in with 200 sks Class C. Circulated 88 sks to pit
8/16/1991	Drilled 12 1/4" hole to 2,760'. Ran 64 jts 9 3/4", 36#, K-55 casing set at 2,760'. Cemented with 1300 sks 65/35 Poz Mix, tailed in with 200 sks Class C. Circulated 276 sks to pit.
9/1/1991	Drilled 8 1/2" hole to 10,120'. Ran 241 jts 7", 23#, 26#, 29#, and 32#, N-80 and S-95 casing set at 10, 120'. Cemented with 275 sks 50/50 Poz Mix 'H'.
10/10/1991	Drilled 6" hole to 13,400'. Ran 83 jts of 4 1/2", 13.5#, S-95 liner set @ 13,400'. Cemented with 400 sks Premium 'H'. Set retainer at 9,540' and squeezed top of liner with 370 sks Premium 'H'. Reversed out 14 sks.
11/5/1991	Perforated Atoka with 1-11/16" thru tubing gun from 12,148' - 12,155', 4SPF, 29 holes.
2/1/1996	Squeeze cement existing Atoka perfs 12, 148' - 12, 155'. Perforate Morrow formation 12, 766' - 13,093'.
11/20/1996	Set CIBP with 35' cement at 12, 216'. Set CIBP at 9,200' with 35' cement. Perf Bone Spring from 8,866' - 8,910' with 1 SPF with 4" csg gun (45 holes). Frac Bone Spring perfs 8,866' - 8,910'.
11/19/2003	Set CIBP with 10' cement 8,800'. Perf squeeze holes at 7,104' - 7,107'. TOC in 7" at 6,976'. TOC between 7" and 9 3/4" at 1,200'.
12/1/2003	Perf the Avalon Bone Spring formation from 6,560' - 6,638'.
12/3/2003	Treat perfs with 3000 gal 15% HCL.
12/11-16/2003	Frac Avalon Bone Spring perfs.
	Missing paperwork on drill out of CIBP at 8,800'
2/1/2011	Set CIBP with 35' cement at 8,816'. Set CIBP with 35' cement at 6,510'. Set CIBP with 35' cement at 5,100'. Perf at 3,312' - 3,314'; 3,351' - 3,353'; 3,469' - 3,472'. 4 SPF (40 holes). Acidize perfs with 3000 gal 15% HCL. Frac perfs with 145,000# sand and 105,000 gal gel.
3/1/2011	PU and RIH with 109 jts 2 7/8" 6.5# J-55 Tbg (3,340').

Tubing Detail:		
109	2 7/8" 6.5# J-55 Tbg	3,440'
	Tubing Set @	3,440'

NEW MEXICO OIL CONSERVATION DIVISION
DISTRICT 2 OFFICE
811 S. FIRST STREET
ARTESIA, NM 88210
(575)748-1283

CONDITIONS OF APPROVAL FOR PLUGGING & ABANDONMENT

Operator: MewDowne

Well Name & Number: Ruby 30 State #1

API #: 30-015-26797

1. Produced water **will not** be used during any part of the plugging & abandonment operation.
2. Notify NMOCD Dist. 2 office at least 24 hrs before beginning work.
3. Closed Loop System is to be used for entire plugging operation. Upon completion, contents of steel pit are to be hauled to a permitted disposal location.
4. Trucking companies being used to haul oilfield waste fluids to a disposal – commercial or private – shall have an approved NMOCD C-133 permit. A copy of this permit shall be available in each truck used to haul waste products. It is the responsibility of the operator, as well as the contractor, to verify that this permit is place prior to performing work. Drivers shall produce a copy upon request of NMOCD Field Inspectors.
5. A subsequent C-103 will serve as notification that the well bore has been plugged ONLY. A C-103 FINAL shall be filed before any bonding can be released on the well. Upon receipt of the Final, an inspection will be performed to verify that the location has been satisfactorily cleaned to NMOCD standards.
6. If work has not begun within 90 days of the approval of this procedure, an extension request must be filed, stating reason that well has not been plugged.
7. Every attempt must be made to clean the well bore out to below the perms, before any plugs can be set, by whatever means possible.
8. **Cement Retainers may not be used.**
9. **Squeeze pressures are not to exceed 500 PSI, unless approval is given by NMOCD.**
10. **Plugs may be combined after consulting with and getting approval from NMOCD.**
11. **Minimum WOC time for tag plugs will be 4 Hrs.**

DATE: 3/24/2015

APPROVED BY: [Signature]

GUIDELINES FOR PLUGGING AND ABANDONMENT

DISTRICT II / ARTESIA

- All cement plugs will be a minimum of 100' in length or a minimum of 25 sacks of cement, whichever is greater.
- Mud laden fluids must be placed between all cement plugs.
- Mud laden fluids must be mixed at 25 sacks of gel per 100 bbls of water.
- A cement plug is required to be set 50' below and 50' above all casing shoes and casing stub plugs. These plugs must be tagged.
- A CIBP with 35' of cement on top may be set in lieu of 100' cement plug.
- A plug as indicated above must be placed within 100' of top perforation. This plug must be tagged.
- Plugs set below and above salt zones must be tagged.
- No more than 2000' is to be allowed between cement plugs in open hole and no more than 3000' in cased hole.
- DV tools are required to have a 100' cement plug set 50' above and below the tool and must be tagged.

- Formations to be isolated with plugs placed at the top of each formation are:
 - Fusselman
 - Devonian
 - Morrow
 - Wolfcamp
 - Bone Spring
 - Delaware
 - Any Salt Section (Plug at top and bottom)
 - Abo
 - Glorieta
 - Yates (this plus is usually at base of salt section)

- If cement does not exist behind casing strings at recommended formation depths, the casing must be cut and pulled with plugs set at these depths or casing must be perforated and cement squeezed behind casing at the formation depths.
- In the R-111-P area (Potash Mine area) a solid cement plug must be set across the salt section. Fluid used to mix the cement shall be saturated with the salts common to the section penetrated and in suitable proportions, but not more than a 3% calcium chloride by weight of cement will be considered the desired mixture whenever possible (50' below and 50' above).