

Submit 1 Copy To Appropriate District Office
District I - (575) 393-6161
1625 N. French Dr., Hobbs, NM 88240
District II - (575) 748-1283
811 S. First St., Artesia, NM 88210
District III - (505) 334-6178
1000 Rio Brazos Rd., Aztec, NM 87410
District IV - (505) 476-3460
1220 S. St. Francis Dr., Santa Fe, NM 87505

State of New Mexico
Energy, Minerals and Natural Resources

Form C-103
Revised August 1, 2011

OIL CONSERVATION DIVISION
1220 South St. Francis Dr.
Santa Fe, NM 87505

WELL API NO. 30-015-38501
5. Indicate Type of Lease STATE FEE X
6. State Oil & Gas Lease No.
7. Lease Name or Unit Agreement Name SIDEWINDER
8. Well Number 002H
9. OGRID Number 229137
10. Pool name or Wildcat WC; BONE SPRING

SUNDRY NOTICES AND REPORTS ON WELLS (DO NOT USE THIS FORM FOR PROPOSALS TO DRILL OR TO DEEPEN OR PLUG BACK TO A DIFFERENT RESERVOIR. USE "APPLICATION FOR PERMIT" (FORM C-101) FOR SUCH PROPOSALS.)	
1. Type of Well: Oil Well X Gas Well Other	
2. Name of Operator COG OPERATING LLC	
3. Address of Operator 600 W. ILLINOIS AVE., MIDLAND, TEXAS 79701	
4. Well Location Unit Letter: D ; 480 feet from the NORTH line and 480 feet from the WEST line Section 32 Township 26S Range 29E NMPM EDDY County	
11. Elevation (Show whether DR, RKB, RT, GR, etc.) 2,994' - GR	

12. Check Appropriate Box to Indicate Nature of Notice, Report or Other Data

NOTICE OF INTENTION TO:

PERFORM REMEDIAL WORK ☐ PLUG AND ABANDON X
TEMPORARILY ABANDON ☐ CHANGE PLANS ☐
PULL OR ALTER CASING ☐ MULTIPLE COMPL ☐
DOWNHOLE COMMINGLE ☐

SUBSEQUENT REPORT OF:

REMEDIAL WORK ☐ ALTERING CASING ☐
COMMENCE DRILLING OPNS. ☐ P AND A
CASING/CEMENT JOB ☐

OTHER: ☐

OTHER:

13. Describe proposed or completed operations. (Clearly state all pertinent details, and give pertinent dates, including estimated date of starting any proposed work). SEE RULE 19.15.7.14 NMAC. For Multiple Completions: Attach wellbore diagram of proposed completion or recompletion.

- 1) SET 5-1/2" CIBP @ 6,400'; PUMP 25 SXS. CMT. @ 6,400'-6,240' (T/B.S.).
- 2) PUMP 25 SXS. CMT. @ 4,400'-4,260' (SPACER PLUG).
- 3) PUMP 50 SXS. CMT. @ 2,745'-2,458' (T/DLWR., 8-5/8" CSG.SHOE, B/SALT); WOC X TAG CMT. PLUG..
- 4) CUT X PULL 5-1/2" CSG. @ 1,500'.
- 5) PUMP 40 SXS. CMT. @ 1,555'-1,445'; WOC X TAG CMT. PLUG.
- 6) PUMP 40 SXS. CMT. @ 508'-408' (13-3/8" CSG.SHOE); WOC X TAG CMT. PLUG.
- 7) MIX X CIRC. TO SURF. 25 SXS. CMT. @ 63'-3'.
- 8) DIG OUT X CUT OFF WELLHEAD 3' B.G.L.; WELD ON STEEL PLATE TO CSGS. X INSTALL DRY HOLE MARKER.

DURING THIS PROCEDURE WE PLAN TO USE THE CLOSED-LOOP SYSTEM W/ A STEEL TANK AND HAUL CONTENTS TO THE REQUIRED DISPOSAL, PER OCD RULE 19.15.17.

Spud Date: <input type="text"/>	Rig Release Date: <input type="text"/>	Approved for plugging of well bore only. Liability under bond is retained pending receipt of C-103 (Subsequent Report of Well Plugging) which may be found at OCD Web Page under Forms. www.emand.state.nm.us/oed .	NM OIL CONSERVATION ARTESIA DISTRICT APR 20 2015
---------------------------------	--	--	--

I hereby certify that the information above is true and complete to the best of my knowledge and belief.

RECEIVED

SIGNATURE David A. Eyler TITLE: AGENT

DATE: 04/014/15

Type or print name: DAVID A. EYLER
For State Use Only

E-mail address: DEYLER@MILAGRO-RES.COM

PHONE: 432.687.3033

APPROVED BY: David A. Eyler TITLE: Dist. Supervisor DATE: 4/27/15
Conditions of Approval (if any): See Attached COAs



CURRENT WELL SKETCH

API: 30-015-38501
SPUD: 11/16/11 @ 03:30 hrs
FRR: 11/26/11 @ 20:00 hrs
RIG: Silver Oak #11

Sidewinder No. 2H
Wildcat
Eddy County, New Mexico

Sec 32, T-26S, R-29E
SHL: 480 FNL & 480 FWL
Sec 32, T-26S, R-29E
BHL: 330 FNL & 330 FEL
GL: 2.994'
KB: 3.012'
ZERO: 18.0' AGL

HOLE SIZE	MW (ppg)	BHST (°F)		EVALUATION
17-1/2"	8.7			No Logs
12-1/4"	10.0			No Logs
7-7/8"	9.1	125		Mud Log

Surface Casing @ 458'
13 3/8" 48# H-40 STC
Circulated 67 sx cement.

Intermediate Casing @ 2,634'
8 5/8" 32 J-55 STC
Circulated 11 sx cement.

KOP @ 6.431'
EOC @ 7.214' (6.913' TVD)
EOL @ 11.200'

Avg TVD in Lateral - 6.957'

(202) JTS. 2-7/8" J-55
9 GLV'S @ 1902, 2815,
3400', 3925', 4417',
4909', 5400', 5925',
6416'

2-7/8" X 5-1/2" BIG BORE PKR.
w/ ON/OFF TOOL @ 6617'

Production Casing @ 11,197'
5-1/2" 17# P-110 LTC w/ 1750 SXS.
Wet shoe floor equipment.

Marker joint @ 6.304' CMT. NOT CIRC.
EST. TOC @ 1550' (CBL)

Updated by	SV
Date:	12/28/2011

updated DAE
04/13/15

T/SALT ~ 797'
B/SALT ~ 2508'
T/DLWR. ~ 2695'
T/B.S. ~ 6399'



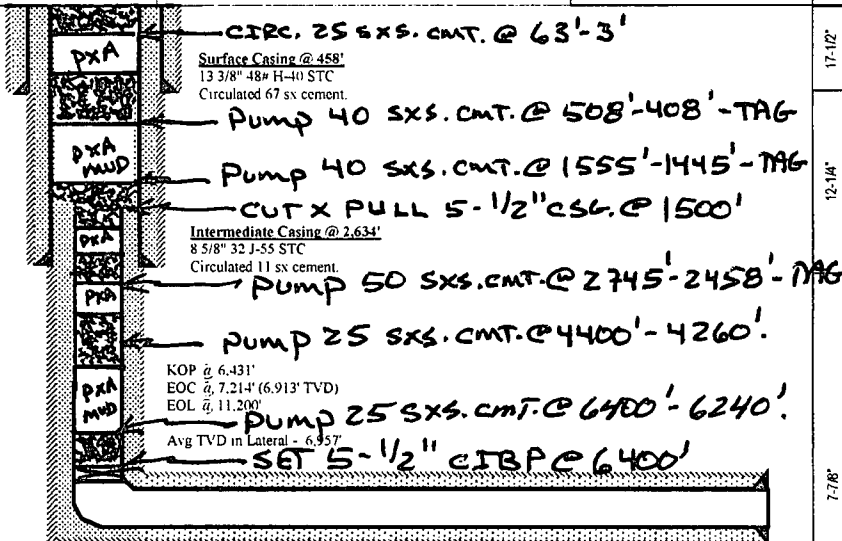
CURRENT WELL SKETCH

API: 30-015-38501
SPUD: 11/16/11 @ 03:30 hrs
FRR: 11/26/11 @ 20:00 hrs
RIG: Silver Oak #11

Sidewinder No. 2H
Wildcat
Eddy County, New Mexico

Sec 32, T-26S, R-29E
SHL: 480 FNL & 480 FWL
Sec 32, T-26S, R-29E
BHL: 330 FNL & 330 FEL
GL: 2.994'
KB: 3.012'
ZERO: 18.0' AGL

HOLE SIZE	RM (ppg)	BHST (#F)	EVALUATION
17-1/2"	8.7		No Logs
12-1/4"	10.0		No Logs
10.0			
7-7/8"	9.1	125	Mud Log



Production Casing @ 11,197'
5-1/2" 17# P-110 LTC
Wet shoe float equipment
Marker joint @ 6,304'

Updated by: SV
Date: 12/28/2011

DAS 04/14/15

NEW MEXICO OIL CONSERVATION DIVISION
DISTRICT 2 OFFICE
811 S. FIRST STREET
ARTESIA, NM 88210
(575)748-1283

CONDITIONS OF APPROVAL FOR PLUGGING & ABANDONMENT

Operator: LOG

Well Name & Number: Sidewinder 2H

API #: 30-015-38501

1. Produced water **will not** be used during any part of the plugging & abandonment operation.
2. Notify NMOCD Dist. 2 office at least 24 hrs before beginning work.
3. Closed Loop System is to be used for entire plugging operation. Upon completion, contents of steel pit are to be hauled to a permitted disposal location.
4. Trucking companies being used to haul oilfield waste fluids to a disposal – commercial or private – shall have an approved NMOCD C-133 permit. A copy of this permit shall be available in each truck used to haul waste products. It is the responsibility of the operator, as well as the contractor, to verify that this permit is place prior to performing work. Drivers shall produce a copy upon request of NMOCD Field Inspectors.
5. A subsequent C-103 will serve as notification that the well bore has been plugged ONLY. A C-103 FINAL shall be filed before any bonding can be released on the well. Upon receipt of the Final, an inspection will be performed to verify that the location has been satisfactorily cleaned to NMOCD standards.
6. If work has not begun within 90 days of the approval of this procedure, an extension request must be filed, stating reason that well has not been plugged.
7. Every attempt must be made to clean the well bore out to below the perfs, before any plugs can be set, by whatever means possible.
8. **Cement Retainers may not be used.**
9. **Squeeze pressures are not to exceed 500 PSI, unless approval is given by NMOCD.**
10. **Plugs may be combined after consulting with and getting approval from NMOCD.**
11. **Minimum WOC time for tag plugs will be 4 Hrs.**

DATE: 4/27/15

APPROVED BY: [Signature]

GUIDELINES FOR PLUGGING AND ABANDONMENT

DISTRICT II / ARTESIA

- All cement plugs will be a minimum of 100' in length or a minimum of 25 sacks of cement, whichever is greater.
- Mud laden fluids must be placed between all cement plugs.
- Mud laden fluids must be mixed at 25 sacks of gel per 100 bbls of water.
- A cement plug is required to be set 50' below and 50' above all casing shoes and casing stub plugs. These plugs must be tagged.
- A CIBP with 35' of cement on top may be set in lieu of 100' cement plug.
- A plug as indicated above must be placed within 100' of top perforation. This plug must be tagged.
- Plugs set below and above salt zones must be tagged.
- No more than 2000' is to be allowed between cement plugs in open hole and no more than 3000' in cased hole.
- DV tools are required to have a 100' cement plug set 50' above and below the tool and must be tagged.
- Formations to be isolated with plugs placed at the top of each formation are:
 - Fusselman
 - Devonian
 - Morrow
 - Wolfcamp
 - Bone Spring
 - Delaware
 - Any Salt Section (Plug at top and bottom)
 - Abo
 - Glorieta
 - Yates (this plug is usually at base of salt section)
- If cement does not exist behind casing strings at recommended formation depths, the casing must be cut and pulled with plugs set at these depths or casing must be perforated and cement squeezed behind casing at the formation depths.
- In the R-111-P area (Potash Mine area) a solid cement plug must be set across the salt section. Fluid used to mix the cement shall be saturated with the salts common to the section penetrated and in suitable proportions, but not more than a 3% calcium chloride by weight of cement will be considered the desired mixture whenever possible (50' below and 50' above).