

DISTRICT I

1825 N. French Dr., Hobbs, NM 88240
Phone (505) 393-6161 Fax (505) 393-0720

DISTRICT II

811 S. First St., Artesia, NM 88210
Phone (505) 748-1283 Fax (505) 748-0720

DISTRICT III

1000 Rio Brazos Rd., Aztec, NM 87410
Phone (505) 334-6178 Fax (505) 334-6170

DISTRICT IV

1220 S. St. Francis Dr., Santa Fe, NM 87505
Phone (505) 478-3480 Fax (505) 478-3482State of New Mexico
Energy, Minerals and Natural Resources Department

Form C-102

Revised August 1, 2011

Submit one copy to appropriate
District Office

OIL CONSERVATION DIVISION

1220 South St. Francis Dr.
Santa Fe, New Mexico 87505

WELL LOCATION AND ACREAGE DEDICATION PLAT

AMENDED REPORT
As Drilled

API Number 30-015-38669		Pool Code 96209	Pool Name Corral Canyon; Wolfcamp
Property Code 306402	Property Name POKER LAKE UNIT		Well Number 348H
GRID No. 260737	Operator Name BOPCO, L.P.		Elevation 3321'

Surface Location

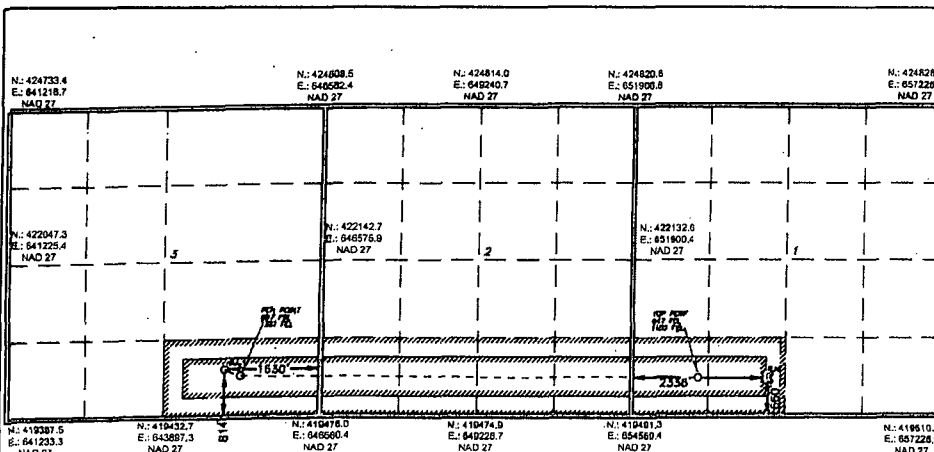
UL or lot No.	Section	Township	Range	Lot Idn	Feet from the	North/South line	Feet from the	East/West line	County
0	3	25 S	30 E		814	SOUTH	1630	EAST	EDDY

Bottom Hole Location If Different From Surface

UL or lot No.	Section	Township	Range	Lot Idn	Feet from the	North/South line	Feet from the	East/West line	County
N	1	25 S	30 E		660	SOUTH	2336	WEST	EDDY

Dedicated Acres 320	Joint or Infill	Consolidation Code	Order No.
------------------------	-----------------	--------------------	-----------

NO ALLOWABLE WILL BE ASSIGNED TO THIS COMPLETION UNTIL ALL INTERESTS HAVE BEEN CONSOLIDATED
OR A NON-STANDARD UNIT HAS BEEN APPROVED BY THE DIVISION



SURFACE LOCATION
 Lat - N 32°09'16.40"
 Long - W 103°51'54.03"
 NMSPCE - N 420264.309
 E 644935.227
 (NAD-27)

BOTTOM HOLE LOCATION
 Lat - N 32°09'14.69"
 Long - W 103°50'05.65"
 NMSPCE - N 420133.2
 E 654253.0
 (NAD-27)

OPERATOR CERTIFICATION

I hereby certify that the information contained herein is true and complete to the best of my knowledge and belief, and that this organization either owns a working interest or unleased mineral interest in the land including the proposed bottom hole location or has a right to drill this well at this location pursuant to a contract with an owner of such a mineral or working interest, or to a voluntary pooling agreement or a compulsory pooling order heretofore entered by the division.

Signature: *Tracie J Cherry* Date: 02/13/15

Tracie J Cherry

Printed Name

tjcherry@basspet.com

Email Address

SURVEYOR CERTIFICATION

I hereby certify that the well location shown on this plat was plotted from field notes of actual surveys made by me or under my supervision and that the same is true and correct to the best of my belief.

Signature: *Alfonso L. Jones*
 Date Surveyed: *02/13/15*
 Signature & Seal of Professional Surveyor
 Certificate No. 7977
 BASIN SURVEYS

0' 1500' 3000' 4500' 6000'
 SCALE: 1" = 3000'
 WO Num.: 25011