

District I
1625 N. French Dr., Hobbs, NM 88240

District II
1301 W. Grand Avenue, Artesia, NM 88210

District III
1000 Rio Brazos Rd., Aztec, NM 87410

District IV
1220 S. St. Francis Dr., Santa Fe, NM 87505

NM OIL CONSERVATION
ARTESIA DISTRICT
State of New Mexico
Energy, Minerals & Natural Resources Department
OIL CONSERVATION DIVISION
1220 South St. Francis Dr.
Santa Fe, NM 87505

Form C-102
Revised October 15, 2009
Submit one copy to appropriate District Office
☐ AMENDED REPORT

WELL LOCATION AND ACREAGE DEDICATION PLAT

¹ API Number 30-015-40025	² Pool Code 97913	³ Pool Name WC G-06 S2530020; Bone Spring
⁴ Property Code 39110	⁵ Property Name LONGBOARD PWU 20	⁶ Well Number 1H
⁷ OGRID No. 6137	⁸ Operator Name DEVON ENERGY PRODUCTION COMPANY, L.P.	⁹ Elevation 3340.3

¹⁰ Surface Location

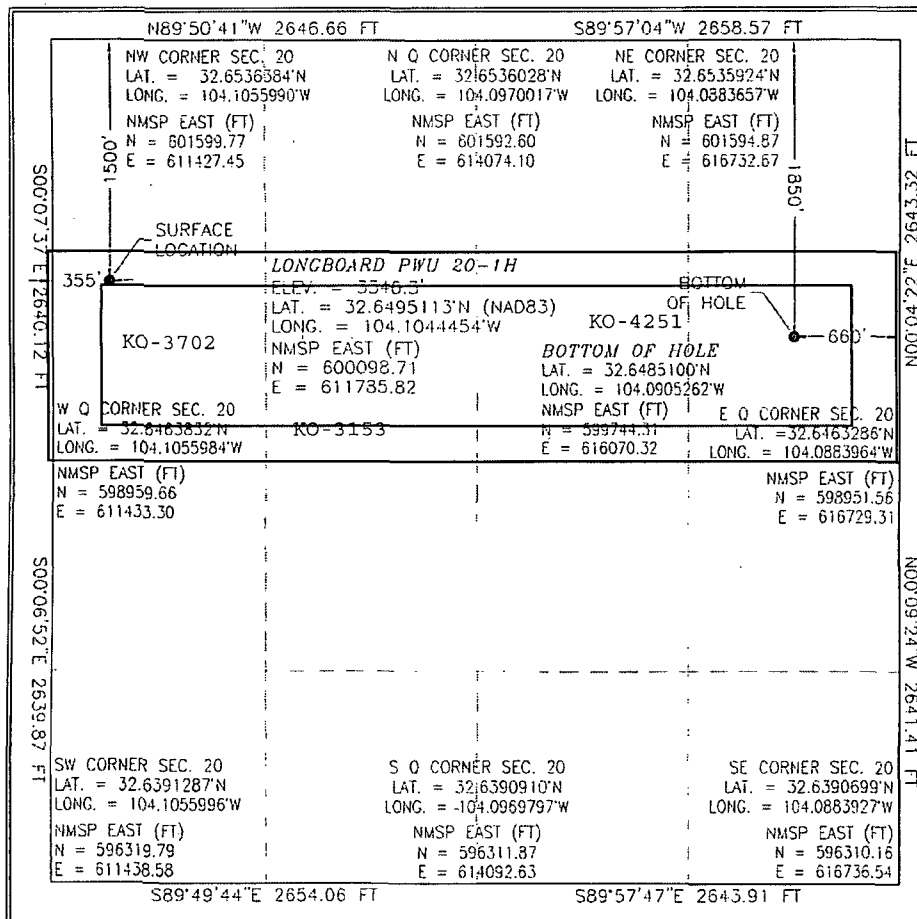
UL or lot no.	Section	Township	Range	Lot Idn	Feet from the	North/South line	Feet from the	East/West line	County
E	20	19 S	29 E		1500	NORTH	355	WEST	EDDY

¹¹ Bottom Hole Location If Different From Surface

UL or lot no.	Section	Township	Range	Lot Idn	Feet from the	North/South line	Feet from the	East/West line	County
H	20	19 S	29 E		1850	NORTH	660	EAST	EDDY

¹² Dedicated Acres 160	¹³ Joint or Infill	¹⁴ Consolidation Code	¹⁵ Order No.
---	-------------------------------	----------------------------------	-------------------------

No allowable will be assigned to this completion until all interests have been consolidated or a non-standard unit has been approved by the division.



¹⁷ OPERATOR CERTIFICATION

I hereby certify that the information contained herein is true and complete to the best of my knowledge and belief, and that this organization either owns a working interest or unleased mineral interest in the land including the proposed bottom hole location or has a right to drill this well at this location pursuant to a contract with an owner of such a mineral or working interest, or to a voluntary pooling agreement or a compulsory pooling order heretofore entered by the division.

Lucretia Morris 8/13/2015
Signature Date

Printed Name

Lucretia Morris, Regulatory Analyst

¹⁸ SURVEYOR CERTIFICATION

I hereby certify that the well location shown on this plat was plotted from field notes of actual surveys made by me or under my supervision, and that the same is true and correct to the best of my belief.

APRIL 5, 2015

Date of Survey

Filimon F. Jaramillo
Signature and Seal of Professional Surveyor

Certificate Number: **FILIMON F. JARAMILLO, PLS 12797**
SURVEY NO. 1001

Project Area: XXXXXXXXXX

Producing Area: XXXXXXXXXX