

District I
1625 N. French Dr., Hobbs, NM 88240
District II
1301 W. Grand Avenue, Artesia, NM 88210
District III
1000 Rio Brazos Rd., Aztec, NM 87410
District IV
1220 S. St. Francis Dr., Santa Fe, NM 87505

State of New Mexico
Energy, Minerals & Natural Resources Department
OIL CONSERVATION DIVISION
1220 South St. Francis Dr.
Santa Fe, NM 87505

Form C-102
Revised October 12, 2005
Submit to Appropriate District Office
State Lease- 4 Copies
Fee Lease- 3 Copies

AMENDED REPORT
As Drilled

WELL LOCATION AND ACREAGE DEDICATION PLAT

API Number 30-015-40761	Pool Code 97565	Pool Name North Seven Rivers, Glorieta - Yeso
Property Code 39485	Property Name OSAGE "18" FEE C COM	Well Number 1H
OCRD No. 16696	Operator Name OXY USA INC.	Elevation 3576.4'

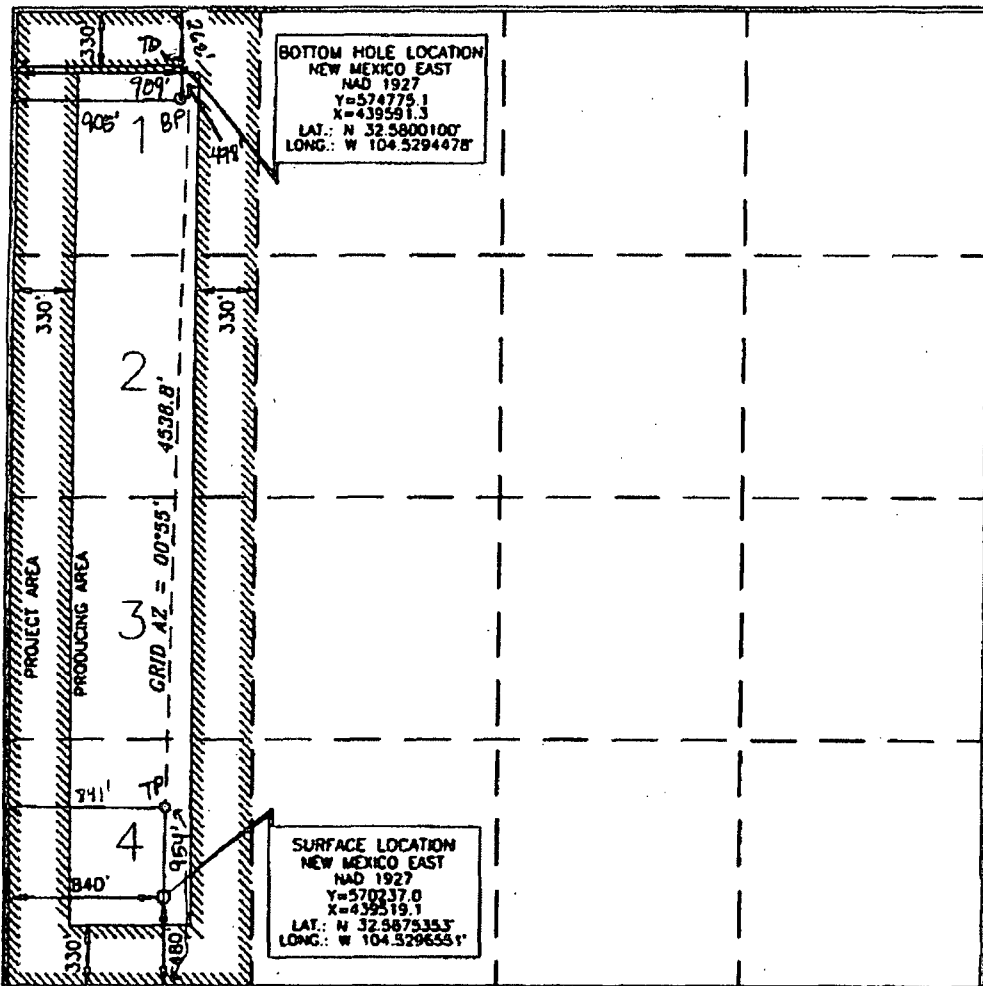
Surface Location

UL or lot no.	Section	Township	Range	Lot km	Feet from the	North/South line	Feet from the	East/West line	County
4	18	20 SOUTH	25 EAST, N.M.P.M.		480'	SOUTH	840'	WEST	EDDY

Bottom Hole Location If Different From Surface

UL or lot no.	Section	Township	Range	Lot km	Feet from the	North/South line	Feet from the	East/West line	County
1	18	20 SOUTH	25 EAST, N.M.P.M.		300' 262'	NORTH	800' 909'	WEST	EDDY
Dedicated Acres 158.4	Joint or Infill	Consolidation Code	Order No.	TD- 262' FNL 909' FNL BP- 478' FNL 905' FNL TP- 951' FSL 841' FNL					

No allowable will be assigned to this completion until all interests have been consolidated or a non-standard unit has been approved by the division.



OPERATOR CERTIFICATION

I hereby certify that the information contained herein is true and complete to the best of my knowledge and belief, and that this organization either owns a working interest or unleased mineral interest in the land including the proposed bottom hole location or has a right to drill this well at this location pursuant to a contract with an owner of such a mineral or working interest, or to a voluntary pooling agreement or a compulsory pooling order heretofore entered by the division.

[Signature] 3/26/15
Signature Date

Jara Mendiola
Printed Name

SURVEYOR CERTIFICATION

I hereby certify that the well location shown on this plat was obtained from field notes, or other surveys made by me or under my supervision, and that the same is true and correct to the best of my belief.

[Circular Surveyor Seal: 15079]
SEPTEMBER 21, 2015
Date of Survey

[Signature]
Signature Professional Surveyor

[Signature] 6/28/2015
Certificate Number 15079