

State of New Mexico  
**Energy, Minerals & Natural Resources Department**  
**OIL CONSERVATION DIVISION**  
1220 South St. Francis Dr.  
Santa Fe, New Mexico 87505

SEP 23 2015  
**RECEIVED**

Form C-102  
Revised August 1, 2011  
Submit one copy to appropriate District Office

**DISTRICT I**  
1625 N. French Dr., Hobbs, NM 88240  
Phone: (575) 393-6161 Fax: (575) 393-0720  
**DISTRICT II**  
811 S. First St., Artesia, NM 88210  
Phone: (575) 748-1283 Fax: (575) 748-9720  
**DISTRICT III**  
1000 Rio Brazos Road, Aztec, NM 87410  
Phone: (505) 334-6178 Fax: (505) 334-6170  
**DISTRICT IV**  
1220 S. St. Francis Dr., Santa Fe, NM 87505  
Phone: (505) 476-3460 Fax: (505) 476-3462

**AMENDED REPORT**

**WELL LOCATION AND ACREAGE DEDICATION PLAT**

API Number <b>30-015-43250</b>	Pool Code <b>96831</b>	Pool Name <b>Cedar Lake; Glorieta-Yeso</b>
Property Code <b>39330</b>	Property Name <b>NFE FEDERAL COM</b>	Well Number <b>61H</b>
OGRID No. <b>873</b>	Operator Name <b>APACHE CORPORATION</b>	Elevation <b>3837'</b>

Surface Location

UL or lot No.	Section	Township	Range	Lot Idn	Feet from the	North/South line	Feet from the	East/West line	County
<b>I</b>	<b>8</b>	<b>17-S</b>	<b>31-E</b>		<b>1795</b>	<b>SOUTH</b>	<b>25</b>	<b>EAST</b>	<b>EDDY</b>

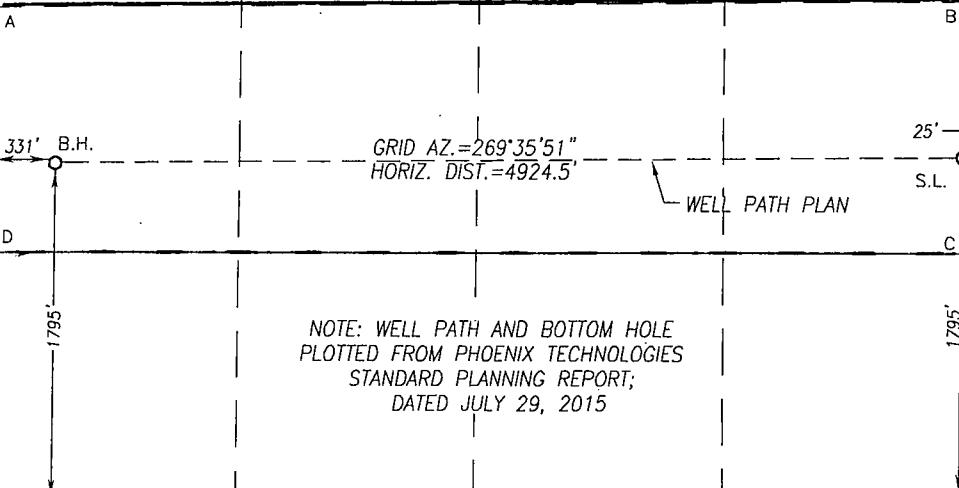
Bottom Hole Location If Different From Surface

UL or lot No.	Section	Township	Range	Lot Idn	Feet from the	North/South line	Feet from the	East/West line	County
<b>L</b>	<b>8</b>	<b>17-S</b>	<b>31-E</b>		<b>1795</b>	<b>SOUTH</b>	<b>331</b>	<b>WEST</b>	<b>EDDY</b>

Dedicated Acres <b>160</b>	Joint or Infill	Consolidation Code	Order No.
-------------------------------	-----------------	--------------------	-----------

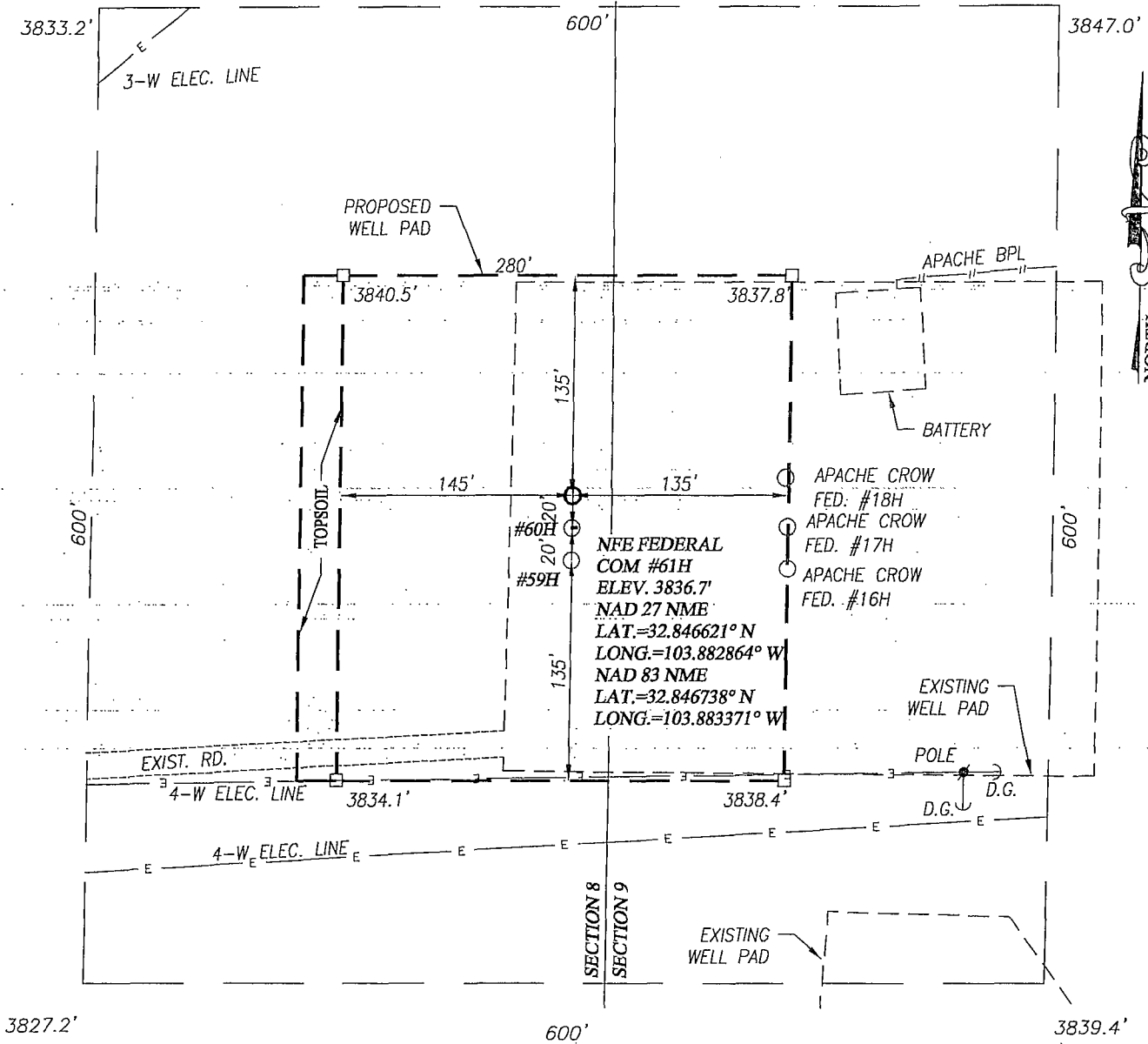
**NO ALLOWABLE WILL BE ASSIGNED TO THIS COMPLETION UNTIL ALL INTERESTS HAVE BEEN CONSOLIDATED OR A NON-STANDARD UNIT HAS BEEN APPROVED BY THE DIVISION**

<p>NAD 83 NME BOTTOM HOLE LOCATION Y= 672036.1 N X= 674600.9 E LAT.=32.846699° N LONG.=103.899405° W LAT.=32°50'48" N LONG.=103°53'58" W</p>	<p>CORNER COORDINATES TABLE NAD 83 NME A - Y= 672878.9 N, X= 674265.0 E B - Y= 672916.6 N, X= 679544.3 E C - Y= 671596.5 N, X= 679551.8 E D - Y= 671559.1 N, X= 674272.6 E</p>	<p>GEODETIC COORDINATES NAD 83 NME SURFACE LOCATION Y= 672070.8 N X= 679524.1 E LAT.=32.846738° N LONG.=103.883371° W LAT.=32°50'48" N LONG.=103°53'00" W</p>	<p><b>OPERATOR CERTIFICATION</b> I hereby certify that the information herein is true and complete to the best of my knowledge and belief, and that this organization either owns a working interest or unleased mineral interest in the land including the proposed bottom hole location or has a right to drill this well at this location pursuant to a contract with an owner of such mineral or working interest, or to a voluntary pooling agreement or a compulsory pooling order heretofore entered by the division.</p> <p><i>Margaret Drennan</i> 9/17/15 Signature Date Margaret Drennan Printed Name margaret.drennan@apachecorp.com E-mail Address</p>
<p>NAD 27 NME BOTTOM HOLE LOCATION Y= 671972.2 N X= 633422.2 E LAT.=32.846582° N LONG.=103.898898° W LAT.=32°50'48" N LONG.=103°53'56" W</p>	<p>CORNER COORDINATES TABLE NAD 27 NME A - Y= 672814.9 N, X= 633086.4 E B - Y= 672852.6 N, X= 638365.7 E C - Y= 671532.5 N, X= 638373.2 E D - Y= 671495.1 N, X= 633093.9 E</p>	<p>GEODETIC COORDINATES NAD 27 NME SURFACE LOCATION Y= 672006.8 N X= 638345.5 E LAT.=32.846621° N LONG.=103.882864° W LAT.=32°50'48" N LONG.=103°52'58" W</p>	<p><b>SURVEYOR CERTIFICATION</b> I hereby certify that the well location shown on this plat was plotted from field notes of actual surveys made by me or under my supervision, and that the same is true and correct to the best of my belief.</p> <p><b>RONALD J. EIDSON</b> SEP 29 2015 NEW MEXICO REGISTERED PROFESSIONAL SURVEYOR 3239</p> <p>Date of Survey Signature &amp; Seal of Professional Surveyor <i>Ronald J. Eidson</i> 08/27/2015 Certificate Number Gary G. Eidson 12641 Ronald J. Eidson 3239</p>

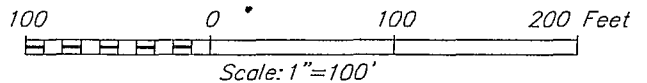


NOTE: WELL PATH AND BOTTOM HOLE PLOTTED FROM PHOENIX TECHNOLOGIES STANDARD PLANNING REPORT; DATED JULY 29, 2015

# WELL SITE PLAN



NOTE:  
1) SEE "TOPOGRAPHICAL AND ACCESS ROAD MAP" FOR PROPOSED ROAD LOCATION.



DIRECTIONS TO THIS LOCATION:

FROM THE INTERSECTION OF U.S. HWY 82 AND CO. RD. 221 (SKELLY) GO NORTH 1.3 MILES TURN RIGHT AND GO NORTHEAST 0.5 MILES TURN RIGHT AND GO EAST APPROX. 1.5 MILES TO THIS LOCATION.

## APACHE CORPORATION

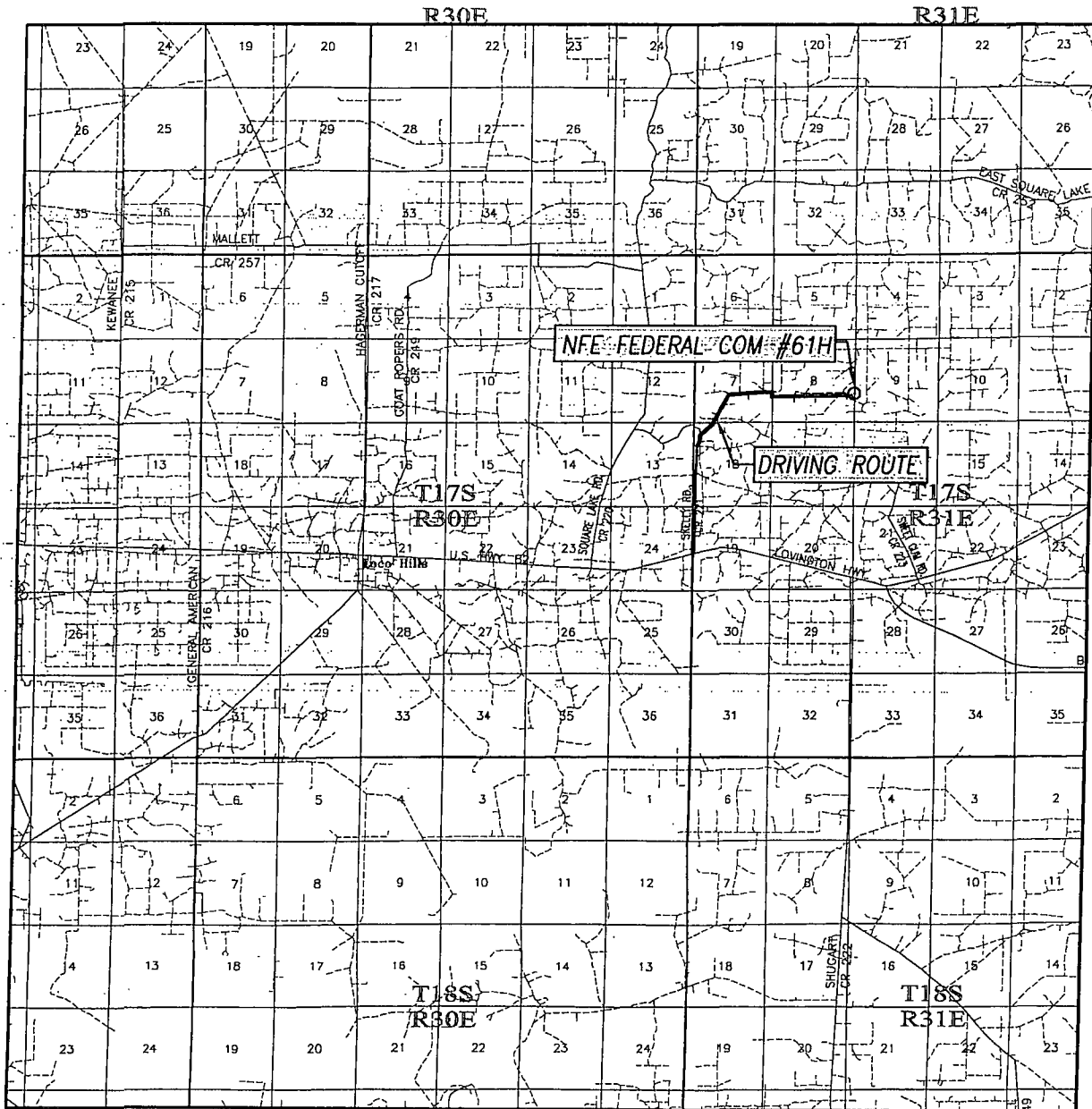
NFE FEDERAL COM #61H WELL  
LOCATED 1795 FEET FROM THE SOUTH LINE  
AND 25 FEET FROM THE EAST LINE OF SECTION 8,  
TOWNSHIP 17 SOUTH, RANGE 31 EAST, N.M.P.M.,  
EDDY COUNTY, NEW MEXICO



PROVIDING SURVEYING SERVICES  
SINCE 1946  
**JOHN WEST SURVEYING COMPANY**  
412 N. DAL PASO HOBBS, N.M. 88240  
(575) 393-3117 www.jwsc.biz  
TBPLS# 10021000

Survey Date: 10/27/14	CAD Date: 11/5/14	Drawn By: LSL
W.O. No.: 15130016	Rev: .8/27/15	Rel. W.O.: 14110982
		Sheet 1 of 1


# VICINITY MAP



SCALE: 1" = 2 MILES

DRIVING ROUTE: SEE TOPOGRAPHICAL AND ACCESS ROAD MAP

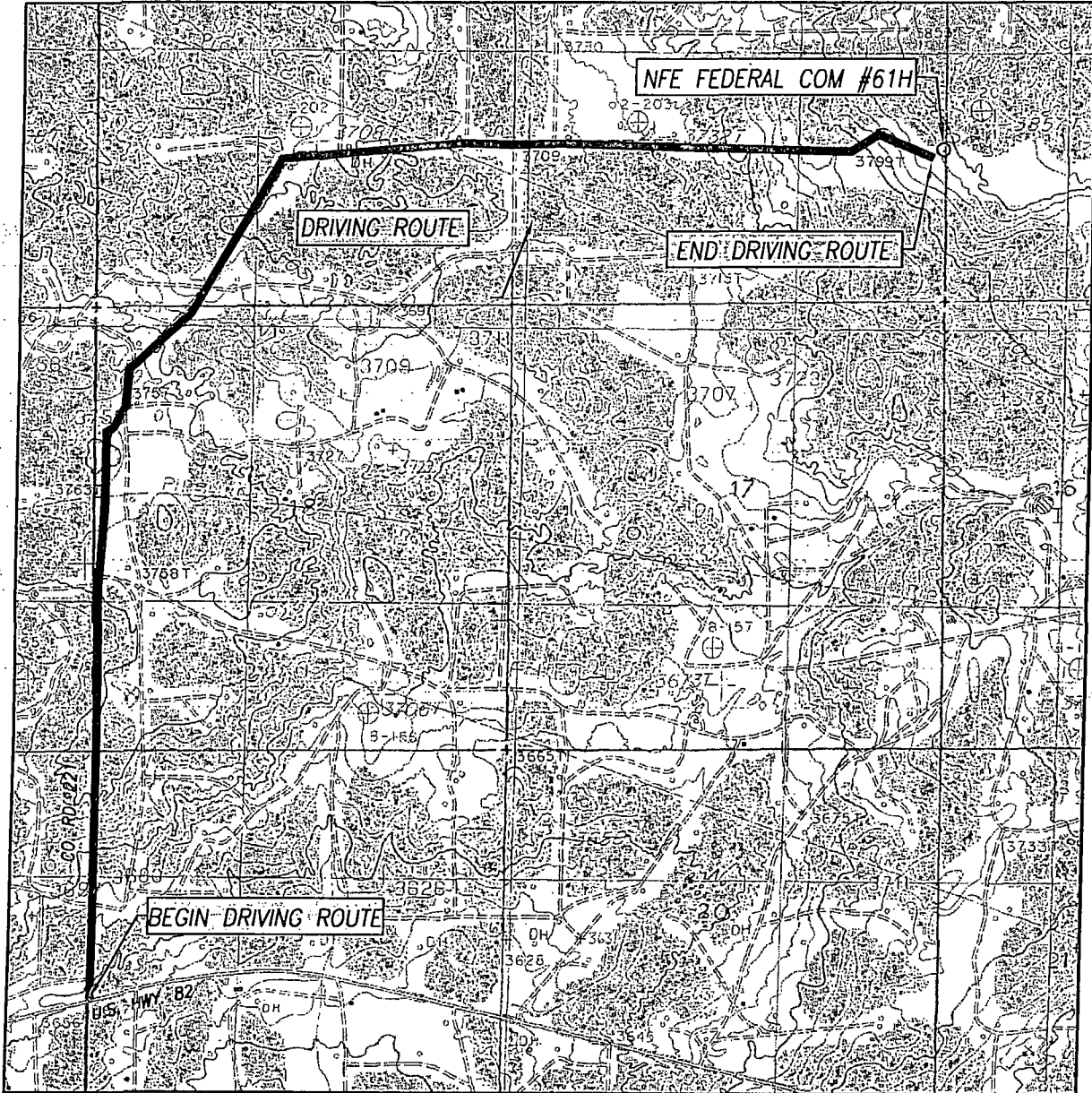
SEC. 8 TWP. 17-S RGE. 31-E  
 SURVEY N.M.P.M.  
 COUNTY EDDY STATE NEW MEXICO  
 DESCRIPTION 1795' FSL & 25' FEL  
 ELEVATION 3837'  
 OPERATOR APACHE CORPORATION  
 LEASE NFE FEDERAL COM



PROVIDING SURVEYING SERVICES  
SINCE 1946

**JOHN WEST SURVEYING COMPANY**  
 412 N. DAL PASO HOBBS, N.M. 88240  
 (575) 393-3117 www.jwsc.biz  
 TBPLS# 10021000

# TOPOGRAPHICAL AND ACCESS ROAD MAP



SCALE: 1" = 2000'

CONTOUR INTERVAL:  
LOCO HILLS, N.M. - 10'

SEC. 8 TWP. 17-S RGE. 31-E

SURVEY \_\_\_\_\_ N.M.P.M. \_\_\_\_\_

COUNTY EDDY STATE NEW MEXICO

DESCRIPTION 1795' FSL & 25' FEL

ELEVATION \_\_\_\_\_ 3837' \_\_\_\_\_

OPERATOR APACHE CORPORATION

LEASE NFE FEDERAL COM

U.S.G.S. TOPOGRAPHIC MAP  
LOCO HILLS, N.M.

DIRECTIONS TO THIS LOCATION:

FROM THE INTERSECTION OF U.S. HWY 82 AND CO. RD. 221 (SKELLY)  
GO NORTH 1.3 MILES TURN RIGHT AND GO NORTHEAST 0.5 MILES  
TURN RIGHT AND GO EAST APPROX. 1.5 MILES TO THIS LOCATION.



PROVIDING SURVEYING SERVICES  
SINCE 1946  
**JOHN WEST SURVEYING COMPANY**  
412 N. DAL PASO HOBBS, N.M. 88240  
(575) 393-3117 [www.jwsc.biz](http://www.jwsc.biz)  
TBPLS# 10021000