

1625 N. French Dr., Hobbs, NM 88240
District II
811 South First, Artesia, NM 88210
District III
1000 Rio Brazos Road, Aztec, NM 87410
District IV
2040 South Pacheco, Santa Fe, NM 87505

State of New Mexico
Energy Minerals and Natural Resources

Form C-101
Revised March 17, 1999

Oil Conservation Division
2040 South Pacheco
Santa Fe, NM 87505

Submit to appropriate District Office
State Lease - 6 Copies
Fee Lease - 5 Copies

RECEIVED

☐ AMENDED REPORT

APPLICATION FOR PERMIT TO DRILL, RE-ENTER, DEEPEN, PLUGBACK, OR ADD A ZONE

Operator Name and Address UNIT PETROLEUM COMPANY (KELLY RYAN) P.O. BOX 702500 TULSA, OKLAHOMA 74170 (918-477-4542)		OGRID Number 15970
Property Code 16446	Property Name YATES STATE	API Number 30-015-32801
		Well No. 2

Surface Location

UL or lot no.	Section	Township	Range	Lot ldn	Feet from the	North/South line	Feet from the	East/West line	County
M	10	21S	27E		1310'	SOUTH	1310'	EAST	EDDY

Proposed Bottom Hole Loc

UL or lot no.	Section	Township	Range	Lot ldn	F	NOTIFY OCD SPUD & TIME TO WITNESS 8 5/8" CASING 9 5/8	line	County
Proposed Pool 1 BURTON FLAT-MORROW (73280)								

Work Type Code N	Well Type Code G	Cable/Rotary ROTARY	Lease Type Code S	Ground Level Elevation 3268'
Multiple NO	Proposed Depth 11,500'	Formation MORROW	Contractor UNKNOWN	Spud Date WHEN APPROVED

Proposed Casing and Cement Program

Hole Size	Casing Size	Casing weight/foot	Setting Depth	Sacks of Cement	Estimated TOC
25"	20"	NA	40'	Redi-mix.	SURFACE
17 1/2"	13 3/8"	48	600'	600 Sx	SURFACE
12 1/4"	9 5/8"	36	3000'	1200 Sx.	SURFACE
8 3/4"	5 1/2"	17 & 20	11,500'	1450 Sx.	4000' FS.

Describe the proposed program. If this application is to DEEPEN or PLUG BACK, give the data on the present productive zone and proposed new productive zone.
Describe the blowout prevention program, if any. Use additional sheets if necessary.

1. Drill 25" hole to 40'. Set 40' of 20" conductor pipe and cement to surface with Redi-mix.
2. Drill 17 1/2" hole to 600'. Run and set 600' of 13 3/8" 48# H-40 ST&C casing. Cement with 600 Sx. of Class "C" cement + 2% CaCl, + 1/4# Flocele/Sx. circulate cement to surface.
3. Drill 12 1/4" hole to 3000'. Run and set 3000' of 9 5/8" 36# J-55 ST&C casing. Cement with 850 Sx. of Class "C" Light Weight cement + additives, tail in with 350 Sx. of Class "C" cement + 2% CaCl, + 1/4# Flocele/Sx. circulate cement.
4. Drill 8 3/4" hole to 11,500'. Run and set 5 1/2" casing as follows: 2500' of 5 1/2" 20# N-80 LT&C, 7500' of 5 1/2" 17# N-80 LT&C, 1500' of 5 1/2" 20# N-80 LT&C. Cement with 950 Sx. of Class "H" Light Weight cement + additives, tail in with 500 Sx. of Class "H" PREMIUM Plus cement + additives. Estimate top of cement 4000' from surface.

I hereby certify that the information given above is true and complete to the best of my knowledge and belief.

Signature: Joe T. Janica

Printed name: Joe T. Janica

Title: Agent

Date: 05/14/03

Phone: 505-391-8503

OIL CONSERVATION DIVISION

Approved by:

Title:

Approval Date:

Conditions of Approval:

Attached ☐

Joe W. Green

District Supervisor

MAY 21 2003

Expiration Date:

MAY 21 2004

DISTRICT I

1025 N. French Dr., Hobbs, NM 88240

DISTRICT II

811 South First, Artesia, NM 88210

DISTRICT III

1000 Rio Brazos Rd., Aztec, NM 87410

DISTRICT IV

2040 South Pacheco, Santa Fe, NM 87505

State of New Mexico

Energy, Minerals and Natural Resources Department

Form C-102

Revised March 17, 1999

Submit to Appropriate District Office

State Lease - 4 Copies

Fee Lease - 3 Copies

OIL CONSERVATION DIVISION

2040 South Pacheco

Santa Fe, New Mexico 87504-2088

☐ AMENDED REPORT

WELL LOCATION AND ACREAGE DEDICATION PLAT

API Number	Pool Code 73280	Pool Name BURTON FLAT-MORROW
Property Code	Property Name YATES STATE	Well Number 2
OGRID No. 115970	Operator Name UNIT PETROLEUM COMPANY	Elevation 3268'

Surface Location

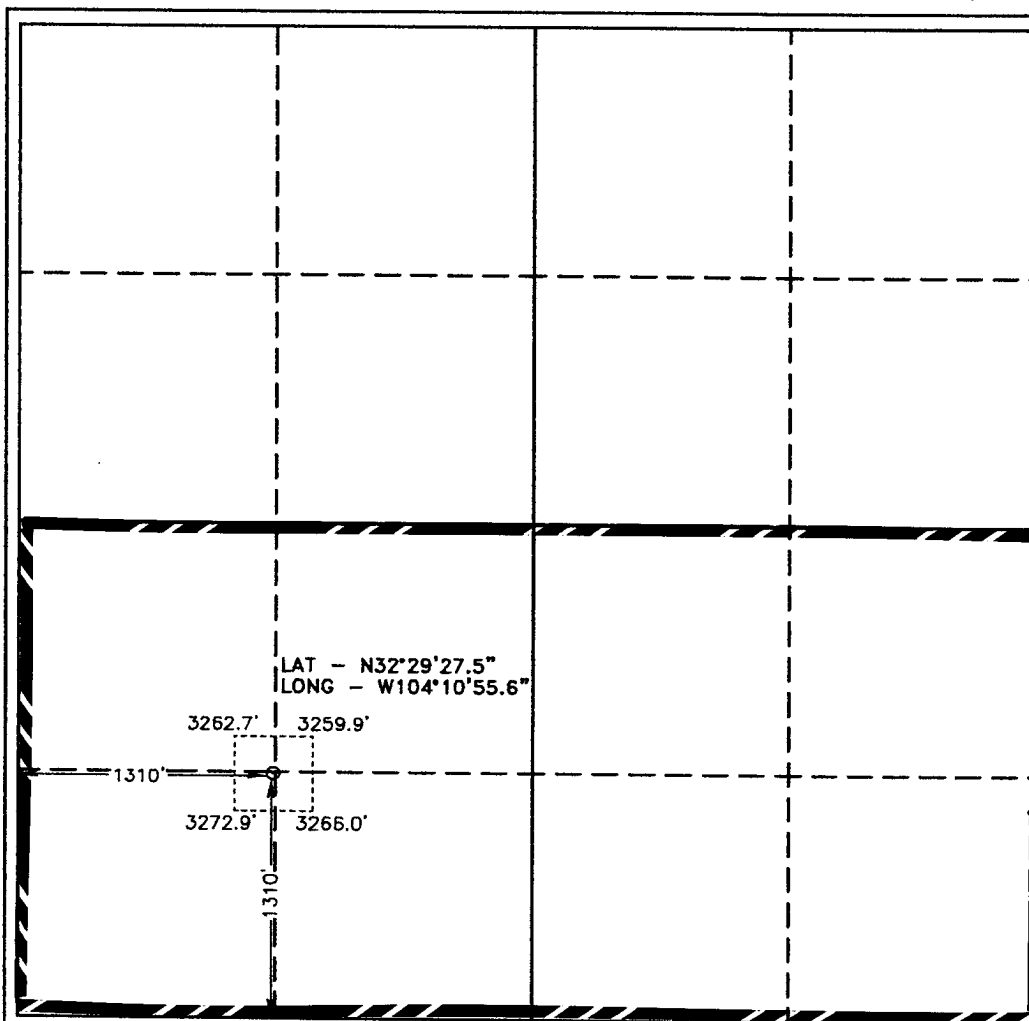
UL or lot No.	Section	Township	Range	Lot Idn	Feet from the	North/South line	Feet from the	East/West line	County
M	10	21 S	27 E		1310	SOUTH	1310	WEST	EDDY

Bottom Hole Location If Different From Surface

UL or lot No.	Section	Township	Range	Lot Idn	Feet from the	North/South line	Feet from the	East/West line	County

Dedicated Acres 320	Joint or Infill	Consolidation Code	Order No.
------------------------	-----------------	--------------------	-----------

NO ALLOWABLE WILL BE ASSIGNED TO THIS COMPLETION UNTIL ALL INTERESTS HAVE BEEN CONSOLIDATED
OR A NON-STANDARD UNIT HAS BEEN APPROVED BY THE DIVISION



OPERATOR CERTIFICATION

I hereby certify the the information
contained herein is true and complete to the
best of my knowledge and belief.

Joe T. Janica
Signature

Joe T. Janica

Printed Name

Agent

Title

05/14/03

Date

SURVEYOR CERTIFICATION

I hereby certify that the well location shown
on this plat was plotted from field notes of
actual surveys made by me or under my
supervision and that the same is true and
correct to the best of my belief.

FEBRUARY 24, 2003

Date Surveyed

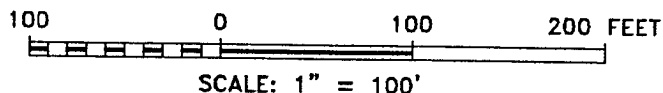
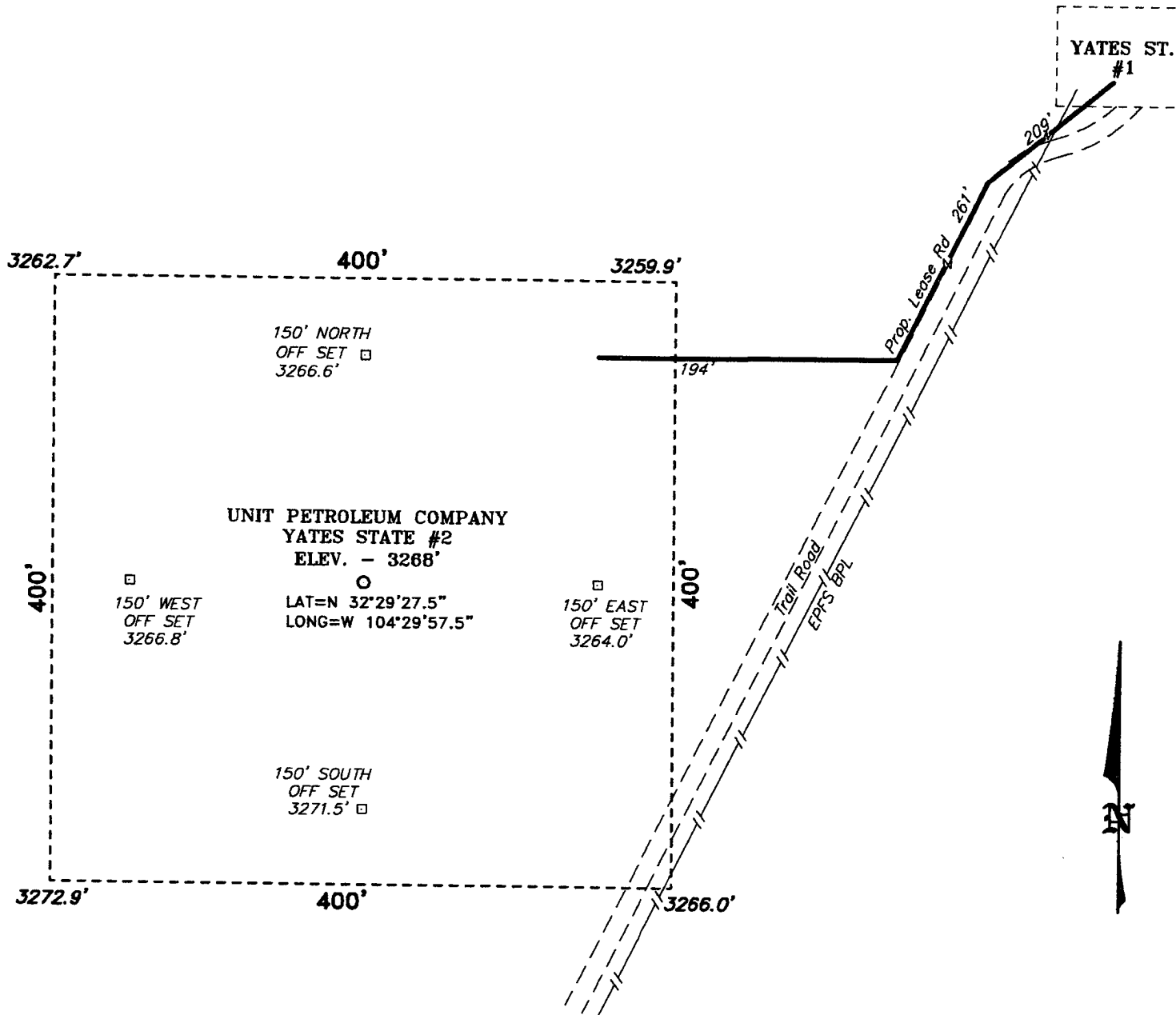
Signature & Seal of
Professional Surveyor

Gary L. Jones
W.O. No. 3042A

Certificate No. Gary L. Jones 7977

BASIN SURVEYS

**SECTION 10, TOWNSHIP 21 SOUTH, RANGE 27 EAST, N.M.P.M.,
EDDY COUNTY,
NEW MEXICO.**



DIRECTIONS TO LOCATION:

FROM THE JUNCTION OF CO. RD. 206 AND CO. RD. 600, GO EASTERLY ON CO. RD. 600 FOR 2.2 MILES TO A 4-WAY INTERSECTION AND CONTINUE STRAIGHT GOING EAST/NORTHEAST FOR APPROX. 0.1 MILE TO A LEASE ROAD; THENCE SOUTHEAST ON LEASE FOR APPROX. 0.5 MILE TO THE YATES STATE #1 LOCATION AND PROPOSED LEASE ROAD.

BASIN SURVEYS P.O. BOX 1786 - HOBBS, NEW MEXICO

W.O. Number: 3042 Drawn By: **K. GOAD**

Date: 02-26-2003 Disk: KJG #7 - 3042A.DWG

UNIT PETROLEUM COMPANY

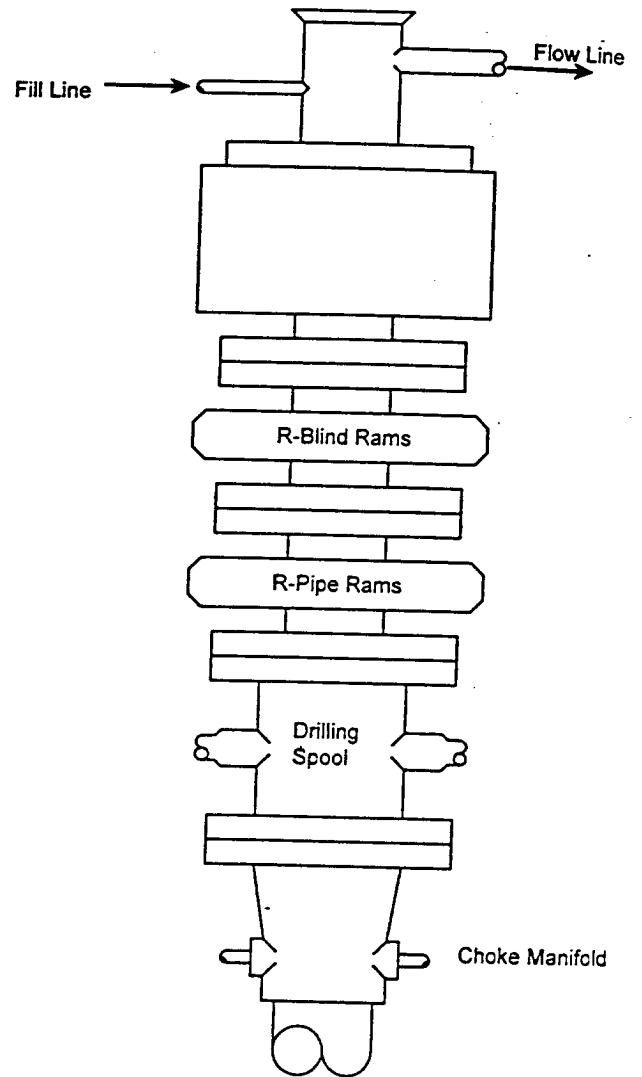
REF: YATES STATE No. 2 / Well Pad Topo

THE YATES STATE No. 2 LOCATED 1310' FROM THE SOUTH LINE AND 1310' FROM THE WEST LINE OF SECTION 10, TOWNSHIP 21 SOUTH, RANGE 27 EAST, N.M.P.M., EDDY COUNTY, NEW MEXICO.

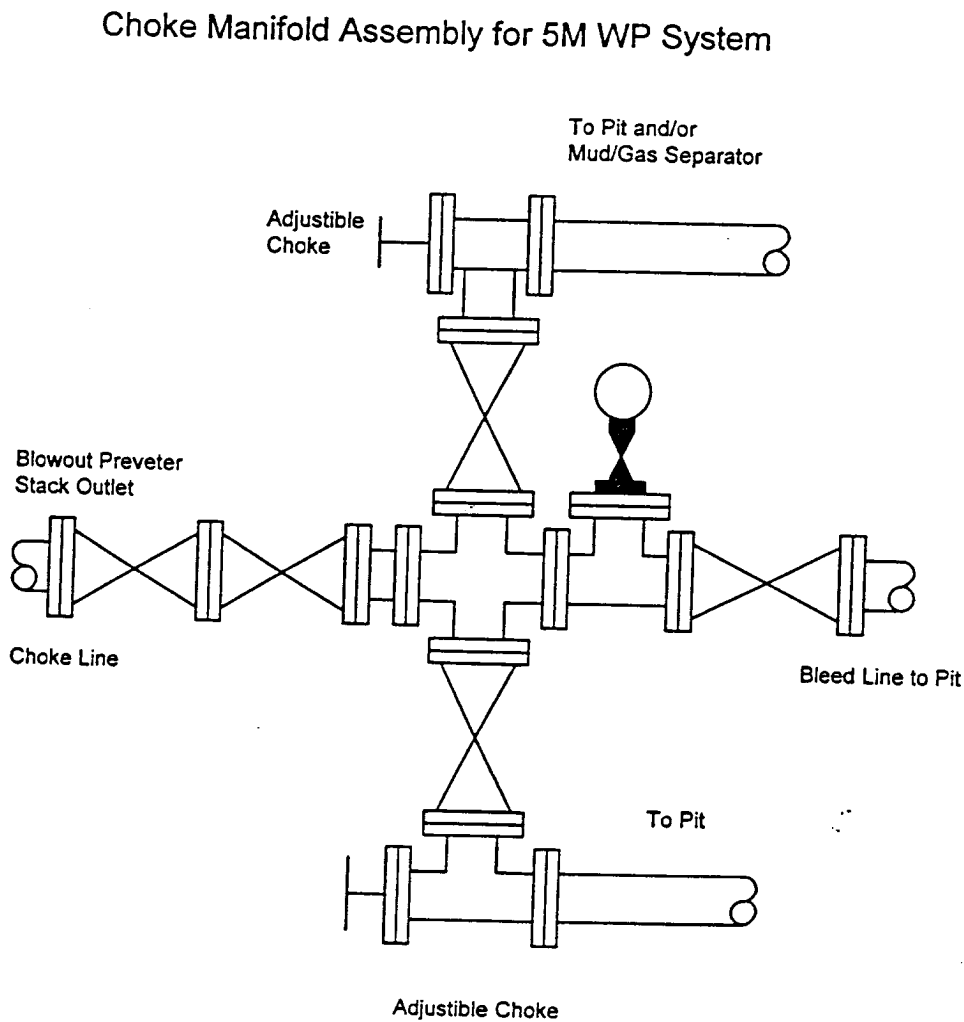
Survey Date: 02-24-2003 Sheet 1 of 1 Sheets

BLOWOUT PREVENTER SYSTEM

5000 PSI



Type 1500 SERIES
5000 psi WP



Yates State #2

Morrow Completion

11,500' TD

Section 10-21S-27E

Eddy County, New Mexico

320 acre unit 3/2

Proposed Casing Program

13 3/8" Surface

Depth	Wt.	Grade	Hole Size	Pg	Pb	Tensile
0-600'	48#	H-40	STC	770 psi	1730 psi	322,000#
	SF (Pg)	SF (Pb)	SF (Ten)			
0-600'	2.46	5.7	11			

9 5/8" Intermediate

Depth	Wt.	Grade	Hole Size	Pg	Pb	Tensile
0-3000'	36#	I-55	STC	2020 psi	3520 psi	394,000#
	SF (Pg)	SF (Pb)	SF (Ten)			
0-3000'	1.29	2.34	3.64			

5 1/2" Production

Depth	Wt.	Grade	Hole Size	Pg	Pb	Tensile
0-1500'	20#	N-80	LTC	8830	9190	428
1500'-9000'	17#	N-80	LTC	6280	7740	348
9000'-11,500'	20#	N-80	LTC	8830	9190	428
	SF (Pg)	SF (Pb)	SF (Ten)			
0-1500'	10	1.87	2.06			
1500'-9000'	1.22	1.58	1.96			
9000'-11,500'	1.34	1.87	8.56			

Proposed Cement Program

13 3/8" Surface

Cement to surface with Class "C" + additives.
Wait on cement 12 hours prior to drill out.

9 5/8" Intermediate

Cement to surface with Class "C" + additives.
Wait on cement 12 hours prior to drill out.

5 1/2" Production

Cement with Class "H" + additives

Proposed Mud System

Depth	Type	Wt.	Vis.	WL
0-600'	Fresh Water	8.6-9.0	36-40	NC
600'-3000'	Fresh Water	8.4-8.6	28-32	NC
3000'-8800'	Cut Brine	8.4-9.2	28-32	25
8800'-11,500'	Cut Brine	9.2-9.6	32-36	6-10

Formation Tops

Delaware	2900'
Bone Spring	5100'
Wolfcamp	9000'
Strawn	10,100
Atoka	10,350
Morrow	11,000'

Logging Program

GR/Dual Laterolog, MSFL, TD - 8500'
GR/Comp. Neutron-Density TD - surface

Mud logger on @ ???

No DST's or cores are anticipated.

Abnormal Conditions, Pressures, Temperatures

Anticipated bottom hole temperature is 175 deg. F. Depletion in the Morrow and Strawn is likely.
Yates State #1 has produced 9.3 bcf in the Morrow and 3.7 bcf in the Strawn.
Additional Morrow Sands may have higher pressures.