

Oil Cons.
N.M. DIV. 2
1001 W. Grand Avenue
DEPARTMENT OF THE INTERIOR, NM 88210
BUREAU OF LAND MANAGEMENTFORM APPROVED
OMB NO. 1004-0136
Expires: February 28, 1995

APPLICATION FOR PERMIT TO DRILL OR DEEPEN

1a. TYPE OF WORK

DRILL ☒DEEPEN ☐

b. TYPE OF WELL

OIL
WELL ☒GAS
WELL ☐

OTHER

SINGLE
ZONE ☒MULTIPLE
ZONE ☐

2. NAME OF OPERATOR

POGO PRODUCING COMPANY

(RICHARD WRIGHT 915-685-8140)

3. ADDRESS AND TELEPHONE NO.

P.O. BOX 10340 MIDLAND, TEXAS 79702-7340 (915-685-8140)

4. LOCATION OF WELL (Report location clearly and in accordance with any State requirements.)

1980' FNL & 2310' FWL SECTION 7 T24S-R31E EDDY CO. NM
At proposed prod. zone SAME

14. DISTANCE IN MILES AND DIRECTION FROM NEAREST TOWN OR POST OFFICE*

Approximately 15 miles East Southeast of Carlsbad New Mexico

15. DISTANCE FROM PROPOSED

LOCATION TO NEAREST
PROPERTY OR LEASE LINE, FT.
(Also to nearest drlg. unit line, if any)

1980'

18. DISTANCE FROM PROPOSED LOCATION*
TO NEAREST WELL, DRILLING, COMPLETED,
OR APPLIED FOR, ON THIS LEASE, FT.

1320'

16. NO. OF ACRES IN LEASE

640

19. PROPOSED DEPTH

8500'

17. NO. OF ACRES ASSIGNED
TO THIS WELL

40

20. ROTARY OR CABLE TOOLS

ROTARY

21. ELEVATIONS (Show whether DF, RT, GR, etc.)

3494' GR. Carlsbad Controlled Water Basin

23.

22. APPROX. DATE WORK WILL START*
WHEN APPROVED

PROPOSED CASING AND CEMENTING PROGRAM

SIZE OF HOLE	GRADE SIZE OF CASING	WEIGHT PER FOOT	SETTING DEPTH	QUANTITY OF CEMENT
25"	Conductor 20"	NA	40'	Cement to surface with Redi-mix
17 1/2"	H-40 13 3/8"	48	975	1050 Sx. circulate to surface
11"	J-55 8 5/8"	32	4150	1200 Sx " " "
7 7/8"	J-55 5 1/2"	17 & 15.5	8500'	1750 Sx. 3 stages TOC surface

1. Drill 25" hole to 40'. Set 40' of 20" conductor pipe and cement to surface with Redi-mix.
2. Drill 17 1/2" hole to 975'. Run and set 975' of 13 3/8" 48# H-40 ST&C casing. Cement with 800 Sx. of 65/35/6 Class "C" POZ-GEL, tail in with 250 Sx of Class "C" cement + 2% CaCl, + 1/2# Flocele/Sx., circulate cement to surface.
3. Drill 11" hole to 4150'. Run and set 4150' of 8 5/8" 32# J-55 ST&C casing. Cement with 1000 Sx. of 65/35/6 Class "C" POZ-GEL + 5% Salt, tail in with 200 Sx. of Class "C" cement + 2% CaCl, circulate cement to surface.
4. Drill 7 7/8" hole to 8500'. Run and set 5 1/2" casing as follows: 2500' of 5 1/2" 17# J-55 LT&C, 5000' of 5 1/2" 15.5# J-55 LT&C, 1000' of 5 1/2" 17# J-55 LT&C casing. Cement in 3 stages with DV Tools at 8500' & 3700'±. Cement 1st stage with 650 Sx. of Class "H" cement + additives, 2nd stage cement with 600 Sx. of Class "C" cement + 8# of Gilsonite/Sx., 3rd stage cement with 400 Sx. of 65/35/6 Class "C" POZ-GEL, tqil in with 100 Sx. of Class "C" + 1% CaCl, circulate cement to surface.

IN ABOVE SPACE DESCRIBE PROPOSED PROGRAM: If proposal is to deepen, give data on present productive zone and proposed new productive zone. If proposal is to drill or deepen directionally, give pertinent data on subsurface locations and measured and true vertical depths. Give blowout preventer program, if any.

SIGNED DeT. Janica

TITLE Agent

DATE 03/22/03

(This space for Federal or State office use)

PERMIT NO.

APPROVAL DATE

Application approval does not warrant or certify that the applicant holds legal or equitable title to those rights in the subject property. It merely certifies that the applicant has met the conditions of approval, if any.

ACTING

APPROVAL SUBJECT TO
GENERAL REQUIREMENTS AND
SPECIAL STIPULATIONS
ATTACHED

APPROVED BY

/s/ Richard A. Whitley

TITLE

STATE DIRECTOR

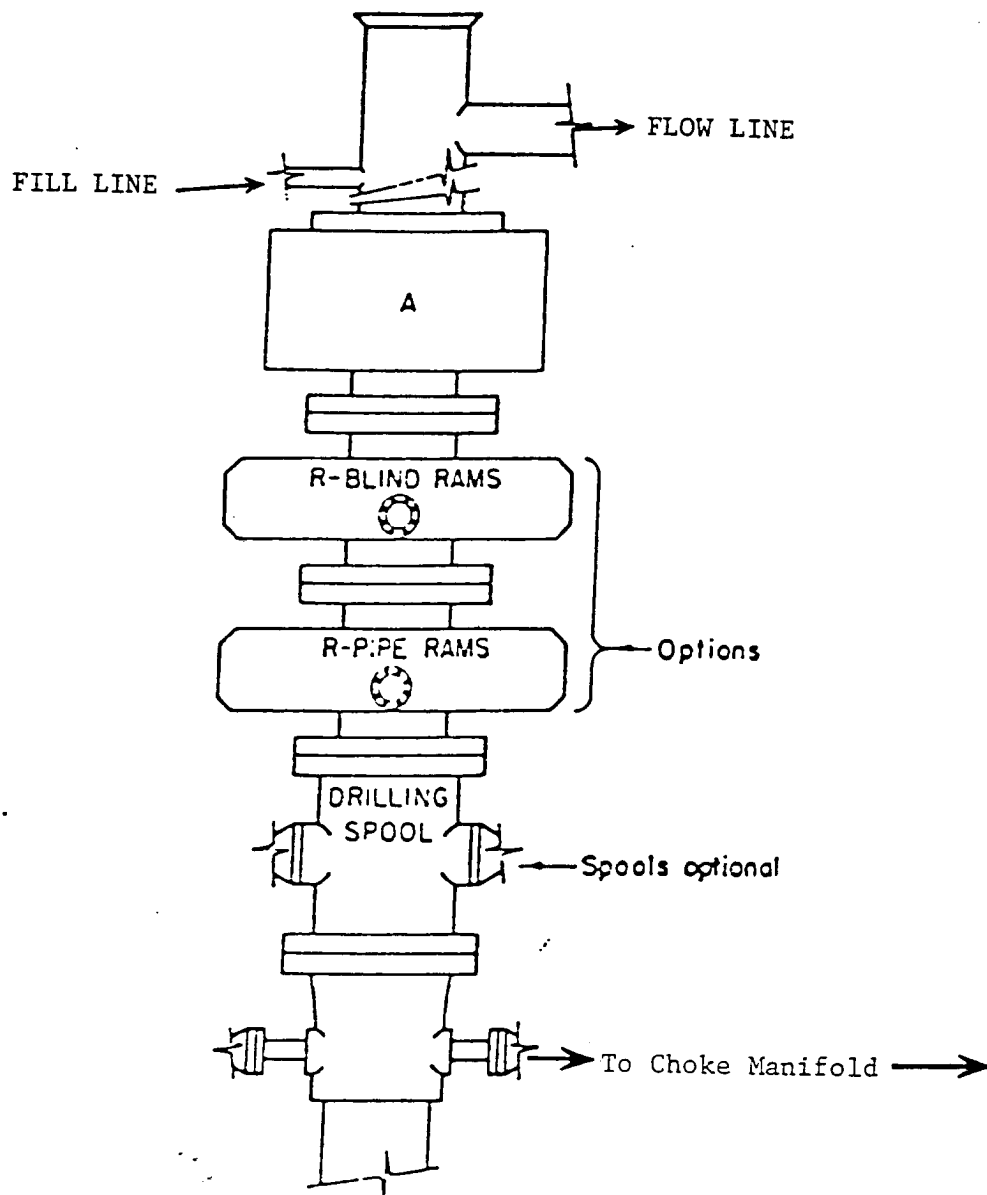
DATE

MAY 23 2003

*See Instructions On Reverse Side

APPROVAL FOR 1 YEAR

EXHIBIT "A"



ARRANGEMENT SRRA

900 Series
3000 PSI WP

EXHIBIT "E"
SKETCH OF B.O.P. TO BE USED ON

POGO PRODUCING COMPANY
PALLADIUM "7" FEDERAL # 5
UNIT "F" SECTION 7
T24S-R31E EDDY CO. NM

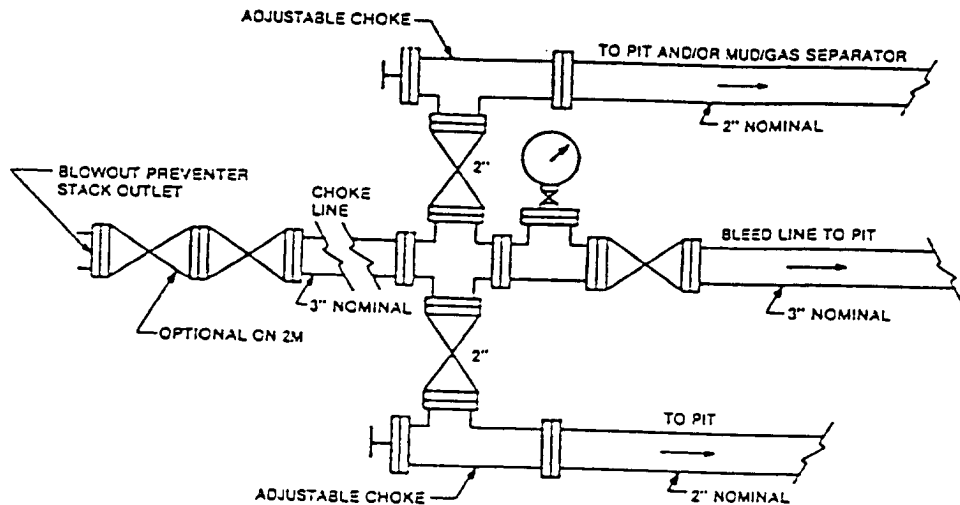


FIGURE K4-1. Typical choke manifold assembly for 2M and 3M rated working pressure service — surface installation.

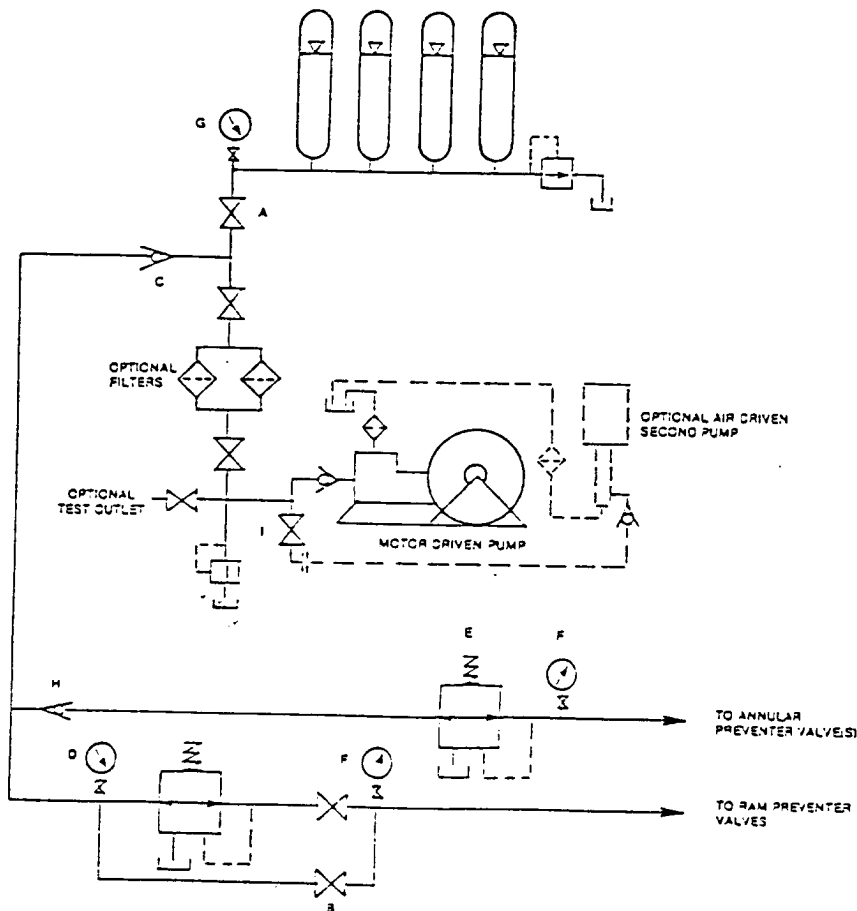


FIGURE K6-1. The schematic sketch of an accumulator system shows required and optional components.

EXHIBIT "E-1"
CHOKE MANIFOLD & CLOSING UNIT

POGO PRODUCING COMPANY
PALLADIUM "7" FEDERAL # 5
UNIT "F" SECTION 7
T24S-R31E EDDY CO. NM