

UNITED STATES
DEPARTMENT OF THE INTERIOR
BUREAU OF LAND MANAGEMENT
N.M. DIVISION
1301 W. Grand Avenue
Alamogordo, NM 88210FORM APPROVED
OMB NO. 1004-0136
Expires: February 28, 1995

APPLICATION FOR PERMIT TO DRILL OR DEEPEN

1a. TYPE OF WORK

DRILL ☒DEEPEN ☐

b. TYPE OF WELL

OIL
WELL ☒GAS
WELL ☐OTHER ☐

2. NAME OF OPERATOR

POGO PRODUCING COMPANY

(RICHARD WRIGHT)

3. ADDRESS AND TELEPHONE NO.

P.O. BOX 10340 MIDLAND, TEXAS 79702-7340 (915-685-8100)

4. LOCATION OF WELL (Report location clearly and in accordance with any State requirements.)

At surface
660' FNL & 2310' FWL SECTION 7 T24S-R31E EDDY CO. NM

At proposed prod. zone SAME

14. DISTANCE IN MILES AND DIRECTION FROM NEAREST TOWN OR POST OFFICE

Approximately 15 miles East Southeast of Carlsbad New Mexico.

15. DISTANCE FROM PROPOSED

LOCATION TO NEAREST
PROPERTY OR LEASE LINE, FT.
(Also to nearest drilg. unit line, if any)

660'

18. DISTANCE FROM PROPOSED LOCATION
TO NEAREST WELL, DRILLING, COMPLETED,
OR APPLIED FOR, ON THIS LEASE, FT.

1500'

16. NO. OF ACRES IN LEASE

640

19. PROPOSED DEPTH

8500'

17. NO. OF ACRES ASSIGNED
TO THIS WELL

40

20. ROTARY OR CABLE TOOLS

ROTARY

21. ELEVATIONS (Show whether DF, RT, GR, etc.)

3472' GR.

Carlsbad Controlled Water Basin

12. COUNTY OR PARISH
EDDY CO.

13. STATE

NEW MEXICO

22. APPROX. DATE WORK WILL START

WHEN APPROVED

PROPOSED CASING AND CEMENTING PROGRAM

SIZE OF HOLE	GRADE SIZE OF CASING	WEIGHT PER FOOT	SETTING DEPTH	QUANTITY OF CEMENT
25"	Conductor 20"	NA	40'	Cement to surface with Redi-mix
17½"	H-40 13 3/8"	48	975	1050 Sx. circulate to surface
11"	J-55 8 5/8"	32	4150	1200 Sx " " "
7 7/8"	J-55 5½"	17 & 15.5	8500'	1750 Sx. 3 stages TOC surface

1. Drill 25" hole to 40'. Set 40' of 20" conductor pipe and cement to surface with Redi-mix.
2. Drill 17½" hole to 975'. Run and set 975' of 13 3/8" 48# H-40 ST&C casing. Cement with 800 Sx. of 65/35/6 Class "C" POZ-GEL, tail in with 250 Sx of Class "C" cement + 2% CaCl, + ½# Flocele/Sx., circulate cement to surface.
3. Drill 11" hole to 4150'. Run and set 4150' of 8 5/8" 32# J-55 ST&C casing. Cement with 1000 Sx. of 65/35/6 Class "C" POZ-GEL + 5% Salt, tail in with 200 Sx. of Class "C" cement + 2% CaCl, circulate cement to surface.
4. Drill 7 7/8" hole to 8500'. Run and set 5½" casing as follows: 2500' of 5½" 17# J-55 LT&C, 5000' of 5½" 15.5# J-55 LT&C, 1000' of 5½" 17# J-55 LT&C casing. Cement in 3 stages with DV Tools at 8500' & 3700'±. Cement 1st stage with 650 Sx. of Class "H" cement + additives, 2nd stage cement with 600 Sx. of Class "C" cement + 8# of Gilsonite/Sx., 3rd stage cement with 400 Sx. of 65/35/6 Class "C" POZ-GEL, tail in with 100 Sx. of Class "C" + 1% CaCl, circulate cement to surface.

IN ABOVE SPACE DESCRIBE PROPOSED PROGRAM: If proposal is to deepen, give data on present productive zone and proposed new productive zone. If proposal is to drill or deepen directionally, give pertinent data on subsurface locations and measured and true vertical depths. Give blowout preventer program, if any.

SIGNED

TITLE Agent

DATE 03/22/03

(This space for Federal or State office use)

PERMIT NO.

APPROVAL DATE

Application approval does not warrant or certify that the applicant holds legal or equitable title to those rights in the subject land which would enable the applicant to conduct operations thereon.

CONDITIONS OF APPROVAL, IF ANY:

/s/ Richard A. Whitley

ACTING

MAY 23 2003

APPROVED BY

TITLE STATE DIRECTOR

DATE

*See Instructions On Reverse Side

APPROVAL FOR 1 YEAR

DISTRICT I
P.O. Box 1880, Hobbs, NM 88241-1880

DISTRICT II
P.O. Drawer DD, Artesia, NM 88211-0710

DISTRICT III
1000 Rio Brazos Rd., Aztec, NM 87410

DISTRICT IV
P.O. BOX 2088, SANTA FE, N.M. 87504-2088

State of New Mexico

Energy, Minerals and Natural Resources Department

OIL CONSERVATION DIVISION

P.O. Box 2088
Santa Fe, New Mexico 87504-2088

Form C-102
Revised February 10, 1994
Submit to Appropriate District Office
State Lease - 4 Copies
Fee Lease - 3 Copies

WELL LOCATION AND ACREAGE DEDICATION PLAT

☐ AMENDED REPORT

API Number	Pool Code 53818	Pool Name SAND DUNES DELAWARE SOUTH
Property Code	Property Name PALLADIUM 7 FEDERAL	Well Number 4
OGRID No. 17891	Operator Name POGO PRODUCING COMPANY	Elevation 3472'

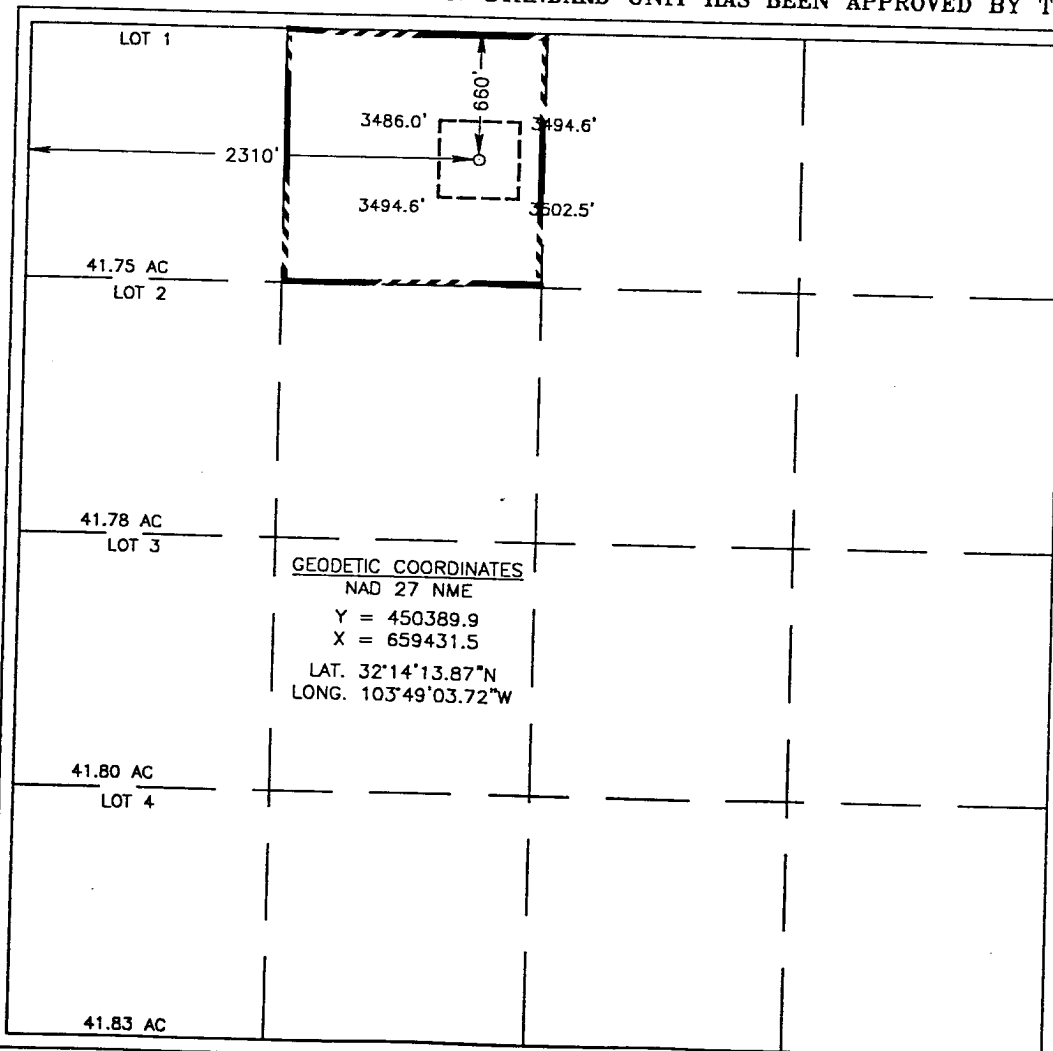
Surface Location

UL or lot No.	Section	Township	Range	Lot Idn	Feet from the	North/South line	Feet from the	East/West line	County
C	7	24-S	31-E		660'	NORTH	2310'	WEST	EDDY

Bottom Hole Location If Different From Surface

UL or lot No.	Section	Township	Range	Lot Idn	Feet from the	North/South line	Feet from the	East/West line	County
Dedicated Acres 40	Joint or Infill	Consolidation Code	Order No.						

NO ALLOWABLE WILL BE ASSIGNED TO THIS COMPLETION UNTIL ALL INTERESTS HAVE BEEN CONSOLIDATED
OR A NON-STANDARD UNIT HAS BEEN APPROVED BY THE DIVISION



OPERATOR CERTIFICATION

I hereby certify the the information
contained herein is true and complete to the
best of my knowledge and belief.

Joe T. Janica
Signature

Joe T. Janica
Printed Name
Agent

Title

03/22/03
Date

SURVEYOR CERTIFICATION

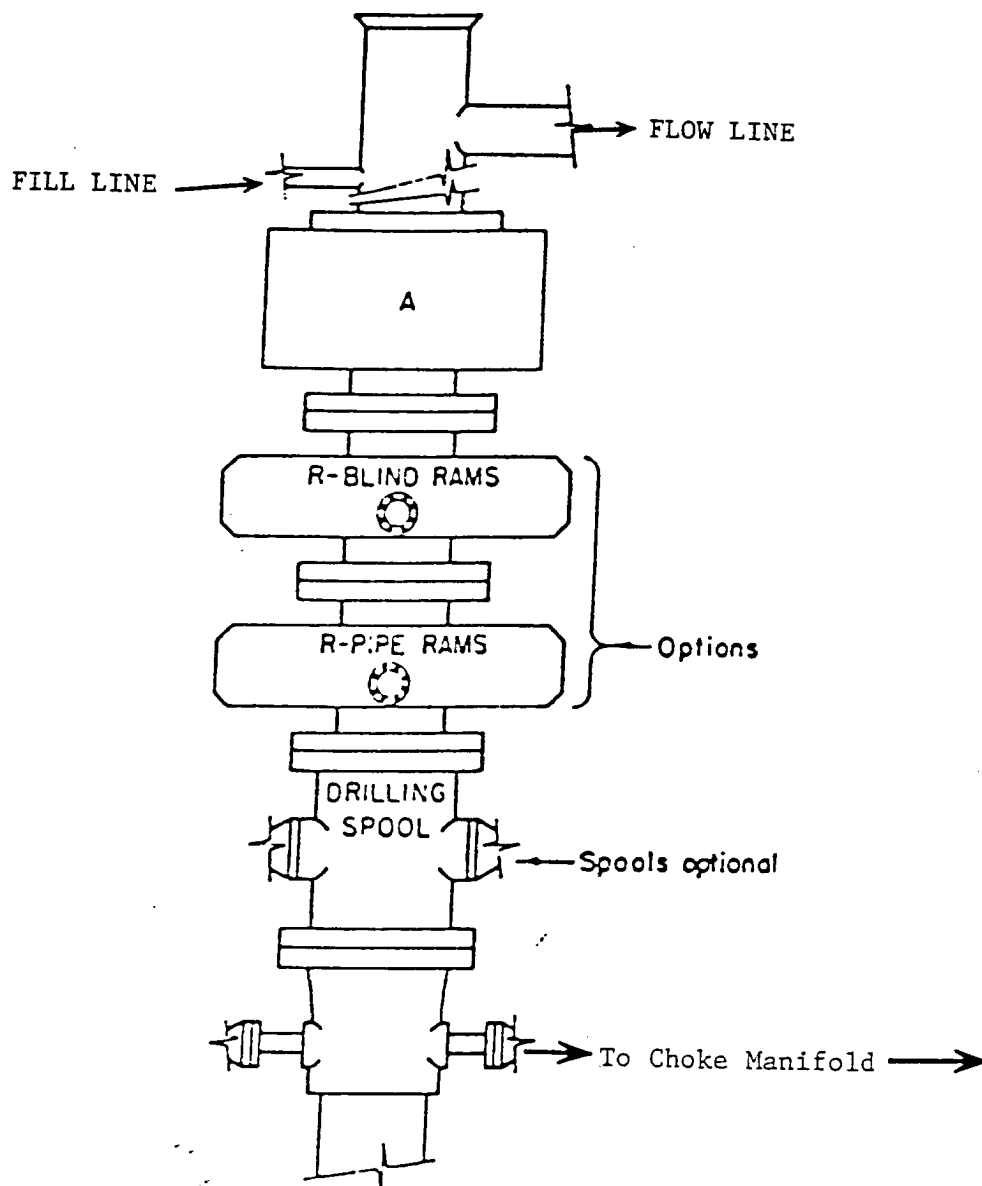
I hereby certify that the well location shown
on this plat was plotted from field notes of
actual surveys made by me or under my
supervision, and that the same is true and
correct to the best of my belief.

MARCH 06, 2003

Date Surveyed
Signature & Seal of
Professional Surveyor

A.W.B

Gary E. Edson 3/10/03
03.11.0277
Certificate No. RONALD E. EDSON 3239
GARY EDSON 12641



ARRANGEMENT SRRA

900 Series
3000 PSI WP

EXHIBIT "E"
SKETCH OF B.O.P. TO BE USED ON

POGO PRODUCING COMPANY
PALLADIUM "7" FEDERAL # 4
UNIT "C" SECTION 7
T24S-R31E EDDY CO. NM

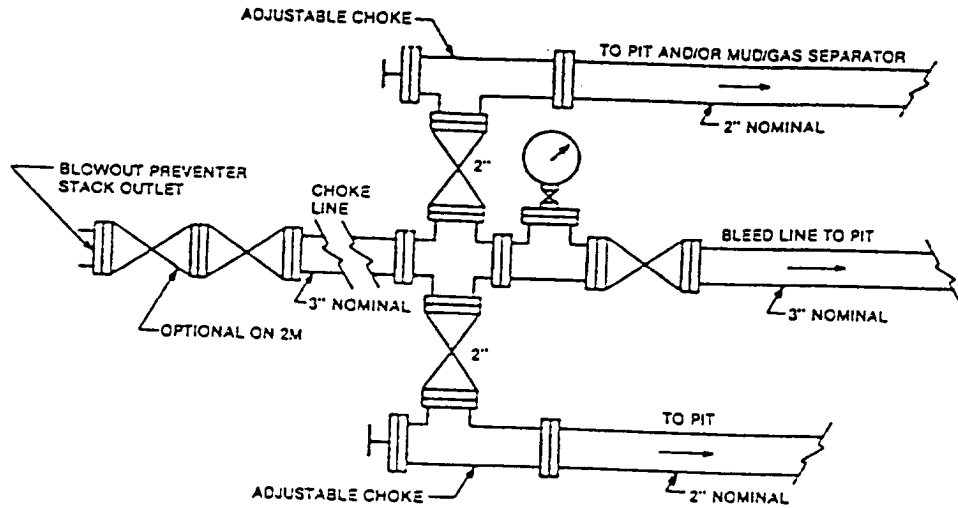


FIGURE K-1. Typical choke manifold assembly for 2M and 3M rated working pressure service — surface installation.

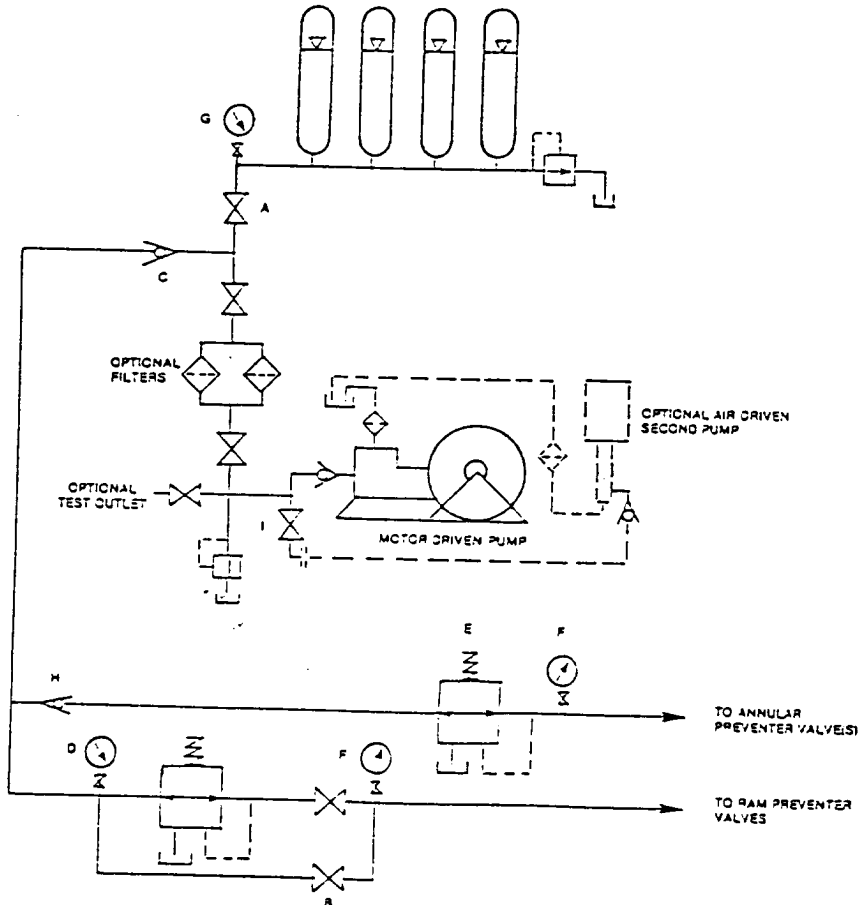


FIGURE K-6-1. The schematic sketch of an accumulator system shows required and optional components.

EXHIBIT "E-1"
CHOKE MANIFOLD & CLOSING UNIT

POGO PRODUCING COMPANY
PALLADIUM "7" FEDERAL # 4
UNIT "C" SECTION 7
T24S-R31E EDDY CO. NM