

N.M. Oil Cons. DIV-Dist. 2

UNITED STATES
DEPARTMENT OF THE INTERIOR
BUREAU OF LAND MANAGEMENT1301 W. Grand Avenue
Albuquerque, NM 87210FORM APPROVED
OMB No. 1004-0135
Expires November 30, 2000

SUNDRY NOTICES AND REPORTS ON WELLS

Do not use this form for proposals to drill or to re-enter an
Abandoned well. Use Form 3160-3 (APD) for such proposals.

SUBMIT IN TRIPLICATE - Other instructions on reverse side

1. Type of Well <input checked="" type="checkbox"/> Oil Well <input checked="" type="checkbox"/> Gas Well <input type="checkbox"/> Other		8. Well Name and No. GOLDFISH 17 FEDERAL #1
2. Name of Operator BP AMERICA PRODUCTION COMPANY		9. API Well No. 30-015-34376
3a. Address PO BOX 3092 HOUSTON, TX 77253	3b. Phone No. (include area code) 281-366-1842	10. Field and Pool, or Exploratory Area Wildcat Atoka & Undesignated Loco Hills (Morrow)
4. Location of Well (Footage, Sec., T., R., M., or Survey Description) 2055' FNL & 1015' FEL; SEC 17 T17S R30E SENE		11. County or Parish, State EDDY, NM

12. CHECK APPROPRIATE BOX(ES) TO INDICATE NATURE OR NOTICE, REPORT, OR OTHER DATA

TYPE OF SUBMISSION	TYPE OF ACTION	
<input checked="" type="checkbox"/> Notice of Intent	<input type="checkbox"/> Acidize	<input type="checkbox"/> Deepen
<input type="checkbox"/> Subsequent Report	<input type="checkbox"/> Alter Casing	<input type="checkbox"/> Fracture Treat
<input type="checkbox"/> Final Abandonment Notice	<input type="checkbox"/> Casing Repair	<input type="checkbox"/> New Construction
	<input type="checkbox"/> Change Plans	<input type="checkbox"/> Plug and Abandon
	<input type="checkbox"/> Convert to Injection	<input type="checkbox"/> Plug Back
	<input type="checkbox"/> Production (Start/Resume)	<input type="checkbox"/> Water shut-Off
	<input type="checkbox"/> Reclamation	<input type="checkbox"/> Well Integrity
	<input type="checkbox"/> Recomplete	<input checked="" type="checkbox"/> Other Downhole Commingle
	<input type="checkbox"/> Water Disposal	

13. Describe Proposed or Completed Operation (clearly state all pertinent details, including estimated starting date of any proposed work and approximate duration thereof. If the proposal is to deepen directionally or recompleat horizontally, give subsurface locations and measured and true vertical depths of all pertinent markers and zones. Attach the Bond under which the work will be performed or provide the Bond No. on file with BLM/BIA. Required subsequent reports shall be filed within 30 days following completion of the involved operations. If the operation results in a multiple completion or recompleat in a new interval, a Form 3160-4 shall be filed once testing has been completed. Final Abandonment Notices shall be filed only after all requirements, including reclamation, have been completed, and the operator has determined that the site is ready for final inspection.

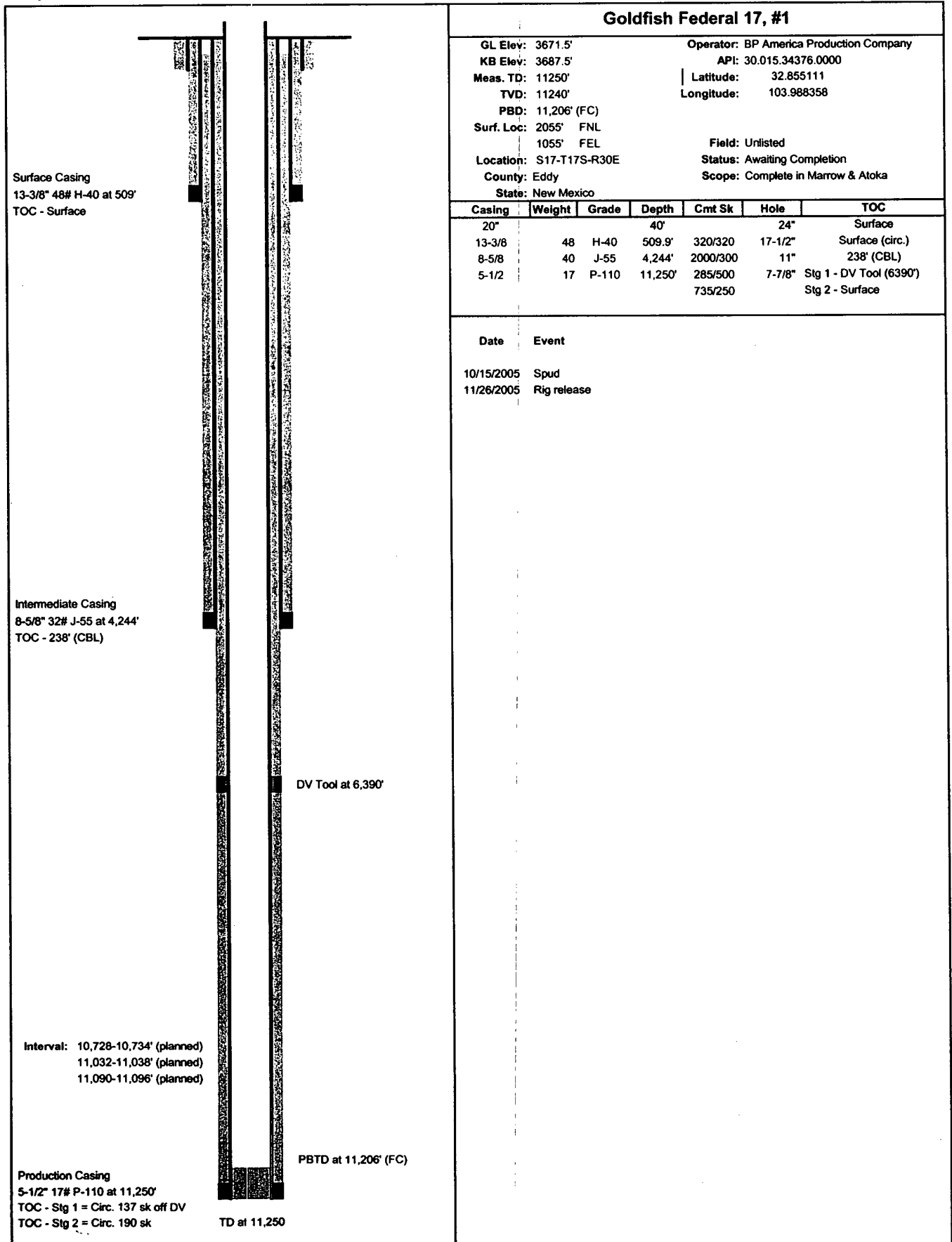
The original APD was approved on 09/15/05. The Sundry Notice to change this well to a directional well was approved on 10/04/05. BP America respectfully requests approval BLM review and approval to downhole commingle the Wildcat Atoka & Undesignated Loco Hills (Morrow) per the attached procedure and wellbore schematic. On 11/29/05, William Jones (NMOCD) granted verbal approval of this request & assigned DHC 3598 to these sands.

The working, royalty and overriding royalty interests are identical in the proposed commingled zones; therefore, no additional notification is required.

Allocation percentages are estimated based on reserve calculations prepared for both the Morrow & Atoka formations. (see attachments). Commingling production downhole in the subject well from the proposed pools will no reduce the value of the total remaining production. *Verbal approval from David Glass on 11/30/05*

14. I hereby certify that the foregoing is true and correct Name (Printed/typed) Susan B. Becnel		APPROVED DEC 2 - 2005
Title Regulatory Consultant		
Signature <i>Susan Becnel</i>		
Date 011/30/2005		
SUBJECT TO THIS SPACE FOR FEDERAL OR STATE OFFICE USE		
LES BABYAK PETROLEUM ENGINEER		
Approved by BY NMOCD		
Conditions of approval, if any, are attached. Approval of this notice does not warrant or Certify that the applicant holds legal or equitable title to those rights in the subject lease which would entitle the applicant to conduct operations thereon.		
Title		
Office		

Title 18 U.S.C. Section 1001 and Title 43 U.S.C. Section 1212, make it a crime for any person knowingly and willfully to make to any department or agency of the United States any false, fictitious or fraudulent statements or representations as to any matter within its jurisdiction.



DISTRICT I
1625 N. French Dr., Hobbs, NM 88240

DISTRICT II
P.O. Drawer DD, Artesia, NM 88211-0719

DISTRICT III
1000 Rio Brazos Rd., Aztec, NM 87410

DISTRICT IV
2040 South Pacheco, Santa Fe, NM 87505

State of New Mexico
Energy, Minerals & Natural Resources Department

Form C-102
Revised August 18, 2000
Submit to Appropriate District Office
State Lease - 4 Copies
Fee Lease - 3 Copies

OIL CONSERVATION DIVISION
2040 South Pacheco
Santa Fe, NM 87505

☐ AMENDED REPORT

WELL LOCATION AND ACREAGE DEDICATION PLAT

API Number 30-015-34376	Pool Code	Pool Name Undesignated Loco Hills (Morrow)
Property Code	Property Name GOLDFISH FED. 17	Well Number 1
OGRID No. 778	Operator Name BP AMERICA PRODUCTION COMPANY	Elevation 3671'

Surface Location

UL or lot No.	Section	Township	Range	Lot Idn	Feet from the	North/South line	Feet from the	East/West line	County
H	17	17 S	30 E		2055	NORTH	1015	EAST	EDDY

Bottom Hole Location If Different From Surface

UL or lot No.	Section	Township	Range	Lot Idn	Feet from the	North/South line	Feet from the	East/West line	County
H	17	17 S	30 E		1980	NORTH	1015'	EAST	EDDY

Dedicated Acres	Joint or Infill	Consolidation Code	Order No.
320 AC.			

NO ALLOWABLE WILL BE ASSIGNED TO THIS COMPLETION UNTIL ALL INTERESTS HAVE BEEN CONSOLIDATED OR A NON-STANDARD UNIT HAS BEEN APPROVED BY THE DIVISION

<p>RECEIVED DEC 7 2005 OCC-ARTESIA</p>	<p>Plane Coordinate X = 605,958.9 Y = 668,034.3</p>	<p>3673.2' 3672.3' 3673.1' 3673.9'</p>	<p>2055'</p>	<p>1015'</p>	<p>320 AC.</p>	<p>OPERATOR CERTIFICATION</p> <p>I hereby certify the the information contained herein is true and complete to the best of my knowledge and belief.</p> <p><i>Sue Sellers</i> Signature Sue Sellers Printed Name Regulatory Asst. Title August 15, 2005 Date</p>
					<p>SURVEYOR CERTIFICATION</p> <p>I hereby certify that the well location shown on this plat was plotted from field notes of actual surveys made by me or under my supervision and that the same is true and correct to the best of my belief.</p> <p>July 11, 2005 Date Surveyed Signature & Seal of Professional Surveyor W.O. Num. 2005-0657 Certificate No. MACON McDONALD 1218</p>	

NOTE:

1) Plane Coordinates shown hereon are Transverse Mercator Grid and Conform to the "New Mexico Coordinate System", New Mexico East Zone, North American Datum of 1927. Distances shown hereon are mean horizontal surface values.

DISTRICT I
1625 N. French Dr., Hobbs, NM 88240

State of New Mexico
Energy, Minerals & Natural Resources Department

Form C-102
Revised August 16, 2000
Submit to Appropriate District Office
State Lease - 4 Copies
Fee Lease - 3 Copies

DISTRICT II
P.O. Drawer DD, Artesia, NM 88211-0719

DISTRICT III
1000 Rio Brasos Rd., Artec, NM 87410

DISTRICT IV
2040 South Pacheco, Santa Fe, NM 87505

OIL CONSERVATION DIVISION
2040 South Pacheco
Santa Fe, NM 87505

☐ AMENDED REPORT

WELL LOCATION AND ACREAGE DEDICATION PLAT

API Number 30-015-34376	Pool Code	Pool Name Wildcat A-10A
Property Code	Property Name GOLDFISH FED. 17	Well Number 1
OGRID No. 778	Operator Name BP AMERICA PRODUCTION COMPANY	Elevation 3671'

Surface Location

UL or lot No.	Section	Township	Range	Lot Idn	Feet from the	North/South line	Feet from the	East/West line	County
H	17	17 S	30 E		2055	NORTH	1015	EAST	EDDY

Bottom Hole Location If Different From Surface

UL or lot No.	Section	Township	Range	Lot Idn	Feet from the	North/South line	Feet from the	East/West line	County
H	17	17 S	30 E		1980'	NORTH	1015'	EAST	EDDY

Dedicated Acres 320 AC.	Joint or Infill	Consolidation Code	Order No.
-----------------------------------	-----------------	--------------------	-----------

NO ALLOWABLE WILL BE ASSIGNED TO THIS COMPLETION UNTIL ALL INTERESTS HAVE BEEN CONSOLIDATED OR A NON-STANDARD UNIT HAS BEEN APPROVED BY THE DIVISION

<p>RECEIVED DEC 7 2005 OCC-ARTESIA</p>	<p>Plane Coordinate X = 605,958.9 Y = 668,034.3</p>	<p>3673.2' 3672.3' 3673.1' 3673.9'</p>	<p>2055'</p>	<p>1015'</p>	OPERATOR CERTIFICATION	
					<p>I hereby certify the the information contained herein is true and complete to the best of my knowledge and belief.</p>	
					<p><u>Sue Sellers</u> Signature <u>Sue Sellers</u> Printed Name <u>Regulatory Asst.</u> Title <u>August 15, 2005</u> Date</p>	
					SURVEYOR CERTIFICATION	
<p>I hereby certify that the well location shown on this plat was plotted from field notes of actual surveys made by me or under my supervision and that the same is true and correct to the best of my belief.</p>					<p><u>July 11, 2005</u> Date Surveyed <u>[Signature]</u> Signature & Seal of Professional Surveyor LVA</p>	
<p>NOTE: 1) Plane Coordinates shown hereon are Transverse Mercator Grid and Conform to the "New Mexico Coordinate System", New Mexico East Zone, North American Datum of 1927. Distances shown hereon are mean horizontal surface values.</p>					<p><u>W.O. Num. 2005-0657</u> Certificate No. <u>MACON McDONALD</u> 121</p>	

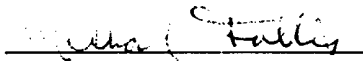
Goldfish 17 Federal #1

Allocation percentages were estimated based on reserve calculations done for both the Morrow and Atoka Formations. Two potential sand pay zones were defined in the Morrow, totaling 5.5' with an average of 5% porosity and a water saturation of 42%. Both of these sands are tight based on the wireline logs but reservoir characteristics may improve away from the wellbore. The Atoka sand calculates out as a higher porosity zone, but with slightly higher water saturations (52% over a 2.5' pay interval with 6.4% porosity).

Because of the poorer quality reservoir encountered in the well, we would like to open both the Morrow and Atoka together to attempt an economic completion. Reserve calculations were done based on 320 acreage drainage for both horizons and the numbers may be skewed high based on that assumption.

Morrow recoverable reserves are estimated at 0.189 BCF and Atoka recoverable reserves are estimated at 0.394 BCF.

Prepared by:

A handwritten signature in dark ink, appearing to read "Michael Follis", is written over a horizontal line.

Michael Follis
Geologist, BP America
SENM, Morrow

Goldfish 17 Federal #1

--GASVOL--

RECOVERABLE GAS RESERVES PROGRAM

WELL NAME: Goldfish

FIELD NAME: Atoka

GAS GRAVITY 0.60

% N2 0.00 %

% CO2 0.00 %

% H2S 0.00 %

CONDENSATE (YES=1) 1

RES. TEMPERATURE 150 F

INITIAL PRESSURE 3,500 Psia

ABANDONMENT PRES 800 Psia

NET PAY 3 Feet

ACRES 320 Acres

WATER SAT 52.00 %

POROSITY 6.40 %

GAS IN PLACE 243,490 Mcf

RECOVERABLE GAS 189,867 Mcf

RECOVERY 77.98%

(C) Copyright 1990,199

by Douglas M Boone

All Rights Reserved

Version 3.0M

22-Nov-05

Tc = 359.26

Pc = 670.98

Tc' = 359.26

Pc' = 670.98

Tr = 1.701

Pri = 5.216

Pra = 1.192

Zi = 0.8939

Za = 0.9278

MCF/AC-FT 237.33

Goldfish 17 Federal #1

--GASVOL--

RECOVERABLE GAS RESERVES PROGRAM

WELL NAME: Goldfish

FIELD NAME: Morrow

GAS GRAVITY 0.60

% N2 0.00 %

% CO2 0.00 %

% H2S 0.00 %

CONDENSATE (YES=1) 1

RES. TEMPERATURE 150 F

INITIAL PRESSURE 3,500 Psia

ABANDONMENT PRES 800 Psia

NET PAY 6 Feet

ACRES 320 Acres

WATER SAT 42.00 %

POROSITY 5.00 %

GAS IN PLACE 505,686 Mcf

RECOVERABLE GAS 394,321 Mcf MCF/AC-FT

RECOVERY 77.98%

(C) Copyright 1990,199

by Douglas M Boone

All Rights Reserved

Version 3.0M

22-Nov-05

Tc = 359.26

Pc = 670.98

Tc' = 359.26

Pc' = 670.98

Tr = 1.701

Pri = 5.216

Pra = 1.192

Zi = 0.8939

Za = 0.9278

224.05

Goldfish Federal 17, # 1
30.015.34376.0000

Completion Procedure Summary for Downhole Commingle

- MIRU service unit.
- PU 2.375" tubing and 4.75" bit. TIH and drill out DV tool. Drill out to FC.
- Circulate hole clean. Pickle tubing and casing with 700 gal. 15% HCl.
- Spot 1000 gal. MOD 101 from 11,000' up. TOH.
- Perforate lower Morrow sand 11,090-11,096', @ 2 jspf.
- Breakdown with 10 bbl KCl water.
- Perforate upper Morrow sand 11,032-11,038' and Atoka sand 10,728-10,734' @ 2 jspf.
- Establish breakdown rate of 5 bpm with 20 bbl KCl water.
- Frac Morrow and Atoka sand down casing @ 50 bpm with 40,000 lb. 30/50 ceramic proppant.
- RDMO frac equipment. Flow back frac.
- Check for proppant fill with sand line. Clean out if required with CT.
- Set production packer with stop $\pm 50'$ above top perforation.
- Test packer.
- RIH with production tubing and circulate packer fluid.
- Sting into packer and retrieve plug.
- Swab and flow.
- Turn over to production. Downhole commingle Morrow & Atoka production

