

DISTRICT I
1625 N. PIERCE DR., ROSA, NM 88240

DISTRICT II
1301 W. GRAND AVENUE, ARTESIA, NM 88210

DISTRICT III
1000 Rio Brazos Rd., Aztec, NM 87410

DISTRICT IV
1220 S. ST. FRANCIS DR., SANTA FE, NM 87505

State of New Mexico
Energy, Minerals and Natural Resources Department

OIL CONSERVATION DIVISION
1220 SOUTH ST. FRANCIS DR.
Santa Fe, New Mexico 87505

NM OIL CONSERVATION
ARTESIA DISTRICT

Form C-102
Revised JUNE 10, 2003
Submit to Appropriate District Office
State Lease - 4 Copies
Fee Lease - 3 Copies

WELL LOCATION AND ACREAGE DEDICATION PLAT

☐ AMENDED REPORT

API Number 30-015-34285	Pool Code 98162	Pool Name WC-015 G-01 S212402M;Yeso
Property Code 308104	Property Name ZEBU STATE	Well Number 1
OGRID No. 229137	Operator Name COG Operating LLC	Elevation 3816'

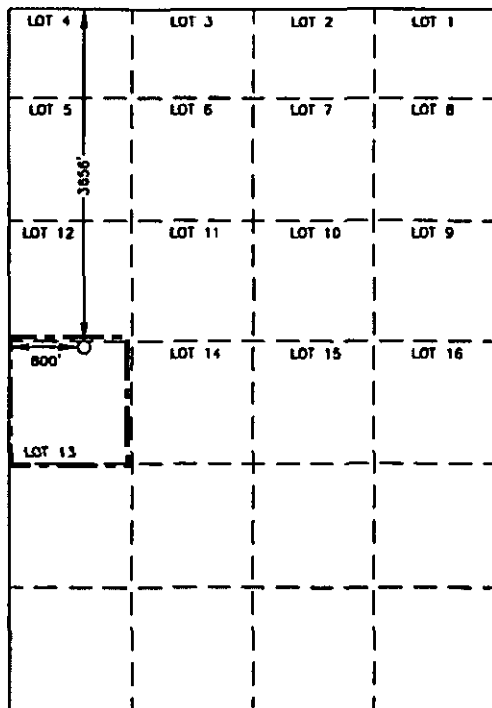
Surface Location

UL or lot No. 13	Section 2	Township 21-S	Range 24-E	Lot Idn	Feet from the 3656	North/South line NORTH	Feet from the 800	East/West line WEST	County EDDY
---------------------	--------------	------------------	---------------	---------	-----------------------	---------------------------	----------------------	------------------------	----------------

Bottom Hole Location If Different From Surface

UL or lot No.	Section	Township	Range	Lot Idn	Feet from the	North/South line	Feet from the	East/West line	County
Dedicated Acres 40	Joint or Infill	Consolidation Code	Order No.						

NO ALLOWABLE WILL BE ASSIGNED TO THIS COMPLETION UNTIL ALL INTERESTS HAVE BEEN CONSOLIDATED
OR A NON-STANDARD UNIT HAS BEEN APPROVED BY THE DIVISION



GEODETIC COORDINATES
NAD 27 NME

Y=550178.0 N

X=456267.3 E

LAT.=32°30'44.89" N
LONG.=104°28'30.73" W

2000 0 2000 4000 Feet
Scale: 1"=2000'

OPERATOR CERTIFICATION

I hereby certify the the information
contained herein is true and complete to the
best of my knowledge and belief.

Signature

Kanicia Castillo

Printed Name

Lead Regulatory Analyst

Title

10/1/15

Date

SURVEYOR CERTIFICATION

I hereby certify that the well location shown
on this plat was plotted from field notes of
actual surveys made by me or under my
supervision, and that the same is true and
correct to the best of my belief.

FEBRUARY 28, 2005

Date Surveyed Signature Professional Surveyor	JR
Certified by Professional Surveyor	12641