

District I
1625 N. French Dr., Hobbs, NM 88240
Phone: (575) 393-6161 Fax: (575) 393-0720
District II
811 S. Fusa St., Artesia, NM 88210
Phone: (575) 748-1283 Fax: (575) 748-9720
District III
1000 Rio Brazos Road, Aztec, NM 87410
Phone: (505) 334-6178 Fax: (505) 334-6170
District IV
1220 S. St. Francis Dr., Santa Fe, NM 87505
Phone: (505) 476-3460 Fax: (505) 476-3462

State of New Mexico
Energy, Minerals & Natural Resources Department
OIL CONSERVATION DIVISION
1220 South St. Francis Dr.
Santa Fe, NM 87505

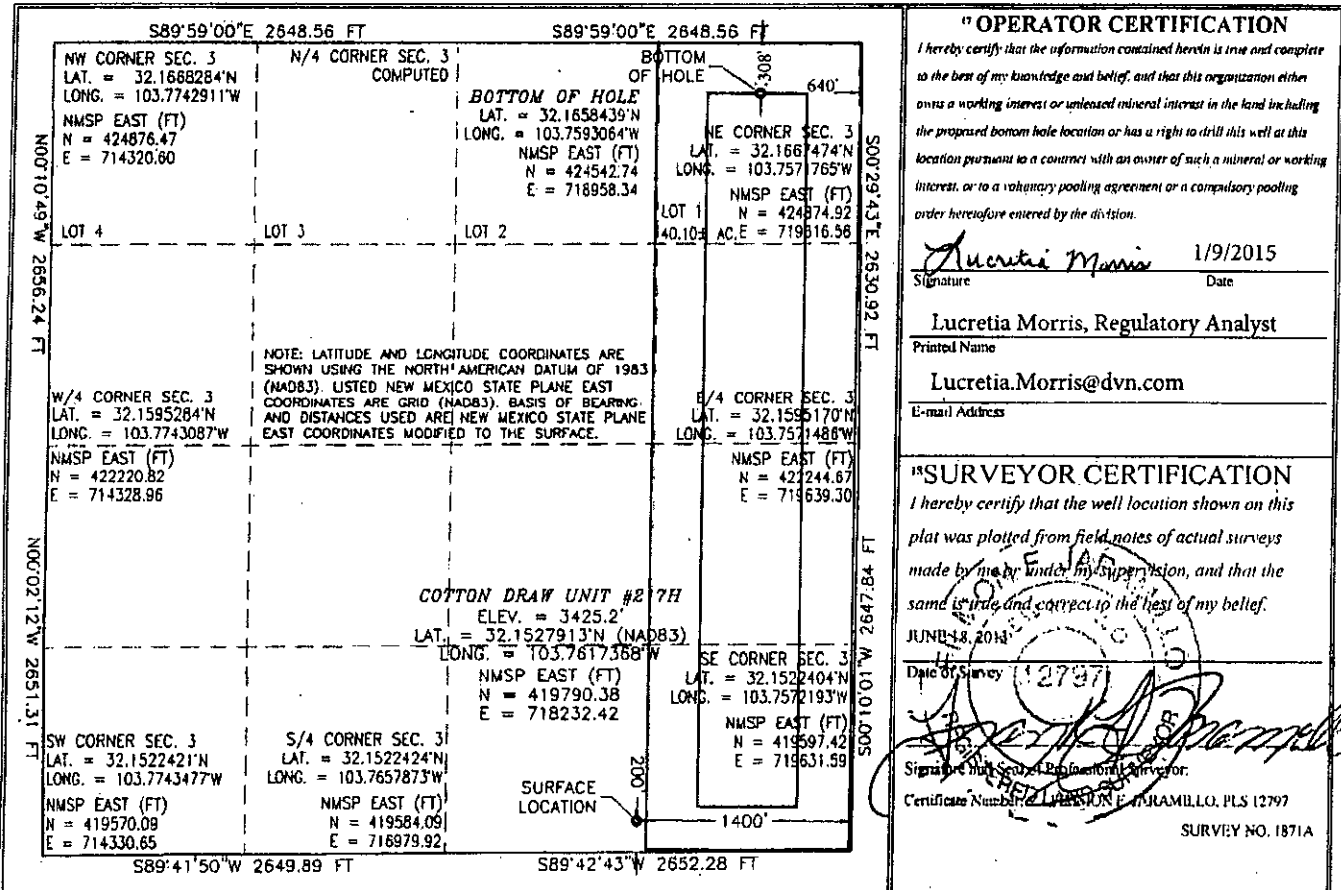
Form C-102
Revised August 1, 2011
Submit one copy to appropriate
District Office

AMENDED REPORT

WELL LOCATION AND ACREAGE DEDICATION PLAT

¹ API Number 30-015-42318		² Pool Code 96641		³ Pool Name Paduca; Bone Spring					
⁴ Property Code 300635		⁵ Property Name COTTON DRAW UNIT				⁶ Well Number 217H			
⁷ OGRID No. 6137		⁸ Operator Name DEVON ENERGY PRODUCTION COMPANY, L.P.				⁹ Elevation 3425.2			
¹⁰ Surface Location									
UL or lot no. O	Section 3	Township 25 S	Range 31 E	Lot Idn	Feet from the 200	North/South line SOUTH	Feet from the 1400	East/West line EAST	County EDDY
¹¹ Bottom Hole Location If Different From Surface									
UL or lot no. 1	Section 3	Township 25 S	Range 31 E	Lot Idn	Feet from the 308	North/South line NORTH	Feet from the 640	East/West line EAST	County EDDY
¹² Dedicated Acres 159.62		¹³ Joint or Infill		¹⁴ Consolidation Code		¹⁵ Order No.			

No allowable will be assigned to this completion until all interests have been consolidated or a non-standard unit has been approved by the division.



" OPERATOR CERTIFICATION
I hereby certify that the information contained herein is true and complete to the best of my knowledge and belief, and that this organization either owns a working interest or unleased mineral interest in the land including the proposed bottom hole location or has a right to drill this well at this location pursuant to a contract with an owner of such a mineral or working interest, or to a voluntary pooling agreement or a compulsory pooling order heretofore entered by the division.

Lucretia Morris 1/9/2015
Signature Date

Lucretia Morris, Regulatory Analyst
Printed Name

Lucretia.Morris@dvn.com
E-mail Address

"SURVEYOR CERTIFICATION
I hereby certify that the well location shown on this plat was plotted from field notes of actual surveys made by me or under my supervision, and that the same is true and correct to the best of my belief.

JUN 18 2014
Date of Survey (12797)

[Signature]
Signature of Licensed Professional Surveyor

Certificate Number: 21 JUANILLO, PLS 12797
SURVEY NO. 1871A

PP: 183' FSL & 822' FEL, Sec 3, T25S, R31E

Project Area: [REDACTED]
Producing Area: [REDACTED]