

EC 7025

H-44

Form 3160-3
(August 1999)

OCD-ARTESIA

FORM APPROVED
OMB No. 1004-0136
Expires November 30, 2000

UNITED STATES
DEPARTMENT OF THE INTERIOR
BUREAU OF LAND MANAGEMENT

0617

APPLICATION FOR PERMIT TO DRILL OR REENTER

5. Lease Serial No.
NMLC060613

6. If Indian, Allottee or Tribe Name

7. If Unit or CA Agreement, Name and No.
NMNM68294X

8. Lease Name and Well No.
BIG EDDY UNIT 147

9. API Well No.
30-015-32859

10. Field and Pool, or Exploratory
WILDCAT MORROW
E CARLSBAD-MORROW

11. Sec., T., R., M., or Blk. and Survey or Area
Sec 6 T22S R28E Mer NMP
SME: BLM

12. County or Parish
EDDY

13. State
NM

17. Spacing Unit dedicated to this well
320.00

20. BLM/BIA Bond No. on file

23. Estimated duration
45 DAYS

1a. Type of Work: DRILL REENTER

CONFIDENTIAL

1b. Type of Well: Oil Well Gas Well Other Single Zone Multiple Zone

2. Name of Operator
BASS ENTERPRISES PRODUCTION CO
Contact: TAMI WILBER
E-Mail: twilber@basspet.com

3a. Address
P O BOX 2760
MIDLAND, TX 79702

3b. Phone No. (include area code)
Ph: 432.683.2277
Fx: 432.687.0329

4. Location of Well (Report location clearly and in accordance with any State requirements.*)

At surface NENW 660FNL 1980FWL
At proposed prod. zone NENW 660FNL 1980FWL

14. Distance in miles and direction from nearest town or post office*
9 MILES EAST OF CARLSBAD NM

15. Distance from proposed location to nearest property or lease line, ft. (Also to nearest drig. unit line, if any)
660

16. No. of Acres in Lease
RECEIVED
OCD - ARTESIA
JUL 2003

18. Distance from proposed location to nearest well, drilling, completed, applied for, on this lease, ft.
4742

19. Proposed Depth
12600 MD

21. Elevations (Show whether DF, KB, RT, GL, etc.)
3146 GL

22. Approximate date work will start
07/15/2003

24. Attachments CARLSBAD CONTROLLED WATER BASIN

The following, completed in accordance with the requirements of Onshore Oil and Gas Order No. 1, shall be attached to this form:

- 1. Well plat certified by a registered surveyor.
- 2. A Drilling Plan.
- 3. A Surface Use Plan (if the location is on National Forest System Lands, the SUPO shall be filed with the appropriate Forest Service Office).

- 4. Bond to cover the operations unless covered by an existing bond on file (see Item 20 above).
- 5. Operator certification
- 6. Such other site specific information and/or plans as may be required by the authorized officer.

25. Signature (Electronic Submission) Name (Printed/Typed) TAMI WILBER Date 05/22/2003

Title
PRODUCTION CLERK

Approved by (Signature) /s/ LESLIE A. THEISS Name (Printed/Typed) /s/ LESLIE A. THEISS Date JUN 30 2003

Title FIELD MANAGER Office CARLSBAD FIELD OFFICE

Application approval does not warrant or certify the applicant holds legal or equitable title to those rights in the subject lease which would entitle the applicant to conduct operations thereon.
Conditions of approval, if any, are attached. APPROVAL FOR 1 YEAR

Title 18 U.S.C. Section 1001 and Title 43 U.S.C. Section 1212, make it a crime for any person knowingly and willfully to make to any department or agency of the United States any false, fictitious or fraudulent statements or representations as to any matter within its jurisdiction.

Additional Operator Remarks (see next page)

Electronic Submission #22169 verified by the BLM Well Information System
For BASS ENTERPRISES PRODUCTION CO, sent to the Carlsbad
Committed to AFMSS for processing by Linda Askwig on 05/27/2003 (03LA0535AE)

APPROVAL SUBJECT TO
GENERAL REQUIREMENTS
AND SPECIAL STIPULATIONS
ATTACHED

** BLM REVISED ** BLM REVISED ** BLM REVISED ** BLM REVISED ** BLM REVISED **

DISTRICT I

1225 N. French Dr., Hobbs, NM 88240

DISTRICT II

511 South First, Artesia, NM 88210

DISTRICT III

1000 Elie Brazos Rd., Artesia, NM 87410

DISTRICT IV

2040 South Pacheco, Santa Fe, NM 87505

State of New Mexico

Energy, Minerals and Natural Resources Department

Form C-102
Revised March 17, 1998

Submit to Appropriate District Office
State Lease - 4 Copies
Fee Lease - 5 Copies

OIL CONSERVATION DIVISION

2040 South Pacheco
Santa Fe, New Mexico 87504-2088

☐ AMENDED REPORT

WELL LOCATION AND ACREAGE DEDICATION PLAT

API Number	Pool Code	Pool Name
		East Carlsbad (Morrow)
Property Code	Property Name	Well Number
001775	BIG EDDY UNIT	147
OGED No.	Operator Name	Elevation
001801	BASS ENTERPRISES PRODUCTION COMPANY	3146'

Surface Location

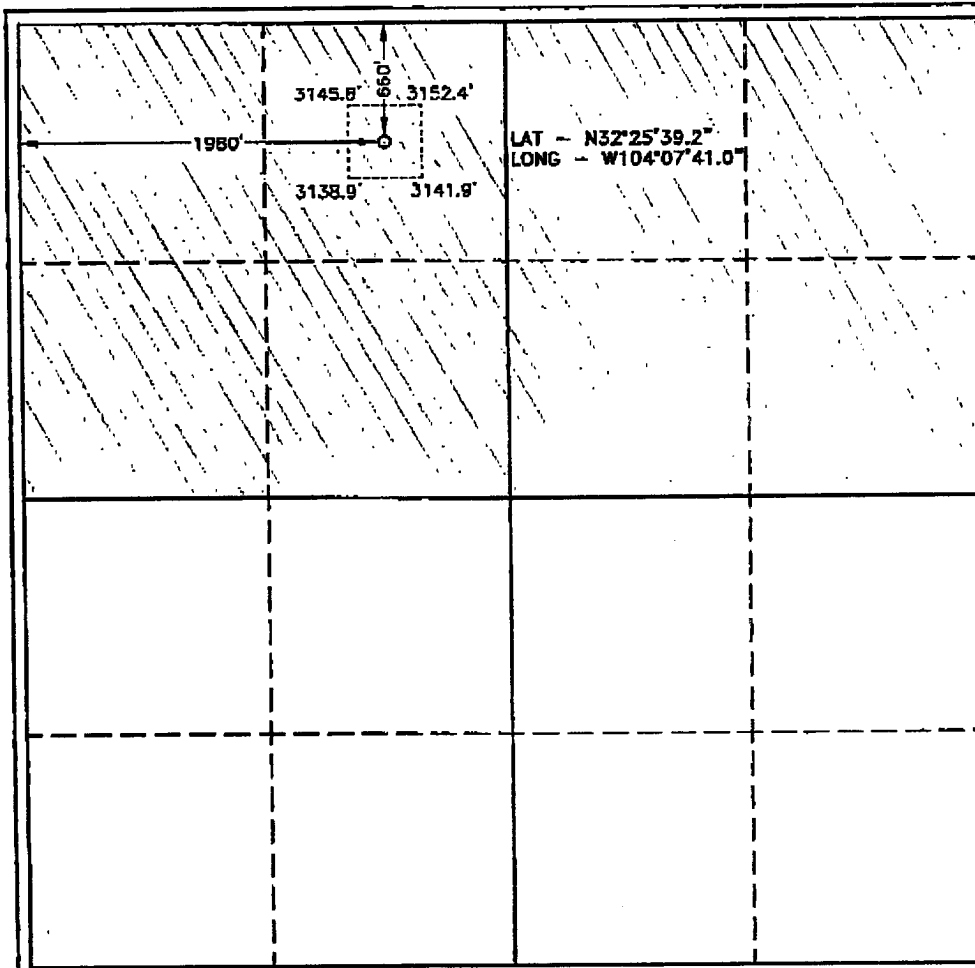
UL or lot No.	Section	Township	Range	Lot Idn	Feet from the	North/South line	Feet from the	East/West line	County
C	6	22 S	28 E		660	NORTH	1980	WEST	EDDY

Bottom Hole Location If Different From Surface

UL or lot No.	Section	Township	Range	Lot Idn	Feet from the	North/South line	Feet from the	East/West line	County

Dedicated Acres	Joint or Infill	Consolidation Code	Order No.
320			

NO ALLOWABLE WILL BE ASSIGNED TO THIS COMPLETION UNTIL ALL INTERESTS HAVE BEEN CONSOLIDATED OR A NON-STANDARD UNIT HAS BEEN APPROVED BY THE DIVISION



OPERATOR CERTIFICATION

I hereby certify that the information contained herein is true and complete to the best of my knowledge and belief.

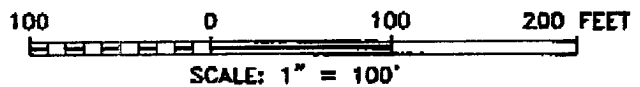
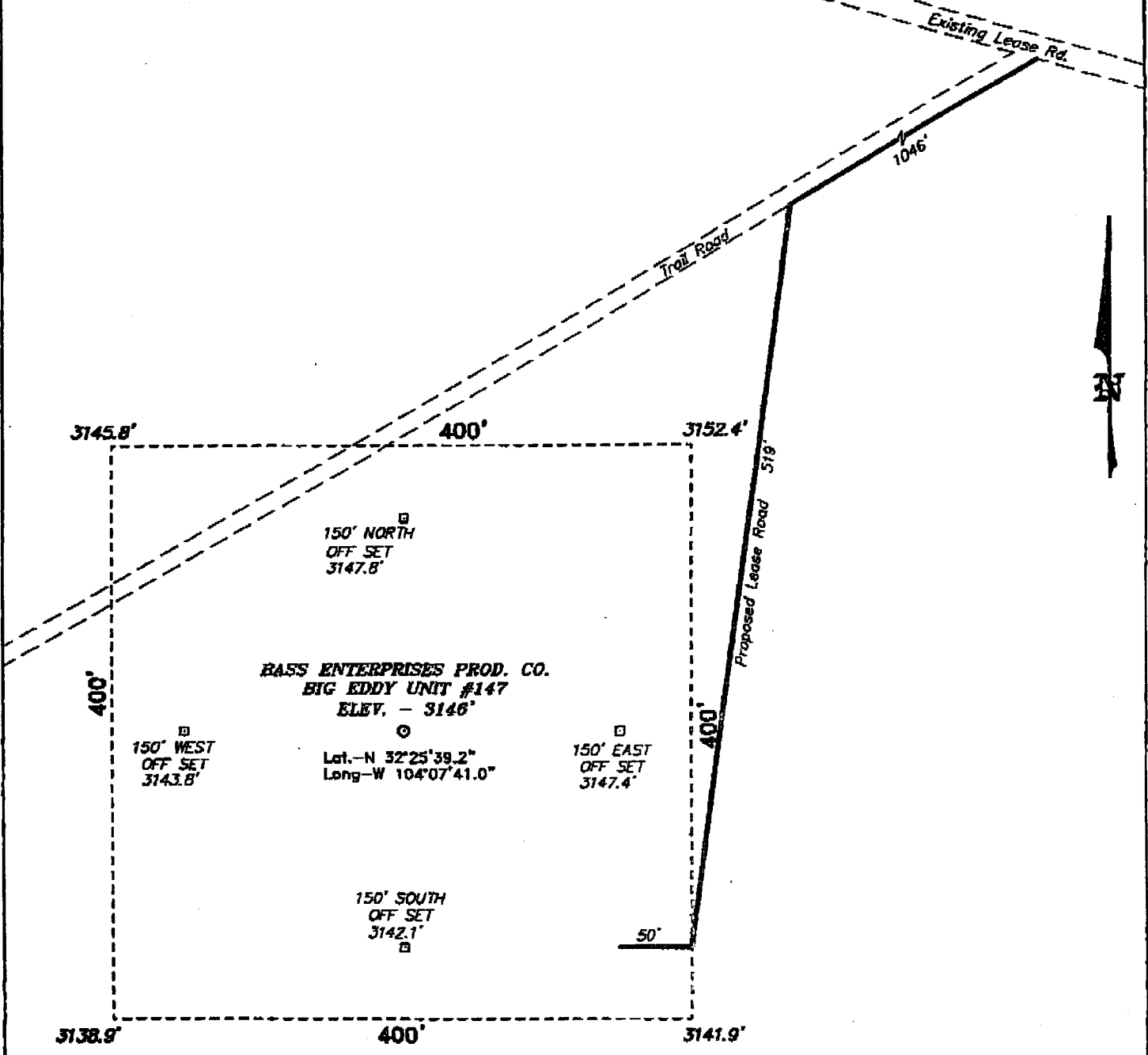
William R. Dannels
Signature
W.R. DANNELS
Printed Name
DIVISION DRILLING SUPT.
Title
5/21/03
Date

SURVEYOR CERTIFICATION

I hereby certify that the well location shown on this plat was plotted from field notes of actual surveys made by me or under my supervision, and that the same is true and correct to the best of my knowledge.

GARY L. JONES
MARCH 28, 2003
Date Surveyed
Signature and Seal of Professional Surveyor
W.O. No. 515
Certificate No. Gary L. Jones 7977
BASIN SURVEYS

**SECTION 6, TOWNSHIP 22 SOUTH, RANGE 28 EAST, N.M.P.M.,
EDDY COUNTY,
NEW MEXICO.**



DIRECTIONS TO LOCATION:

FROM THE JUNCTION OF CO. RD. 603A AND US HWY 62/180, GO SOUTHWEST ON HWY 62/180 FOR APPROX. 4.75 MILES TO A LEASE ROAD; THENCE EASTERLY FOR APPROX. 3.5 MILES TO PROPOSED LEASE ROAD AND TRAIL ROAD.

BASIN SURVEYS P.O. BOX 1786 - HOBBS, NEW MEXICO

W.O. Number: 3161

Drawn By: **K. GOAD**

Date: 04-01-2003

Disk: KJG CD#7 - 3161A.DWG

BASS ENTERPRISES PRODUCTION CO.

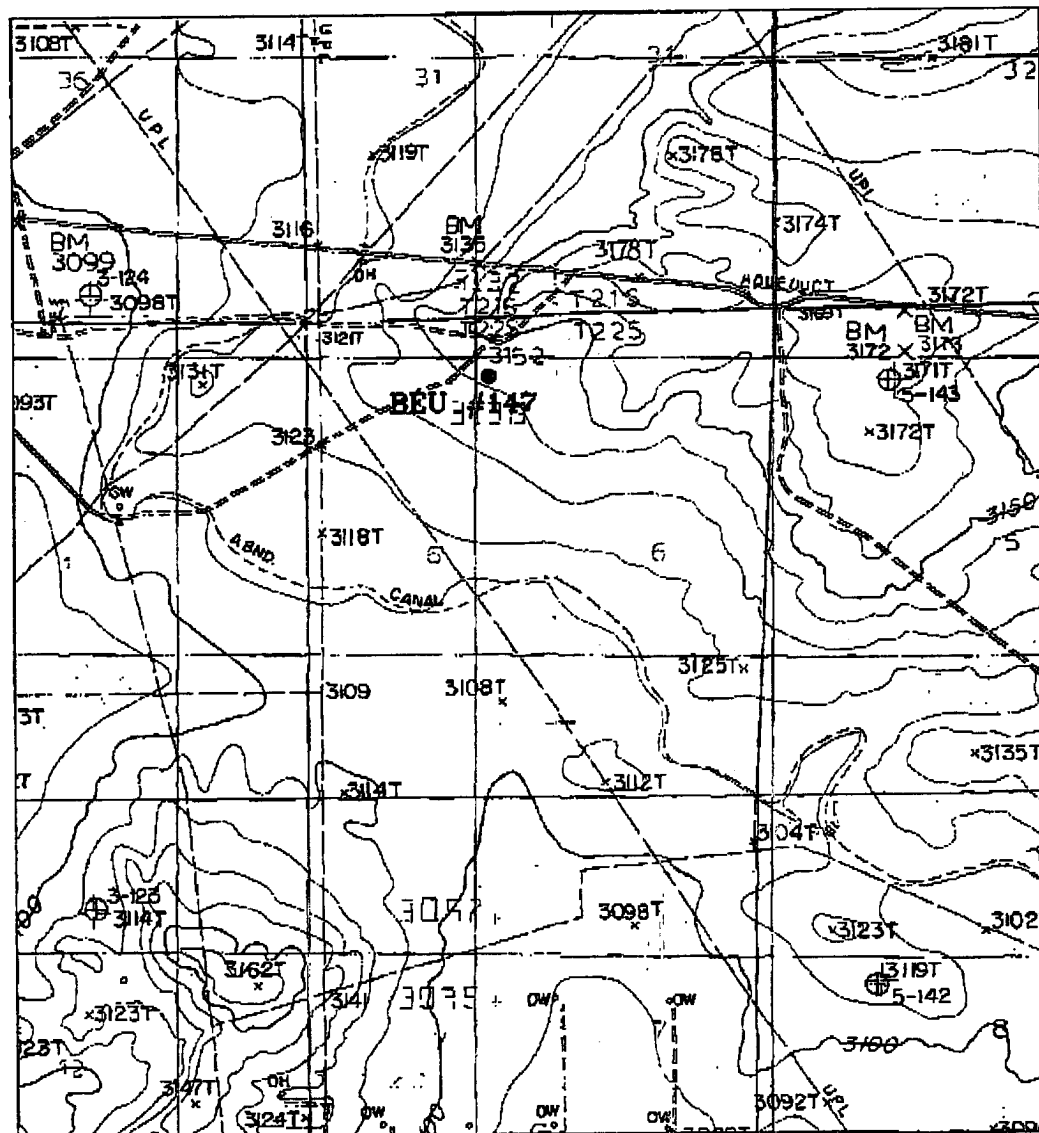
REF: BIG EDDY UNIT No. 147 / Well Pad Topo

THE BIG EDDY UNIT No. 147 LOCATED 660' FROM THE NORTH LINE AND 1980' FROM THE WEST LINE OF SECTION 6, TOWNSHIP 22 SOUTH, RANGE 28 EAST,

N.M.P.M., EDDY COUNTY, NEW MEXICO.

Survey Date: 03-28-2003

Sheet 1 of 1 Sheets



BIG EDDY UNIT #147

Located at 660' FNL and 1980' FWL
 Section 6, Township 22 South, Range 28 East,
 N.M.P.M., Eddy County, New Mexico.



focused on excellence
 in the oilfield

P.O. Box 1786
 1120 N. West County Rd.
 Hobbs, New Mexico 88241
 (505) 393-7316 - Office
 (505) 392-3074 - Fax
 basinsurveys.com

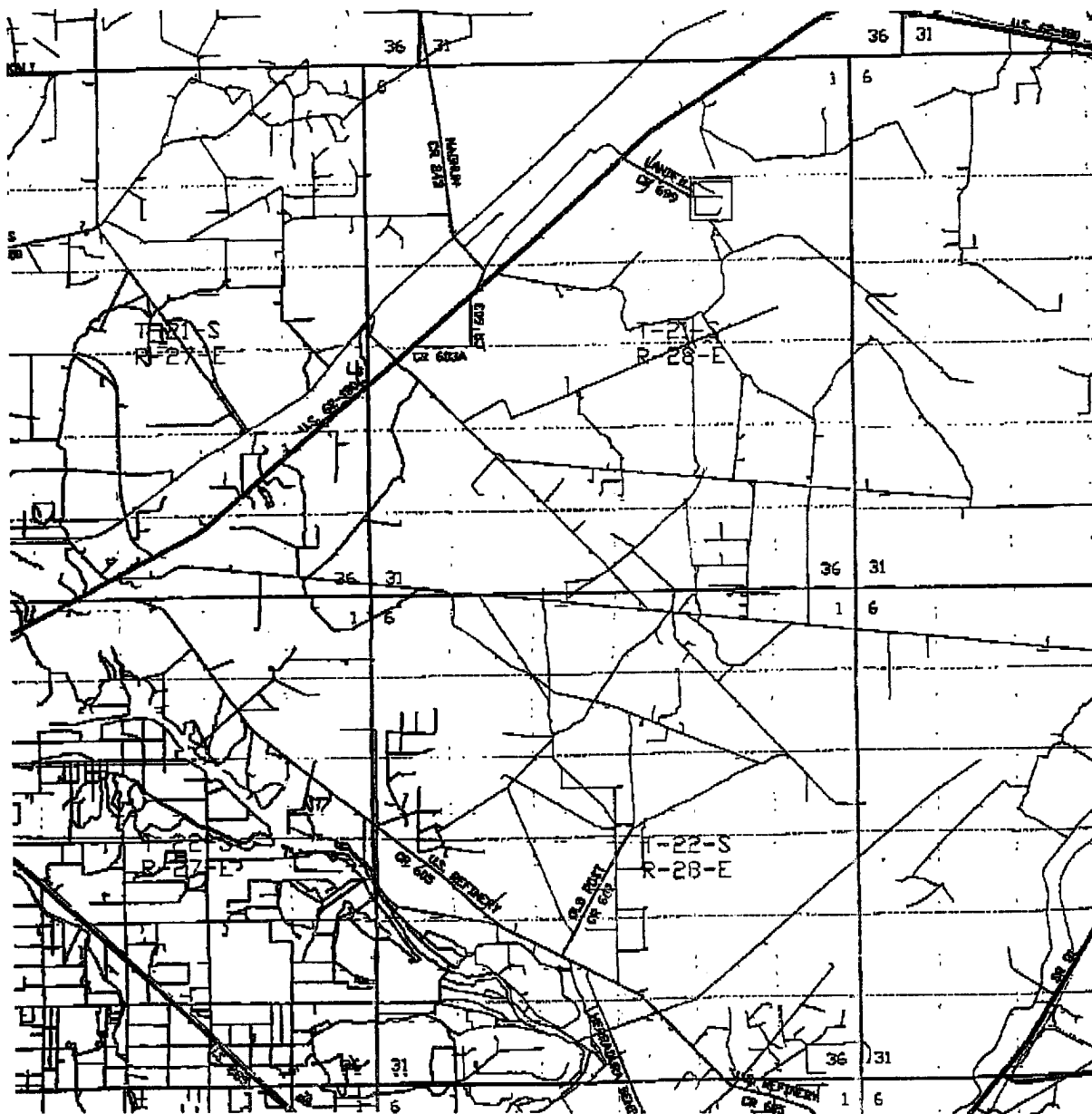
W.O. Number: 3161AA - KJG #7

Survey Date: 03-28-2003

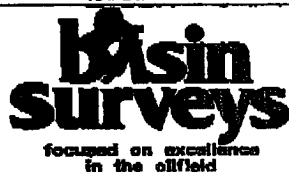
Scale: 1" = 2000'

Date: 04-01-2003

**BASS ENTERPRISES
 PRODUCTION CO.**



BIG EDDY UNIT #147
 Located at 660' FNL and 1980' FWL
 Section 6, Township 22 South, Range 28 East,
 N.M.P.M., Eddy County, New Mexico.



P.O. Box 1788
 1120 N. West County Rd.
 Hobbs, New Mexico 88241
 (505) 393-7316 - Office
 (505) 392-3074 - Fax
 basinsurveys.com

W.O. Number: 3161AA - KJG #7

Survey Date: 03-28-2003

Scale: 1" = 2 MILES

Date: 04-01-2003

**BASS ENTERPRISES
 PRODUCTION CO.**

**EIGHT POINT DRILLING PROGRAM
BASS ENTERPRISES PRODUCTION CO.**

NAME OF WELL: BIG EDDY UNIT #147

LEGAL DESCRIPTION - SURFACE: 660' FNL & 1980' FWL, Section 6, T22S, R28E, Eddy County, New Mexico.

POINT 1: ESTIMATED FORMATION TOPS

(See No. 2 Below)

POINT 2: WATER, OIL, GAS AND/OR MINERAL BEARING FORMATIONS

Anticipated Formation Tops: KB 3168' (est)
GL 3146'

<u>FORMATION</u>	<u>ESTIMATED TOP FROM KB</u>	<u>ESTIMATED SUBSEA TOP</u>	<u>BEARING</u>
T/Rustler	338'	+ 2,830'	Barren
T/Delaware Sands	2,368'	+ 800'	Oil/Gas
T/Bone Spring	5,768'	- 2,600'	Oil/Gas
T/Wolfcamp	9,218'	- 6,052'	Oil/Gas
T/Strawn	10,503'	- 7,335'	Oil/Gas
T/Strawn "C"	10,758'	- 7,590'	Oil/Gas
T/Atoka	10,893'	- 7,725'	Oil/Gas
T/Morrow	11,498'	- 8,330'	Oil/Gas
TD	12,600'	- 9,432'	

POINT 3: CASING PROGRAM

<u>TYPE</u>	<u>INTERVALS</u>	<u>PURPOSE</u>	<u>CONDITION</u>
20"	0' - 40'	Conductor	Contractor Discretion
13-3/8", 54.5#, J-55, STC	0' - 500'	Surface	New
9-5/8", 40#, N80, LTC	0' - 1,000'	Intermediate	New
9-5/8", 40#, K-55, LTC	1,000' - 2,700'	Intermediate	New
7", 26#, P-110, LTC	0' - 11,000'	Intermediate	New
7", 26#, S-95, LTC	11,000' - 11,200'	Intermediate	New
5", 18#, P110, STL	10,800' - 12,600'	Production Liner	New

WITNESS

POINT 4: PRESSURE CONTROL EQUIPMENT (SEE ATTACHED DIAGRAM)

A rotating head will be nipped up on the surface casing. The rotating head will not be hydro-tested.

A BOP equivalent to Diagram 1 will be nipped up on the first and second intermediate casings. The BOP stack, choke, kill lines, kelly cocks, inside BOP, etc. will be hydro-tested to 5,000 psi on the first intermediate and the second intermediate casing. The annular will be tested to 2500 psi. In addition to the rated working pressure test, a low pressure (250 psi) test will be required. These tests will be performed:

- a) Upon installation
- b) After any component changes
- c) Twenty-one days after a previous test
- d) As required by well conditions

A function test to insure that the preventers are operating correctly will be performed on each trip. See the attached Diagram 1 for the minimum criteria for the choke manifold.

POINT 5: MUD PROGRAM

<u>DEPTH</u>	<u>MUD TYPE</u>	<u>WEIGHT</u>	<u>FV</u>	<u>PV</u>	<u>YP</u>	<u>FL</u>	<u>Ph</u>
0' - 500'	FW	8.5 - 9.2	45-35	NC	NC	NC	9.5
500' - 2,700'	BW	10.0 - 10.2	28-30	NC	NC	NC	9.5
2,540' - 9,000'	FW	8.6 - 8.9	28-30	4	2	NC	9.5
9,000' - 11,200'	CBW	8.9 - 11.5	28-30	6	4	<20	9.5
11,200' - TD	CBW/Polymer	9.0 - 9.5	32-55	12-20	12-22	10-15	9.5-10.0

POINT 6: TECHNICAL STAGES OF OPERATION**A) TESTING**

Drill stem tests may be performed on significant shows in zones of interest, but none are anticipated.

B) LOGGING

Run #1:

GR-CNL-LDT-LLD run from 11,200' to TD to first ICP, GR-CNL to surface. May run logging suite across Delaware prior to drilling below 6000' if mud log shows warrant.

Run #2:

GR-CNL-LDT-LLD run from TD to second ICP, FMI as required.

C) CORING

No cores are anticipated.

D) CEMENT

<u>INTERVAL</u>	<u>AMOUNT SX</u>	<u>FT OF FILL</u>	<u>TYPE</u>	<u>GALS/SX</u>	<u>PPG</u>	<u>FT³/SX</u>
SURFACE						
Lead 0' - 200' (100% excess)	170	200	Permian Basin Critical + Zone + Pol-e-flake	10.30	12.80	1.89
Tail 200'-500' (100% Excess)	340	300	Premium Plus + 2% CaCl ₂ + 1/8#/sx Pol-e-flake	6.32	14.80	1.34
INTERMEDIATE						
<u>INTERVAL</u>	<u>AMOUNT SXS</u>	<u>FT OF FILL</u>	<u>TYPE</u>	<u>GALS/SX</u>	<u>PPG</u>	<u>FT³/SX</u>
Lead 0' - 2265' (100% Excess)	590	2265	Interfill C + 1/8#/sx + Pol-e-flake	14.10	11.90	2.45
Tail 2265' - 2700' (100% Excess)	235	435	Premium Plus + 2% CaCl ₂	6.34	14.80	1.34
PRODUCTION (Two stage w/DV tool @ 8000' and circulate cement to 2000')						
<u>INTERVAL</u>	<u>AMOUNT SXS</u>	<u>FILL</u>	<u>TYPE</u>	<u>GALS/SX</u>	<u>PPG</u>	<u>FT³/SX</u>
1st Stage						
LEAD 8000'-10,500' (50% excess)	225	2500	Interfill H + 5pps Gilsomite + 0.5% Halad 9 + 1/8 pps Pol-e-flake	13.61	11.90	2.46
TAIL 10,500'-11,200' (50% excess)	100	700	Super H + 0.5% Halad 344 + 0.4% CFR3 + 5 pps Gilsomite + 1 pps Salt + 0.2% HRT	8.20	13.00	1.67
2nd Stage						
LEAD 2000'-7,300' (50% excess)	495	5300	Interfill H + 1/8 pps Pol-e-flake + 0.5% Halad 9	14.00	11.90	2.45
TAIL 7,300'-8,000' (50% excess)	100	700	Super H + 0.5% Halad 344 + 0.4% CFR3 + 5 pps Gilsomite + 1 pps Salt + 0.2% HRT	8.20	13.00	1.67
PRODUCTION LINER						
10,800'-12,600' (25% excess)	155	1800	Class H + 0.8% Halad 322 + 0.6% Halad 344 + 0.2% HR-7 + 5pps Microbond M	5.68	15.40	1.28

E) DIRECTIONAL DRILLING

No directional services anticipated. A straight hole will be drilled to 12,500' TD.

POINT 7: ANTICIPATED RESERVOIR CONDITIONS

Normal pressures are anticipated throughout the Delaware, Bone Spring & Wolfcamp sections. The Strawn expected BHP is 5515 (max) or an equivalent mud weight of 10.0 ppg. The Morrow will be normally pressured. Due to the tight nature of the reservoir rock (high pressure, low volume), the well will be drilled under balanced utilizing a rotating head. The expected BHT at TD is 200°F. No H₂S is anticipated.

POINT 8: OTHER PERTINENT INFORMATION

A) Auxiliary Equipment

Upper and lower kelly cocks. Full opening stab in valve on the rig floor.

B) Anticipated Starting Date

Upon approval

45 days drilling operations

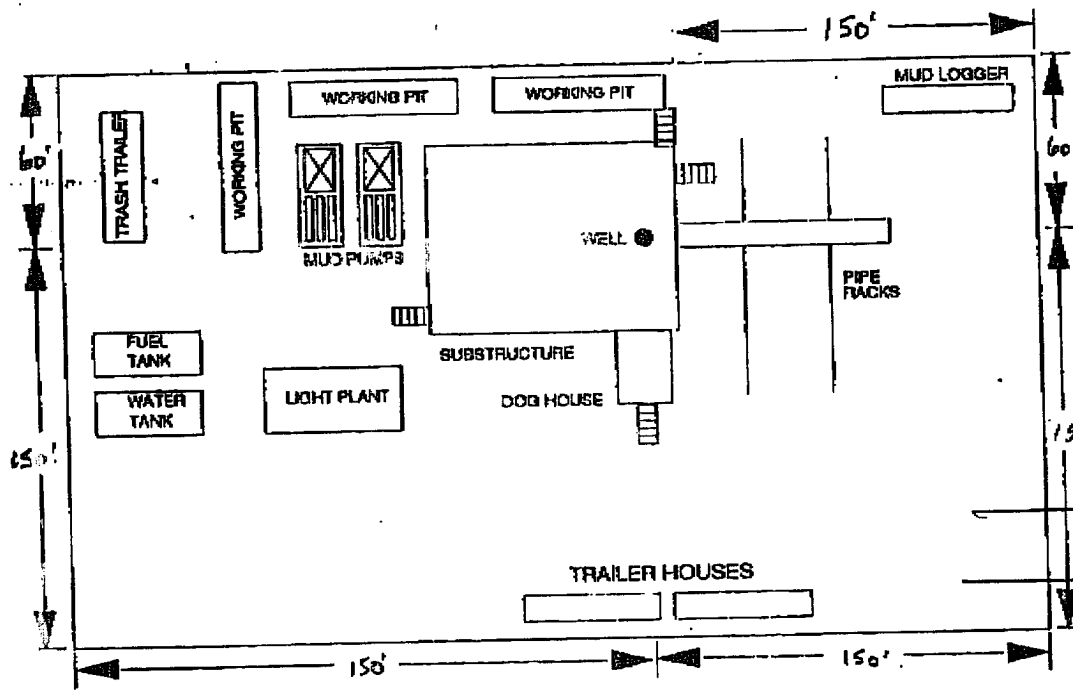
20 days completion operations

May 21, 2003
Date

William R. Dannels
William R. Dannels

WRD/tw

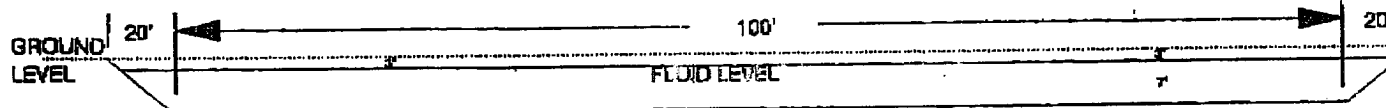
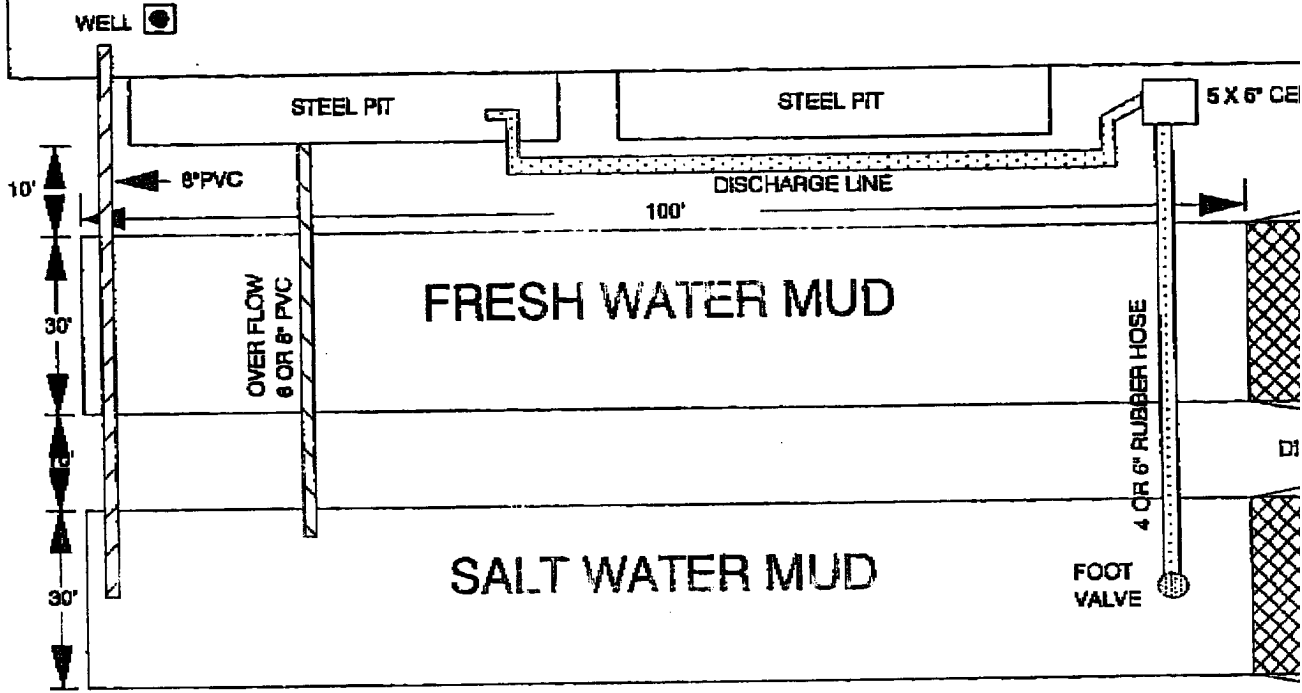
RESERVE PIT



BASS ENTERPRISES PRODUCTION COMPANY

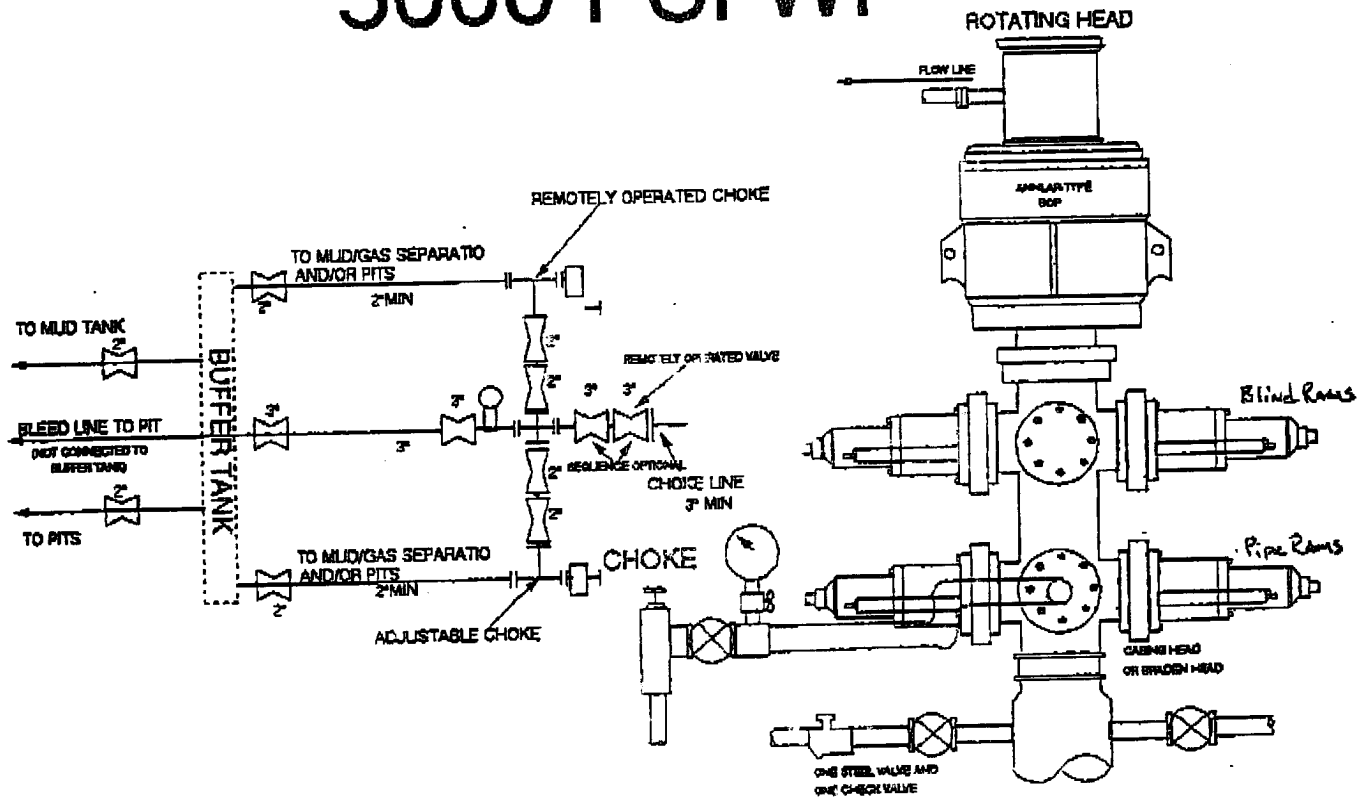
PIT DIAGRAM

OVER 8500'



LINE PITS WITH 20 MILL PLASTIC

5000 PSI WP



THE FOLLOWING CONSTITUTE MINIMUM FLOWOUT PREVENTER REQUIREMENTS

- A. One double gate blowout preventer with lower rams for pipe and upper rams blind, all hydraulically controlled.
- B. Opening on preventers between rams to be flanged, studded or clamped and at least two inches in diameter.
- C. All connections from operating manifold to preventers to be all steel hose or tube a minimum of one inch in diameter.
- D. The available closing pressure shall be at least 15% in excess of that required with sufficient volume to operate (close, open, and re-close) the preventers.
- E. All connections to and from preventers to have a pressure rating equivalent to that of the BOP's.
- F. Manual controls to be installed before drilling cement plug.
- G. Valve to control flow through drill pipe to be located on rig floor.
- H. All chokes will be adjustable. Choke spool may be used between rams.

DIAGRAM 1