

UNITED STATES
DEPARTMENT OF THE INTERIOR
BUREAU OF LAND MANAGEMENT

SUNDRY NOTICES AND REPORTS ON WELLS

Do not use this form for proposals to drill or to re-enter an abandoned well. Use form 3160-3 (APD) for such proposals.

SUBMIT IN TRIPLICATE - Other instructions on reverse side.

1. Type of Well <input type="checkbox"/> Oil Well <input type="checkbox"/> Gas Well <input checked="" type="checkbox"/> Other: INJECTION		8. Well Name and No. WEST BRUSHY 5 FEDERAL SWD 5
2. Name of Operator COG OPERATING LLC Contact: STORMI DAVIS E-Mail: sdavis@concho.com		9. API Well No. 30-015-31869-00-S1
3a. Address 600 W ILLINOIS AVENUE MIDLAND, TX 79701	3b. Phone No. (include area code) Ph: 575-748-6946	10. Field and Pool, or Exploratory BRUSHY DRAW
4. Location of Well (Footage, Sec., T., R., M., or Survey Description) Sec 5 T26S R29E SESE 800FSL 850FEL		11. County or Parish, and State EDDY COUNTY, NM

12. CHECK APPROPRIATE BOX(ES) TO INDICATE NATURE OF NOTICE, REPORT, OR OTHER DATA

TYPE OF SUBMISSION	TYPE OF ACTION			
<input type="checkbox"/> Notice of Intent	<input type="checkbox"/> Acidize	<input type="checkbox"/> Deepen	<input type="checkbox"/> Production (Start/Resume)	<input type="checkbox"/> Water Shut-Off
<input checked="" type="checkbox"/> Subsequent Report	<input type="checkbox"/> Alter Casing	<input type="checkbox"/> Fracture Treat	<input type="checkbox"/> Reclamation	<input type="checkbox"/> Well Integrity
<input type="checkbox"/> Final Abandonment Notice	<input type="checkbox"/> Casing Repair	<input type="checkbox"/> New Construction	<input type="checkbox"/> Recomplete	<input checked="" type="checkbox"/> Other
	<input type="checkbox"/> Change Plans	<input type="checkbox"/> Plug and Abandon	<input type="checkbox"/> Temporarily Abandon	
	<input type="checkbox"/> Convert to Injection	<input type="checkbox"/> Plug Back	<input type="checkbox"/> Water Disposal	

13. Describe Proposed or Completed Operation (clearly state all pertinent details, including estimated starting date of any proposed work and approximate duration thereof. If the proposal is to deepen directionally or recomple horizontally, give subsurface locations and measured and true vertical depths of all pertinent markers and zones. Attach the Bond under which the work will be performed or provide the Bond No. on file with BLM/BIA. Required subsequent reports shall be filed within 30 days following completion of the involved operations. If the operation results in a multiple completion or recompletion in a new interval, a Form 3160-4 shall be filed once testing has been completed. Final Abandonment Notices shall be filed only after all requirements, including reclamation, have been completed, and the operator has determined that the site is ready for final inspection.)

11/25/14 to 12/5/14 MIRU WSU. Unseat pkr & POOH w/pkr & tbg. RIH w/RBP & pkr. Test csg to 1000#. Good test. Latch onto RBP & lay down WS. RIH w/new tbg & pkr & set @ 4287'. Test csg to 500#. Good test. Pump 95 bbls pkr fluid. Test to 540# for 30 mins. Ran MIT for OCD & BLM to 560# for 30 mins. No leak-off. Witnessed by Paul Swartz & Richard Inge.

Chart is attached.

NM OIL CONSERVATION
ARTESIA DISTRICT

NOV 30 2015

SUBJECT TO LIKE
APPROVAL BY STATE

RECEIVED

Accepted for record
12/1/15
NIMOOD

14. I hereby certify that the foregoing is true and correct. Electronic Submission #288340 verified by the BLM Well Information System For COG OPERATING LLC, sent to the Carlsbad Committed to AFMSS for processing by JAMIE RHOADES on 09/10/2015 (15JLR0335SE)	
Name (Printed/Typed) STORMI DAVIS	Title PREPARER
Signature (Electronic Submission)	Date 01/16/2015
THIS SPACE FOR FEDERAL OR STATE OFFICE USE	
Approved By _____	Title _____
Conditions of approval, if any, are attached. Approval of this notice does not warrant or certify that the applicant holds legal or equitable title to those rights in the subject lease which would entitle the applicant to conduct operations thereon.	Office _____
Title 18 U.S.C. Section 1001 and Title 43 U.S.C. Section 1212, make it a crime for any person knowingly and willfully to make any false, fictitious or fraudulent statements or representations as to any matter within its jurisdiction.	

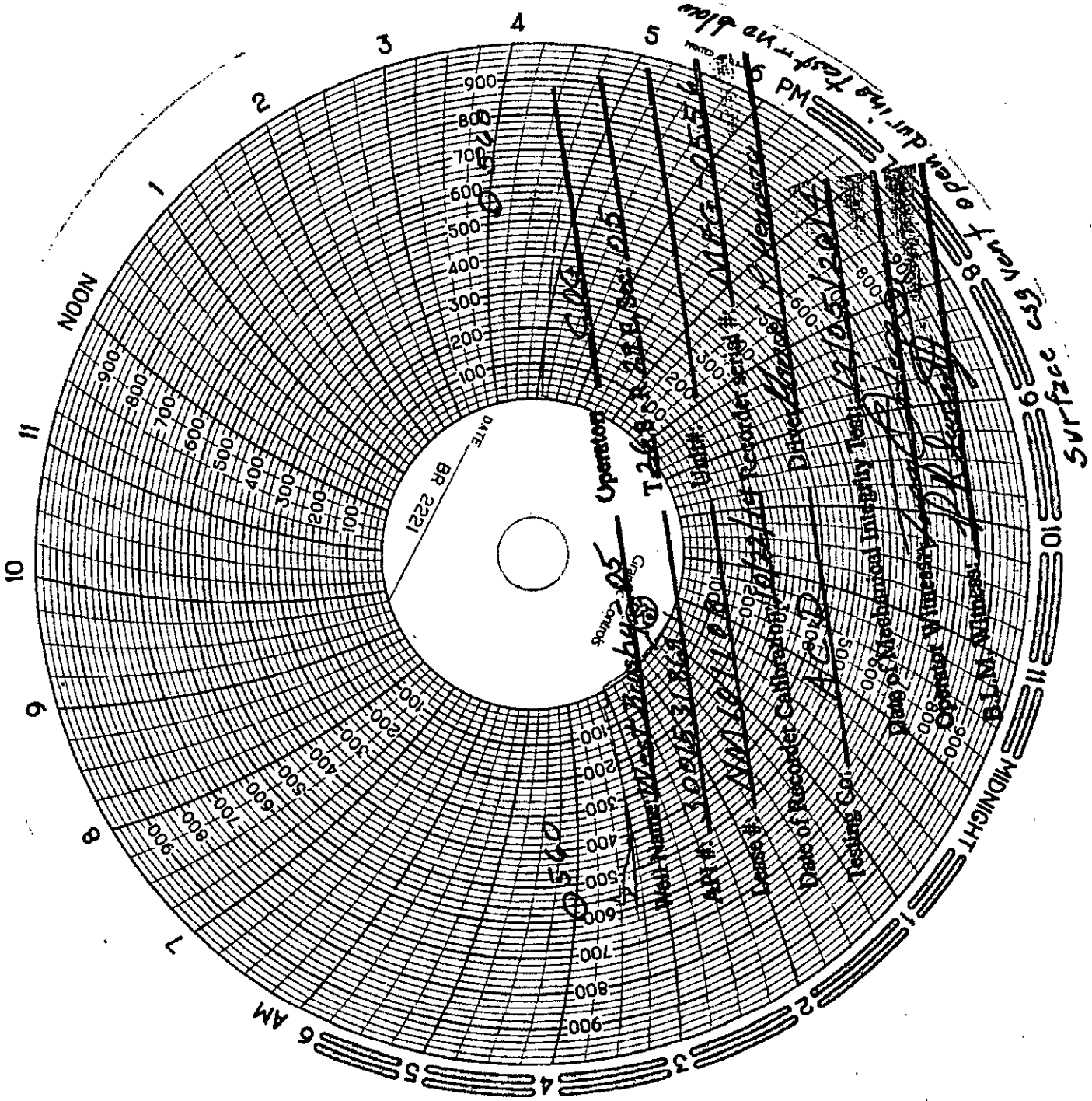
ACCEPTED FOR RECORD

NOV 13 2015

R. Swartz

BUREAU OF LAND MANAGEMENT
CARLSBAD FIELD OFFICE

** BLM REVISED ** BLM REVISED ** BLM REVISED ** BLM REVISED ** BLM REVISED **



Operator

Date

Time

Pressure

Temperature

BR 2221

T2633

Operator

Date

Time

Pressure

Temperature

BR 2221

T2633

Operator

Date

Time

Pressure

Temperature

BR 2221

T2633

Operator

Date

Time

Pressure

Temperature

BR 2221

T2633

Operator

Date

Time

Pressure

Temperature

BR 2221

T2633

Operator

Date

Time

Pressure

Temperature

BR 2221

T2633

Operator

Date

Time

Pressure

Temperature

BR 2221

T2633

Operator

Date

Time

Pressure

Temperature

BR 2221

T2633

Operator

Date

Time

Pressure

Temperature

BR 2221

T2633

Operator

Date

Time

Pressure

Temperature

BR 2221

T2633

Operator

Date

Time

Pressure

Temperature

BR 2221

T2633

Operator

Date

Time

Pressure

Temperature

BR 2221

T2633

Operator

Date

Time

Pressure

Temperature

BR 2221

T2633

Operator

Date

Time

Pressure

Temperature

BR 2221

T2633

Operator

Date

Time

Pressure

Temperature

BR 2221

T2633

Operator

Date

Time

Pressure

Temperature

BR 2221

T2633

Operator

Date

Time

Pressure

Temperature

BR 2221

T2633

Operator

Date

Time

Pressure

Temperature

BR 2221

T2633

Operator

Date

Time

Pressure

Temperature

BR 2221

T2633

Operator

Date

Time

Pressure

Temperature

BR 2221

T2633

Operator

Date

Time

Pressure

Temperature

BR 2221

T2633

Operator

Date

Time

Pressure

Temperature

BR 2221

T2633

Operator

Date

Time

Pressure

Temperature

BR 2221

T2633

Operator

Date

Time

Pressure

Temperature

BR 2221

T2633

Operator

Date

Time

Pressure

Temperature

BR 2221

T2633

Operator

Date

Time

Pressure

Temperature

BR 2221

T2633

Operator

Date

Time

Pressure

Temperature

BR 2221

T2633

Operator

Date

Time

Pressure

Temperature

BR 2221

T2633

Operator

Date

Time

Pressure

Temperature

BR 2221

T2633

Operator

Date

Time

Pressure

Temperature

BR 2221

T2633

Operator

Date

Time

Pressure

Temperature

BR 2221

T2633

Operator

Date

Time

Pressure

Temperature

BR 2221

T2633

Operator

Date

Time

Pressure

Temperature

BR 2221

T2633

Operator

Date

Time

Pressure

Temperature

BR 2221

T2633

Operator

Date

Time

Pressure

Temperature

BR 2221

T2633

Operator

Date

Time

Pressure

Temperature

BR 2221

T2633

Operator

Date

Time

Pressure

Temperature

BR 2221

T2633

Operator

Date

Time

Pressure

Temperature

BR 2221

T2633

Operator

Date

Time

Pressure

Temperature

BR 2221

T2633

Operator

Date

Time

Pressure

Temperature

BR 2221

T2633

Operator

Date

Time

Pressure

Temperature

BR 2221

T2633

Operator

Date

Time

Pressure

Temperature

BR 2221

T2633

Operator

Date

Time

Pressure

Temperature

BR 2221

T2633

Operator

Date

Time

Pressure

Temperature

BR 2221

T2633

Operator

Date

Time

Pressure

Temperature

BR 2221

T2633

Operator

Date

Time

Pressure

Temperature

BR 2221

T2633

Operator

Date

Time

Pressure

Temperature

BR 2221

T2633

Operator