

DISTRICT I
1625 N. French Dr., Hobbs, NM 88240
Phone: (575) 393-6161 Fax: (575) 393-0720

DISTRICT II
811 S. First St., Artesia, NM 88210
Phone: (575) 748-1283 Fax: (575) 748-9720

DISTRICT III
1000 Rio Brazos Road, Aztec, NM 87410
Phone: (505) 334-6178 Fax: (505) 334-6170

DISTRICT IV
1220 S. St. Francis Dr., Santa Fe, NM 87505
Phone: (505) 476-3460 Fax: (505) 476-3462

State of New Mexico
Energy, Minerals & Natural Resources Department
OIL CONSERVATION DIVISION
1220 South St. Francis Dr.
Santa Fe, New Mexico 87505

NM OIL CONSERVATION

ARTESIA DISTRICT

Form C-102

Revised August 1, 2011

Submit one copy to appropriate District Office

DEC 04 2015

RECEIVED

□ AMENDED REPORT

WELL LOCATION AND ACREAGE DEDICATION PLAT

API Number 30-015-42654	Pool Code 96831	Pool Name Cedar Lake, Glorietta - Yeso
Property Code 308724	Property Name NFE FEDERAL	
OGRID No. 873	Operator Name APACHE CORPORATION	
	Well Number 34H	Elevation 3754'

Surface Location

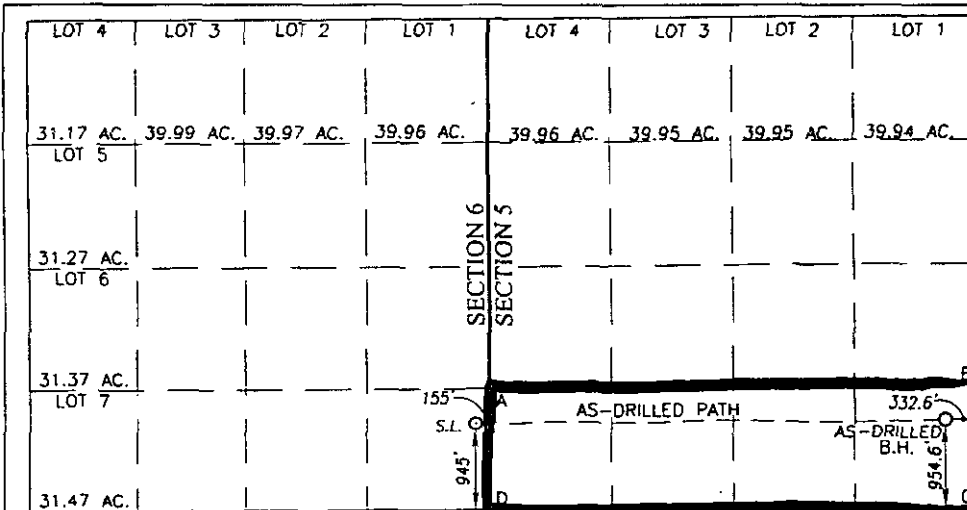
UL or lot No.	Section	Township	Range	Lot Idn	Feet from the	North/South line	Feet from the	East/West line	County
P	6	17-S	31-E		945	SOUTH	155	EAST	EDDY

AS-Drilled Bottom Hole Location If Different From Surface

UL or lot No.	Section	Township	Range	Lot Idn	Feet from the	North/South line	Feet from the	East/West line	County
P	5	17-S	31-E		954.6	SOUTH	332.6	EAST	EDDY

Dedicated Acres 160	Joint or Infill	Consolidation Code	Order No.
-------------------------------	-----------------	--------------------	-----------

NO ALLOWABLE WILL BE ASSIGNED TO THIS COMPLETION UNTIL ALL INTERESTS HAVE BEEN CONSOLIDATED OR A NON-STANDARD UNIT HAS BEEN APPROVED BY THE DIVISION



OPERATOR CERTIFICATION

I hereby certify that the information herein is true and complete to the best of my knowledge and belief, and that this organization either owns a working interest or unleased mineral interest in the land including the proposed bottom hole location or has a right to drill this well at this location pursuant to a contract with an owner of such mineral or working interest, or to a voluntary pooling agreement or a compulsory pooling order heretofore entered by the division.

Emily Follis 12/1/15
Signature Date

Emily Follis
Printed Name

emily.follis@apachecorp.com
E-mail Address

SURVEYOR CERTIFICATION

I hereby certify that the well location shown on this plat was plotted from field notes of actual surveys made by me or under my supervision, and that the same is true and correct to the best of my belief.

APR 5 2012
Date of Survey

Signature & Seal of Professional Surveyor:
Ronald J. Eidson

REGISTERED PROFESSIONAL SURVEYOR
NEW MEXICO
3239

04/20/2015

Certificate Number: *Ronald J. Eidson* 12641
Ronald J. Eidson 3239

LSL REL W.O.: 14.13.0074 JWSC W.O.: 15.13.0483

GEODETIC COORDINATES
NAD 27 NME
SURFACE LOCATION
Y=676398.9 N
X=632910.6 E
LAT.=32.858755° N
LONG.=103.900501° W
LAT.=32° 51' 32" N
LONG.=103° 54' 02" W

GEODETIC COORDINATES
NAD 83 NME
SURFACE LOCATION
Y=676462.9 N
X=674089.3 E
LAT.=32.858872° N
LONG.=103.901008° W
LAT.=32° 51' 32" N
LONG.=103° 54' 04" W

CORNER COORDINATES TABLE
NAD 27 NME

A - Y=676775.0 N, X=633063.5 E
B - Y=676812.0 N, X=638343.2 E
C - Y=675492.7 N, X=638350.7 E
D - Y=675455.2 N, X=633070.9 E

CORNER COORDINATES TABLE
NAD 83 NME

A - Y=676839.0 N, X=674242.1 E
B - Y=676876.1 N, X=679521.8 E
C - Y=675556.7 N, X=679529.3 E
D - Y=675519.2 N, X=674249.5 E

NOTE: AS-DRILLED BOTTOM HOLE AND WELL PATH PLOTTED FROM PHOENIX TECHNOLOGY SERVICE STANDARD SURVEY REPORT 4/8/15

GEODETIC COORDINATES
NAD 27 NME
AS-DRILLED B.H. LOCATION
Y=676444.6 N
X=638012.8 E
LAT.=32.858822° N
LONG.=103.883885° W
LAT.=32° 51' 32" N
LONG.=103° 53' 02" W

GEODETIC COORDINATES
NAD 83 NME
AS-DRILLED B.H. LOCATION
Y=676508.7 N
X=679191.4 E
LAT.=32.858940° N
LONG.=103.884393° W
LAT.=32° 51' 32" N
LONG.=103° 53' 04" W