

DISTRICT I
1625 N. French Dr., Hobbs, NM 88240
Phone: (575) 393-6161 Fax: (575) 393-0720

DISTRICT II
811 S. First St., Artesia, NM 88210
Phone: (505) 748-1283 Fax: (505) 748-9720

DISTRICT III
1000 Rio Brazos Road, Aztec, NM 87410
Phone: (505) 334-6178 Fax: (505) 334-6170

DISTRICT IV
1220 S. St. Francis Dr., Santa Fe, NM 87505
Phone: (505) 476-3460 Fax: (505) 476-3462

State of New Mexico
Energy, Minerals & Natural Resources Department
OIL CONSERVATION DIVISION
1220 South St. Francis Dr.
Santa Fe, New Mexico 87505

NM OIL CONSERVATION
ARTESIA DISTRICT
JUN 27 2016
RECEIVED

Form C-102

Revised August 1, 2011

Submit one copy to appropriate District Office

AMENDED REPORT

WELL LOCATION AND ACREAGE DEDICATION PLAT

API Number 30-015-43720	Pool Code 76780	Pool Name FOREHAND RANCH-WOLFCAMP
Property Code 316111	Property Name FOREHAND RANCH 22 FEDERAL COM	Well Number 6H
OGRID No. 249099	Operator Name CAZA OPERATING, LLC	Elevation 3143'

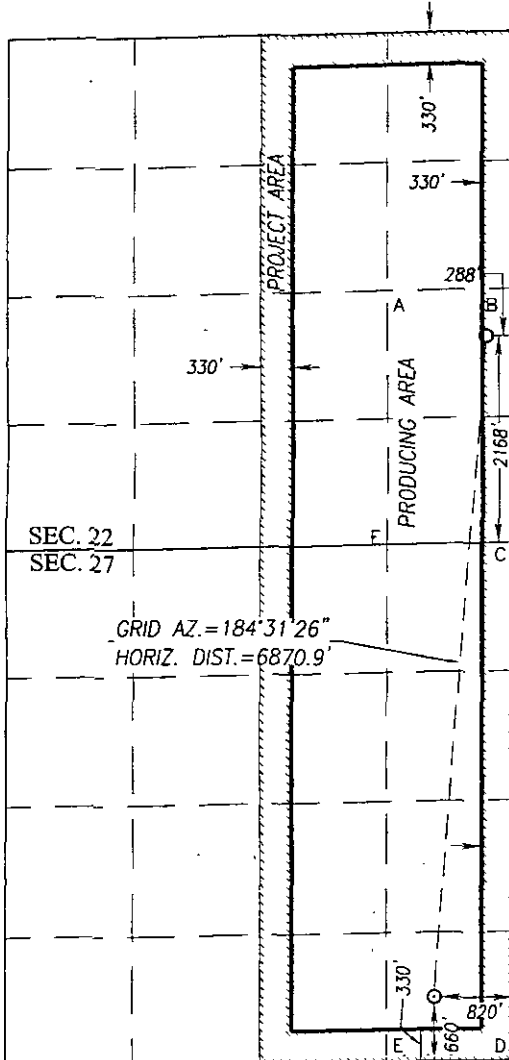
Surface Location

UL or lot No.	Section	Township	Range	Lot Idn	Feet from the	North/South line	Feet from the	East/West line	County
I	22	23-S	27-E		2168	SOUTH	288	EAST	EDDY

Bottom Hole Location If Different From Surface

UL or lot No.	Section	Township	Range	Lot Idn	Feet from the	North/South line	Feet from the	East/West line	County
P	27	23-S	27-E		660	SOUTH	820	EAST	EDDY
Dedicated Acres 640	Joint or Infill	Consolidation Code	Order No.						

NO ALLOWABLE WILL BE ASSIGNED TO THIS COMPLETION UNTIL ALL INTERESTS HAVE BEEN CONSOLIDATED OR A NON-STANDARD UNIT HAS BEEN APPROVED BY THE DIVISION



GEODETIC COORDINATES
SURFACE LOCATION
NAD 83 NME
Y= 469034.6 N
X= 591678.2 E
LAT.=32.289345° N
LONG.=104.170424° W

GEODETIC COORDINATES
SURFACE LOCATION
NAD 27 NME
Y= 468975.8 N
X= 550495.8 E
LAT.=32.289225° N
LONG.=104.169926° W

CORNER COORDINATES TABLE

NAD 27 NME
A - Y= 469440.1 N, X= 549470.5 E
B - Y= 469470.1 N, X= 550784.5 E
C - Y= 466813.9 N, X= 550780.2 E
D - Y= 461480.4 N, X= 550772.7 E
E - Y= 461460.8 N, X= 549453.0 E
F - Y= 466785.2 N, X= 549466.6 E

CORNER COORDINATES TABLE

NAD 83 NME
A - Y= 469498.9 N, X= 590652.9 E
B - Y= 469528.9 N, X= 591966.9 E
C - Y= 466872.8 N, X= 591962.6 E
D - Y= 461539.0 N, X= 591955.3 E
E - Y= 461519.4 N, X= 590635.5 E
F - Y= 466844.0 N, X= 590649.1 E

BOTTOM HOLE LOCATION
NAD 83 NME
Y= 462186.7 N
X= 591136.4 E
LAT.=32.270523° N
LONG.=104.172211° W

BOTTOM HOLE LOCATION
NAD 27 NME
Y= 462128.1 N
X= 549953.8 E
LAT.=32.270404° N
LONG.=104.171713° W

OPERATOR CERTIFICATION

I hereby certify that the information herein is true and complete to the best of my knowledge and belief, and that this organization either owns a working interest or unleased mineral interest in the land including the proposed bottom hole location or has a right to drill this well at this location pursuant to a contract with an owner of such mineral or working interest, or to a voluntary pooling agreement or a compulsory pooling order heretofore entered by the division.

Joe T. Janica
Signature Date
Joe T. Janica 06/23/16

Printed Name
E-mail Address
joejanica@valornet.com

SURVEYOR CERTIFICATION

I hereby certify that the well location shown on this plat was plotted from field notes of actual surveys made by me or under my supervision, and that the same is true and correct to the best of my belief.

JANUARY 28, 2015

Date of Survey
Signature & Seal of Professional Surveyor:

NEW MEXICO
REGISTERED SURVEYOR
3239
Ronald J. Eidson
Certificate Number
Gary G. Eidson 12641
Ronald J. Eidson 3239
LSL REL W.O.: 15.13.0309 JWSC W.O.: 15.13.0357