

DISTRICT I  
1625 N. French Dr., Hobbs, NM 88240  
Phone: (575) 393-6161 Fax: (575) 393-0720

DISTRICT II  
811 S. First St., Artesia, NM 88210  
Phone: (575) 748-1283 Fax: (575) 748-9720

DISTRICT III  
1000 Rio Hrazos Road, Aztec, NM 87410  
Phone: (505) 334-6178 Fax: (505) 334-6170

DISTRICT IV  
1220 S. St. Francis Dr., Santa Fe, NM 87505  
Phone: (505) 476-3460 Fax: (505) 476-3462

**NEW MEXICO OIL CONSERVATION**  
State of New Mexico  
Minerals & Natural Resources Department  
OIL CONSERVATION DIVISION  
1220 South St. Francis Dr.  
Santa Fe, New Mexico 87505

Form C-102  
Revised August 1, 2011  
Submit one copy to appropriate  
District Office

**RECEIVED**

DAMENDED REPORT

**WELL LOCATION AND ACREAGE DEDICATION PLAT**

API Number <b>30-015-43366</b>	Pool Code <b>96831</b>	Pool Name <b>Cedar Lake, Glorieta - Yeso</b>
Property Code	Property Name <b>COFFEE FEDERAL</b>	Well Number <b>22D</b>
OGRID No. <b>873</b>	Operator Name <b>APACHE CORPORATION</b>	Elevation <b>3732'</b>

**Surface Location**

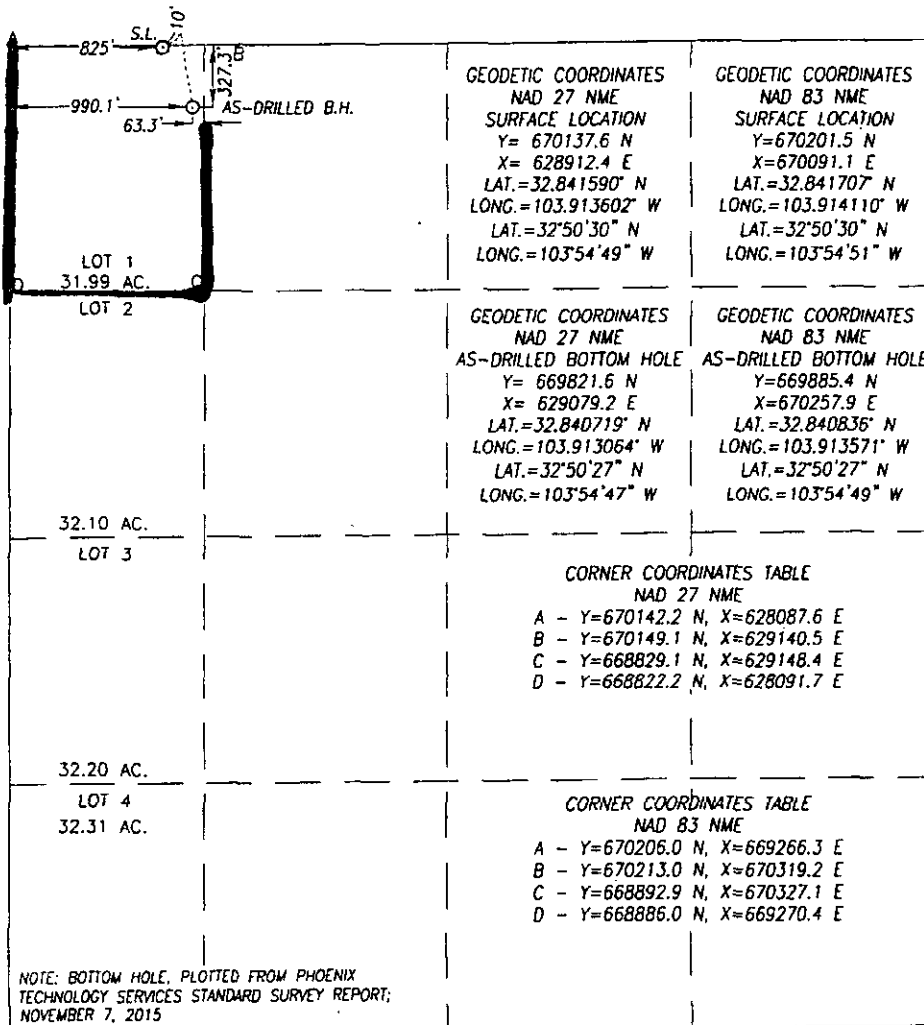
UL or lot No.	Section	Township	Range	Lot Idn	Feet from the	North/South line	Feet from the	East/West line	County
1	18	17-S	31-E		10	NORTH	825	WEST	EDDY

**As-Drilled Bottom Hole Location If Different From Surface**

UL or lot No.	Section	Township	Range	Lot Idn	Feet from the	North/South line	Feet from the	East/West line	County
1	18	17-S	31-E		327.3	NORTH	990.9	WEST	EDDY

Dedicated Acres <b>31.99</b>	Joint or Infill	Consolidation Code	Order No. <b>NSL-7350</b>
---------------------------------	-----------------	--------------------	------------------------------

NO ALLOWABLE WILL BE ASSIGNED TO THIS COMPLETION UNTIL ALL INTERESTS HAVE BEEN CONSOLIDATED OR A NON-STANDARD UNIT HAS BEEN APPROVED BY THE DIVISION



**OPERATOR CERTIFICATION**

I hereby certify that the information herein is true and complete to the best of my knowledge and belief, and that this organization either owns a working interest or unleased mineral interest in the land including the proposed bottom hole location or has a right to drill this well at this location pursuant to a contract with an owner of such mineral or working interest, or to a voluntary pooling agreement or a compulsory pooling order heretofore entered by the division.

Signature: *Emily Follis* Date: \_\_\_\_\_  
Printed Name: *Emily Follis*  
E-mail Address: *emily.follis@apachecorp.com*

**SURVEYOR CERTIFICATION**

I hereby certify that the well location shown on this plat was plotted from field notes of actual surveys made by me or under my supervision, and that the same is true and correct to the best of my belief.

DATE: JULY 21, 2014  
Date of Survey: \_\_\_\_\_  
Signature of Professional Surveyor: *Ronald J. Eidson*  
NEW MEXICO  
REGISTERED SURVEYOR  
3239  
Certificate Number: Gary G. Eidson 12641  
Ronald J. Eidson 3239  
LSL REL. W.O.: 15130912 JWSC W.O.: 15.13.1059