

DISTRICT I
1624 N. FRENCH DR., HOBBS, NM 88240
Phone: (575) 393-6161 Fax: (575) 393-0720

DISTRICT II
611 S. FIRST ST., ARTESIA, NM 88210
Phone: (575) 748-1283 Fax: (575) 748-8720

DISTRICT III
1000 RIO BRAZOS RD., AZTEC, NM 87410
Phone: (505) 334-6178 Fax: (505) 334-6170

DISTRICT IV
1220 S. ST. FRANCIS DR., SANTA FE, NM 87505
Phone: (505) 476-3460 Fax: (505) 476-3462

State of New Mexico
Energy, Minerals & Natural Resources Department
OIL CONSERVATION DIVISION
1220 SOUTH ST. FRANCIS DR.
Santa Fe, New Mexico 87505

NM OIL CONSERVATION

ARTESIA DISTRICT

Form C-102

Revised August 1, 2011

Submit one copy to appropriate
District Office

RECEIVED

☒ AMENDED REPORT

WELL LOCATION AND ACREAGE DEDICATION PLAT

As Drilled

API Number 30-015-42827	Pool Code 64010	Pool Name Welch; Bone Spring
Property Code 313961	Property Name SCREECH OWL FEDERAL	Well Number 3H
OGRID No. 229137	Operator Name COG OPERATING, LLC	Elevation 3297.3'

Surface Location

UL or lot No.	Section	Township	Range	Lot Idn	Feet from the	North/South line	Feet from the	East/West line	County
0	18	26-S	27-E		250	SOUTH	2450	EAST	EDDY

Bottom Hole Location If Different From Surface

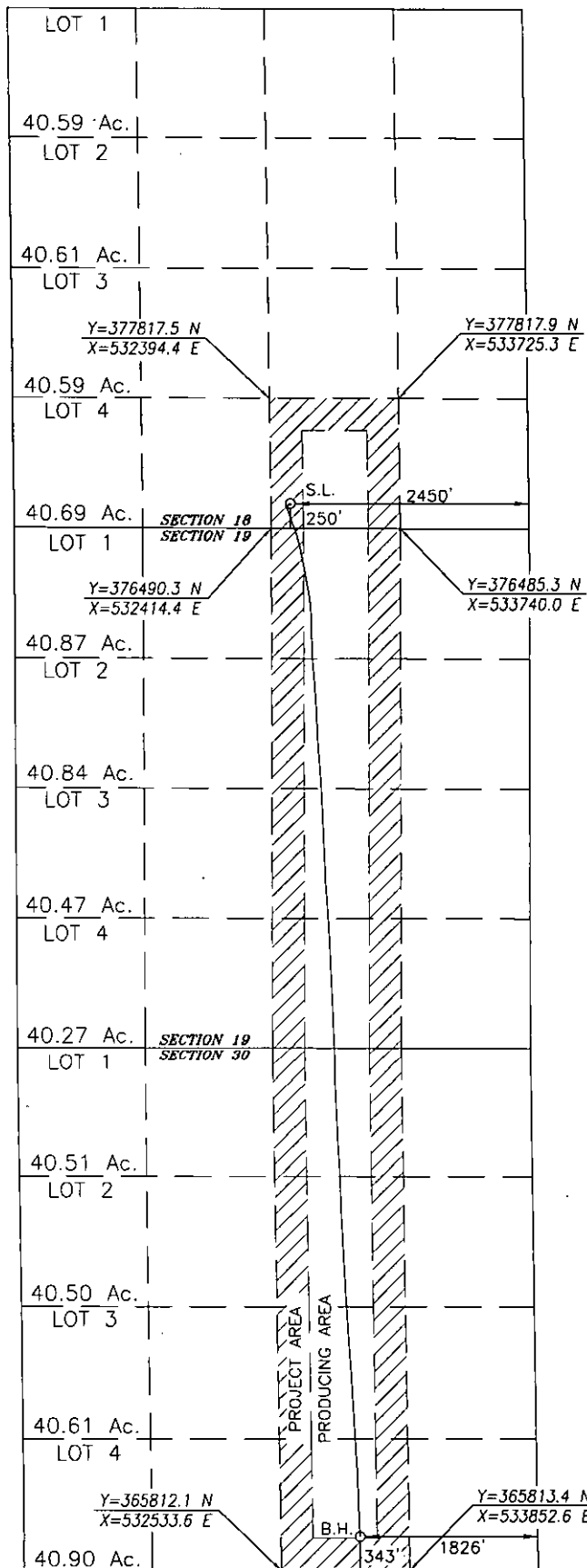
UL or lot No.	Section	Township	Range	Lot Idn	Feet from the	North/South line	Feet from the	East/West line	County
0	30	26-S	27-E		343	SOUTH	1826	EAST	EDDY

Dedicated Acres 320	Joint or Infill	Consolidation Code	Order No.
------------------------	-----------------	--------------------	-----------

NO ALLOWABLE WILL BE ASSIGNED TO THIS COMPLETION UNTIL ALL INTERESTS HAVE BEEN CONSOLIDATED
OR A NON-STANDARD UNIT HAS BEEN APPROVED BY THE DIVISION

SEE PAGE 2

Property Code 313961	Property Name SCREECH OWL FEDERAL	Well Number 3H
OGRID No. 229137	Operator Name COG OPERATING, LLC	Elevation 3297.3'



NAD 27
SURFACE LOCATION
Y=376739.5 N
X=532611.6 E
LAT.=32.035728° N
LONG.=104.228092° W

BOREPATH SHOWN HEREON IS BASED ON
DIRECTIONAL SURVEY REPORT PROVIDED BY
COG OPERATING, LLC FOR THE SCREECH OWL
FEDERAL COM #3H SUPPLIED TO HARCROW
SURVEYING, LLC ON JULY 25, 2016

1800 0 1800
SCALE: 1"=1800'

OPERATOR CERTIFICATION

I hereby certify that the information herein is true and complete to the best of my knowledge and belief, and that this organization either owns a working interest or unleased mineral interest in the land including the proposed bottom hole location or has a right to drill this well at this location pursuant to a contract with an owner of such mineral or working interest, or to a voluntary pooling agreement or a compulsory pooling order heretofore entered by the division.

Signature Stormi Davis 8/9/16
Date

Printed Name

sdavis@concho.com

E-mail Address

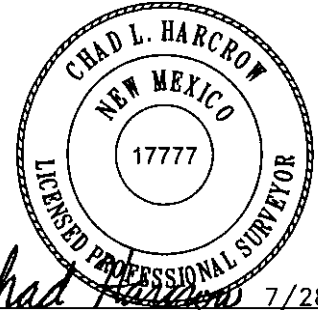
SURVEYOR CERTIFICATION

I hereby certify that the well location shown on this plat was plotted from field notes of actual surveys made by me or under my supervision, and that the same is true and correct to the best of my belief.

FEB 7, 2014/JULY 25, 2016

Date of Survey/Date of Geographic Survey

Signature & Seal of Professional Surveyor



Chad Harcrow 7/28/16
Certificate No. CHAD HARCROW 17777