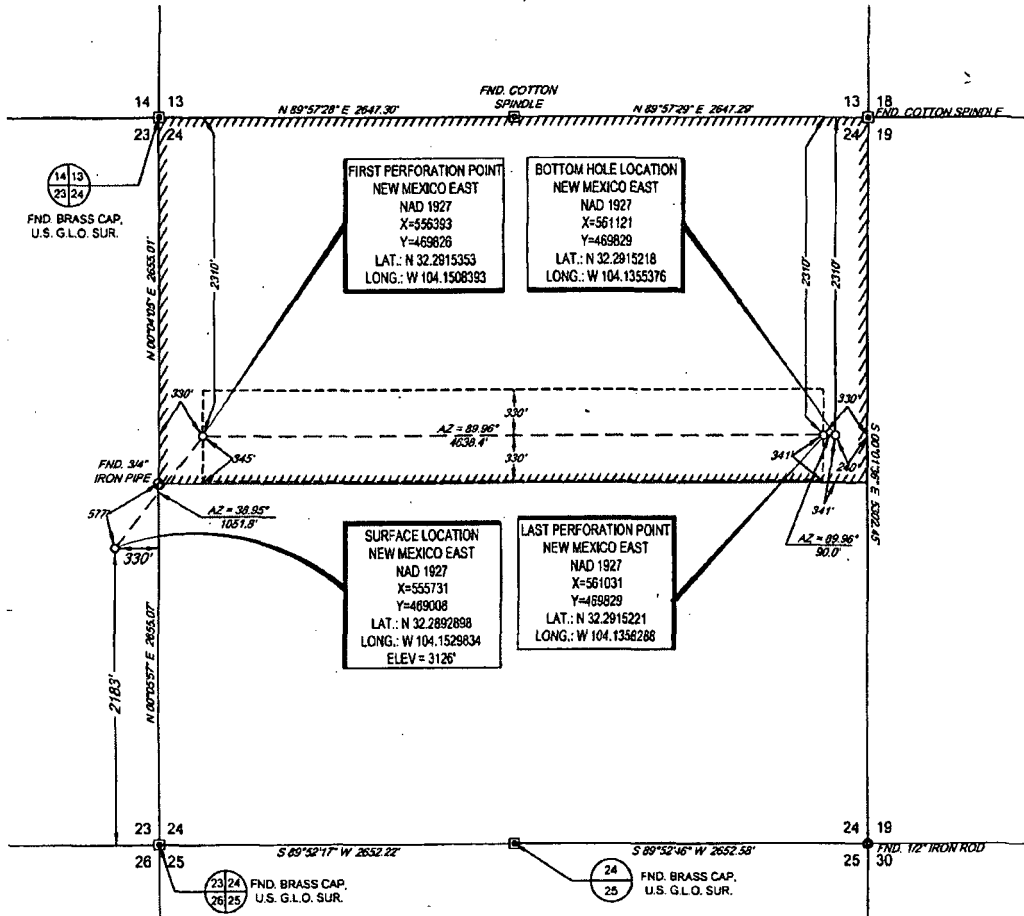


30-015-43379



SECTION 23, TOWNSHIP 23-S, RANGE 27-E, N.M.P.M.
EDDY COUNTY, NEW MEXICO



SCALE: 1" = 1000'
0 500' 1000'

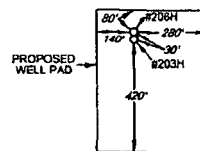
LEASE NAME & WELL NO.: DR. K 24-23S-27E RB #206H

SECTION 23 TWP 23-S RGE 27-E SURVEY N.M.P.M.
COUNTY EDDY STATE NM
DESCRIPTION 2183' FSL & 330' FEL

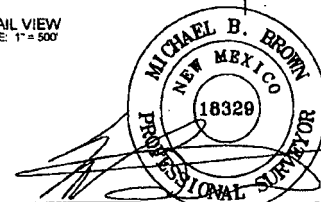
DISTANCE & DIRECTION
FROM INT. OF US-285 & W. CEDAR ST. GO NORTH ON US-285
±0.9 MILES, THENCE WEST ON W. LONDON RD ±3.1 MILES,
THENCE SOUTH ON S. COUNTRY RD. ±0.6 MILES, THENCE EAST
ON E. PROMISE LAND RD. ±0.4 MILES TO A POINT ±1150 FEET
NORTH OF LOCATION.

ALL BEARINGS, DISTANCES, AND COORDINATE VALUES CONTAINED HEREON ARE GRID
BASED UPON THE NEW MEXICO STATE PLANE COORDINATE SYSTEM, EAST ZONE OF THE
NORTH AMERICAN DATUM 1927, U.S. SURVEY FEET.

THIS EASEMENT/SERVITUDE LOCATION SHOWN HEREON HAS BEEN SURVEYED ON THE GROUND
UNDER MY SUPERVISION AND PREPARED ACCORDING TO THE EVIDENCE FOUND AT THE TIME OF
SURVEY, AND DATA PROVIDED BY MATADOR PRODUCTION COMPANY. THIS CERTIFICATION IS MADE
AND LIMITED TO THOSE PERSONS OR ENTITIES SHOWN ON THE FACE OF THIS PLAT AND IS
NON-TRANSFERABLE. THIS SURVEY IS CERTIFIED FOR THIS TRANSACTION ONLY.



DETAIL VIEW
SCALE: 1" = 500'



Michael Blake Brown, P.S. No. 18329
AUGUST 13, 2015

TOPOGRAPHIC
LOYALTY INNOVATION LEGACY
1400 EVERMAN PARKWAY, SUITE 107 - FT. WORTH, TEXAS 76140
TELEPHONE: (817) 244-7512 - FAX: (817) 244-7548
2803 NORTH BIG SPRING - MIDLAND, TEXAS 79705
TELEPHONE: (432) 802-1633 OR (800) 767-1833 - FAX: (432) 882-1743
WWW.TOPOGRAPHIC.COM