

**ARTESIA DISTRICT****FORM C-102**

Revised August-1, 2011

**Submit one copy to appropriate**

**District Office**

**District I**  
1625 N. French Dr., Hobbs, NM 88240  
Phone: (575) 393-6161 Fax: (575) 393-0720

**District II**  
811 S. First St., Artesia, NM 88210  
Phone: (575) 748-1283 Fax: (575) 748-9720

**District III**  
1000 Rio Brazos Road, Aztec, NM 87410  
Phone: (505) 334-6178 Fax: (505) 334-6170

**District IV**  
1220 S. St. Francis Dr., Santa Fe, NM 87505  
Phone: (505) 476-3460 Fax: (505) 476-3462

State of New Mexico  
Energy, Minerals & Natural Resources  
Department  
OIL CONSERVATION DIVISION  
1220 South St. Francis Dr.  
Sante Fe, NM 87505

RECEIVED

☒ **AMENDED REPORT**

## WELL LOCATION AND ACREAGE DEDICATION PLAT

<sup>1</sup> API Number 30-015-43379	<sup>2</sup> Pool Code 76780	<sup>3</sup> Pool Name FOREHAND RANCH;WOLFCAMP (GAS)
<sup>4</sup> Property Code 315274	<sup>5</sup> Property Name DR. K 24-23S-27E RB	<sup>6</sup> Well Number #206H
<sup>7</sup> OGRID No. 228937	<sup>8</sup> Operator Name MATADOR PRODUCTION COMPANY	<sup>9</sup> Elevation 3127'

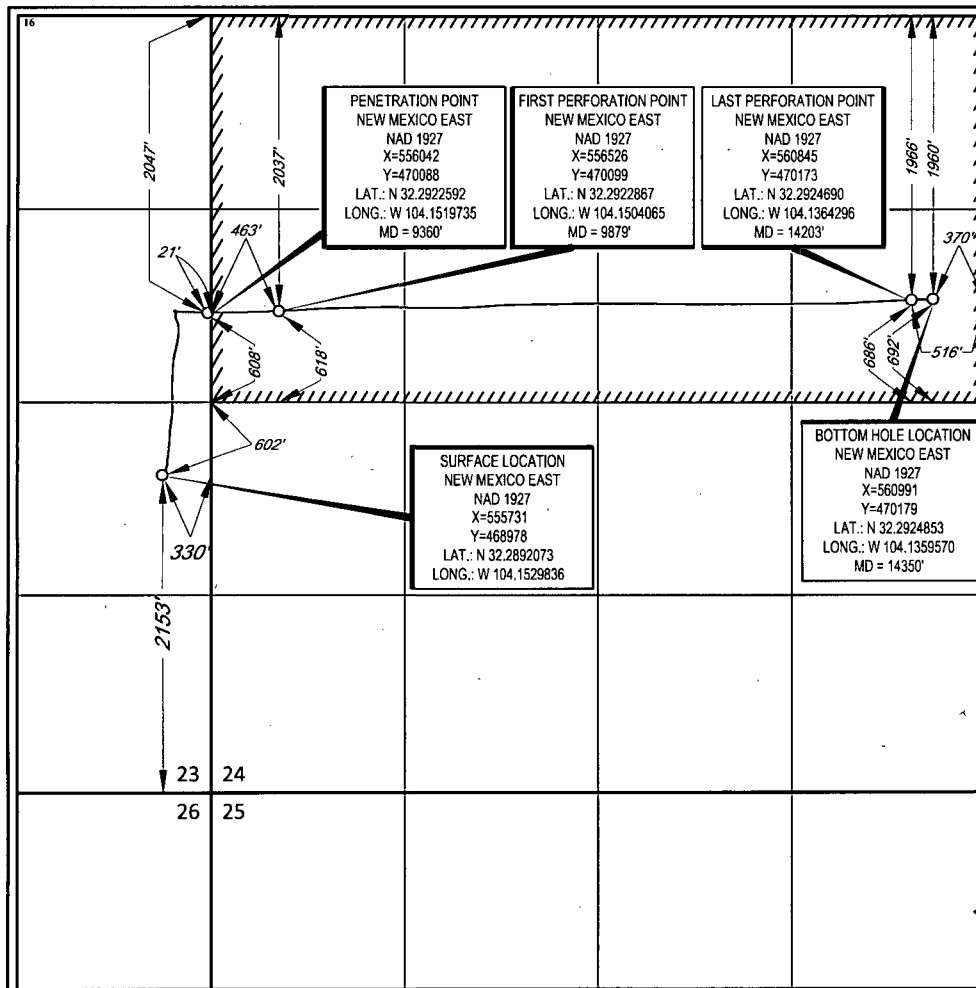
### **<sup>10</sup>Surface Location**

UL or lot no.	Section	Township	Range	Lot Idn	Feet from the	North/South line	Feet from the	East/West line	County
I	23	23-S	27-E	-	2153'	SOUTH	330'	EAST	EDDY

UL or lot no.	Section	Township	Range	Lot Idn	Feet from the	North/South line	Feet from the	East/West line	County
H	24	23-S	27-E	-	1960'	NORTH	370'	EAST	EDDY

<sup>12</sup> Dedicated Acres <b>320</b>	<sup>13</sup> Joint or Infill	<sup>14</sup> Consolidation Code	<sup>15</sup> Order No.
---	-------------------------------	----------------------------------	-------------------------

No allowable will be assigned to this completion until all interests have been consolidated or a non-standard unit has been approved by the division.



## <sup>17</sup>OPERATOR CERTIFICATION

I hereby certify that the information contained herein is true and complete to the best of my knowledge and belief, and that this organization either owns a working interest or unleased mineral interest in the land including the proposed bottom hole location or has a right to drill this well at this location pursuant to a contract with an owner of such a mineral or working interest, or to a voluntary pooling agreement or a compulsory pooling order heretofore entered by the Division.

Signature Ch. A. L. Date 9/8/16

Chris Carleton  
Printed Name

ccarleton@matadorresources.com  
E-mail Address

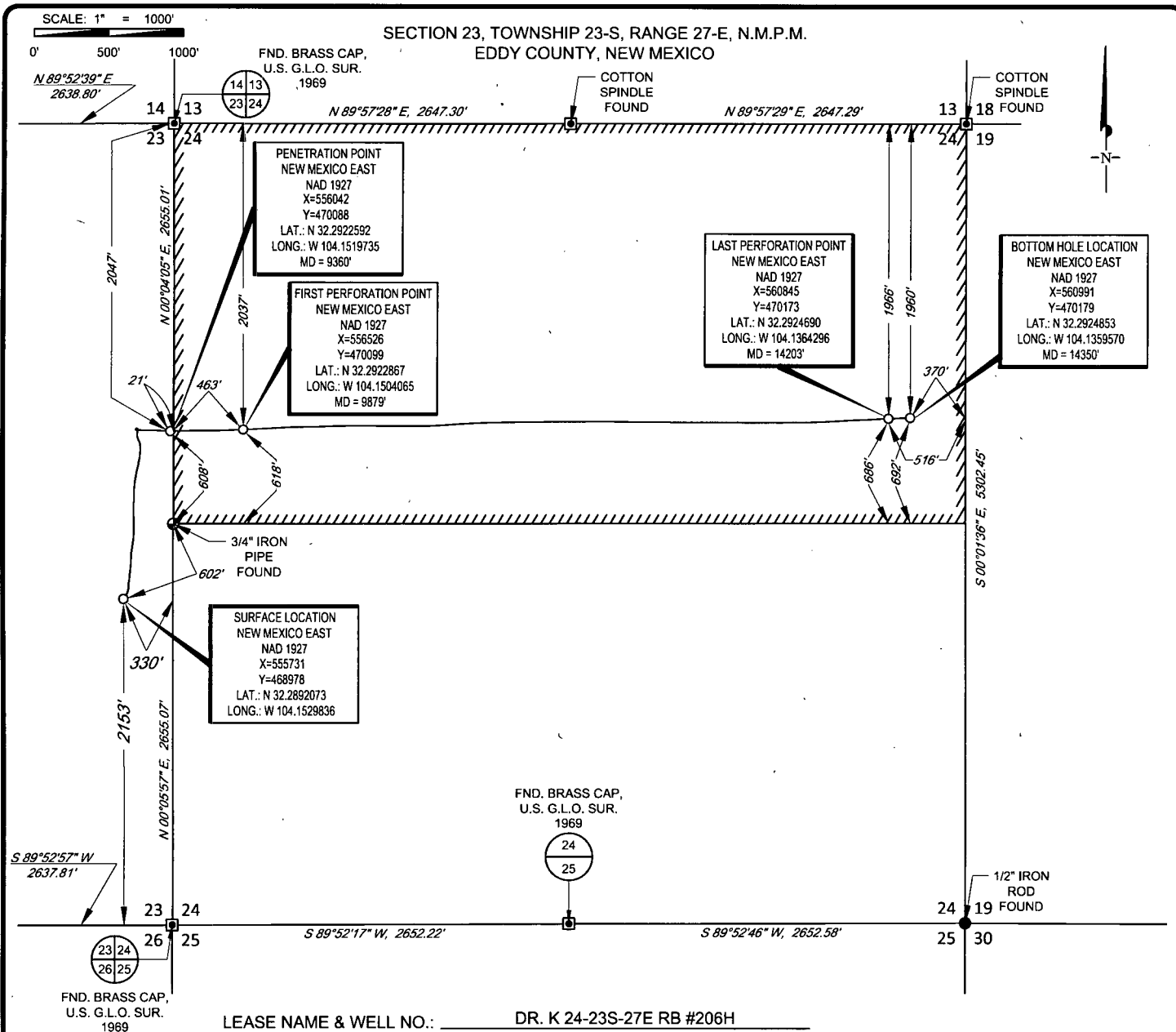
## 18 SURVEYOR CERTIFICATION

I hereby certify that the well location shown on this plat was plotted from field notes of actual surveys made by me or under my supervision, and that the same is true to the best of my belief.

09/16/2015

Date of Survey \_\_\_\_\_  
Signature and Seal of Professional Surveyor \_\_\_\_\_

A circular professional seal for Michael J. Brown, a Professional Surveyor in New Mexico. The seal features the text "MICHAEL J. BROWN" at the top, "NEW MEXICO" in the middle, and "PROFESSIONAL SURVEYOR" at the bottom. The number "18329" is prominently displayed in the center. The seal is crossed out with several diagonal lines.



LEASE NAME & WELL NO.: DR. K 24-23S-27E RB #206H

SECTION 23 TWP. 23-S RGE. 27-E SURVEY N.M.P.M.

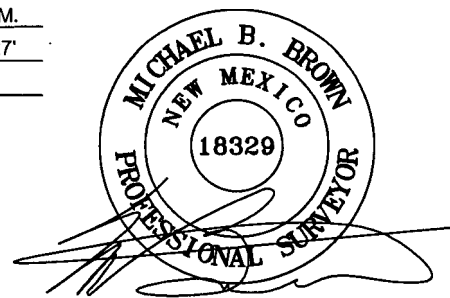
COUNTY EDDY STATE NM ELEVATION 3127'

DESCRIPTION 2153' FSL & 330' FEL



**TOPOGRAPHIC**  
LOYALTY | INNOVATION | LEGACY

1400 EVERMAN PARKWAY, Ste. 197 • FT. WORTH, TEXAS 76140  
TELEPHONE: (817) 744-7512 • FAX (817) 744-7548  
2903 NORTH BIG SPRING • MIDLAND, TEXAS 79705  
TELEPHONE: (432) 682-1653 OR (800) 767-1653 • FAX (432) 682-1743  
WWW.TOPOGRAPHIC.COM



Michael Blake Brown, P.S. No. 18329  
SEPTEMBER 07, 2016

DR. K 24-23S-27E RB #206H AS-DRILLED	REVISION:	
DATE: 09/07/16		
FILE: AD_DR_K_24-23S-27E_RB_206H		
DRAWN BY: MML		
SHEET: 1 OF 1		

NOTES:

1. ORIGINAL DOCUMENT SIZE: 8.5" X 11"
2. ALL BEARINGS, DISTANCES, AND COORDINATE VALUES CONTAINED HEREIN ARE GRID BASED UPON THE NEW MEXICO STATE PLANE COORDINATE SYSTEM, EAST ZONE, U.S. SURVEY FEET, NORTH AMERICAN DATUM 1927.
3. CERTIFICATION IS MADE ONLY TO THE LOCATION OF THIS EASEMENT, IN RELATION TO THE EVIDENCE FOUND DURING A FIELD SURVEY, MADE ON THE GROUND, UNDER MY SUPERVISION, AND USING DOCUMENTATION PROVIDED BY MATADOR PRODUCTION COMPANY. ONLY UTILITIES/EASEMENTS THAT WERE VISIBLE ON THE DATE OF THIS SURVEY, WITHIN/ADJOINING THIS EASEMENT, HAVE BEEN LOCATED AS SHOWN HEREON OF WHICH I HAVE KNOWLEDGE. THIS CERTIFICATION IS LIMITED TO THOSE PERSONS OR ENTITIES SHOWN ON THE FACE OF THIS PLAT AND IS NON-TRANSFERABLE, AND MADE FOR THIS TRANSACTION ONLY.