

UNITED STATES
DEPARTMENT OF THE INTERIOR
BUREAU OF LAND MANAGEMENTNM OIL CONSERVATION
ARTESIA DISTRICT
NMOCD 31 2016
RECEIVEDFORM APPROVED
OMB No. 1004-0137
Expires: July 31, 2010

WELL COMPLETION OR RECOMPLETION REPORT AND LOG

5. Lease Serial No.
NMNM54290

6. If Indian, Allottee or Tribe Name

7. Unit or CA Agreement Name and No.

8. Lease Name and Well No.
NORTH BRUSHY DRAW FEDERAL 35 12H

9. API Well No.
30-015-43603-00-X1

10. Field and Pool, or Exploratory
UNDESIGNATED Wolfcamp

11. Sec., T., R., M., or Block and Survey
or Area Sec 35 T25S R29E Mer NMP

12. County or Parish
EDDY

13. State
NM

17. Elevations (DF, KB, RT, GL)*
3014 GL

16. Date Completed
☐ D & A ☒ Ready to Prod.
06/24/2016

18. Total Depth: MD 15302
TVD 10505

19. Plug Back T.D.: MD 15210
TVD 10503

20. Depth Bridge Plug Set: MD
TVD

21. Type Electric & Other Mechanical Logs Run (Submit copy of each)
GAMMARAY CCL

22. Was well cored? ☒ No ☐ Yes (Submit analysis)
Was DST run? ☒ No ☐ Yes (Submit analysis)
Directional Survey? ☐ No ☒ Yes (Submit analysis)

23. Casing and Liner Record (Report all strings set in well)

Hole Size	Size/Grade	Wt. (#/ft.)	Top (MD)	Bottom (MD)	Stage Cementer Depth	No. of Sk. & Type of Cement	Slurry Vol. (BBL)	Cement Top*	Amount Pulled
17.500	13.375 J-55	54.5	0	696		590		0	
12.250	9.625 J-55	40.0	0	3108		750		0	
8.750	7.000 P110-HC	29.0	1200	11001		880		1200	
6.000	4.500 P110-HC	13.5	9685	15297				9685	

24. Tubing Record

Size	Depth Set (MD)	Packer Depth (MD)	Size	Depth Set (MD)	Packer Depth (MD)	Size	Depth Set (MD)	Packer Depth (MD)

25. Producing Intervals

26. Perforation Record

Formation	Top	Bottom	Perforated Interval	Size	No. Holes	Perf. Status
A) WOLFCAMP	10553	10574	10818 TO 15190			
B)						
C)						
D)						

27. Acid, Fracture, Treatment, Cement Squeeze, Etc.

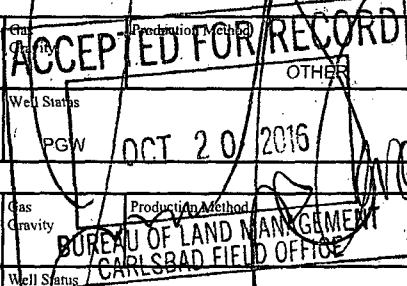
Depth Interval	Amount and Type of Material
10818 TO 15190	15% HCL, SLICKWATER/LINEAR GEL, 40/70 WHITE/100 MESH PROP 8,616,435# FLUID 6,361,568 GALS

28. Production - Interval A

Date First Produced	Test Date	Hours Tested	Test Production	Oil BBL	Gas MCF	Water BBL	Oil Gravity Corr. API	Gas Gravity	Production Method
9/17/2016	09/16/2016	312	→	757.0	222.0	2159.0			OTHER
Choke Size	Tbg. Press. Flwg. SI	Csg. Press.	24 Hr. Rate	Oil BBL	Gas MCF	Water BBL	Gas:Oil Ratio	Well Status	
64	SI	1875.0	→	58	17	166	293	PGW	OCT 20 2016

28a. Production - Interval B

Date First Produced	Test Date	Hours Tested	Test Production	Oil BBL	Gas MCF	Water BBL	Oil Gravity Corr. API	Gas Gravity	Production Method
			→						
Choke Size	Tbg. Press. Flwg. SI	Csg. Press.	24 Hr. Rate	Oil BBL	Gas MCF	Water BBL	Gas:Oil Ratio	Well Status	
	SI		→						



(See Instructions and spaces for additional data on reverse side)

ELECTRONIC SUBMISSION #347698 VERIFIED BY THE BLM WELL INFORMATION SYSTEM

** BLM REVISED ** BLM REVISED ** BLM REVISED ** BLM REVISED ** BLM REVISED **

Reclamation due: 03/07/2017

28b. Production - Interval C

Date First Produced	Test Date	Hours Tested	Test Production	Oil BBL	Gas MCF	Water BBL	Oil Gravity Corr. API	Gas Gravity	Production Method
			→						
Choke Size	Thg. Press. Flwg. SI	Csg. Press.	24 Hr. Rate	Oil BBL	Gas MCF	Water BBL	Gas:Oil Ratio	Well Status	
			→						

28c. Production - Interval D

Date First Produced	Test Date	Hours Tested	Test Production	Oil BBL	Gas MCF	Water BBL	Oil Gravity Corr. API	Gas Gravity	Production Method
			→						
Choke Size	Thg. Press. Flwg. SI	Csg. Press.	24 Hr. Rate	Oil BBL	Gas MCF	Water BBL	Gas:Oil Ratio	Well Status	
			→						

29. Disposition of Gas (Sold, used for fuel, vented, etc.)

UNKNOWN-- sold

30. Summary of Porous Zones (Include Aquifers):

Show all important zones of porosity and contents thereof: Cored intervals and all drill-stem tests, including depth interval tested, cushion used, time tool open, flowing and shut-in pressures and recoveries.

31. Formation (Log) Markers

Formation	Top	Bottom	Descriptions, Contents, etc.	Name	Top Meas. Depth
				BELL CANYON CHERRY CANYON BRUSHY CANYON BONE SPRING WOLFCAMP	3209 4297 5373 7047 10341

32. Additional remarks (include plugging procedure):

CONFIDENTIAL

Production method - well will free flow then be placed on gas lift

Well is currently shut in- will submit production data via sundry once production starts

Mailing log Attn Chris Walls/Field Office on 08/12/2016

33. Circle enclosed attachments:

1. Electrical/Mechanical Logs (1 full set req'd.) 2. Geologic Report 3. DST Report 4. Directional Survey
5. Sundry Notice for plugging and cement verification 6. Core Analysis 7. Other:

34. I hereby certify that the foregoing and attached information is complete and correct as determined from all available records (see attached instructions):

Electronic Submission #347698 Verified by the BLM Well Information System.
For RKI EXPLORATION & PROD LLC, sent to the Carlsbad

Name (please print) ASHLEE FECHINO

Title REGULATORY SPECIALIST

Signature (Electronic Submission)

Date 08/12/2016

Title 18 U.S.C. Section 1001 and Title 43 U.S.C. Section 1212, make it a crime for any person knowingly and willfully to make to any department or agency of the United States any false, fictitious or fraudulent statements or representations as to any matter within its jurisdiction.

** ORIGINAL ** ORIGINAL ** ORIGINAL ** ORIGINAL ** ORIGINAL ** ORIGINAL ** ORIGINAL **