

UNITED STATES  
DEPARTMENT OF THE INTERIOR  
BUREAU OF LAND MANAGEMENT

OCD Artesia

FORM APPROVED  
OMB NO. 1004-0135  
Expires: July 31, 2010**SUNDRY NOTICES AND REPORTS ON WELLS***Do not use this form for proposals to drill or to re-enter an abandoned well. Use form 3160-3 (APD) for such proposals.*5. Lease Serial No.  
NMNM19612

6. If Indian, Allottee or Tribe Name

7. If Unit or CA/Agreement, Name and/or No.

8. Well Name and No.  
RDX FEDERAL 28 119. API Well No.  
30-015-4210910. Field and Pool, or Exploratory  
ROSS DRAW; DELAWARE, WEST11. County or Parish, and State  
EDDY COUNTY, NM**SUBMIT IN TRIPLICATE - Other instructions on reverse side.**1. Type of Well  
☒ Oil Well ☐ Gas Well ☐ Other2. Name of Operator  
RKI EXP & PROD, LLC  
Contact: JESSICA M DEMARCE  
E-Mail: jessica.demarce@wpenergy.com3a. Address  
3500 ONE WILLIAMS CENTER MD35  
TULSA, OK 741723b. Phone No. (include area code)  
Ph: 539-573-35214. Location of Well (Footage, Sec., T., R., M., or Survey Description)  
Sec 28 T26S R30E 330FNL 690FWL**12. CHECK APPROPRIATE BOX(ES) TO INDICATE NATURE OF NOTICE, REPORT, OR OTHER DATA**

TYPE OF SUBMISSION	TYPE OF ACTION			
<input type="checkbox"/> Notice of Intent	<input type="checkbox"/> Acidize	<input type="checkbox"/> Deepen	<input type="checkbox"/> Production (Start/Resume)	<input type="checkbox"/> Water Shut-Off
<input checked="" type="checkbox"/> Subsequent Report	<input type="checkbox"/> Alter Casing	<input type="checkbox"/> Fracture Treat	<input type="checkbox"/> Reclamation	<input type="checkbox"/> Well Integrity
<input type="checkbox"/> Final Abandonment Notice	<input type="checkbox"/> Casing Repair	<input type="checkbox"/> New Construction	<input type="checkbox"/> Recomplete	<input checked="" type="checkbox"/> Other
	<input type="checkbox"/> Change Plans	<input type="checkbox"/> Plug and Abandon	<input type="checkbox"/> Temporarily Abandon	Site Facility Diagram/Security Plan
	<input type="checkbox"/> Convert to Injection	<input type="checkbox"/> Plug Back	<input type="checkbox"/> Water Disposal	

13. Describe Proposed or Completed Operation (clearly state all pertinent details, including estimated starting date of any proposed work and approximate duration thereof. If the proposal is to deepen directionally or recompleat horizontally, give subsurface locations and measured and true vertical depths of all pertinent markers and zones. Attach the Bond under which the work will be performed or provide the Bond No. on file with BLM/BIA. Required subsequent reports shall be filed within 30 days following completion of the involved operations. If the operation results in a multiple completion or recompletion in a new interval, a Form 3160-4 shall be filed once testing has been completed. Final Abandonment Notices shall be filed only after all requirements, including reclamation, have been completed, and the operator has determined that the site is ready for final inspection.)

SFD DATED 7/7/2016 ABSM DATED 7/7/2016 ATTACHED

**NM OIL CONSERVATION**  
ARTESIA DISTRICT

NOV 14 2016

RECEIVED

Accepted for Record Purposes.  
Approval Subject to Onsite Inspection.  
Date: 09.28.16

14. I hereby certify that the foregoing is true and correct.

Electronic Submission #348433 verified by the BLM Well Information System  
For RKI EXP & PROD, LLC, sent to the Carlsbad  
Committed to AFMSS for processing by DEBORAH MCKINNEY on 08/30/2016 ()

Name (Printed/Typed) JESSICA M DEMARCE

Title REGULATORY TECH

Signature (Electronic Submission)

Date 08/19/2016

**THIS SPACE FOR FEDERAL OR STATE OFFICE USE**

Approved By

Title

Date

Conditions of approval, if any, are attached. Approval of this notice does not warrant or certify that the applicant holds legal or equitable title to those rights in the subject lease which would entitle the applicant to conduct operations thereon.

Office

Title 18 U.S.C. Section 1001 and Title 43 U.S.C. Section 1212, make it a crime for any person knowingly and willfully to make to any department or agency of the United States any false, fictitious or fraudulent statements or representations as to any matter within its jurisdiction.

**\*\* OPERATOR-SUBMITTED \*\* OPERATOR-SUBMITTED \*\* OPERATOR-SUBMITTED \*\***

WPX ENERGY  
RDX EDDY COAL 28-11  
330' FNL & 680' FNL  
UNIT D, SEC. 28-1265-R30E  
LEWIS & CLARK  
EDDY COUNTY, NEW MEXICO

General setting of valves, sales by tank gauge.

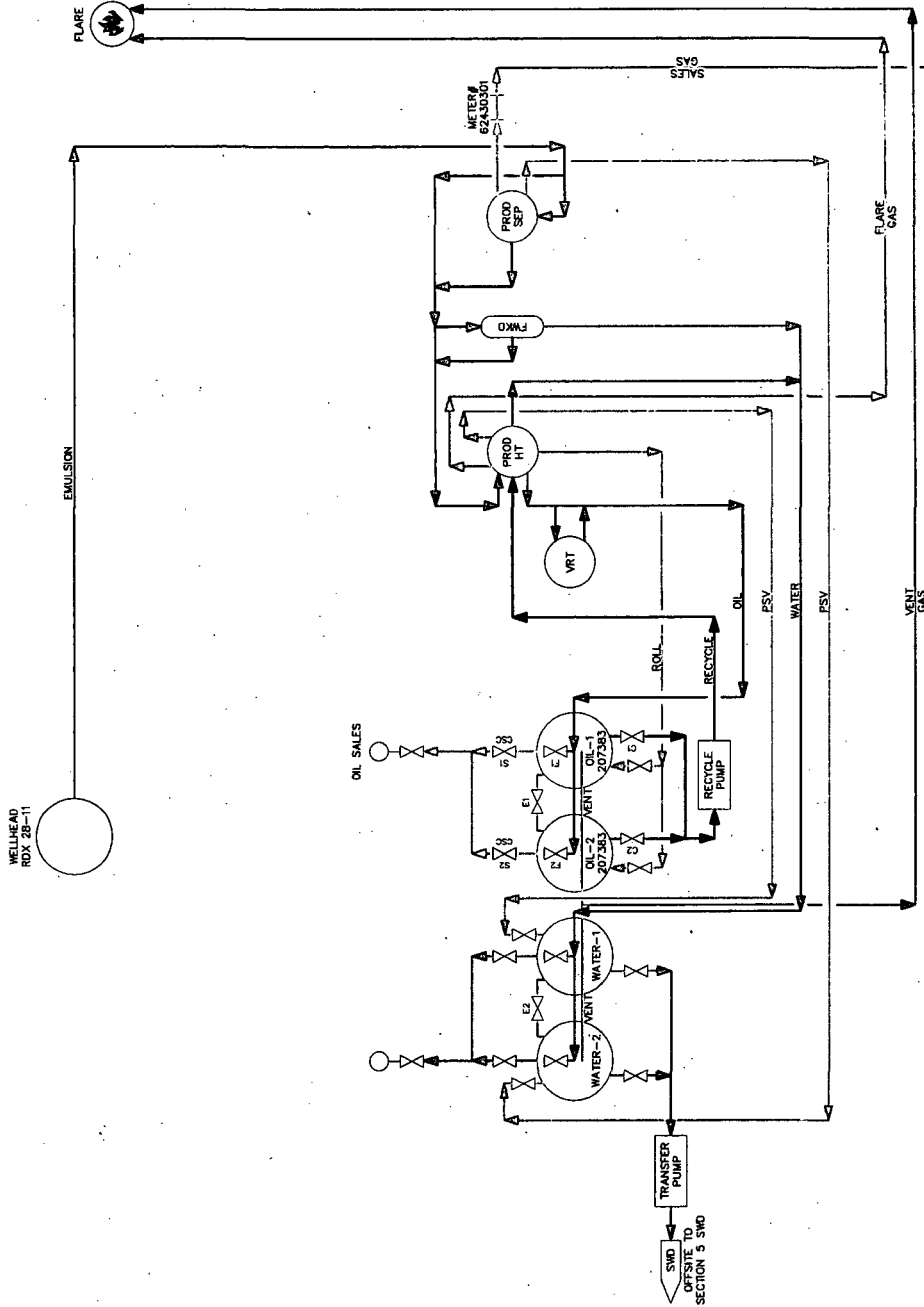
Production Phases: Sales valves S1 and S2 sealed closed. Fill valve to tank that is in production will be open. Equalizer valve to tank that is in production will be open. Circulating valves will be opened as necessary, then released.

Sales Phases: The tank from which sales are being made will be isolated by sealing the fill valve, circulating valve and the equalizer valve during sales and opening the sales valve. Upon completion of the sales the sales valve will be released. Sales by truck will be by tank gauge.

Valve	Production Phase	Sales Phase
S1	Closed	Closed
S2	Closed	Closed
C1	Closed or Open	Closed
C2	Closed or Open	Closed
F1	Open or Closed	Closed or Open
F2	Open or Closed	Closed or Open
E1	Open or Closed	Closed
E2	Open or Closed	Closed

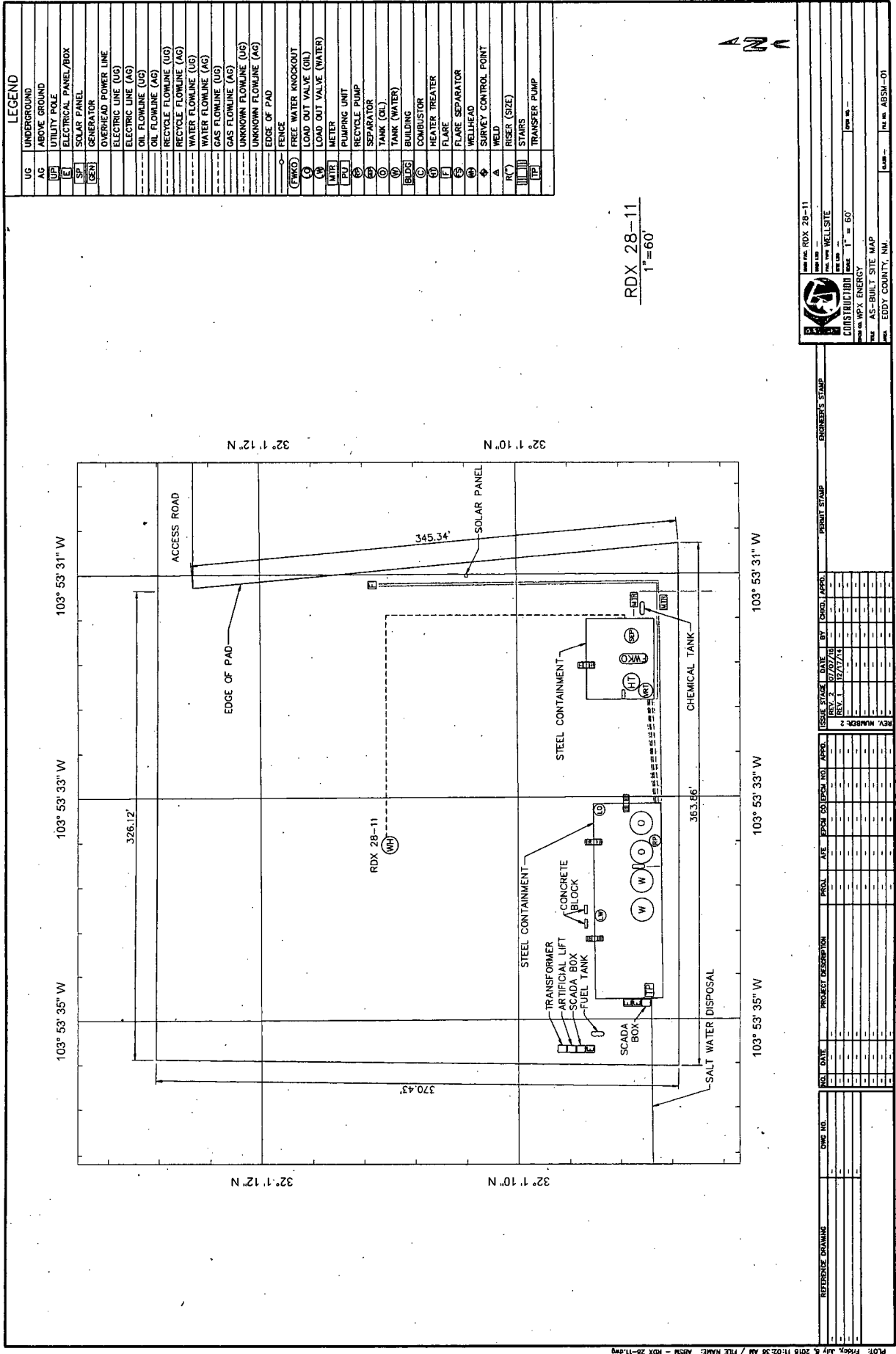
The Site Security Plan is kept at WPX's office located at:  
3310 Buena Vista Dr. Corrales, NM.

RDX 28-11  
N.T.S.



WELLHEAD RDX 28-11		RDX 28-11		WELL SITE	
CONSTRUCTION		N.T.S.		N.T.S.	
SITE FACILITY DIAGRAM		EDDY COUNTY, NEW MEXICO		SFD-01	
REV	DATE	BY	CHKD	APPD	REV
1	12/27/14				1
2	12/27/14				2
3	12/27/14				3
4	12/27/14				4
5	12/27/14				5
6	12/27/14				6
7	12/27/14				7
8	12/27/14				8
9	12/27/14				9
10	12/27/14				10
11	12/27/14				11
12	12/27/14				12
13	12/27/14				13
14	12/27/14				14
15	12/27/14				15
16	12/27/14				16
17	12/27/14				17
18	12/27/14				18
19	12/27/14				19
20	12/27/14				20
21	12/27/14				21
22	12/27/14				22
23	12/27/14				23
24	12/27/14				24
25	12/27/14				25
26	12/27/14				26
27	12/27/14				27
28	12/27/14				28
29	12/27/14				29
30	12/27/14				30
31	12/27/14				31
32	12/27/14				32
33	12/27/14				33
34	12/27/14				34
35	12/27/14				35
36	12/27/14				36
37	12/27/14				37
38	12/27/14				38
39	12/27/14				39
40	12/27/14				40
41	12/27/14				41
42	12/27/14				42
43	12/27/14				43
44	12/27/14				44
45	12/27/14				45
46	12/27/14				46
47	12/27/14				47
48	12/27/14				48
49	12/27/14				49
50	12/27/14				50
51	12/27/14				51
52	12/27/14				52
53	12/27/14				53
54	12/27/14				54
55	12/27/14				55
56	12/27/14				56
57	12/27/14				57
58	12/27/14				58
59	12/27/14				59
60	12/27/14				60
61	12/27/14				61
62	12/27/14				62
63	12/27/14				63
64	12/27/14				64
65	12/27/14				65
66	12/27/14				66
67	12/27/14				67
68	12/27/14				68
69	12/27/14				69
70	12/27/14				70
71	12/27/14				71
72	12/27/14				72
73	12/27/14				73
74	12/27/14				74
75	12/27/14				75
76	12/27/14				76
77	12/27/14				77
78	12/27/14				78
79	12/27/14				79
80	12/27/14				80
81	12/27/14				81
82	12/27/14				82
83	12/27/14				83
84	12/27/14				84
85	12/27/14				85
86	12/27/14				86
87	12/27/14				87
88	12/27/14				88
89	12/27/14				89
90	12/27/14				90
91	12/27/14				91
92	12/27/14				92
93	12/27/14				93
94	12/27/14				94
95	12/27/14				95
96	12/27/14				96
97	12/27/14				97
98	12/27/14				98
99	12/27/14				99
100	12/27/14				100

Accepted for Record Purposes.  
Approval Subject to Onsite Inspection.  
Date: 09.28.16



Plot: Friday, July 8, 2016 11:02:30 AM / FILE NAME: ASDM - RDX 28-11.dwg