

District I
1625 N French Dr., Hobbs, NM 88240
Phone: (575) 393-6161 Fax: (575) 393-0720
District II
811 S First St., Artesia, NM 88210
Phone: (575) 748-1283 Fax: (575) 748-9720
District III
1000 Rio Brazos Road, Aztec, NM 87410
Phone: (505) 334-6178 Fax: (505) 334-6170
District IV
1220 S St. Francis Dr., Santa Fe, NM 87505
Phone: (505) 476-3460 Fax: (505) 476-3462

State of New Mexico
Energy, Minerals & Natural Resources Department
OIL CONSERVATION DIVISION
1220 South St. Francis Dr.
Santa Fe, NM 87505

Form C-102
Revised August 1, 2011
Submit one copy to appropriate
District Office

FEB 16 2017

☐ AMENDED REPORT

WELL LOCATION AND ACREAGE DEDICATION PLAT

¹ API Number 70-025-47610	² Pool Code 97797	³ Pool Name GRAMA RIDGE, WOLF CAMP, WEST
⁴ Property Code 716265	⁵ Property Name GRAMA RIDGE STATE 8	
⁷ OGRID No. 371127	⁶ Operator Name BLACK MOUNTAIN OPERATING, LLC	⁸ Well Number 8H 1H ⁹ Elevation 3536'

¹⁰ Surface Location

UL or lot no.	Section	Township	Range	Lot Idn	Feet from the	North/South line	Feet from the	East/West line	County
O	8	22 SOUTH	34 EAST, N.M.P.M.		250'	SOUTH	1995'	EAST	LEA

¹¹ Bottom Hole Location If Different From Surface

UL or lot no.	Section	Township	Range	Lot Idn	Feet from the	North/South line	Feet from the	East/West line	County
B	8	22 SOUTH	34 EAST, N.M.P.M.		330'	NORTH	2240'	EAST	LEA

¹² Dedicated Acres 140	¹³ Joint or Infill	¹⁴ Consolidation Code	¹⁵ Order No.
--------------------------------------	-------------------------------	----------------------------------	-------------------------

No allowable will be assigned to this completion until all interests have been consolidated or a non-standard unit has been approved by the division.

<p>PROPOSED BOTTOM HOLE LOCATION</p> <p>X= 760,172 NAD 27 Y= 514,788 LAT. 32.412447 LONG. 103.490271</p> <p>X= 801,355 NAD83 Y= 514,849 LAT. 32.412570 LONG. 103.490753</p>	<p>GRAMA RIDGE STATE 8 1H WELL</p> <p>X= 760,447 NAD 27 Y= 510,091 LAT. 32.399529 LONG. 103.489500</p> <p>X= 801,630 NAD83 Y= 510,152 LAT. 32.399653 LONG. 103.489982</p> <p>ELEVATION +3536' NAVD 88</p>	<p>CORNER COORDINATES TABLE (NAD 27)</p> <p>A - Y=515115.64, X=759778.87 B - Y=515133.79, X=782410.14 C - Y=509838.67, X=759808.89 D - Y=509854.60, X=782443.72</p>		<p>¹⁷ OPERATOR CERTIFICATION</p> <p>I hereby certify that the information contained herein is true and complete to the best of my knowledge and belief, and that this organization either owns a working interest or unleased mineral interest in the land including the proposed bottom hole location or has a right to drill this well at this location pursuant to a contract with an owner of such a mineral or working interest, or to a voluntary pooling agreement or a compulsory pooling order heretofore entered by the division.</p> <p>Signature: Denise L. White Date: 2-13-17 Printed Name: Denise L. White E-mail Address: denise.white@blackmtm.com</p> <p>¹⁸ SURVEYOR CERTIFICATION</p> <p>I hereby certify that the well location shown on this plat was plotted from field notes of actual surveys made by me or under my supervision, and that the same is true and correct to the best of my belief.</p> <p>Date of Survey: 01-25-2017 Signature and Seal of Professional Surveyor: Robert L. Estrapes Certificate Number: 23006</p>
--	--	--	--	---

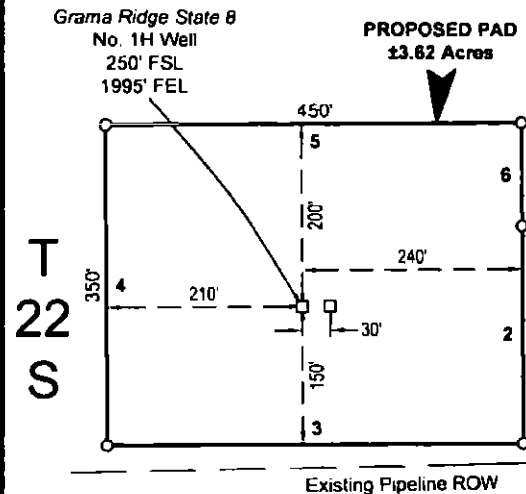
R 34 E

Sec. 8

State of New Mexico
SW 1/4 SE 1/4
(±437.53', ±26.52 Rods-
Proposed Access Road)

SE 1/4 SE 1/4
(±412.32', ±24.99 Rods-
Proposed Access Road)

Future
Grama Ridge State 8
3H & 4H Pad &
Access Road



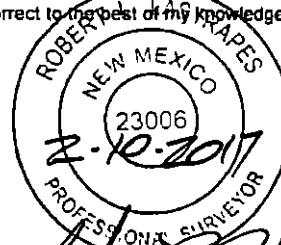
CENTERLINE
PROPOSED
ACCESS ROAD
25' x ±849.85'
±51.51 Rods
±0.49 Acres

N 69° 56' 12" W 965.82'

Point of
Commencement/
Fnd. 2" Iron Pipe
w/Cap @ the SE
Corner of Section 8

Sec. 17

FOR THE EXCLUSIVE USE OF
BLACK MOUNTAIN OPERATING, LLC
I, Robert L. Lastrapes, Professional
Surveyor, do hereby state this plat is true
and correct to the best of my knowledge.



NW PAD CORNER		NE PAD CORNER		GRAMA RIDGE STATE 8 NO. 1H WELL	
X=	760,236 NAD 27	X=	760,686 NAD 27	X=	760,447 NAD 27
Y=	510,290	Y=	510,293	Y=	510,091
ELEVATION +3537' NAVD 88		ELEVATION +3537' NAVD 88		LAT.	32.399529
SW PAD CORNER		SE PAD CORNER		LONG.	103.489500
X=	760,238 NAD 27	X=	760,688 NAD 27	X=	801,630 NAD83
Y=	509,940	Y=	509,943	Y=	510,152
ELEVATION +3528' NAVD 88		ELEVATION +3536' NAVD 88		LAT.	32.399653
				LONG.	103.489982
				ELEVATION +3536' NAVD 88	

SURFACE USE PLAT

Page 1 of 2

BLACK MOUNTAIN OPERATING, LLC

PROPOSED PAD & ACCESS ROAD
GRAMA RIDGE STATE 8 NO. 1H WELL
SECTION 8, T22S-R34E
LEA COUNTY, NEW MEXICO

DRAWN BY: BOR		REVISIONS	
PROJ. MGR.: VHV	No. 1	DATE: 02/07/2017	REVISED BY: BOR
DATE: 11/15/2016	No.	DATE:	REVISED BY:
FILENAME: T:\2016\2164915\DWG\Grama Ridge State 8 1H_SUP_020317.dwg			

C. H. Fenstermaker & Associates, L.L.C.
135 Regency Sq Lafayette, LA 70508
Ph. 337-237-2200 Fax. 337-232-3299
www.fenstermaker.com

Robert L. Lastrapes
Registration No. 23006

LEGEND	
	Centerline Access
	Proposed Pad
	Existing ROW
	Future Pad/Access
	Section Line
	Section Break Line
	Fnd. Monument

Scale: 1" = 200'

200' 0 100' 200'



NOTE:

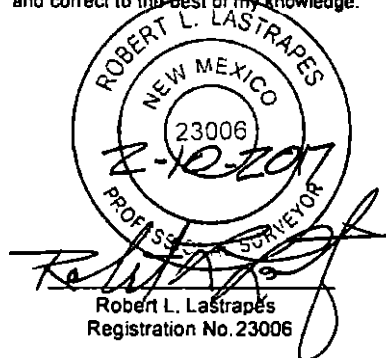
Please be advised, that while reasonable efforts are made to locate and verify pipelines and anomalies using our standard pipeline locating equipment, it is impossible to be 100 % effective. As such, we advise using caution when performing work as there is a possibility that pipelines and other hazards, such as fiber optic cables, PVC pipelines, etc. may exist undetected on site.

NOTE:

Many states maintain information centers that establish links between those who dig (excavators) and those who own and operate underground facilities (operators). It is advisable and in most states, law, for the contractor to contact the center for assistance in locating and marking underground utilities. For guidance: New Mexico One Call - www.nmonecall.org

DISCLAIMER: At this time, C. H. Fenstermaker & Associates, L.L.C. has not performed nor was asked to perform any type of engineering, hydrological modeling, flood plain, or "No Rise" certification analyses, including but not limited to determining whether the project will impact flood hazards in connection with federal/FEMA, state, and/or local laws, ordinances and regulations. Accordingly, Fenstermaker makes no warranty or representation of any kind as to the foregoing issues, and persons or entities using this information shall do so at their own risk.

FOR THE EXCLUSIVE USE OF
BLACK MOUNTAIN OPERATING, LLC
I, Robert L. Lastrapes, Professional
Surveyor, do hereby state this plat is true
and correct to the best of my knowledge.



CENTERLINE PROPOSED ACCESS ROAD		
COURSE	BEARING	DISTANCE
1	S 89° 36' 36" W	849.85'

PROPOSED PAD		
COURSE	BEARING	DISTANCE
2	S 00° 23' 24" E	237.50'
3	S 89° 36' 36" W	450.00'
4	N 00° 23' 24" W	350.00'
5	N 89° 36' 36" E	450.00'
6	S 00° 23' 24" E	112.50'

SURFACE USE PLAT

Page 2 of 2

BLACK MOUNTAIN OPERATING, LLC

PROPOSED PAD & ACCESS ROAD
GRAMA RIDGE STATE 8 NO. 1H WELL
SECTION 8, T22S-R34E
LEA COUNTY, NEW MEXICO

DRAWN BY: BOR

REVISIONS

PROJ. MGR.: VHV

No. 1

DATE: 02/07/2017

REVISED BY: BOR

DATE: 11/15/2016

No.

DATE:

REVISED BY:

FILENAME: T:\2016\2164915\DWG\Grama Ridge State 8 1H_SUP_020317.dwg



C. H. Fenstermaker & Associates, L.L.C.
135 Regency Sq Lafayette, LA 70508
Ph. 337-237-2200 Fax 337-232-3289
www.fenstermaker.com