

District I
1625 N. French Dr., Hobbs, NM 88240
Phone: (575) 393-6161 Fax: (575) 393-0720
District II
811 S. First St., Artesia, NM 88210
Phone: (575) 748-1283 Fax: (575) 748-9720
District III
1000 Rio Brazos Road, Aztec, NM 87410
Phone: (505) 334-6178 Fax: (505) 334-6170
District IV
1220 S. St. Francis Dr., Santa Fe, NM 87505
Phone: (505) 476-3460 Fax: (505) 476-3462

State of New Mexico
Energy, Minerals & Natural Resources Department
OIL CONSERVATION DIVISION
1220 South St. Francis Dr.
Santa Fe, NM 87505

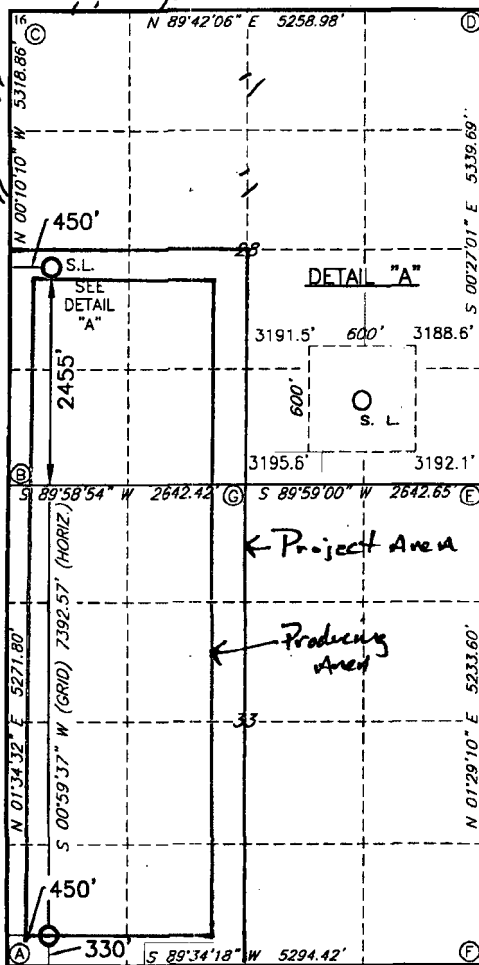
Form C-102
Revised August 1, 2011
Submit one copy to appropriate
District Office

☒ AMENDED REPORT
2/1/17

WELL LOCATION AND ACREAGE DEDICATION PLAT

1 API Number 30-015-43969		2 Pool Code 7678098220		3 Pool Name PURPLE SAGE FORHARD RANCH WOLF CAMP (GAS)					
4 Property Code 317123		5 Property Name HOLLYWOOD 28/33 W2LM FED COM				6 Well Number 1H			
7 GRID NO. 14744		8 Operator Name MEWBOURNE OIL COMPANY				9 Elevation 3192'			
10 Surface Location									
UL or lot no. L	Section 28	Township 23S	Range 27E	Lot Idn	Feet from the 2455	North/South line SOUTH	Feet From the 450	East/West line WEST	County EDDY
11 Bottom Hole Location If Different From Surface									
UL or lot no. M	Section 33	Township 23S	Range 27E	Lot Idn	Feet from the 330	North/South line SOUTH	Feet from the 450	East/West line WEST	County EDDY
12 Dedicated Acres 480.640		13 Joint or Infill		14 Consolidation Code		15 Order No. R-14262			

No allowable will be assigned to this completion until all interest have been consolidated or a non-standard unit has been approved by the division.



GEODETIC DATA NAD 27 GRID - NM EAST SURFACE LOCATION N 463783.9 - E 540725.0 LAT: 32.27498992° N LONG: 104.20156534° W BOTTOM HOLE N 456393.9 - E 540596.5 LAT: 32.25467562° N LONG: 104.20201042° W	GEODETIC DATA NAD 83 GRID - NM EAST SURFACE LOCATION N 463842.4 - E 581907.3 LAT: 32.27510904° N LONG: 104.20206456° W BOTTOM HOLE N 456452.3 - E 581779.0 LAT: 32.25479541° N LONG: 104.20250886° W
--	--

CORNER DATA
NAD 27 GRID - NM EAST
A: CALCULATED CORNER
N 456060.8 - E 540137.5
B: FOUND 1/2" REBAR
N 461329.4 - E 540282.4
C: FOUND 1 1/2" IRON PIPE
N 466641.9 - E 540266.6
D: CALCULATED CORNER
N 466669.3 - E 545524.3
E: FOUND 1/2" REBAR
N 461331.0 - E 545566.3
F: CALCULATED CORNER
N 456100.3 - E 545430.6
G: FOUND 100D NAIL
N 461330.2 - E 542924.3

17 OPERATOR CERTIFICATION

I hereby certify that the information contained herein is true and complete to the best of my knowledge and belief, and that this organization either owns a working interest or unleased mineral interest in the land including the proposed bottom hole location or has a right to drill this well at this location pursuant to a contract with an owner of such a mineral or working interest, or to a voluntary pooling agreement or a compulsory pooling order heretofore entered by the division.

B. Bishop 4-14-16
Signature Date
BRADLEY BISHOP
Printed Name

E-mail Address

18 SURVEYOR CERTIFICATION

I hereby certify that the well location shown on this plat was plotted from field notes of actual surveys made by me or under my supervision, and that the same is true and correct to the best of my belief.

4-11-2016
Date of Survey

Signature and Seal of Professional Surveyor

19680
Certificate Number

