

District I

1625 N. French Dr., Hobbs, NM 88240

District II

1301 W. Grand Avenue, Artesia, NM 88210

District III

1000 Rio Brazos Rd., Aztec, NM 87410

District IV

1220 S. St. Francis Dr., Santa Fe, NM 87505

State of New Mexico

Energy, Minerals & Natural Resources Department

OIL CONSERVATION DIVISION

1220 South St. Francis Dr. RECEIVED

Santa Fe, NM 87505

Revised October 15, 2009

Submit one copy to appropriate

District Office

☒ AMENDED REPORT

WELL LOCATION AND ACREAGE DEDICATION PLAT

¹ API Number 30-015-40025	² Pool Code 98199	³ Pool Name PARKWAY; BONE SPRING, WEST
⁴ Property Code 39110	⁵ Property Name LONGBOARD PWU 20	⁶ Well Number 1H
⁷ OGRID No. 6137	⁸ Operator Name DEVON ENERGY PRODUCTION COMPANY, L.P.	⁹ Elevation 3340.3

¹⁰ Surface Location

U/L or lot no.	Section	Township	Range	Lot Idn	Feet from the	North/South line	Feet from the	East/West line	County
E	20	19 S	29 E		1500	NORTH	355	WEST	EDDY

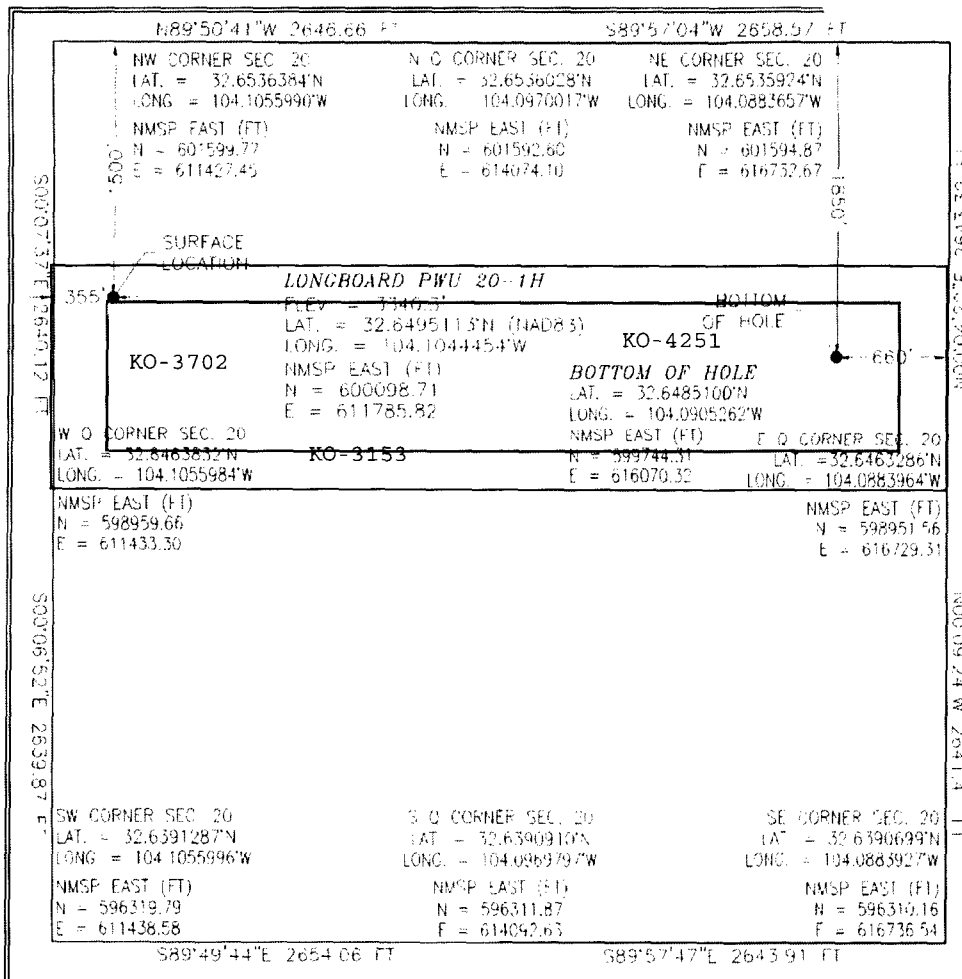
¹¹ Bottom Hole Location If Different From Surface

U/L or lot no.	Section	Township	Range	Lot Idn	Feet from the	North/South line	Feet from the	East/West line	County
H	20	19 S	29 E		1850	NORTH	660	EAST	EDDY

¹² Dedicated Acres 160	¹³ Joint or Infill	¹⁴ Consolidation Code	¹⁵ Order No. R-14188	¹⁶ ...wells having less than 320 dedicated acres may increase spacing to the standard 320-acre spacing by filing application to increase spacing as provided by Division rules...
---	-------------------------------	----------------------------------	---	--

No allowable will be assigned to this completion until all interests have been co division.

ed by the rules...

¹⁷ OPERATOR CERTIFICATION

I hereby certify that the information contained herein is true and complete to the best of my knowledge and belief, and that this organization either owns a working interest or unleased mineral interest in the land including the proposed bottom hole location or has a right to drill this well at this location pursuant to a contract with an owner of such a mineral or working interest, or to a voluntary pooling agreement or a compulsory pooling order heretofore entered by the division.

Erin Workman 03/15/2017
 Signature Date

Printed Name **Erin Workman**
 erin.workman@dv.com

¹⁸ SURVEYOR CERTIFICATION

I hereby certify that the well location shown on this plat was plotted from field notes of actual surveys made by me or under my supervision, and that the same is true and correct to the best of my belief.

APRIL 5, 2012

Date of Survey

Signature and Seal of Professional Surveyor:

Certificate Number **FILEMON E. JARAMILLO, PLS 12797**
 SURVEY NO. 1001

Project Area:

Producing Area: