

DISTRICT I
1625 N. FRENCH DR., ROBBES, NM 88240
Phone: (505) 393-8181 Fax: (505) 393-0720

DISTRICT II
811 S. FIRST ST., ARTESIA, NM 88210
Phone: (505) 748-1283 Fax: (505) 748-8720

DISTRICT III
1000 RIO BRAZOS RD., AZTEC, NM 87410
Phone: (505) 334-8178 Fax: (505) 334-8170

DISTRICT IV
1229 S. ST. FRANCIS DR., SANTA FE, NM 87505
Phone: (505) 478-3480 Fax: (505) 478-3482

State of New Mexico
Energy, Minerals & Natural Resources Department
OIL CONSERVATION DIVISION
1220 SOUTH ST. FRANCIS DR.
Santa Fe, New Mexico 87505

Form C-102
Revised August 1, 2011
Submit one copy to appropriate
District Office

☐ AMENDED REPORT

WELL LOCATION AND ACREAGE DEDICATION PLAT

API Number 30-015- 44118	Pool Code 98220	Pool Name Purple Sage; Wolfcamp
Property Code 38529	Property Name COPPERHEAD 31 FEDERAL COM	Well Number 21H
OGRID No. 217955	Operator Name COG PRODUCTION, LLC	Elevation 2928.8'

Surface Location

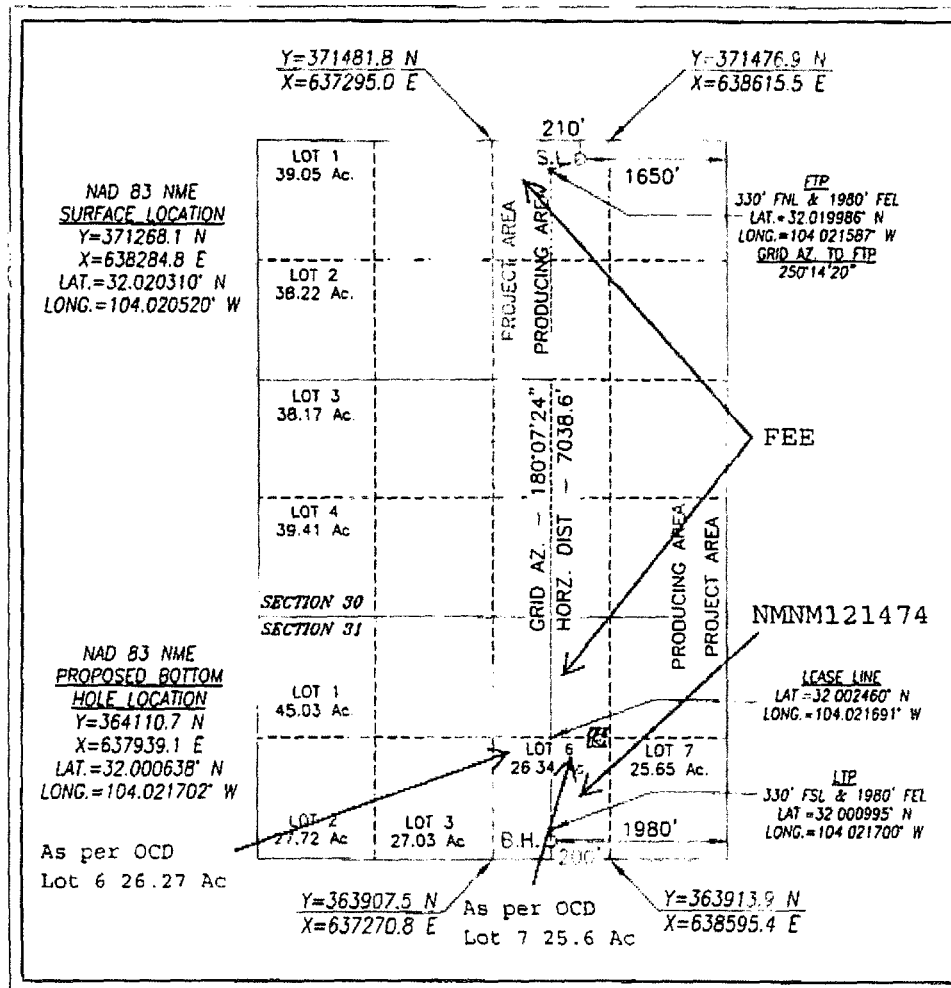
UL or lot No.	Section	Township	Range	Lot Idn	Feet from the	North/South line	Feet from the	East/West line	County
B	30	26-S	29-E		210	NORTH	1650	EAST	EDDY

Bottom Hole Location If Different From Surface

UL or lot No.	Section	Township	Range	Lot Idn	Feet from the	North/South line	Feet from the	East/West line	County
6	31	26-S	29-E		200	SOUTH	1980	EAST	EDDY

Dedicated Acres	Joint or Infill	Consolidation Code	Order No.
451.87			

NO ALLOWABLE WILL BE ASSIGNED TO THIS COMPLETION UNTIL ALL INTERESTS HAVE BEEN CONSOLIDATED
OR A NON-STANDARD UNIT HAS BEEN APPROVED BY THE DIVISION



OPERATOR CERTIFICATION

I hereby certify that the information herein is true and complete to the best of my knowledge and belief, and that this organization either owns a working interest or unleased mineral interest in the land including the proposed bottom hole location or has a right to drill this well at this location pursuant to a contract with an owner of such mineral or working interest, or to a voluntary pooling agreement or a compulsory pooling order heretofore entered by the division.

Signature Mayte Reyes Date 2-16-17

Printed Name
Mayte Reyes

E-mail Address
mreyes1@concho.com

SURVEYOR CERTIFICATION

I hereby certify that the well location shown on this plat was plotted from field notes of actual surveys made by me or under my supervision, and that the same is true and correct to the best of my belief.

NOVEMBER 30, 2016

Date of Survey

Signature & Seal of Professional Surveyor



Signature Chad Harcrow Date 2/10/17
Certificate No. CHAD HARCROW 17777
W.O. # 17-161 DRAWN BY: JH