

1033 N. French Dr., Hobbs, NM 88240  
Phone: (575) 393-6161 Fax: (575) 393-6720  
211 S. First St., Artesia, NM 88210  
Phone: (575) 749-1203 Fax: (575) 749-0770  
1000 Rio Pecos Road, Aztec, NM 87416  
Phone: (505) 334-6129 Fax: (505) 334-6170  
1226 E. St. Francis Dr., Stee Fe, NM 87581  
Phone: (505) 476-3468 Fax: (505) 476-3462

State of New Mexico  
Energy, Minerals & Natural Resources Department  
OIL CONSERVATION DIVISION  
1220 South St. Francis Dr.  
Santa Fe, NM 87505

Form C-102  
Revised August 1, 2011  
Submit one copy to appropriate  
District Office

AMENDED REPORT

WELL LOCATION AND ACREAGE DEDICATION PLAT

API Number <b>30-015-44194</b>	Pool Code <b>60660</b>	Pool Name <b>Turkey Track ; Bone Spring</b>
Property Code <b>317701</b>	Property Name <b>TURKEY TRACK "9-10" STATE</b>	Well Number <b>33H</b>
CGED No. <b>192463</b>	Operator Name <b>OXY USA WTP LP</b>	Elevation <b>3379.6'</b>

Surface Location

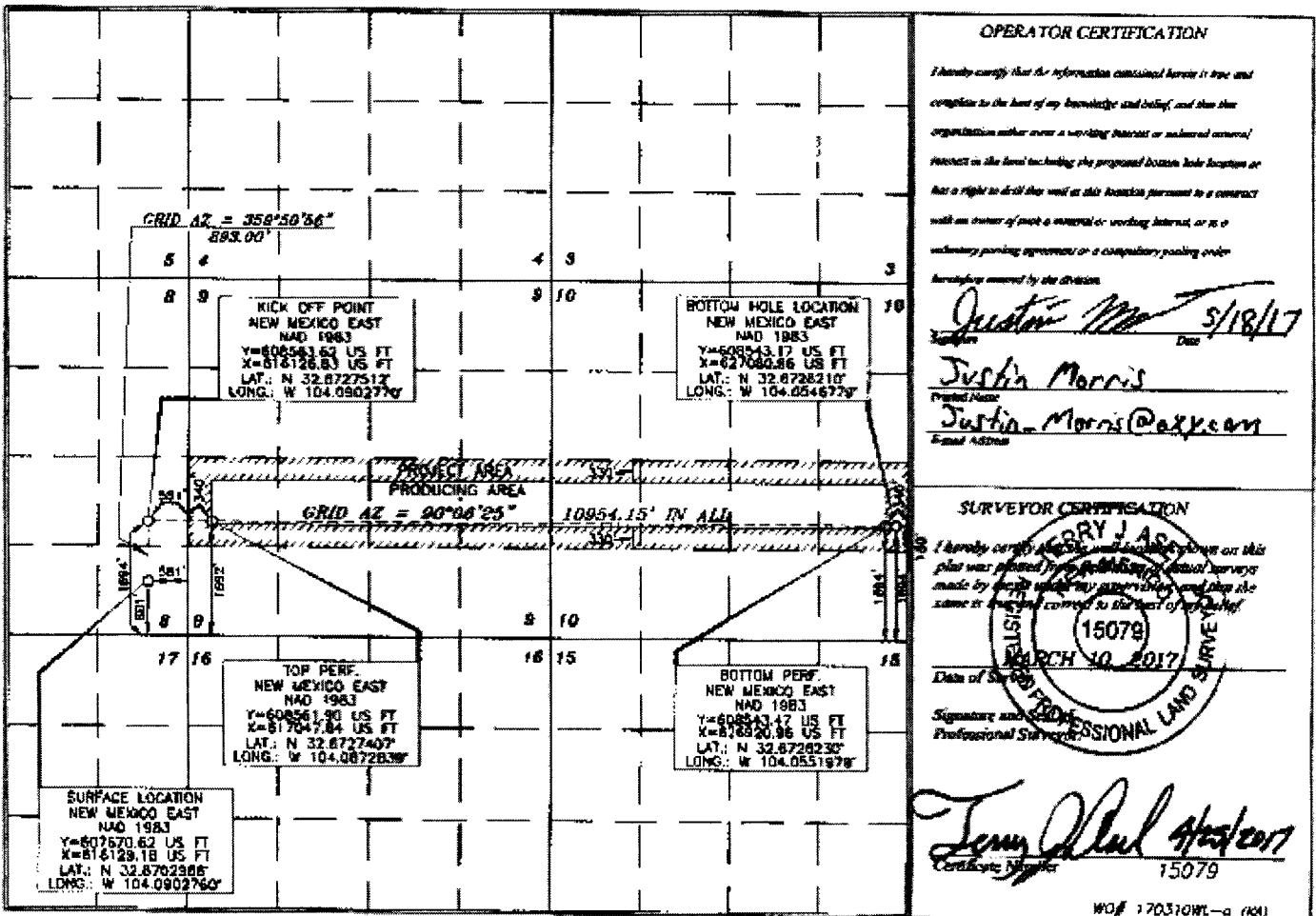
UL or lot no.	Section	Township	Range	Lot	Feet from the	North/South line	Feet from the	East/West line	County
P	8	19 SOUTH	29 EAST, N.M.P.M.		801'	SOUTH	581'	EAST	EDDY

Bottom Hole Location If Different From Surface

UL or lot no.	Section	Township	Range	Lot	Feet from the	North/South line	Feet from the	East/West line	County
1	10	19 SOUTH	29 EAST, N.M.P.M.		1694'	SOUTH	180'	EAST	EDDY

Dedicated Acres <b>320</b>	Joint or Infill <b>Y</b>	Consolidation Code	Order No.
-------------------------------	-----------------------------	--------------------	-----------

No allowable will be assigned to this completion until all interests have been consolidated or a non-standard unit has been approved by the division.



**OPERATOR CERTIFICATION**  
I hereby certify that the information contained herein is true and complete to the best of my knowledge and belief, and that the organization neither owns a working interest or mineral interest interest in the land including the proposed bottom hole location or has a right to drill the well in this location pursuant to a contract with an owner of such a mineral or working interest, or is a voluntary pooling agreement or a compulsory pooling order heretofore entered by the division.  
*Justin Morris* 5/18/17  
Justin Morris  
Justin.Morris@oxy.com

**SURVEYOR CERTIFICATION**  
I hereby certify that the well location shown on this plat was plotted by a professional land survey made by me or under my supervision and that the same is true and correct to the best of my belief.  
TERRY J. ASH  
15079  
MARCH 10, 2017  
Terry Ash  
15079

WOP 170310WL-a (04)

red 5-22-17