

DISTRICT I
1625 N. French Dr., Hobbs, NM 88240
Phone: (505) 393-6161 Fax: (505) 393-0720

DISTRICT II
811 S. First St., Artesia, NM 88210
Phone: (505) 748-1283 Fax: (505) 748-9720

DISTRICT III
1000 Rio Brazos Road, Aztec, NM 87410
Phone: (505) 334-6178 Fax: (505) 334-6170

DISTRICT IV
1220 S. St. Francis Dr., Santa Fe, NM 87505
Phone: (505) 476-3460 Fax: (505) 476-3462

State of New Mexico
Energy, Minerals & Natural Resources Department
OIL CONSERVATION DIVISION
1220 South St. Francis Dr.
Santa Fe, New Mexico 87505

NM OIL CONSERVATION
ARTESIA DISTRICT
JUL 07 2017
Form C-102
Revised August 1, 2011
Submit one copy to appropriate District Office
AMENDED REPORT
RECEIVED

WELL LOCATION AND ACREAGE DEDICATION PLAT

API Number 30-015-43579	Pool Code 98211	Pool Name WC-0151-G-03 S262425D BS
Property Code	Property Name ROSS DRAW 25	Well Number 31H
OGRID No. 005380	Operator Name XTO ENERGY	Elevation 2927'

Surface Location

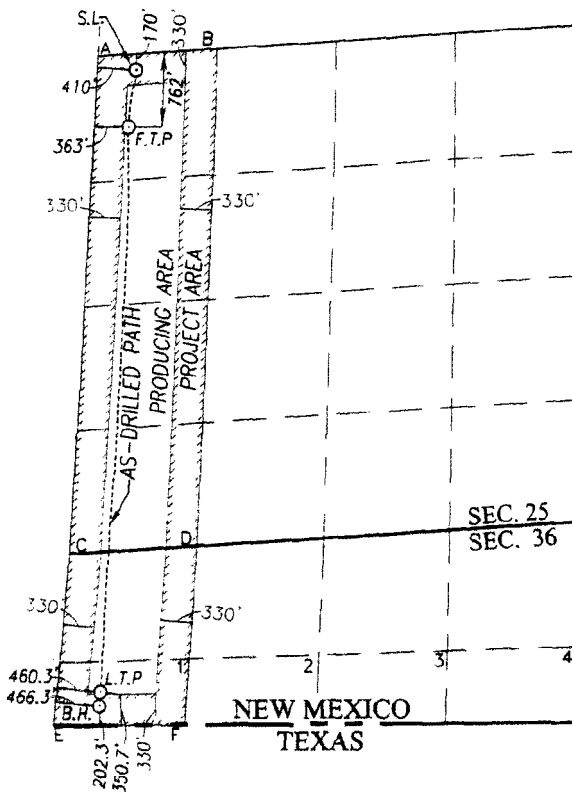
UL or lot No.	Section	Township	Range	Lot Idn	Feet from the	North/South line	Feet from the	East/West line	County
D	25	26-S	29-E		170	NORTH	410	WEST	EDDY

As-Drilled Bottom Hole Location If Different From Surface

UL or lot No.	Section	Township	Range	Lot Idn	Feet from the	North/South line	Feet from the	East/West line	County
1	36	26-S	29-E		202.3	SOUTH	466.3	WEST	EDDY
Dedicated Acres	Joint or Infill	Consolidation Code	Order No.						

NO ALLOWABLE WILL BE ASSIGNED TO THIS COMPLETION UNTIL ALL INTERESTS HAVE BEEN CONSOLIDATED OR A NON-STANDARD UNIT HAS BEEN APPROVED BY THE DIVISION

SCALE: 1"=2000'



NOTE: AS-DRILLED BOTTOM HOLE PLOTTED FROM DATA FURNISHED BY XTO ENERGY

GEODETIC COORDINATES
NAD 27 NME
SURFACE LOCATION
Y= 370921.9 N
X= 620704.9 E
LAT.=32.019180° N
LONG.=103.943876° W

FIRST TAKE POINT
Y= 370323.8 N
X= 620625.0 E
LAT.=32.017537° N
LONG.=103.944141° W

CORNER COORDINATES TABLE

NAD 27 NME
A - Y=371066.8 N, X=620302.2 E
B - Y=371147.1 N, X=621575.8 E
C - Y=365747.2 N, X=620011.1 E
D - Y=365830.5 N, X=621363.3 E
E - Y=363935.3 N, X=619847.7 E
F - Y=363940.8 N, X=621243.2 E

CORNER COORDINATES TABLE

NAD 83 NME
A - Y=371124.2 N, X=661488.2 E
B - Y=371204.5 N, X=662761.8 E
C - Y=365804.5 N, X=661197.2 E
D - Y=365887.8 N, X=662549.4 E
E - Y=363992.5 N, X=661033.8 E
F - Y=363998.0 N, X=662429.4 E

GEODETIC COORDINATES
NAD 27 NME
LAST TAKE POINT
Y=364287.8 N
X=620341.6 E
LAT.=32.000947° N
LONG.=103.945125° W

GEODETIC COORDINATES
NAD 83 NME
LAST TAKE POINT
Y=364345.1 N
X=661527.7 E
LAT.=32.001072° N
LONG.=103.945605° W

AS-DRILLED
BOTTOM HOLE LOCATION
Y=364139.5 N
X=620334.2 E
LAT.=32.000539° N
LONG.=103.945151° W

AS-DRILLED
BOTTOM HOLE LOCATION
Y=364196.7 N
X=661520.3 E
LAT.=32.000664° N
LONG.=103.945630° W

OPERATOR CERTIFICATION

I hereby certify that the information herein is true and complete to the best of my knowledge and belief, and that this organization either owns a working interest or unless mineral interest in the land including the proposed bottom hole location or has a right to drill this well at this location pursuant to a contract with an owner of such mineral or working interest, or to a voluntary pooling agreement or a compulsory pooling order heretofore entered by the division.

Signature: *Patricia Donald* Date: *5/2/17*

Printed Name: *Patricia Donald*

E-mail Address: *Patricia.Donald@xtoenergy.com*

SURVEYOR CERTIFICATION

I hereby certify that the well location shown on this plat was plotted from field notes of actual surveys made by me or under my supervision, and that the same is true and correct to the best of my belief.

JANUARY 7, 2015

Date of Survey
Signature & Seal of Professional Surveyor:

Signature: *Ronald J. Eidson*
Certificate Number: *12641*
Gary G. Eidson 12641
Ronald J. Eidson 3239
ACK REL W.O. 16120463 JWSC W.O. 16130989