

UNITED STATES
DEPARTMENT OF THE INTERIOR
BUREAU OF LAND MANAGEMENT

FORM APPROVED
OMB NO. 1004-0137
Expires: January 31, 2018

SUNDRY NOTICES AND REPORTS ON WELLS
Do not use this form for proposals to drill or to re-enter an abandoned well. Use form 3160-3 (APD) for such proposals.

Carlsbad Field Office
OCD Artesia

SUBMIT IN TRIPLICATE - Other instructions on page 2		7. If Unit or CA/Agreement, Name and/or No.
1. Type of Well <input checked="" type="checkbox"/> Oil Well <input type="checkbox"/> Gas Well <input type="checkbox"/> Other	8. Well Name and No. REALLY SCARY FEDERAL 5H	
2. Name of Operator COG OPERATING LLC	Contact: AMANDA AVERY E-Mail: aaavery@concho.com	9. API Well No. 30-015-40241
3a. Address 2208 W MAIN STREET ARTESIA, NM 88210	3b. Phone No. (include area code) Ph: 575-748-6940	10. Field and Pool or Exploratory Area WILLOW LAKE; BONE SPRING
4. Location of Well (Footage, Sec., T., R., M., or Survey Description) Sec 33 T24S R28E 380FSL 990FEL		11. County or Parish, State EDDY COUNTY, NM

12. CHECK THE APPROPRIATE BOX(ES) TO INDICATE NATURE OF NOTICE, REPORT, OR OTHER DATA

TYPE OF SUBMISSION	TYPE OF ACTION			
<input type="checkbox"/> Notice of Intent	<input type="checkbox"/> Acidize	<input type="checkbox"/> Deepen	<input type="checkbox"/> Production (Start/Resume)	<input type="checkbox"/> Water Shut-Off
<input checked="" type="checkbox"/> Subsequent Report	<input type="checkbox"/> Alter Casing	<input type="checkbox"/> Hydraulic Fracturing	<input type="checkbox"/> Reclamation	<input type="checkbox"/> Well Integrity
<input type="checkbox"/> Final Abandonment Notice	<input type="checkbox"/> Casing Repair	<input type="checkbox"/> New Construction	<input type="checkbox"/> Recomplete	<input checked="" type="checkbox"/> Other
	<input type="checkbox"/> Change Plans	<input type="checkbox"/> Plug and Abandon	<input type="checkbox"/> Temporarily Abandon	Onshore Order Variance
	<input type="checkbox"/> Convert to Injection	<input type="checkbox"/> Plug Back	<input type="checkbox"/> Water Disposal	

13. Describe Proposed or Completed Operation: Clearly state all pertinent details, including estimated starting date of any proposed work and approximate duration thereof. If the proposal is to deepen directionally or recompleat horizontally, give subsurface locations and measured and true vertical depths of all pertinent markers and zones. Attach the Bond under which the work will be performed or provide the Bond No. on file with BLM/BIA. Required subsequent reports must be filed within 30 days following completion of the involved operations. If the operation results in a multiple completion or recompleat in a new interval, a Form 3160-4 must be filed once testing has been completed. Final Abandonment Notices must be filed only after all requirements, including reclamation, have been completed and the operator has determined that the site is ready for final inspection.

COG Operating LLC respectfully requests to designate Meter #88522106 as the official facility measurement point (FMP) for gas produced from this well. (Please see attached site facility diagram.) The FMP meter is located on lease NMNM115411 at the Really Scary Federal #5H battery. Meter meets API and AGA standards and will be calibrated in compliance with all federal requirements and regulations.

NM OIL CONSERVATION
ARTESIA DISTRICT

AUG 01 2017

OC 8-2-17
Accepted for record - NMOCD

RECEIVED

14. I hereby certify that the foregoing is true and correct.	
Electronic Submission #371974 verified by the BLM Well Information System For COG OPERATING LLC, sent to the Carlsbad Committed to AFMSS for processing by DEBORAH MCKINNEY on 04/04/2017 ()	
Name (Printed/Typed) AMANDA AVERY	Title AUTHORIZED REPRESENTATIVE
Signature (Electronic Submission)	Date 04/04/2017

THIS SPACE FOR FEDERAL OR STATE OFFICE USE

Approved By <i>J. D. Whitlock</i>	Title TLDET	Date 7/24/17
Conditions of approval, if any, are attached. Approval of this notice does not warrant or certify that the applicant holds legal or equitable title to those rights in the subject lease which would entitle the applicant to conduct operations thereon.		Office CFO

Title 18 U.S.C. Section 1001 and Title 43 U.S.C. Section 1212, make it a crime for any person knowingly and willfully to make to any department or agency of the United States any false, fictitious or fraudulent statements or representations as to any matter within its jurisdiction.

(Instructions on page 2)

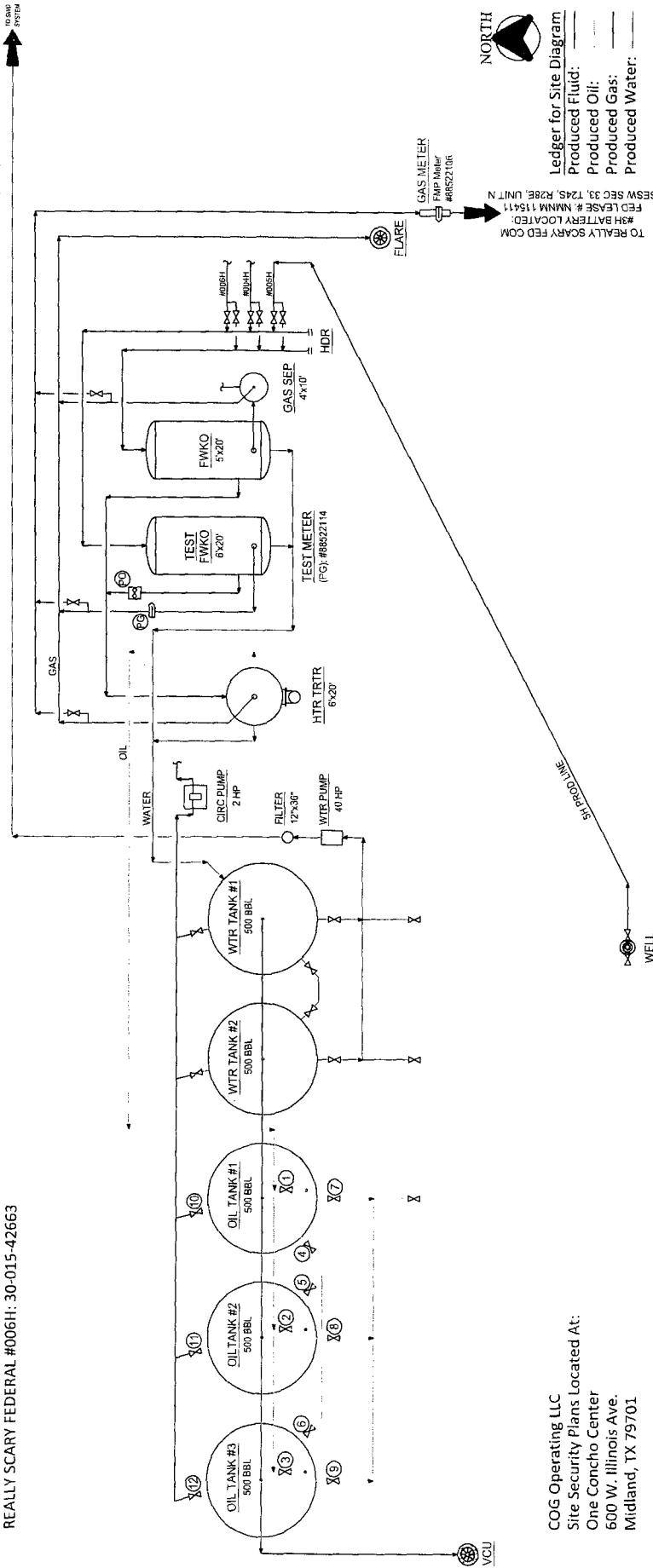
**** OPERATOR-SUBMITTED ** OPERATOR-SUBMITTED ** OPERATOR-SUBMITTED ****

REALLY SCARY FEDERAL 5H BATTERY
SESE SECTION 33, T24S, R28E, UNIT P
EDDY COUNTY, NM

WELLS:
REALLY SCARY FEDERAL #004H: 30-015-41670
REALLY SCARY FEDERAL #005H: 30-015-40241
REALLY SCARY FEDERAL #006H: 30-015-42663

Production Phase - Oil Tank #1
- Valve 1 open
- Valves 2 or 3 closed
- Valves 4, 5, and 6 open
- Valves 7, 8, and 9 closed
- Valves 10, 11, and 12 closed

Sales Phase - Oil Tank #1
- Valve 1 closed
- Valves 2 or 3 open
- Valve 4 closed
- Valves 5 and 6 open
- Valve 7 open
- Valves 8 and 9 closed
- Valves 10, 11, and 12 closed



COG Operating LLC
Site Security Plans Located At:
One Concho Center
600 W. Illinois Ave.
Midland, TX 79701

NOTES

Type of Lease: Federal
Federal Lease #: NMNM 115411
Property Code: 308286
OGRID #: 229137

CONFIDENTIALITY NOTICE
THIS DRAWING IS PROPERTY OF CONCHO OIL & GAS, INC. AND IS NOT TO BE REPRODUCED OR TRANSMITTED IN ANY FORM OR BY ANY MEANS, ELECTRONIC OR MECHANICAL, INCLUDING PHOTOCOPYING, RECORDING, OR BY ANY INFORMATION STORAGE AND RETRIEVAL SYSTEM, WITHOUT THE WRITTEN PERMISSION OF CONCHO OIL & GAS, INC. ANY UNAUTHORIZED REPRODUCTION OR TRANSMISSION OF THIS DRAWING IS STRICTLY PROHIBITED AND WILL BE SUBJECT TO THE FULL AND COMPLETE LIABILITY OF THE USER. THIS DRAWING IS NOT TO BE USED FOR ANY PURPOSE OTHER THAN THAT FOR WHICH IT WAS SPECIFICALLY PREPARED.

REFERENCE DRAWINGS
NO. TITLE
1. COG OPERATING LLC
600 WEST ILLINOIS AVENUE
MIDLAND, TEXAS 79701

NO.	DATE	DESCRIPTION	BY	CHK.	APP.
A	06/07/12	ISSUE FOR SITE PRINTING	CHB		
B	06/27/12	REVISED FOR REALLY SCARY FED 5H BATTERY	CHB		
C	02/26/17	REVISED GAS MTR	CHB		

NO.	DATE	DESCRIPTION	BY	CHK.	APP.
A	06/07/12	ISSUE FOR SITE PRINTING	CHB		
B	06/27/12	REVISED FOR REALLY SCARY FED 5H BATTERY	CHB		
C	02/26/17	REVISED GAS MTR	CHB		

NO.	DATE	DESCRIPTION	BY	CHK.	APP.
A	06/07/12	ISSUE FOR SITE PRINTING	CHB		
B	06/27/12	REVISED FOR REALLY SCARY FED 5H BATTERY	CHB		
C	02/26/17	REVISED GAS MTR	CHB		

NO.	DATE	DESCRIPTION	BY	CHK.	APP.
A	06/07/12	ISSUE FOR SITE PRINTING	CHB		
B	06/27/12	REVISED FOR REALLY SCARY FED 5H BATTERY	CHB		
C	02/26/17	REVISED GAS MTR	CHB		

NO.	DATE	DESCRIPTION	BY	CHK.	APP.
A	06/07/12	ISSUE FOR SITE PRINTING	CHB		
B	06/27/12	REVISED FOR REALLY SCARY FED 5H BATTERY	CHB		
C	02/26/17	REVISED GAS MTR	CHB		

NO.	DATE	DESCRIPTION	BY	CHK.	APP.
A	06/07/12	ISSUE FOR SITE PRINTING	CHB		
B	06/27/12	REVISED FOR REALLY SCARY FED 5H BATTERY	CHB		
C	02/26/17	REVISED GAS MTR	CHB		

NO.	DATE	DESCRIPTION	BY	CHK.	APP.
A	06/07/12	ISSUE FOR SITE PRINTING	CHB		
B	06/27/12	REVISED FOR REALLY SCARY FED 5H BATTERY	CHB		
C	02/26/17	REVISED GAS MTR	CHB		

NO.	DATE	DESCRIPTION	BY	CHK.	APP.
A	06/07/12	ISSUE FOR SITE PRINTING	CHB		
B	06/27/12	REVISED FOR REALLY SCARY FED 5H BATTERY	CHB		
C	02/26/17	REVISED GAS MTR	CHB		

NO.	DATE	DESCRIPTION	BY	CHK.	APP.
A	06/07/12	ISSUE FOR SITE PRINTING	CHB		
B	06/27/12	REVISED FOR REALLY SCARY FED 5H BATTERY	CHB		
C	02/26/17	REVISED GAS MTR	CHB		

NO.	DATE	DESCRIPTION	BY	CHK.	APP.
A	06/07/12	ISSUE FOR SITE PRINTING	CHB		
B	06/27/12	REVISED FOR REALLY SCARY FED 5H BATTERY	CHB		
C	02/26/17	REVISED GAS MTR	CHB		

NO.	DATE	DESCRIPTION	BY	CHK.	APP.
A	06/07/12	ISSUE FOR SITE PRINTING	CHB		
B	06/27/12	REVISED FOR REALLY SCARY FED 5H BATTERY	CHB		
C	02/26/17	REVISED GAS MTR	CHB		

NO.	DATE	DESCRIPTION	BY	CHK.	APP.
A	06/07/12	ISSUE FOR SITE PRINTING	CHB		
B	06/27/12	REVISED FOR REALLY SCARY FED 5H BATTERY	CHB		
C	02/26/17	REVISED GAS MTR	CHB		

NO.	DATE	DESCRIPTION	BY	CHK.	APP.
A	06/07/12	ISSUE FOR SITE PRINTING	CHB		
B	06/27/12	REVISED FOR REALLY SCARY FED 5H BATTERY	CHB		
C	02/26/17	REVISED GAS MTR	CHB		

NO.	DATE	DESCRIPTION	BY	CHK.	APP.
A	06/07/12	ISSUE FOR SITE PRINTING	CHB		
B	06/27/12	REVISED FOR REALLY SCARY FED 5H BATTERY	CHB		
C	02/26/17	REVISED GAS MTR	CHB		

NO.	DATE	DESCRIPTION	BY	CHK.	APP.
A	06/07/12	ISSUE FOR SITE PRINTING	CHB		
B	06/27/12	REVISED FOR REALLY SCARY FED 5H BATTERY	CHB		
C	02/26/17	REVISED GAS MTR	CHB		

NO.	DATE	DESCRIPTION	BY	CHK.	APP.
A	06/07/12	ISSUE FOR SITE PRINTING	CHB		
B	06/27/12	REVISED FOR REALLY SCARY FED 5H BATTERY	CHB		
C	02/26/17	REVISED GAS MTR	CHB		

NO.	DATE	DESCRIPTION	BY	CHK.	APP.
A	06/07/12	ISSUE FOR SITE PRINTING	CHB		
B	06/27/12	REVISED FOR REALLY SCARY FED 5H BATTERY	CHB		
C	02/26/17	REVISED GAS MTR	CHB		

NO.	DATE	DESCRIPTION	BY	CHK.	APP.
A	06/07/12	ISSUE FOR SITE PRINTING	CHB		
B	06/27/12	REVISED FOR REALLY SCARY FED 5H BATTERY	CHB		
C	02/26/17	REVISED GAS MTR	CHB		

NO.	DATE	DESCRIPTION	BY	CHK.	APP.
A	06/07/12	ISSUE FOR SITE PRINTING	CHB		
B	06/27/12	REVISED FOR REALLY SCARY FED 5H BATTERY	CHB		
C	02/26/17	REVISED GAS MTR	CHB		

NO.	DATE	DESCRIPTION	BY	CHK.	APP.
A	06/07/12	ISSUE FOR SITE PRINTING	CHB		
B	06/27/12	REVISED FOR REALLY SCARY FED 5H BATTERY	CHB		
C	02/26/17	REVISED GAS MTR	CHB		

NO.	DATE	DESCRIPTION	BY	CHK.	APP.
A	06/07/12	ISSUE FOR SITE PRINTING	CHB		
B	06/27/12	REVISED FOR REALLY SCARY FED 5H BATTERY	CHB		
C	02/26/17	REVISED GAS MTR	CHB		

NO.	DATE	DESCRIPTION	BY	CHK.	APP.
A	06/07/12	ISSUE FOR SITE PRINTING	CHB		
B	06/27/12	REVISED FOR REALLY SCARY FED 5H BATTERY	CHB		
C	02/26/17	REVISED GAS MTR	CHB		

NO.	DATE	DESCRIPTION	BY	CHK.	APP.
A	06/07/12	ISSUE FOR SITE PRINTING	CHB		
B	06/27/12	REVISED FOR REALLY SCARY FED 5H BATTERY	CHB		
C	02/26/17	REVISED GAS MTR	CHB		

NO.	DATE	DESCRIPTION	BY	CHK.	APP.
A	06/07/12	ISSUE FOR SITE PRINTING	CHB		
B	06/27/12	REVISED FOR REALLY SCARY FED 5H BATTERY	CHB		
C	02/26/17	REVISED GAS MTR	CHB		

NO.	DATE	DESCRIPTION	BY	CHK.	APP.
A	06/07/12	ISSUE FOR SITE PRINTING	CHB		
B	06/27/12	REVISED FOR REALLY SCARY FED 5H BATTERY	CHB		
C	02/26/17	REVISED GAS MTR	CHB		

NO.	DATE	DESCRIPTION	BY	CHK.	APP.
A	06/07/12	ISSUE FOR SITE PRINTING	CHB		
B	06/27/12	REVISED FOR REALLY SCARY FED 5H BATTERY	CHB		
C	02/26/17	REVISED GAS MTR	CHB		

NO.	DATE	DESCRIPTION	BY	CHK.	APP.
A	06/07/12	ISSUE FOR SITE PRINTING	CHB		
B	06/27/12	REVISED FOR REALLY SCARY FED 5H BATTERY	CHB		
C	02/26/17	REVISED GAS MTR	CHB		

NO.	DATE	DESCRIPTION	BY	CHK.	APP.
A	06/07/12	ISSUE FOR SITE PRINTING	CHB		
B	06/27/12	REVISED FOR REALLY SCARY FED 5H BATTERY	CHB		
C	02/26/17	REVISED GAS MTR	CHB		

NO.	DATE	DESCRIPTION	BY	CHK.	APP.
A	06/07/12	ISSUE FOR SITE PRINTING	CHB		
B	06/27/12	REVISED FOR REALLY SCARY FED 5H BATTERY	CHB		
C	02/26/17	REVISED GAS MTR	CHB		

NO.	DATE	DESCRIPTION	BY	CHK.	APP.
A	06/07/12	ISSUE FOR SITE PRINTING	CHB		
B	06/27/12	REVISED FOR REALLY SCARY FED 5H BATTERY	CHB		
C	02/26/17	REVISED GAS MTR	CHB		

NO.	DATE	DESCRIPTION	BY	CHK.	APP.
A	06/07/12	ISSUE FOR SITE PRINTING	CHB		
B	06/27/12	REVISED FOR REALLY SCARY FED 5H BATTERY	CHB		
C	02/26/17	REVISED GAS MTR	CHB		

NO.	DATE	DESCRIPTION	BY	CHK.	APP.
A	06/07/12	ISSUE FOR SITE PRINTING	CHB		
B	06/27/12	REVISED FOR REALLY SCARY FED 5H BATTERY	CHB		
C	02/26/17	REVISED GAS MTR	CHB		

NO.	DATE	DESCRIPTION	BY	CHK.	APP.
A	06/07/12	ISSUE FOR SITE PRINTING	CHB		
B	06/27/12	REVISED FOR REALLY SCARY FED 5H BATTERY	CHB		
C	02/26/17	REVISED GAS MTR	CHB		

NO.	DATE	DESCRIPTION	BY	CHK.	APP.
A	06/07/12	ISSUE FOR SITE PRINTING	CHB		
B	06/27/12	REVISED FOR REALLY SCARY FED 5H BATTERY	CHB		
C	02/26/17	REVISED GAS MTR	CHB		

NO.	DATE	DESCRIPTION	BY	CHK.	APP.
A	06/07/12	ISSUE FOR SITE PRINTING	CHB		
B	06/27/12	REVISED FOR REALLY SCARY FED 5H BATTERY	CHB		
C	02/26/17	REVISED GAS MTR	CHB		

NO.	DATE	DESCRIPTION	BY	CHK.	APP.
A	06/07/12	ISSUE FOR SITE PRINTING	CHB		
B	06/27/12	REVISED FOR REALLY SCARY FED 5H BATTERY	CHB		
C	02/26/17	REVISED GAS MTR	CHB		

NO.	DATE	DESCRIPTION	BY	CHK.	APP.
A	06/07/12	ISSUE FOR SITE PRINTING	CHB		
B	06/27/12	REVISED FOR REALLY SCARY FED 5H BATTERY	CHB		
C	02/26/17	REVISED GAS MTR	CHB		

NO.	DATE	DESCRIPTION	BY	CHK.	APP.
A	06/07/12	ISSUE FOR SITE PRINTING	CHB		
B	06/27/12	REVISED FOR REALLY SCARY FED 5H BATTERY	CHB		
C	02/26/17	REVISED GAS MTR	CHB		

NO.	DATE	DESCRIPTION	BY	CHK.	APP.
A	06/07/12	ISSUE FOR SITE PRINTING	CHB		
B	06/27/12	REVISED FOR REALLY SCARY FED 5H BATTERY	CHB		
C	02/26/17	REVISED GAS MTR	CHB		

NO.	DATE	DESCRIPTION	BY	CHK.	APP.
A	06/07/12	ISSUE FOR SITE PRINTING	CHB		
B	06/27/12	REVISED FOR REALLY SCARY FED 5H BATTERY	CHB		
C	02/26/17	REVISED GAS MTR	CHB		

NO.	DATE	DESCRIPTION	BY	CHK.	APP.
A	06/07/12	ISSUE FOR SITE PRINTING	CHB		
B	06/27/12	REVISED FOR REALLY SCARY FED 5H BATTERY	CHB		
C	02/26/17	REVISED GAS MTR	CHB		

NO.	DATE	DESCRIPTION	BY	CHK.	APP.
A	06/07/12	ISSUE FOR SITE PRINTING	CHB		
B	06/27/12	REVISED FOR REALLY SCARY FED 5H BATTERY	CHB		
C	02/26/17	REVISED GAS MTR	CHB		

NO.	DATE	DESCRIPTION	BY	CHK.	APP.
A	06/07/12	ISSUE FOR SITE PRINTING	CHB		
B	06/27/12	REVISED FOR REALLY SCARY FED 5H BATTERY	CHB		
C	02/26/17	REVISED GAS MTR	CHB		

NO.	DATE	DESCRIPTION	BY	CHK.	APP.
A	06/07/12	ISSUE FOR SITE PRINTING	CHB		
B	06/27/12	REVISED FOR REALLY SCARY FED 5H BATTERY	CHB		
C	02/26/17	REVISED GAS MTR	CHB		

NO.	DATE	DESCRIPTION	BY	CHK.	APP.
A	06/07/12	ISSUE FOR SITE PRINTING	CHB		
B	06/27/12	REVISED FOR REALLY SCARY FED 5H BATTERY	CHB		
C	02/26/17	REVISED GAS MTR	CHB		

NO.	DATE	DESCRIPTION	BY	CHK.	APP.
A	06/07/12	ISSUE FOR SITE PRINTING	CHB		
B	06/27/12	REVISED FOR REALLY SCARY FED 5H BATTERY	CHB		
C	02/26/17	REVISED GAS MTR	CHB		

NO.	DATE	DESCRIPTION	BY	CHK.	APP.
A	06/07/12	ISSUE FOR SITE PRINTING	CHB		
B	06/27/12	REVISED FOR REALLY SCARY FED 5H BATTERY	CHB		
C	02/26/17	REVISED GAS MTR	CHB		

ENGINEERING RECORD					
NO.	DATE	DESCRIPTION	BY	CHK.	APP.
A	06/07/12	ISSUE FOR SITE PRINTING	CHB		
B	06/07/12	ISSUE FOR SITE PRINTING	CHB		
C					
D					
E					
F					
G					
H					
I					
J					
K					
L					
M					
N					
O					
P					
Q					
R					
S					
T					
U					
V					
W					
X					
Y					
Z					
AA					
AB					
AC					
AD					
AE					
AF					
AG					
AH					
AI					
AJ					
AK					
AL					
AM					
AN					
AO					
AP					
AQ					
AR					
AS					
AT					
AU					
AV					
AW					
AX					
AY					
AZ					
BA					
BB					
BC					
BD					
BE					
BF					
BG					
BH					
BI					
BJ					
BK					
BL					
BM					
BN					
BO					
BP					
BQ					
BR					
BS					
BT					
BU					
BV					
BW					
BX					
BY					
BZ					
CA					
CB					
CC					
CD					
CE					
CF					
CG					
CH					
CI					
CJ					
CK					
CL					
CM					
CN					
CO					
CP					
CQ					
CR					
CS					
CT					
CU					
CV					
CW					
CX					
CY					
CZ					
DA					
DB					
DC					
DD					
DE					
DF					
DG					
DH					
DI					
DJ					
DK					
DL					
DM					
DN					
DO					
DP					
DQ					
DR					
DS					
DT					
DU					
DV					
DW					
DX					
DY					
DZ					
EA					
EB					
EC					
ED					
EE					
EF					
EG					
EH					
EI					
EJ					
EK					
EL					
EM					
EN					
EO					
EP					
EQ					
ER					
ES					
ET					
EU					
EV					
EW					
EX					
EY					
EZ					
FA					
FB					
FC					
FD					
FE					
FF					
FG					
FH					
FI					
FJ					
FK					
FL					
FM					
FN					
FO					
FP					
FQ					
FR					
FS					
FT					
FU					
FV					
FW					
FX					
FY					
FZ					
GA					
GB					
GC					
GD					
GE					
GF					
GG					
GH					
GI					
GJ					
GK					
GL					
GM					
GN					
GO					
GP					
GQ					
GR					
GS					
GT					
GU					
GV					
GW					
GX					
GY					
GZ					
HA					
HB					
HC					
HD					
HE					
HF					
HG					
HH					
HI					
HJ					
HK					
HL					
HM					
HN					
HO					
HP					
HQ					
HR					
HS					
HT					
HU					
HV					
HW					
HX					
HY					
HZ					
IA					
IB					
IC					
ID					
IE					
IF					
IG					
IH					
II					
IJ					
IK					
IL					
IM					
IN					
IO					
IP					
IQ					
IR					
IS					
IT					
IU					
IV					
IW					
IX					
IY					
IZ					
JA					
JB					
JC					
JD					
JE					
JF					
JG					
JH					
JI					
JJ					
JK					
JL					
JM					
JN					
JO					
JP					
JK					
JR					
JS					
JT					
JU					
JV					
JW					
JX					
JY					
JZ					
KA					
KB					
KC					
KD					
KE					
KF					
KG					
KH					
KI					
KJ					
KK					
KL					
KM					
KN					
KO					
KP					
KQ					
KR					
KS					
KT					
KU					
KV					
KW					
KX					
KY					
KZ					
LA					
LB					
LC					