

District I  
1625 N. French Dr., Hobbs, NM 88240  
Phone: (575) 393-6161 Fax: (575) 393-0720  
District II  
811 S. First St., Artesia, NM 88210  
Phone: (575) 748-1283 Fax: (575) 748-9720  
District III  
1000 Rio Brazos Road, Aztec, NM 87410  
Phone: (505) 334-6178 Fax: (505) 334-6170  
District IV  
1220 S. St. Francis Dr., Santa Fe, NM 87505  
Phone: (505) 476-3460 Fax: (505) 476-3462

State of New Mexico  
Energy, Minerals & Natural Resources Department  
OIL CONSERVATION DIVISION  
1220 South St. Francis Dr.  
Santa Fe, NM 87505

NM OIL CONSERVATION  
ARTESIA DISTRICT

Form C-102

AUG 29 2017

Revised August 1, 2011  
Submit one copy to appropriate

District Office

RECEIVED

☐ AMENDED REPORT

WELL LOCATION AND ACREAGE DEDICATION PLAT

|  |  |  |
|--|--|--|
| <sup>1</sup> API Number<br>30-CK-42750 | <sup>2</sup> Pool Code<br>96330                | <sup>3</sup> Pool Name<br>LOS Madanos (Wolfcamp) South |
| <sup>4</sup> Property Code             | <sup>5</sup> Property Name<br>JAMES RANCH UNIT | <sup>6</sup> Well Number<br>146H                       |
| <sup>7</sup> OGRID No.<br>1260737      | <sup>8</sup> Operator Name<br>BOPCO, L.P.      | <sup>9</sup> Elevation<br>3312'                        |

<sup>10</sup> Surface Location

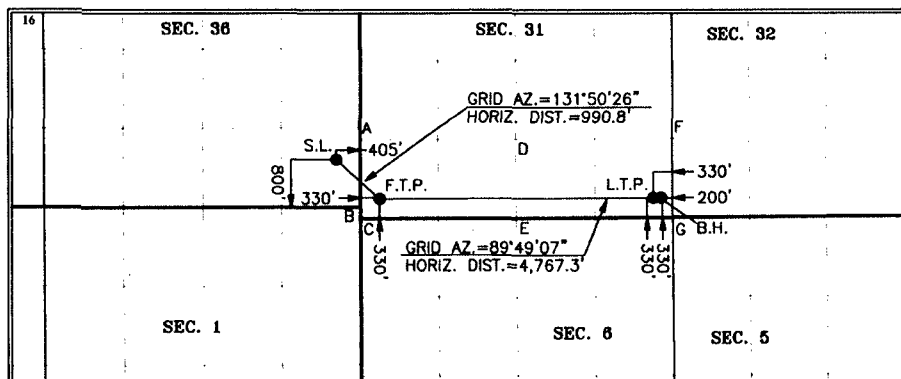
| UL or lot no. | Section | Township | Range | Lot Idn | Feet from the | North/South line | Feet from the | East/West line | County |
|---------------|---------|----------|-------|---------|---------------|------------------|---------------|----------------|--------|
| P             | 36      | 22 S     | 30 E  |         | 800           | SOUTH            | 405           | EAST           | EDDY   |

<sup>11</sup> Bottom Hole Location If Different From Surface

| UL or lot no. | Section | Township | Range | Lot Idn | Feet from the | North/South line | Feet from the | East/West line | County |
|---------------|---------|----------|-------|---------|---------------|------------------|---------------|----------------|--------|
| P             | 31      | 22 S     | 31 E  |         | 330           | SOUTH            | 200           | EAST           | EDDY   |

|  |                               |                                  |                         |
|--|-------------------------------|----------------------------------|-------------------------|
| <sup>12</sup> Dedicated Acres<br>1.005 | <sup>13</sup> Joint or Infill | <sup>14</sup> Consolidation Code | <sup>15</sup> Order No. |
|--|-------------------------------|----------------------------------|-------------------------|

No allowable will be assigned to this completion until all interests have been consolidated or a non-standard unit has been approved by the division.



| SURFACE LOCATION    | LAST TAKE POINT     | SURFACE LOCATION    | LAST TAKE POINT     |
|---------------------|---------------------|---------------------|---------------------|
| NAD 27 NME          | NAD 27 NME          | NAD 83 NME          | NAD 83 NME          |
| Y= 489,009.5        | Y= 488,363.1        | Y= 489,069.4        | Y= 488,423.0        |
| X= 656,549.0        | X= 661,924.4        | X= 697,731.3        | X= 703,106.7        |
| LAT.= 32.343384°N   | LAT.= 32.341536°N   | LAT.= 32.343507°N   | LAT.= 32.341659°N   |
| LONG.= 103.826433°W | LONG.= 103.809038°W | LONG.= 103.826923°W | LONG.= 103.809529°W |

| FIRST TAKE POINT    | BOTTOM HOLE LOCATION | FIRST TAKE POINT    | BOTTOM HOLE LOCATION |
|---------------------|----------------------|---------------------|----------------------|
| NAD 27 NME          | NAD 27 NME           | NAD 83 NME          | NAD 83 NME           |
| Y= 488,348.6        | Y= 488,363.7         | Y= 488,408.5        | Y= 488,423.6         |
| X= 657,287.2        | X= 662,054.4         | X= 698,469.5        | X= 703,236.7         |
| LAT.= 32.341558°N   | LAT.= 32.341536°N    | LAT.= 32.341680°N   | LAT.= 32.341659°N    |
| LONG.= 103.824053°W | LONG.= 103.808617°W  | LONG.= 103.824543°W | LONG.= 103.809108°W  |

CORNER COORDINATES TABLE  
NAD 27 NME

|                                    |
|------------------------------------|
| A - Y= 489,336.0 N, X= 656,952.5 E |
| B - Y= 488,210.5 N, X= 656,957.8 E |
| C - Y= 488,018.0 N, X= 656,958.7 E |
| D - Y= 489,344.0 N, X= 659,608.1 E |
| E - Y= 488,022.8 N, X= 659,616.6 E |
| F - Y= 489,355.4 N, X= 662,249.2 E |
| G - Y= 488,034.6 N, X= 662,256.0 E |

CORNER COORDINATES TABLE  
NAD 83 NME

|                                    |
|------------------------------------|
| A - Y= 489,395.9 N, X= 698,134.8 E |
| B - Y= 488,270.4 N, X= 698,140.1 E |
| C - Y= 488,077.9 N, X= 698,141.0 E |
| D - Y= 489,403.9 N, X= 700,790.4 E |
| E - Y= 488,082.7 N, X= 700,798.9 E |
| F - Y= 489,415.3 N, X= 703,431.5 E |
| G - Y= 488,094.5 N, X= 703,438.4 E |

<sup>17</sup> OPERATOR CERTIFICATION

I hereby certify that the information contained herein is true and complete to the best of my knowledge and belief, and that this organization either owns a working interest or unleased mineral interest in the land including the proposed bottom hole location or has a right to drill this well at this location pursuant to a contract with an owner of such a mineral or working interest, or to a voluntary pooling agreement or a compulsory pooling order heretofore entered by the division.

Signature: Stephanie Rubalcava Date: 8-7-17

Printed Name: Stephanie Rubalcava

E-mail Address: srubalcava@xtenergy.com

<sup>18</sup> SURVEYOR CERTIFICATION

I hereby certify that the well location shown on this plat was plotted from field notes of actual surveys made by me or under my supervision, and that the same is true and correct to the best of my belief.

6-26-2017

Date of Survey

Signature and Seal of Professional Surveyor:

Signature of Mark Dillon Harp



MARK DILLON HARP 23786  
Certificate Number

AI

2017050724