

District I  
1625 N. French Dr., Hobbs, NM 88240  
Phone: (575) 393-6161 Fax: (575) 393-0720  
District II  
811 S. First St., Artesia, NM 88210  
Phone: (575) 748-1283 Fax: (575) 748-9720  
District III  
1000 Rio Brazos Road, Aztec, NM 87410  
Phone: (505) 334-6178 Fax: (505) 334-6170  
District IV  
1220 S. St. Francis Dr., Santa Fe, NM 87505  
Phone: (505) 476-3460 Fax: (505) 476-3462

State of New Mexico **NM OIL CONSERVATION** Form C-102  
Energy, Minerals & Natural Resources Department **ARTESIA DISTRICT** Revised August 1, 2011  
**OIL CONSERVATION DIVISION** Submit one copy to appropriate District Office  
1220 South St. Francis Dr.  
Santa Fe, NM 87505

OCT 03 2017

RECEIVED ☐ AMENDED REPORT

WELL LOCATION AND ACREAGE DEDICATION PLAT

<sup>1</sup> API Number <b>30-015-44461</b>	<sup>2</sup> Pool Code <b>98220</b>	<sup>3</sup> Pool Name <b>PURPLE SAGE WOLFCAMP GAS</b>
<sup>4</sup> Property Code <b>319702</b>	<sup>5</sup> Property Name <b>GHOSTRIDER 25/36 WOAP FEDERAL COM</b>	
<sup>7</sup> OGRID NO. <b>14744</b>	<sup>8</sup> Operator Name <b>MEWBOURNE OIL COMPANY</b>	<sup>6</sup> Well Number <b>2H</b>
		<sup>9</sup> Elevation <b>3221'</b>

<sup>10</sup> Surface Location

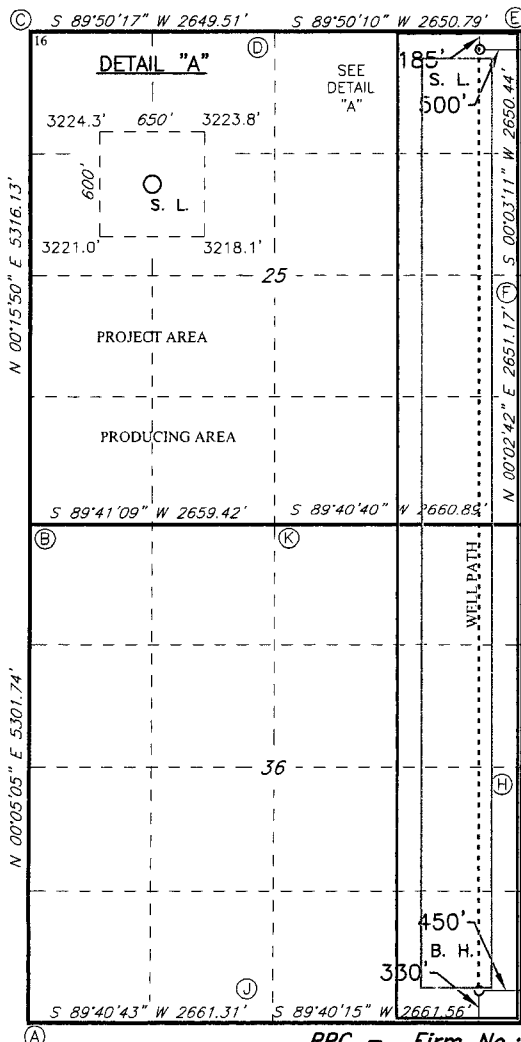
UL or lot no.	Section	Township	Range	Lot Idn	Feet from the	North/South line	Feet From the	East/West line	County
<b>A</b>	<b>25</b>	<b>23S</b>	<b>26E</b>		<b>185</b>	<b>NORTH</b>	<b>500</b>	<b>EAST</b>	<b>EDDY</b>

<sup>11</sup> Bottom Hole Location If Different From Surface

UL or lot no.	Section	Township	Range	Lot Idn	Feet from the	North/South line	Feet from the	East/West line	County
<b>P</b>	<b>36</b>	<b>23S</b>	<b>26E</b>		<b>330</b>	<b>SOUTH</b>	<b>450</b>	<b>EAST</b>	<b>EDDY</b>

<sup>12</sup> Dedicated Acres <b>320</b>	<sup>13</sup> Joint or Infill	<sup>14</sup> Consolidation Code	<sup>15</sup> Order No.
---	-------------------------------	----------------------------------	-------------------------

No allowable will be assigned to this completion until all interest have been consolidated or a non-standard unit has been approved by the division.



**GEODETIC DATA**  
NAD 27 GRID - NM EAST NAD 83 GRID - NM EAST  
**SURFACE LOCATION**  
N: 466396.0 - E: 529160.3 N: 466454.5 - E: 570342.4  
LAT: 32.28220413° N LAT: 32.28232265° N  
LONG: 104.23897611° W LONG: 104.23947680° W  
**BOTTOM HOLE**  
N: 456309.6 - E: 529196.6 N: 456367.8 - E: 570378.9  
LAT: 32.25447673° N LAT: 32.25459538° N  
LONG: 104.23888729° W LONG: 104.23938720° W

**CORNER DATA**  
NAD 27 GRID - NM EAST

A: FOUND BRASS CAP "1943"  
N: 455952.1 - E: 524329.1  
B: FOUND 1/2" REBAR  
N: 461252.5 - E: 524337.0  
C: FOUND BRASS CAP "1943"  
N: 466567.3 - E: 524361.5  
D: FOUND BRASS CAP "1943"  
N: 466574.8 - E: 527010.3  
E: FOUND BRASS CAP "1943"  
N: 466582.4 - E: 529660.5  
F: FOUND BRASS CAP "1943"  
N: 463932.6 - E: 529658.0  
G: FOUND BRASS CAP "1943"  
N: 461282.1 - E: 529655.9  
H: FOUND BRASS CAP "1943"  
N: 458632.0 - E: 529653.4  
I: FOUND BRASS CAP "1943"  
N: 455982.3 - E: 529650.7  
J: FOUND BRASS CAP "1943"  
N: 455967.0 - E: 526989.8  
K: FOUND BRASS CAP "1943"  
N: 461267.1 - E: 526995.7

**17 OPERATOR CERTIFICATION**

I hereby certify that the information contained herein is true and complete to the best of my knowledge and belief, and that this organization either owns a working interest or unleased mineral interest in the land including the proposed bottom hole location or has a right to drill this well at this location pursuant to a contract with an owner of such a mineral or working interest, or to a voluntary pooling agreement or a compulsory pooling order heretofore entered by the division.

03-02-2017

Signature  
**BRADLEY BISHOP**  
Printed Name  
**BBISHOP@MEWBOURNE.COM**  
E-mail Address

**18 SURVEYOR CERTIFICATION**

I hereby certify that the well location shown on this plat was plotted from field notes of actual surveys made by me or under my supervision, and that the same is true and correct to the best of my belief.

2-9-2017

Date of Survey  
Signature and Seal of Professional Surveyor

19680

Certificate Number

